

# AmplideX<sup>®</sup>

## PCR/CE *FMR1* Kit



### Market-leading, easy-to-use, high performance assay system for laboratories to reliably analyze CGG repeats in the *FMR1* gene

The unique Triplet Repeat Primed PCR (TP-PCR) design allows for sensitive detection of all alleles and simultaneous resolution of zygosity. This assay is optimized for use on widely established laboratory equipment and delivers *FMR1* results in under six hours.

#### REDUCED COMPLEXITY

- Easily detect and quantify CGG repeats
- Automated result calling with included AmplideX<sup>®</sup> PCR/CE *FMR1* Analysis Module
- End-to-end solution including all reagents, controls, software, and service from a single vendor

#### OPTIMIZED WORKFLOW

- PCR and CE workflow eliminates need for Southern blot analysis
- Results in under a day
- Similar workflow to other AmplideX assays streamlines implementation

#### QUALITY RESULTS

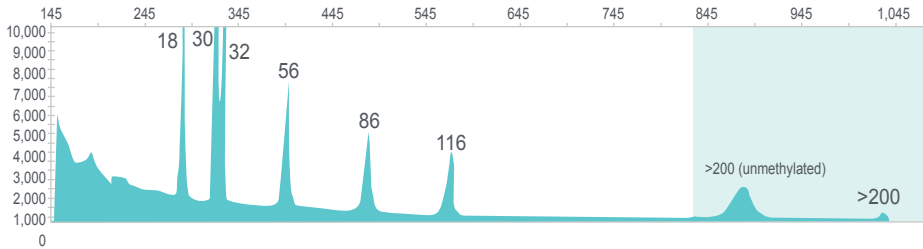
- Detection of all allele expansions, including low abundance full mutation size mosaics with up to at least 1300 CGG repeats
- Resolution of female homozygous and heterozygous samples
- Proven performance, with Asuragen *FMR1* products supported by more than 100 peer-reviewed publications, which together have been cited more than 2000 times

#### AmplideX PCR/CE *FMR1* Kit<sup>†</sup> Workflow – <6 hrs from DNA to data



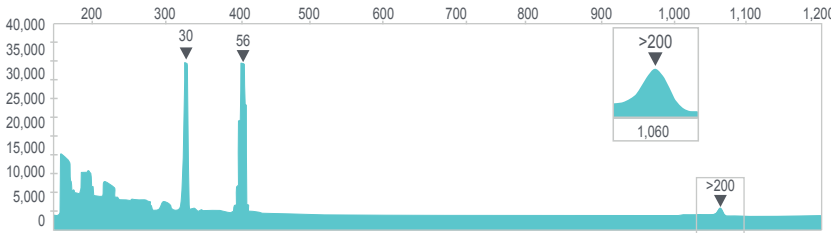
## SIZING ACCURACY AND SENSITIVITY

### Sizing Accuracy Demonstrated with the AmplideX PCR/CE *FMR1* Control\* (Process Control)



The assay accurately sizes across the full spectrum with the *FMR1* control. The control includes peaks just 2 repeats apart (30,32) for precise sizing.

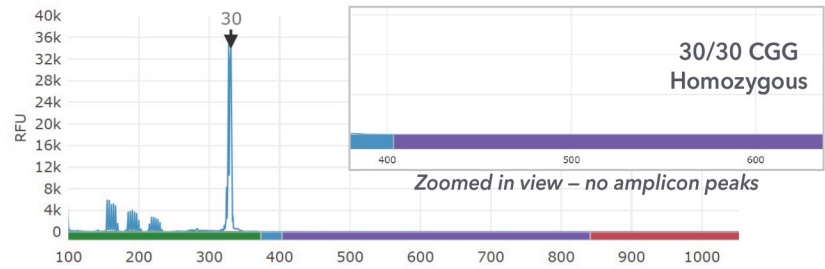
### Sensitive Detection Demonstrated with the AmplideX mPCR *FMR1* Control\* (Sensitivity Control)



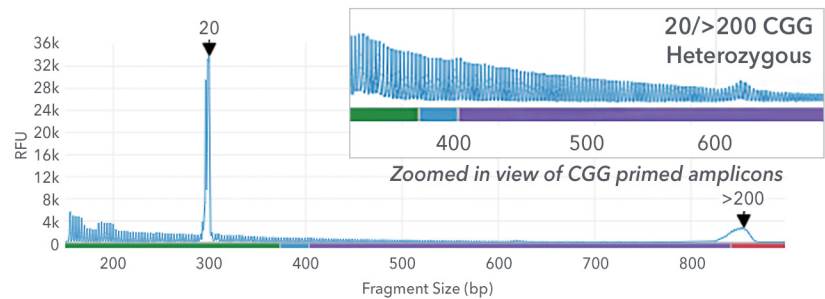
Detection of low abundance full mutations is demonstrated by amplification of the sensitivity control, which contains 5% Full Mutation in a background of 95% Normal.

## CLEARLY RESOLVES FEMALE ZYGOSITY

Absence of CGG primed amplicons beyond the detected peak shows lack of a longer, heterozygous peak.



CGG primed amplicons beyond 20 CGG peak shows detection of longer, heterozygous peak, consistent with >200 CGG peak.



## ORDERING INFORMATION

Part Number	Product Description	Number of Reactions
76008	AmplideX PCR/CE <i>FMR1</i> Kit†	100
49513	AmplideX PCR/CE <i>FMR1</i> Control*	24 ul
49514	AmplideX mPCR <i>FMR1</i> Control*	24 ul

For more information, please contact [asuragen.com](http://asuragen.com)

†CE-IVD. For U.S. export only.

\*For Research Use Only. Not for use in diagnostic procedures.



Asuragen, Inc.  
2150 Woodward Street, Suite 100  
Austin TX 78744  
[www.asuragen.com](http://www.asuragen.com)

2000-0218  
1/22