



the **BEST FRUIT** grows from **STRONG** **ROOTS**

**How strong is your
melanoma panel?**

Melanoma is the most dangerous form of skin cancer, making early and accurate detection a matter of life and death. Cell Marque™ offers a complete *in vitro* diagnostic melanoma IHC portfolio, starting with foundational markers including S-100, HMB-45, and MART-1 (Melan A), and branching out into novel antibodies such as PNL2, KBA.62, MiTF, and rabbit monoclonal SOX-10.

 **CELL MARQUE™**
a **SIGMA-ALDRICH** company

Toll-Free: 800.665.7284

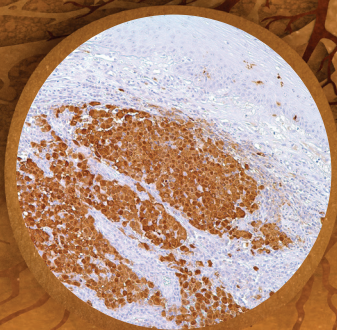
Direct: 916.746.8900

Email: service@cellmarque.com

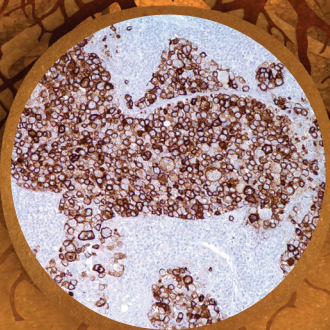


View our complete skin cancer portfolio

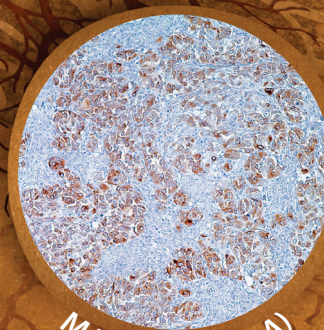
at www.cellmarque.com/dermatopathology



S-100



HMB-45



MART-1 (Melan A)

©2016 Sigma-Aldrich Co. LLC. All rights reserved. SIGMA-ALDRICH and Cell Marque are trademarks of Sigma-Aldrich Co. LLC. Sigma-Aldrich Co. LLC is a subsidiary of Merck KGaA, Darmstadt, Germany

Distributed by Abacus dx

1800 ABACUS (AUS) 0800 222 170 (NZ) | info@abacusdx.com | www.abacusdx.com

abacus dx