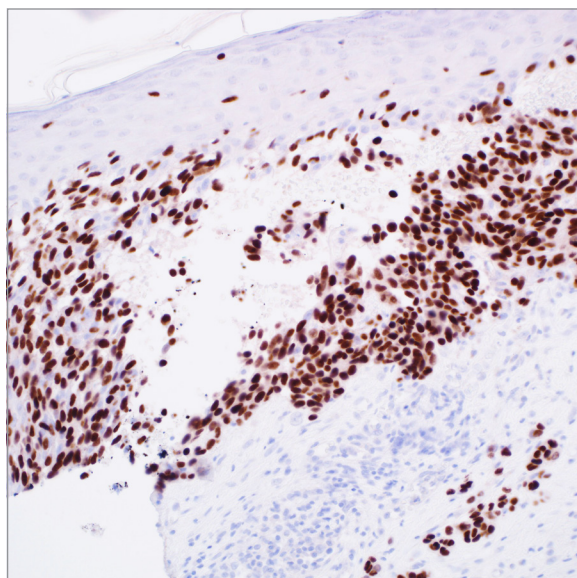
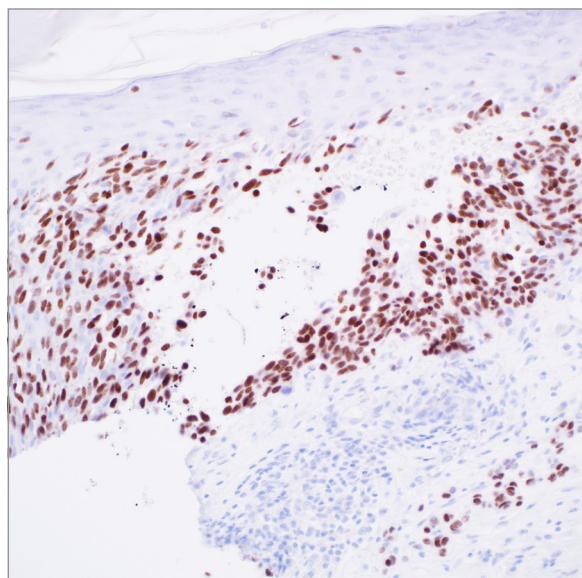
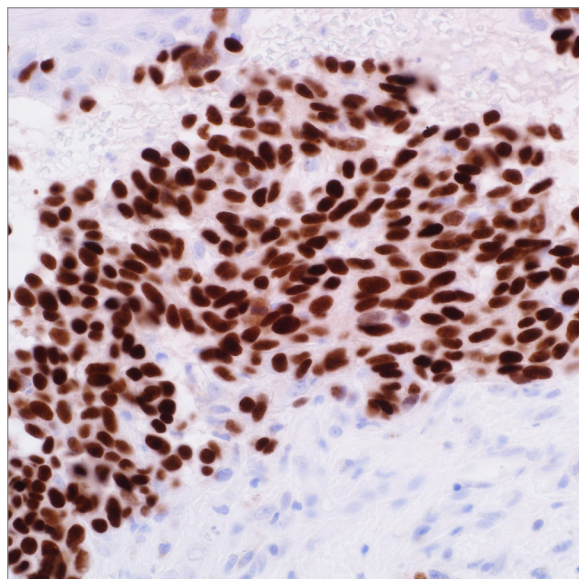
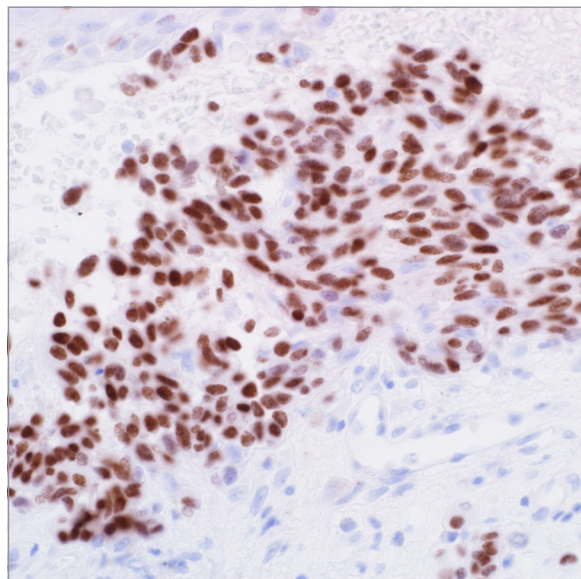


Clone Wars: SOX-10

mouse monoclonal vs. rabbit monoclonal, clone: EP268

Top-left: mouse monoclonal SOX-10 on desmoplastic melanoma 400X

Top-right: rabbit monoclonal SOX-10 (EP268) on desmoplastic melanoma 400X



Bottom-left: mouse monoclonal SOX-10 on desmoplastic melanoma 200X

Bottom-right: rabbit monoclonal SOX-10 (EP268) on desmoplastic melanoma 200X

SOX-10 (EP268)

Volume	Part No.
0.1 ml, concentrate	383R-14
0.5 ml, concentrate	383R-15
1 ml, concentrate	383R-16
1 ml, prediluted	383R-17
7 ml, prediluted	383R-18
Positive control slides	383S

Benefits of Rabbit Monoclonal SOX-10:

- *In vitro* diagnostic
- Nuclear visualization to eliminate cytoplasmic melanin interference
- Sensitivity of a rabbit antibody with the specificity and cleanliness of a monoclonal antibody for a strong signal to noise ratio
- More intense staining than mouse counterparts
- Labels desmoplastic melanoma with a higher sensitivity and specificity than anti-S-100
- Rabbit antibody is compatible with standard automation and detection used in diagnostic IHC

©2015 Sigma-Aldrich Co. LLC. All rights reserved. SIGMA-ALDRICH is a trademark of Sigma-Aldrich Co. LLC, registered in the US and other countries. Cell Marque is a trademark of Sigma-Aldrich Co. LLC or its affiliates.

Rev. 0.0

CELL MARQUE

RabMAb[®]
Technology from Abcam

Cell Marque™ – a Sigma-Aldrich® Company

Distributed by Abacus dx

1800 ABACUS (AUS) 0800 222 170 (NZ) | info@abacusdx.com | www.abacusdx.com

abacus dx