



Novel Gastrointestinal (GI) Markers

available from



SATB2 (EP281)

SATB2 is a nuclear marker that is valuable in diagnosing tumors of the lower GI tract. It is useful in a diagnostic panel that includes cytokeratin 7, cytokeratin 20, and CDX-2. When used with cytokeratin 7 and cytokeratin 20, the specificity for colorectal carcinoma increases to 100% with the sensitivity over 90%. SATB2 has also shown to identify medullary carcinomas of the colon that are often cytokeratin 20 and CDX-2 negative.

Description	Cat. No.
0.1 ml concentrate	384R-14
0.5 ml concentrate	384R-15
1 ml concentrate	384R-16
1 ml predilute	384R-17
7 ml predilute	384R-18
5 Positive Control Slides	384S

Cadherin-17 (SP183)

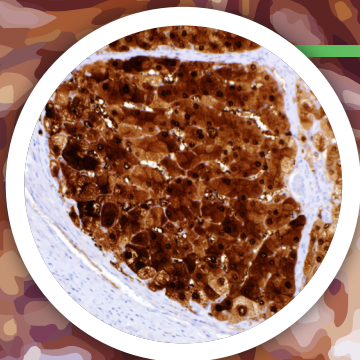
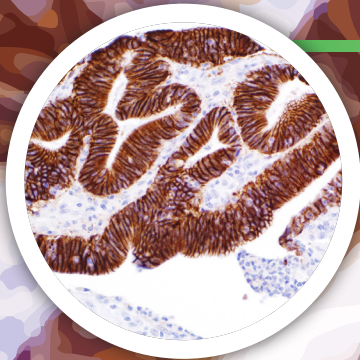
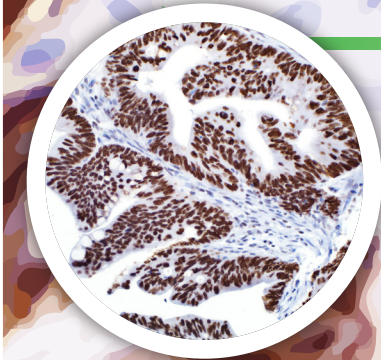
Cadherin-17 is expressed in many adenocarcinomas which includes colorectal, pancreatic, and gastric. Cadherin-17 is more commonly used in colorectal adenocarcinomas due to its diffuse and strong staining. In other adenocarcinomas, such as stomach, pancreas, and bile duct, cadherin-17 can be visualized as focal or scattered. Cadherin-17 can be complimentary to E-cadherin as they are both expressed in the intestinal mucosa.

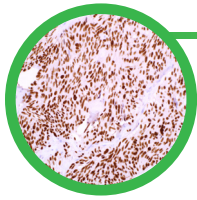
Description	Cat. No.
0.1 ml concentrate	378R-14
0.5 ml concentrate	378R-15
1 ml concentrate	378R-16
1 ml predilute	378R-17
7 ml predilute	378R-18
5 Positive Control Slides	378S

Arginase-1 (SP156)

Arginase-1 can be used in a panel of antibodies including Hep Par-1 and glypican-3 to aid in the distinction of benign versus malignant liver tumors in small biopsies. Hepatocellular carcinoma (HCC) is the most common primary malignant tumor of the liver accounting for an estimated 70-80% of total liver cancers worldwide; therefore, arginase-1 can prove to be a reliable marker for the differentiation of liver neoplasms, most importantly HCC.

Description	Cat. No.
0.1 ml concentrate	380R-14
0.5 ml concentrate	380R-15
1 ml concentrate	380R-16
1 ml predilute	380R-17
7 ml predilute	380R-18
5 Positive Control Slides	380S

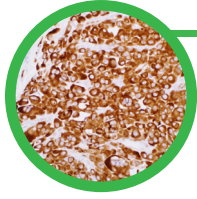




Islet-1 (EP283)

Islet-1 is a neuroendocrine marker that labels islets in the pancreas. According to literature, Islet-1 is helpful in distinguishing between well-differentiated and poorly-differentiated pancreatic neuroendocrine neoplasms. It has also demonstrated positivity in the majority of malignant extrapancreatic neuroendocrine neoplasms.¹

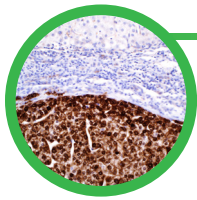
Description	Cat. No.
0.1 ml concentrate	431R-14
0.5 ml concentrate	431R-15
1 ml concentrate	431R-16
1 ml predilute	431R-17
7 ml predilute	431R-18
5 Positive Control Slides	431S



IMP3 (EP286)

IMP3 is a useful marker in identifying malignancies in pancreatic ductal adenocarcinoma to distinguish them from benign pancreatic lesions, such as chronic pancreatitis. IMP3 is also known to be strongly expressed Reed-Sternberg (RS) cells and mononuclear RS for classic Hodgkin's lymphoma (cHL). The advantage of this marker for cHL is that it does not stain immunoblasts or background neutrophils, eosinophils and macrophages and is more sensitive than the more traditional markers CD30 and CD15. It is also positive in the popcorn cells of nodular lymphocyte predominant Hodgkin's lymphoma that are usually negative for CD30 and CD15.

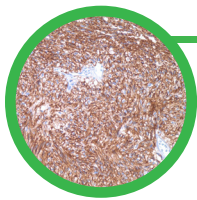
Description	Cat. No.
0.1 ml concentrate	433R-14
0.5 ml concentrate	433R-15
1 ml concentrate	433R-16
1 ml predilute	433R-17
7 ml predilute	433R-18
5 Positive Control Slides	433S



Glutamine Synthetase (GS-6)

Glutamine synthetase is a key marker in the identification of liver neoplasms, especially hepatocellular carcinoma (HCC). In HCC, glutamine synthetase expresses strongly and diffusely in malignant hepatocytes. It can be used in a panel with glypican-3 and HSP70 to help distinguish between dysplastic and early malignant hepatocellular nodules appearing in cirrhosis.

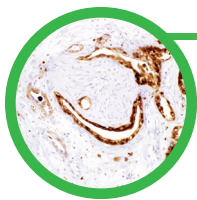
Description	Cat. No.
0.1 ml concentrate	389M-14
0.5 ml concentrate	389M-15
1 ml concentrate	389M-16
1 ml predilute	389M-17
7 ml predilute	389M-18
5 Positive Control Slides	389S



DOG1 (SP31)

Anti-DOG1 antibody has been shown to be highly specific and sensitive in the diagnosis of gastrointestinal stromal tumors (GIST). Approximately 4-15% of GIST stain weakly or are negative for c-kit by immunohistochemistry (IHC). In the vast majority of these cases, DOG1 is expressed by IHC.²⁻⁵

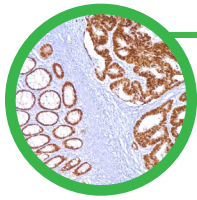
Description	Cat. No.
0.1 ml concentrate	244R-14
0.5 ml concentrate	244R-15
1 ml concentrate	244R-16
1 ml predilute	244R-17
7 ml predilute	244R-18
5 Positive Control Slides	244S



S100P (16/f5)

S100P is a nuclear pancreatic and urothelial marker. It is used to differentiate malignant from benign pancreas in fine needle aspiration (FNA) samples. It also has a higher sensitivity for transitional cell carcinomas than Uroplakin III.

Description	Cat. No.
0.1 ml concentrate	376M-94
0.5 ml concentrate	376M-95
1 ml concentrate	376M-96
1 ml predilute	376M-97
7 ml predilute	376M-98
5 Positive Control Slides	376S



CDX-2 (EPR2764Y)

CDX-2 is a nuclear colon carcinoma marker. It is useful in establishing GI origin of metastatic adenocarcinoma from carcinoids. It is most helpful in distinguishing metastatic colorectal carcinoma from lung adenocarcinoma.

Description	Cat. No.
0.1 ml concentrate	235R-14
0.5 ml concentrate	235R-15
1 ml concentrate	235R-16
1 ml predilute	235R-17
7 ml predilute	235R-18
5 Positive Control Slides	235S



References: 1) Agaimy A, et al. Mod Pathol. 2013; 26:995-1003. 2) Espinosa I, et al. Am J Surg Pathol. 2008; 32:210-8. 3) Miwa S, et al. J Gastroenterol. 2008; 43:531-7. 4) Parfitt JR, et al. Histopathology. 2008; 52:816-23. 5) West RB, et al. Am J Pathol 2004; 165:107-13.

Rev. 0.0

©2016 Sigma-Aldrich Co. LLC. All rights reserved. SIGMA-ALDRICH and Cell Marque are trademarks of Sigma-Aldrich Co. LLC.

Distributed by Abacus dx

1800 ABACUS (AUS) 0800 222 170 (NZ) | info@abacusdx.com | www.abacusdx.com

abacus dx