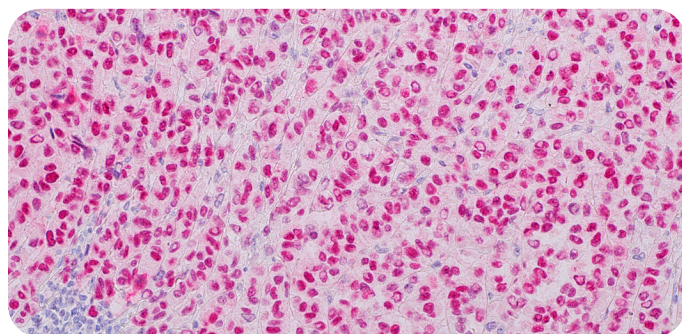


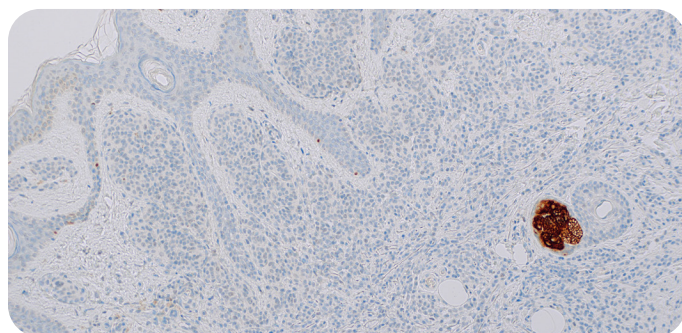
## Cell Marque™ Tissue Diagnostics

**PRAME (EP461)****Rabbit Monoclonal Antibody**

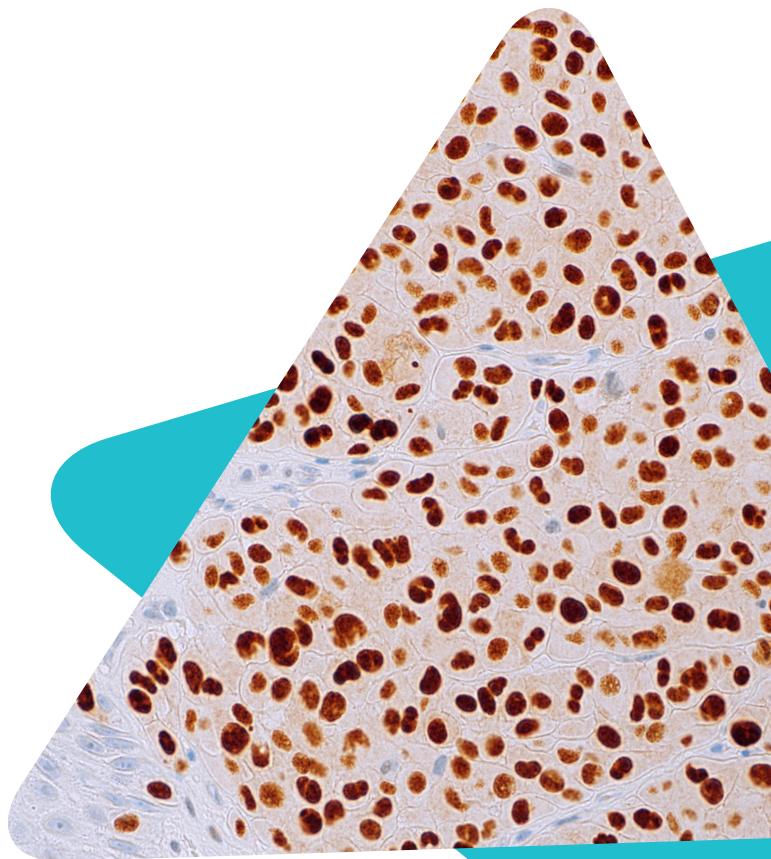
PRAME (PReferentially-expressed Antigen in MELanoma) is a gene encoded on the 22q11-22 chromosomal sequence and encodes a 509 amino acid residue protein.<sup>1</sup> PRAME is a melanoma antigen that is preferentially expressed in tumors and is recognized by cytotoxic T lymphocytes.<sup>2,3</sup> PRAME can be used to distinguish between malignant melanoma cells and nevus cells,<sup>4</sup> and therefore may be useful for diagnostic purposes to support a suspected case of melanoma. PRAME is considered a cancer-testis antigen (CTA)<sup>5</sup> and is not strongly expressed in most other normal tissues. PRAME is positively expressed in about half of uveal melanomas,<sup>6</sup> and the majority of mucosal melanomas.<sup>7</sup>



Melanoma



Benign Nevus



Skin Melanoma

**Ordering Information**

Description	Cat No.
0.1 mL concentrate	484R-14
0.5 mL concentrate	484R-15
1.0 mL concentrate	484R-16
1.0 mL predilute	484R-17
7.0 mL predilute	484R-18
25 mL predilute	484R-10



### Intended Use:

The product herein is intended for laboratory use in the detection of PRAME in formalin-fixed, paraffin-embedded tissue stained in qualitative immunohistochemistry (IHC) testing. This product is not a stand-alone diagnostic, and cannot be used for diagnosis, treatment, prevention, or mitigation of disease.

### Product Information:

**Visualization:** Nuclear

**Controls:** Melanoma

**Dilution Range:** 1:25–1:50

**Associated Specialty:** Dermatopathology

### References:

1. Wadelin, Frances et al. "Leucine-rich repeat protein PRAME: expression, potential functions and clinical implications for leukaemia." *Molecular cancer* vol. 9 226. 27 Aug. 2010, doi:10.1186/1476-4598-9-226
2. Lezcano, Cecilia et al. "PRAME Expression in Melanocytic Tumors." *The American journal of surgical pathology* vol. 42,11 (2018): 1456-1465. doi:10.1097/PAS.0000000000001134
3. Ikeda, H et al. "Characterization of an antigen that is recognized on a melanoma showing partial HLA loss by CTL expressing an NK inhibitory receptor." *Immunity* vol. 6,2 (1997): 199-208. doi:10.1016/s1074-7613(00)80426-4
4. Lezcano, Cecilia et al. "Immunohistochemistry for PRAME in the Distinction of Nodal Nevi From Metastatic Melanoma." *The American journal of surgical pathology* vol. 44,4 (2020): 503-508. doi:10.1097/PAS.0000000000001393
5. Zhang, Wa et al. "PRAME expression and promoter hypomethylation in epithelial ovarian cancer." *Oncotarget* vol. 7,29 (2016): 45352-45369. doi:10.18632/oncotarget.9977
6. Gezgün, Gulcin et al. "PRAME as a Potential Target for Immunotherapy in Metastatic Uveal Melanoma." *JAMA ophthalmology* vol. 135,6 (2017): 541-549. doi:10.1001/jamaophthalmol.2017.0729
7. Toyama, Aimi et al. "Analyses of molecular and histopathologic features and expression of PRAME by immunohistochemistry in mucosal melanomas." *Modern pathology : an official journal of the United States and Canadian Academy of Pathology, Inc* vol. 32,12 (2019): 1727-1733. doi:10.1038/s41379-019-0335-4

Phone: +1 916.746.8900  
Fax: +1 916.746.8989  
Email: [international@cellmarque.com](mailto:international@cellmarque.com)  
[www.cellmarque.com](http://www.cellmarque.com)

Merck KGaA  
Frankfurter Strasse 250  
64293 Darmstadt, Germany

[MerckMillipore.com](http://MerckMillipore.com)

© 2021 Merck KGaA, Darmstadt, Germany and/or its affiliates. All Rights Reserved. Merck, the vibrant M, Sigma-Aldrich and Cell Marque are trademarks of Merck KGaA, Darmstadt, Germany or its affiliates. All other trademarks are the property of their respective owners. Detailed information on trademarks is available via publicly accessible resources.

MK\_FL7982EN Ver. 1.0 36078 05/2021



Distributed by Abacus dx

1800 ABACUS (AUS) 0800 222 170 (NZ) | [info@abacusdx.com](mailto:info@abacusdx.com) | [www.abacusdx.com](http://www.abacusdx.com)

abacus dx