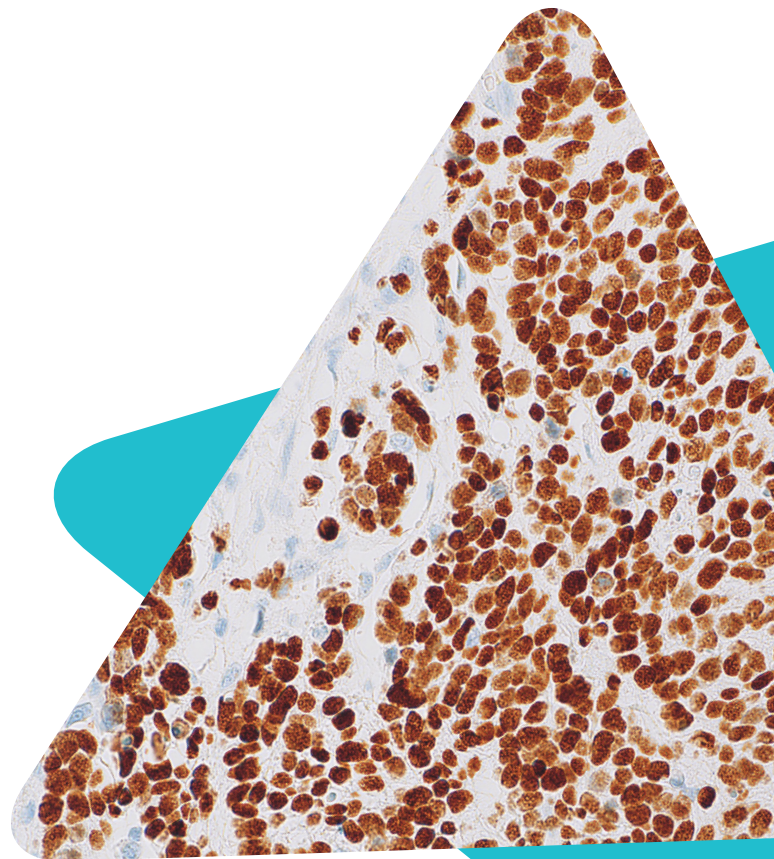


Cell Marque™ Tissue Diagnostics

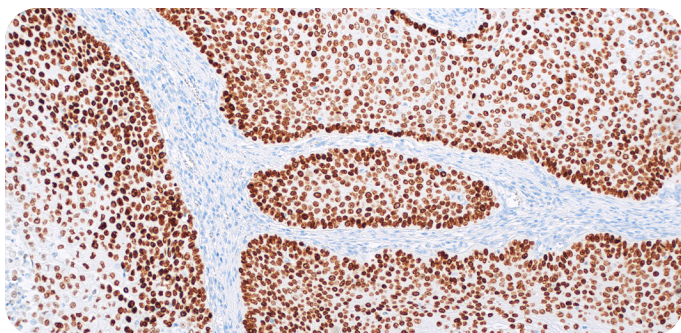
p40 (ZR8)

Rabbit Monoclonal Antibody

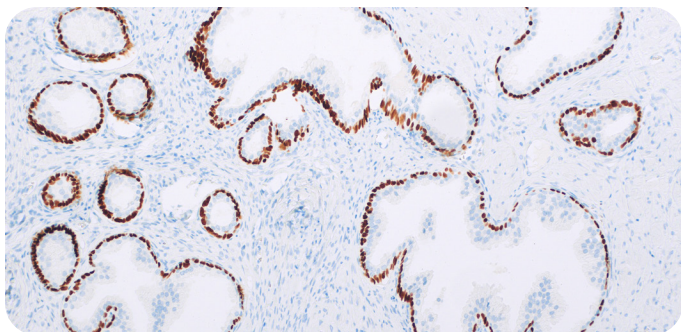
p40 is an isoform of p63, a transcription factor that regulates many cell activities, including cell proliferation, maintenance, and differentiation. It performs as a sensitive and specific tool for aiding in the identification of squamous cell carcinoma of the lung. In addition to its utility as a squamous differentiation marker, p40 has also been proven to be a valuable marker for highlighting myoepithelial and basal cell populations in prostate, breast, skin, and salivary gland.¹⁻⁵ Strong p40 expression is frequently observed in esophageal cancerous squamous lesions.⁶ Immunohistochemical detection of p40 can also be helpful in identifying urothelial carcinoma.⁷ In cases of prostate carcinoma, p40 is almost always found to be negative for basal cell staining.⁸



Lung squamous cell carcinoma



Lung squamous cell carcinoma



Benign prostate hyperplasia

Ordering Information

Description	Cat No.
0.1 mL concentrate	483R-14
0.5 mL concentrate	483R-15
1.0 mL concentrate	483R-16
1.0 mL predilute	483R-17
7.0 mL predilute	483R-18
25 mL predilute	483R-10



Intended Use:

The product herein is intended for laboratory use in the detection of the p40 protein in formalin-fixed, paraffin-embedded tissue stained in qualitative immunohistochemistry (IHC) testing. This product is not a stand-alone diagnostic, and cannot be used for diagnosis, treatment, prevention, or mitigation of disease.

Product Information:

Visualization: Nuclear

Controls: Lung squamous cell carcinoma, Urothelial carcinoma, Prostate

Dilution Range: 1:100-1:200

Associated Specialty: Genitourinary (GU) Pathology

References:

1. Bishop, Justin A et al. "p40 (Δ Np63) is superior to p63 for the diagnosis of pulmonary squamous cell carcinoma." *Modern pathology: an official journal of the United States and Canadian Academy of Pathology, Inc* vol. 25,3 (2012): 405-15. doi:10.1038/modpathol.2011.173
2. Alomari, Ahmed K et al. "p40 is a more specific marker than p63 for cutaneous poorly differentiated squamous cell carcinoma." *Journal of cutaneous pathology* vol. 41,11 (2014): 839-45. doi:10.1111/cup.12388
3. Pelosi, Giuseppe et al. "The impact of immunohistochemistry on the classification of lung tumors." *Expert review of respiratory medicine* vol. 10,10 (2016): 1105-21. doi:10.1080/17476348.2017.1235975
4. Walia, Ritika et al. "p40 & thyroid transcription factor-1 immunohistochemistry: A useful panel to characterize non-small cell lung carcinoma-not otherwise specified (NSCLC-NOS) category." *The Indian journal of medical research* vol. 146,1 (2017): 42-48. doi:10.4103/ijmr.IJMR_1221_15
5. Affandi, Khairunisa Ahmad et al. "p40 Immunohistochemistry Is an Excellent Marker in Primary Lung Squamous Cell Carcinoma." *Journal of pathology and translational medicine* vol. 52,5 (2018): 283-289. doi:10.4132/jptm.2018.08.14
6. Geddert, Helene et al. "The role of p63 and Δ Np63 (p40) protein expression and gene amplification in esophageal carcinogenesis." *Human Pathology*. 34,9 (2003): 850-856. doi: 10.1016/s0046-8177(03)00342-3.
7. Brandler, Tamar C et al. "Usefulness of GATA3 and p40 immunostains in the diagnosis of metastatic urothelial carcinoma in cytology specimens." *Cancer cytopathology* vol. 122,6 (2014): 468-73. doi:10.1002/cncy.21424
8. Brustmann, Hermann. "p40 as a Basal Cell Marker in the Diagnosis of Prostate Glandular Proliferations: A Comparative Immunohistochemical Study with 34betaE12." *Pathology research international* vol. 2015 (2015): 897927. doi:10.1155/2015/897927

Phone: +1 916.746.8900
Fax: +1 916.746.8989
Email: international@cellmarque.com
www.cellmarque.com

Merck KGaA
Frankfurter Strasse 250
64293 Darmstadt, Germany

SigmaAldrich.com

© 2021 Merck KGaA, Darmstadt, Germany and/or its affiliates. All Rights Reserved. Merck, the vibrant M, Sigma-Aldrich and Cell Marque are trademarks of Merck KGaA, Darmstadt, Germany or its affiliates. All other trademarks are the property of their respective owners. Detailed information on trademarks is available via publicly accessible resources.

MK_FL8167EN Ver. 0.0 36608 07/2021



Distributed by Abacus dx

1800 ABACUS (AUS) 0800 222 170 (NZ) | info@abacusdx.com | www.abacusdx.com

abacus dx