



CellaVision® DM9600

The CellaVision DM9600 is designed to automate and simplify the process of performing blood and body fluid differentials. The system leverages high-speed robotics and digital imaging to automatically locate and capture high-quality images of cells. When implemented together with CellaVision applications and supporting software, the CellaVision DM9600 becomes the engine of a streamlined and automated digital cell morphology workflow, enabling laboratories to work smarter and perform better.

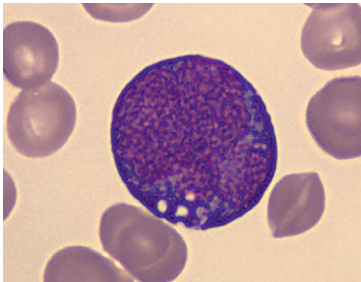
Developed to meet the needs of big labs with high-volume testing requirements:

- **Loading capacity:** 96 slides, with continuous feed
- **Throughput:** Approximately 30 slides / h*

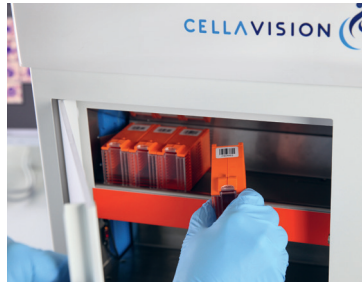


Why CellaVision DM9600?

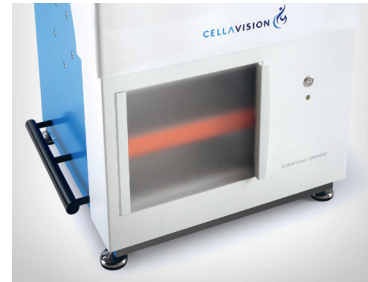
Automates analysis of WBCs, RBCs and body fluids and is constructed on a proven technological platform that is reliable, easy to operate and requires minimal maintenance.



Best-in-class image quality



Walk-away automation



Compact bench-top design

Features:

- Automatically captures digital images of cells from blood smears and body fluid preparations
- Loading capacity of 96 slides, with mechanism for continuous feed
- Approximately 30 slides throughput per hour*
- Creates digital scan of pre-defined area of any interesting specimen

CellaVision® DM9600

TECHNICAL SPECIFICATIONS

SLIDE HANDLING

- Requires barcode labeled slides with clipped/round corners
- Slides are loaded into magazines with the capacity of 12 slides. Fits eight magazines.
- Analyzes slides with blood smears and body fluids either batched in dedicated magazines or mixed when interfaced to a LIS

IMMERSION OIL

Automatic dispensing

QUALITY CONTROL

Cell location accuracy test for the verification of the hardware and stain quality

ARCHIVING OF RESULTS AND IMAGES

LAN

STORAGE CAPACITY

- Primary storage: On local hard drive up to 4,000 slides (20 GB)
- Secondary storage: Unlimited when transferred to external storage media

PRINTER SUPPORT

Laser/inkjet printers supported by Windows

COMMUNICATIONS

- Bi-directional LIS support, ASTM
- Ethernet 10/100 Mbps
- Multiple CellaVision DM analyzers can share a database
- E-mail

SYSTEM COMPONENTS

- Slide Scanning Unit
- CellaVision DM Software
- System Computer with Windows

ELECTRONICAL SPECIFICATIONS

- Voltage input: 100 to 240 VAC
- **Current input:**
- System computer: 1.4 to 0.7 A
- Slide scanning unit: 0.6 to 0.3 A

CLEARANCE

CE, 510(k)

SIZE (Width x Depth x Height)

- 580 × 560 × 790 mm
- 22.8 × 22 × 31,1 inches

WEIGHT

93 kg / 205 lbs

THROUGHPUT*

Peripheral Blood:

- Up to 30 slides/h for complete differential (100 WBC+RBC+PLT)

Digital Slides:

- Up to 20 slides/h for 10 × 10 mm in 10x
- Up to 1,5 slides/h for 10 × 10 mm in 10x + 50x
- **Body Fluids (based on 6 mm sample area):**
- Up to 15 slides/h for differential (100 WBCs + 10x)
- Up to 3 slides/h for differential (100 WBCs + 10x + 50x)

OPTIONAL SOFTWARE / APPLICATIONS

- CellaVision® Advanced RBC Application
- CellaVision® Body Fluid Application
- CellaVision® Remote Review Software
- CellaVision® Server Software
- CellaVision® Proficiency Software

ACCESSORIES

- CellaVision Immersion Oil Pack
- Barcode labeled slide magazines
- QC barcode labels
- Light tower
- Label printer kit

* Processing time may vary depending on smear quality, WBC concentration and number of non-WBCs. Specifications are subject to change without notice. This product may not be available in all markets.

For a more detailed presentation, please visit www.cellavision.com

Distributed by Abacus dx

1800 ABACUS (AUS) 0800 222 170 (NZ) | info@abacusdx.com | www.abacusdx.com

abacus dx