

More data. Faster. Less sample volume.

Chicken Cytokine Multiplex Analysis

The MILLIPLEX® Chicken Cytokine/Chemokine Panel is the first multiplex panel designed to analyze your choice of up to 12 chicken cytokines within the same sample. Save valuable time, money, and sample volume while dramatically increasing the number of data points generated from a single 96-well plate assay.

MILLIPLEX® Chicken Cytokine/Chemokine Panel

Cat. No.	Analytes	Sample Types
GCYT1-16K, GCYT1-16K-PX12, GCYT1-16K-PXBK12	IFN α , IFN γ , IL-2, IL-6, IL-10, IL-16, IL-21, MIP-1 β , MIP-3 α , RANTES, M-CSF, VEGF	Chicken serum, plasma and PBMC samples

Kit Formats: Select the analytes you want, choose the 12-plex premixed kit, or the custom premix option for an additional charge.

Complete Kits: A convenient “all-in-one” box format that gives you the assurance of having all the necessary reagents you need to run your assay.

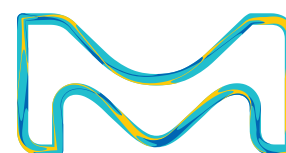
Our trusted MILLIPLEX® assay specifications guarantee consistent performance over time.

Analyte	Standard Curve Range (pg/mL)	Sensitivity minDC +2SD (pg/mL)	Precision		Accuracy (%)
			Intra-Assay (% CV)	Inter-Assay (% CV)	
IL-16	7.3 – 30,000	8.74	<10	<20	97
IFN α	3.6 – 15,000	3.10	<10	<20	96
IFN γ	18.3 – 75,000	12.58	<10	<20	97
IL-10	24.4 – 100,000	25.82	<10	<20	97
IL-21	36.6 – 150,000	31.30	<10	<20	98
IL-2	48.8 – 200,000	45.68	<10	<20	99
M-CSF	9.7 – 40,000	7.01	<10	<20	98
IL-6	122.1 – 500,000	71.46	<10	<20	96
MIP-3 α	18.3 – 75,000	15.50	<10	<20	95
MIP-1 β	4.8 – 20,000	5.76	<10	<20	100
RANTES	12.2 – 50,000	10.16	<10	<20	100
VEGF	4.8 – 20,000	5.13	<10	<20	99

Results from overnight protocol; 2 hour protocol option also available.

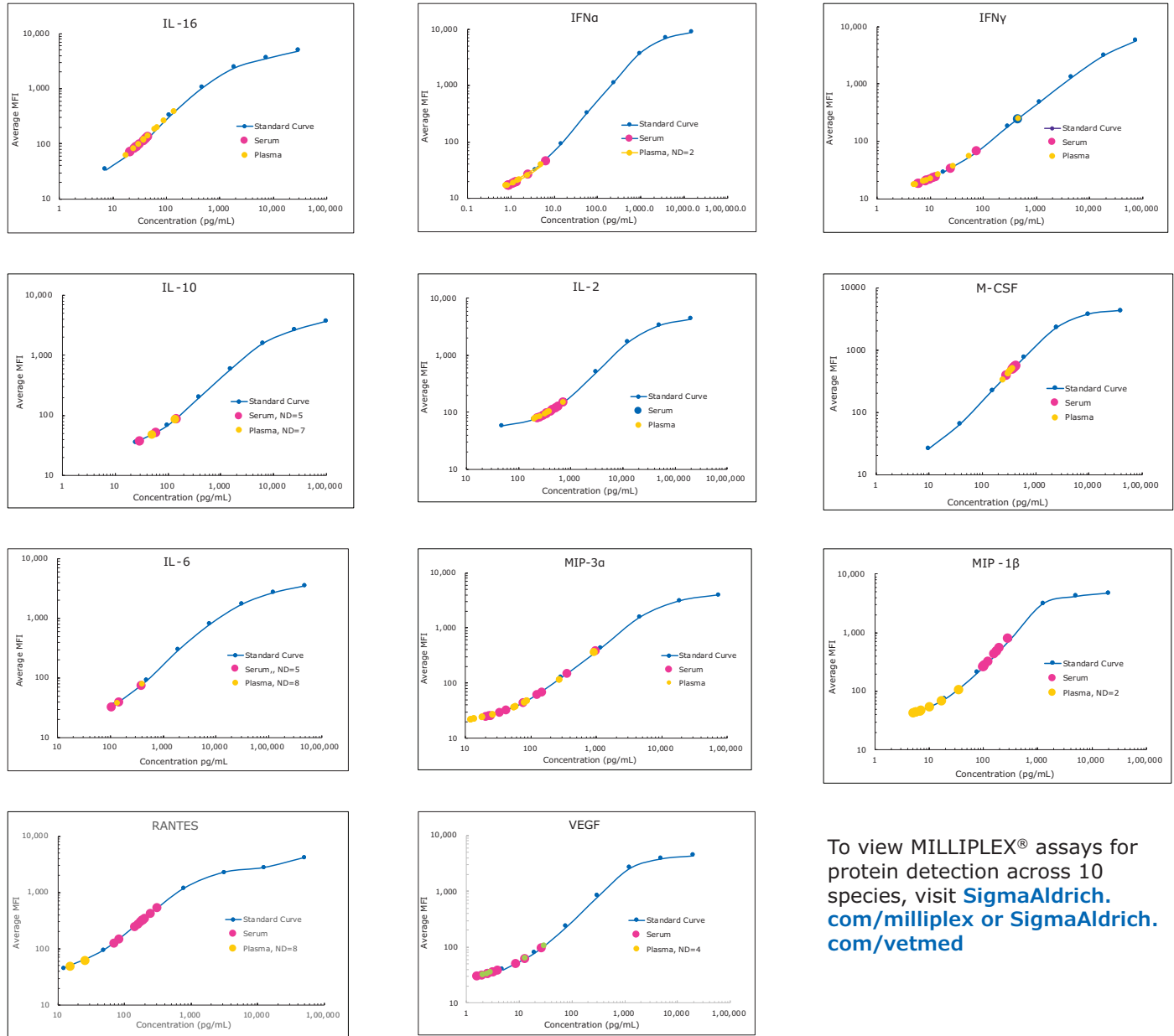
Comparison of MILLIPLEX® Assays vs. Traditional ELISA

Assay Parameter	MILLIPLEX® Assay	Traditional ELISA
Number of 96-well plates	1 plate	14 plates
Total plate run time	1 hour	14 hours
Results per plate (duplicate samples)	570	40
Total volume of sample required (duplicate samples)	25 μ L (1:4 sample dilution)	750 μ L
Lower Limit of Detection	~ 1 pg/mL	~ 1 pg/mL



Example Data Using Cat. No. GCYT1-16K

The following graphs show analyte data from normal healthy chicken plasma and serum samples (n=8 each) assayed according to the overnight protocol of the MILLIPLEX® Chicken Cytokine/Chemokine Panel. "ND=n" indicates the number of samples for which the analyte was not detected in the assay. The analyte IL-21 was not detected in these samples, however it is expected that certain disease/inflammation states will show IL-21 values in assay.



To view MILLIPLEX® assays for protein detection across 10 species, visit SigmaAldrich.com/milliplex or SigmaAldrich.com/vetmed

All MILLIPLEX® panels, custom assays, reagents, and ELISAs are manufactured in facilities which are ISO 9001-2015 compliant and are for research use only (RUO), not for use in clinical or for medical diagnostic purposes.

To place an order or receive technical assistance in Europe, please call Customer Service:
 France: 0825 045 645 Spain: 901 516 645 Option 1
 Germany: 069 86798021 Switzerland: 0848 645 645
 Italy: 848 845 645 United Kingdom: 0870 900 4645

For other countries across Europe, please call: +44 (0) 115 943 0840
 Or visit: MerckMillipore.com/offices
 For Technical Service visit: MerckMillipore.com/techservice

Merck KGaA
 Frankfurter Strasse 250
 64293 Darmstadt, Germany

MerckMillipore.com

© 2020 Merck KGaA, Darmstadt, Germany and/or its affiliates. All Rights Reserved. Merck, the vibrant M and Millipore are trademarks of Merck KGaA, Darmstadt, Germany or its affiliates. All other trademarks are the property of their respective owners. Detailed information on trademarks is available via publicly accessible resources.

MK_FL7120EN Ver. 1.0 33898 11/2020



Distributed by Abacus dx

1800 ABACUS (AUS) 0800 222 170 (NZ) | info@abacusdx.com | www.abacusdx.com

abacus dx