

FormSAFE

The safe alternative to conventional prefilled formalin containers for small biopsies



MILESTONE
HELPING
PATIENTS

MILESTONE: TOWARD A SAFER,

Today's reality

In December 2013 the EU-REACH (Registration, Evaluation, Authorization and Restriction of Chemicals) adopted a decision to reclassify formaldehyde as a Category 1B carcinogen and Category 2 mutagen under the EU CLP (Classification, Labeling and Packaging) Regulation.

As a Category 1 carcinogen, formaldehyde use will be regulated by the restrictive Carcinogens Directive in EU workplaces. This will mandate the replacement of formaldehyde with less dangerous alternatives and, when that is not possible, restricting exposure using engineering and other controls. Mandatory prevention and protection obligations are among others:

If substitution is not technically feasible because the substance is unique and irreplaceable, use a closed system to comply with existing occupational exposure limit values.

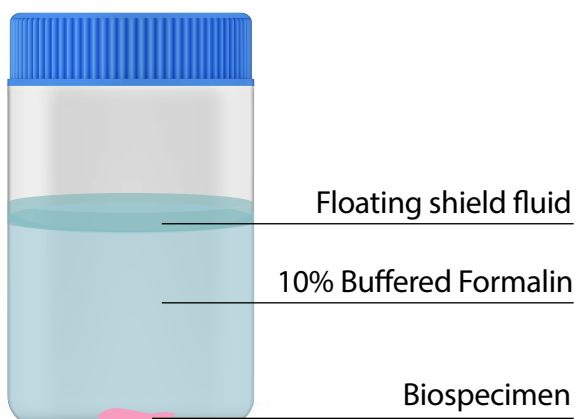
The challenge

Imagine being able to operate with formalin prefilled biopsies containers without being exposed to toxic fumes.

*“FormSAFE,
a vision realized”*



Milestone has introduced the concept of a multi-layered liquid container to reduce the risk of formalin exposure to the operator.

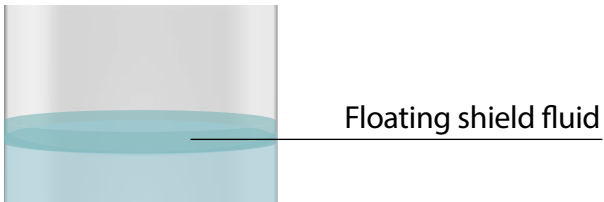


FormSAFE provides an excellent alternative to traditional prefilled containers when personnel are concerned with formalin exposure during collection, transport and storage.

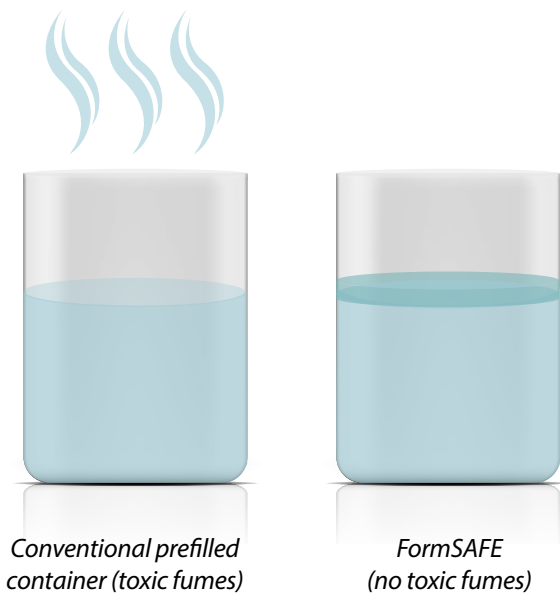
A second stratified fluid component maintains a position above the filled formalin and acts as a protective floating shield which prevents fixative fumes from escaping the container.

BETTER WORK ENVIRONMENT

Designed for SAFETY



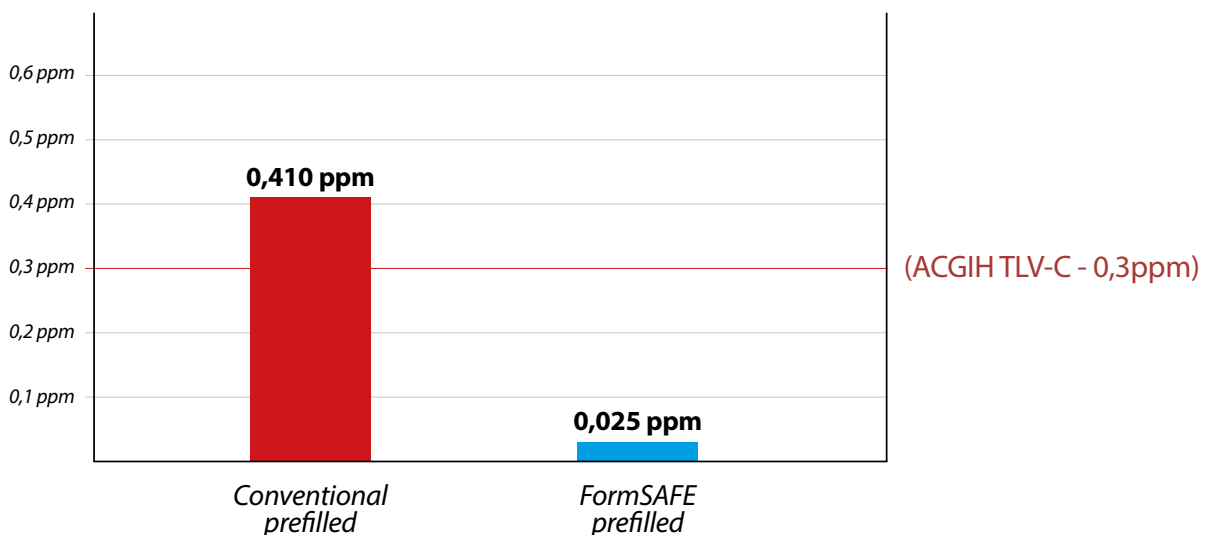
This floating shield fluid is immiscible with formalin, having a lower specific gravity, and covers the top surface to form a protective film. This proprietary fluid is nontoxic and inert to biospecimens: if the container is agitated, the floating layer quickly reforms.



The floating shield fluid protects the operator from the exposure to toxic fumes.

FormSAFE vs Conventional prefilled

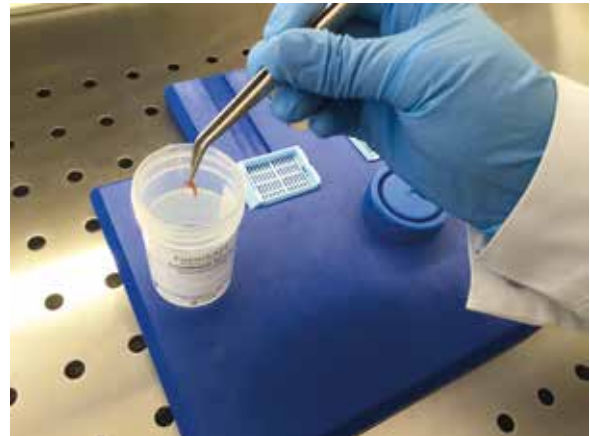
(NIOSH 2016:2003 Analytical Method ppm formaldehyde for 10 min at 10 cm from surface)



Designed for FLEXIBILITY and EFFICIENCY



In OR Suites or Physician offices



In the AP Laboratory

The FormSAFE floating shield technology eliminates the risk of exposure to formalin fumes both at the collection and grossing/processing points.

Designed for SIMPLICITY

Same operation as with conventional containers:

1. Open container
2. Place biospecimen in formalin
3. Close container with cap

FormSAFE Unique Features

1. Increased operator safety in OR and AP labs
2. No change in collecting, transporting, storing workflow
3. Easy to use

Technical Specifications

- 60 ml container
- 30ml 10% neutral buffered formalin
- Floating shield fluid



Box of 50 FormSAFE containers

MILESTONE



HELPING
PATIENTS

MILESTONE Srl - Via Fatebenefratelli, 1/5 - 24010 Sorisole (BG) - Italy
Tel: +39 035 4128264 - Fax: +39 035 575498
www.milestonemedsrl.com - email: medical@milestonesrl.com

UNI EN ISO 9001: 2008 / UNI EN ISO 13485:2012 CERTIFIED

MILESTONE MEDICAL TECHNOLOGIES, INC.
6475 Technology Avenue, Suite F, Kalamazoo, MI 49009 - USA
Tel: 269-488-4950 - Toll-free: 866-995-5300 - Fax: 269-488-4949
www.milestonemed.com - email: info@milestonemed.com

CAT367EN-001

Distributed by Abacus dx

1800 ABACUS (AUS) 0800 222 170 (NZ) | info@abacusdx.com | www.abacusdx.com

abacus dx