

Advance Your Primate Studies

Our new non-human primate panel: flexible panel options and an expanded selection of analytes

The MILLIPLEX® Non-Human Primate Cytokine/Chemokine/Growth Factor Panel A offers measurement of 48 individual immune markers, including new analytes previously not available for non-human primates. Our new 48-plex panel offers you the flexibility to choose any combination of analytes or select a 48-plex or 38-plex premixed panel. This panel has been fully verified in serum and plasma for rhesus macaques and cynomolgus macaques, with additional testing in other non-human primate species. View our protocol for full details.

MILLIPLEX® Non-Human Primate Cytokine/Chemokine/Growth Factor Panel A

Cat. Nos. PRCYTA-40K*; 38-plex premixed kit: PRCYTA-40K-PX38, PRCYTA-40K-BK38; 48-plex premixed kit: PRCYTA-40K-PX48, PRCYTA-40K-BK48

*Available for customizing your premix!

Analytes: See table below

Sample Type: serum, plasma, cell/tissue culture supernatants

Standard Curves: Broad, fixed ranges for lot-to-lot consistency, optimized for each analyte

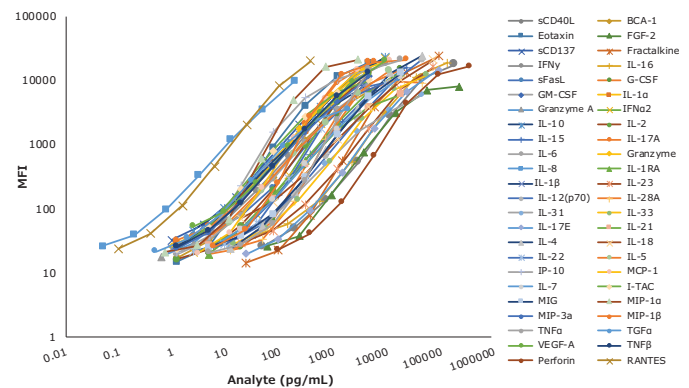


Figure 1. Non-Human Primate Cytokine/Chemokine/Growth Factor Panel A Standard Curves. Standard Curves for all analytes performed in MXPRSM-A serum matrix except RANTES that was in L-AB assay buffer. This assay was performed using the Cat. No. PRCYTA-40K overnight protocol.

Table 1. MILLIPLEX® Non-Human Primate Cytokine/Chemokine/Growth Factor Panel A Assay Specifications

Analyte	Standard Curve Range (pg/mL)	Sensitivity MinDC+ 2SD (pg/mL)*
sCD40L°	200,000-48.83	49.95
BCA-1	5,000-1.22	1.06
Eotaxin	5,000-1.22	3.21
FGF-2	250,000-61.04	88.34
sCD137°	4,000-0.98	1.03
Fractalkine	100,000-24.41	13.42
IFNy°	10,000-2.44	2.42
IL-16	150,000-36.62	23.42
sFasL°	20,000-4.88	5.39
IL-12 (p70)°	50,000-12.21	4.57
IL-28A	50,000-12.21	17.72
IL-31	50,000-12.21	5.63
IL-33°	60,000-14.65	13.09
IL-17E	100,000-24.41	17.34
IL-21°	20,000-4.88	2.67
IL-4°	50,000-12.21	6.09

Analyte	Standard Curve Range (pg/mL)	Sensitivity MinDC+ 2SD (pg/mL)*
IL-18°	80,000-19.53	10.98
IL-22°	10,000-2.44	4.88
G-CSF°	20,000-4.88	8.62
GM-CSF°	5,000-1.22	0.62
IL-1α	5,000-1.22	2.94
Granzyme A°	2,500-0.61	1.01
IFNγ2°	10,000-2.44	2.62
IL-10°	10,000-2.44	0.99
IL-2°	5,000-1.22	1.96
IL-15°	25,000-6.10	4.43
IL-17A	5,000-1.22	0.88
IL-6°	5,000-1.22	1.03
Granzyme B°	4,000-0.98	0.36
IL-8°	200-0.05	0.07
IL-1RA°	20,000-4.88	2.23
IL-1β°	4,000-0.98	0.37

Analyte	Standard Curve Range (pg/mL)	Sensitivity MinDC+ 2SD (pg/mL)*
IL-23°	80,000-19.53	9.78
IL-5°	12,000-2.93	1.62
IP-10°	5,000-1.22	1.13
MCP-1°	12,500-3.05	4.53
IL-7°	20,000-4.88	3.55
I-TAC°	5,000-1.22	0.81
MIG°	20,000-4.88	5.51
MIP-1α°	3,000-0.73	2.09
MIP-3α°	5,000-1.22	0.63
MIP-1β°	25,000-6.10	8.60
TNFα°	20,000-4.88	5.91
RANTES°	400-0.10	0.12
TGFβ°	2,000-0.49	1.19
VEGF-A°	10,000-2.44	1.08
TNFβ	5,000-1.22	0.45
Perforin°	400,000-97.66	73.95

* Assay sensitivities (minDC, minimum detectable concentrations, + 2 standard deviations) calculated using the overnight assay protocol with n = 11 assays, view our protocol for more information.

°Contained in the 38-plex premixed kit.

More Analytes in One Easy-to-Use Kit

Select only the analytes you need or run all 48 using our established MILLIPLEX® workflow

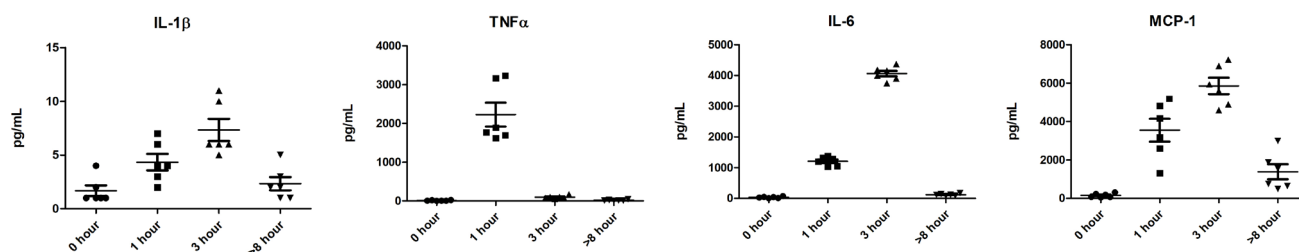


Figure 2. Three healthy rhesus macaques (*Macaca mulatta*) were dosed intravenously with 10 µg/kg lipopolysaccharide (LPS) in 0.5 mL saline (obtained from Merck) at time zero and serum (n=3)/plasma (n=3) samples were taken at 0, 1, 3, and 8 hours (obtained from BioIVT). Concentrations of IL-1β, TNFα, IL-6, and MCP-1 are shown over the LPS time course.

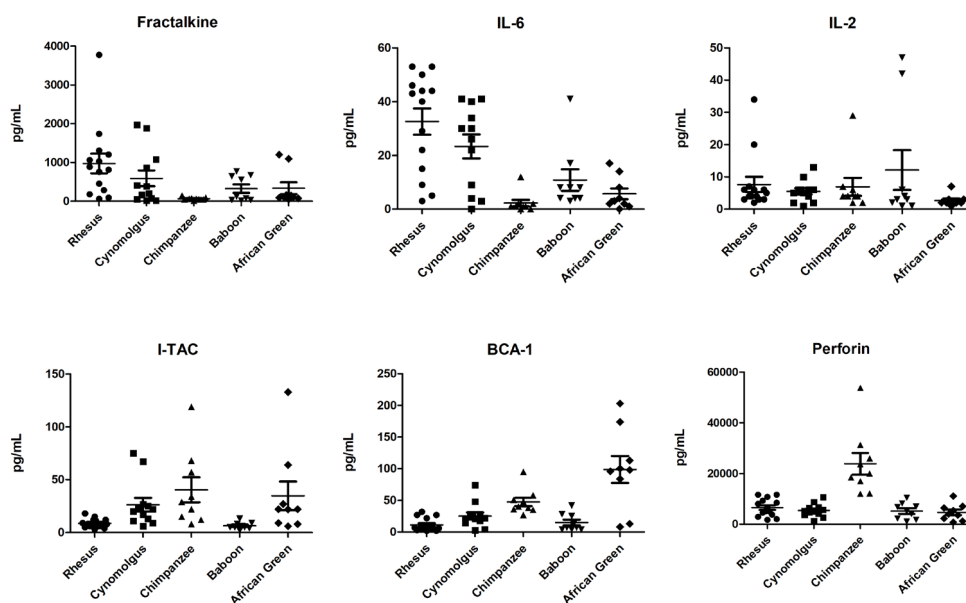


Figure 3. Endogenous levels were tested in healthy serum/plasma samples from five non-human primate species (obtained from BioIVT), including rhesus macaques (*Macaca mulatta*, n=14), cynomolgus macaques (*Macaca fascicularis*, n=12), chimpanzee (n=9), baboon (n=9), and African green monkeys (*Chlorocebus sabaeus*, n=9), using the Cat. No. PRCYTA-40K panel. Concentrations of six analytes in the non-human primate species are shown.

MILLIPLEX® kits are manufactured in facilities which are ISO 9001-2015 compliant and are for research use only (RUO), not for use in clinical or for medical diagnostic purposes.

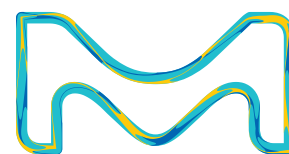
To view our large portfolio of MILLIPLEX® assays for Luminex® technology, visit SigmaAldrich.com/milliplex

To place an order or receive technical assistance
 Order/Customer Service: SigmaAldrich.com/order
 Technical Service: SigmaAldrich.com/techservice
 Safety-related Information: SigmaAldrich.com/safetycenter

SigmaAldrich.com

Merck KGaA
 Frankfurter Strasse 250
 64293 Darmstadt, Germany

MerckMillipore.com



© 2021 Merck KGaA, Darmstadt, Germany and/or its affiliates. All Rights Reserved. Merck, the vibrant M and Millipore, are trademarks of Merck KGaA, Darmstadt, Germany or its affiliates. All other trademarks are the property of their respective owners. Detailed information on trademarks is available via publicly accessible resources.

MK_FL8067EN Ver. 0.1 36486 07/2021

Distributed by Abacus dx

1800 ABACUS (AUS) 0800 222 170 (NZ) | info@abacusdx.com | www.abacusdx.com

abacus dx