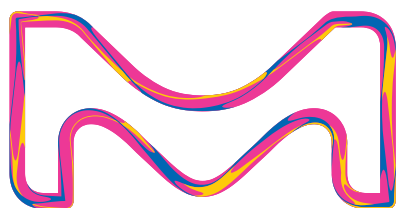


Analyte Quarterly

Vol. 2 2021

Look closer at your assays, platforms, and results in your multiplex and singleplex biomarker detection assays

- SMC™ (Single Molecule Counting) High Sensitivity Assays
- ELISAs & RIAs
- MILLIPLEX® Multiplex Assays
- Custom Assay Development
 - SMC™ Technology
 - MILLIPLEX® Assays



The life science business of Merck operates as MilliporeSigma in the U.S. and Canada.

Millipore®

Preparation, Separation,
Filtration & Monitoring Products

We Strive for the Ideal Immunoassay

Researchers rely on commercial immunoassays to study biomarker expression in a wide variety of research applications. With recent technological advances pushing the limits of protein quantification in sensitivity and multiplex analyte detection, we are committed to delivering the best possible immunoassays for your research needs. Whether you are using our industry-leading MILLIPLEX® multiplex panels to broadly survey multiple analytes, performing sub-picogram/mL biomarker analysis using the Single Molecule Counting (SMC™) ultrasensitive immunoassay platform, or examining single proteins with our tried-and-true ELISAs and RIAs, you can confidently expect reliable measurements, a simplified user experience, and knowledgeable scientific partners to help drive your biomarker project from hypothesis to publication.

Look Closer at our Advantages

Published Performance

- Broadest analyte selection across research areas and species
- Over 14,000 published papers with data generated using our immunoassays
- Customizable, premixed, and bulk kit options to fit your exact research needs

Quality

- Over four decades of immunoassay development and manufacturing expertise
- Assays developed and quality tested for accurate, reproducible, and biologically relevant protein measurements
- Manufactured in facilities which are ISO 9001:2015 compliant, our products are for research use only (RUO) and not for use in clinical or for medical diagnostic purposes

User Experience

- Kit components pre-optimized for easy use and minimal preparation steps
- Comprehensive protocols with recommendations for optimal sample preparation
- Knowledgeable in-house and field-based scientific support for assays and instruments
- State-of-the-art Belysa® software for powerful immunoassay analysis and reporting

Complete Immunoassay Testing Platforms



	MILLIPLEX® Panels	SMC™ Platform	ELISAs and RIAs
	Accurately measure up to 48 proteins in a sample	Explore previously undetectable proteins	Trusted standards for protein quantitation
Single/Multiplex	Multiplex	Singleplex	Singleplex
Sensitivity	Up to pg/mL	Up to fg/mL	Up to pg/mL
Sample size	~25 µL (may be diluted)	5-100 µL	50-100 µL
Dynamic range	3-5.5 log	4-5 log	2-3 log
Assay	MILLIPLEX® or any Luminex® assay	SMC™ assay	Any ELISA or RIA
Instrument	Luminex®: xMAP® INTELLIFLEX, FLEXMAP 3D®, Luminex® 200™ Systems	SMCxPRO™ System	Any ELISA reader, or gamma counter (for RIA)

New Immunoassay Products

NEW! MILLIPLEX®, Single Molecule Counting (SMC™), and ELISA Kits and Instruments

Description	Species	Cat. No.
MILLIPLEX® Panels		
MILLIPLEX® Immuno-Oncology Checkpoint Protein Panel 1	Mouse	MCKP1-110K
SMC™ Kits		
SMC™ Total Tau High Sensitivity Immunoassay Kit	Human	03-0185-00
SMC™ NGFβ High Sensitivity Immunoassay Kit (MTO*)	Human	03-0200-00
SMC™ GFAP High Sensitivity Immunoassay Kit	Human	03-0203-00
SMC™ IgM High Sensitivity Immunoassay Kit	Human	03-0204-00
Conferma™ ELISA Kits		
IL-6 Conferma™ ELISA	Human	EZIL6-98K
IL-8 Conferma™ ELISA	Human	EZHIL8-100K
MCP-1 Conferma™ ELISA	Human	EZMCP1-99KRM
SARS-CoV-2 ELISA Kits		
Anti-RBD IgG Human ELISA	Human	EZRBDG-110K
Anti-RBD IgM Human ELISA	Human	EZRBDM-120K
Anti-S1 IgG Human ELISA	Human	EZS1G-130K
Anti-S1 IgM Human ELISA	Human	EZS1M-140K
Luminex® xMAP® Instruments and Reagents		
xMAP® INTELLIFLEX RUO Instrument	—	INTELLIFLEX-RUO
xMAP® INTELLIFLEX DR-SE Instrument**	—	INTELLIFLEX-DRSE
xMAP® INTELLIFLEX Calibration Kit, 20 Uses, RUO	—	IFX-CAL-K20
xMAP® INTELLIFLEX Verification Kit, 20 Uses, RUO	—	IFX-PVER-K20

*MTO = made to order; **DR-SE = dual reporter side eject
For Research Use Only. Not For Use In Diagnostic Procedures.

Coming Soon

Description	Species	Cat. No.
MILLIPLEX® Panels		
MILLIPLEX® Complement Expanded Panel 1	Human	Coming Soon!
SMC™ Kits		
SMC™ IgE High Sensitivity Immunoassay Kit	Human	Coming Soon!



Explore the New xMAP® INTELLIFLEX System

Learn more and request information at SigmaAldrich.com/intelliflex

Design and purchase your own kit

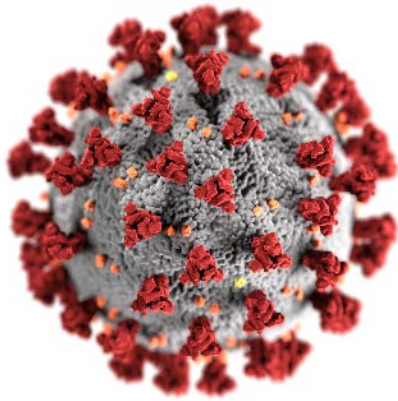
Search our MILLIPLEX® analyte offerings and order panels:

For customers in the United States, Canada, Denmark, Finland, Italy, Norway, Portugal, Spain, United Kingdom start your search here: SigmaAldrich.com/milliplex-order

For customers in all other countries start your search here: MerckMillipore.com/milliplex

Immunoassay Kits for COVID-19 Research

We are committed to providing researchers with reliable resources and tools to empower critical COVID-19 studies. Our MILLIPLEX®, SMC™, and ELISA assays assist in COVID-19 research efforts for critical vaccine development, epidemiology, and population research studies.



Multiplex Your COVID-19 Research with MILLIPLEX® Immunoassays

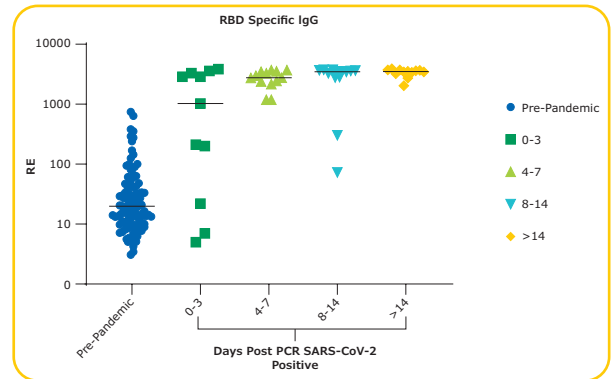
- **MILLIPLEX® SARS-CoV-2 Antigen Panels** for detection of human immunoglobulin isotypes IgG, IgM, and IgA to SARS-CoV-2 antigens: spike protein subunits S1 and S2, receptor binding domain (RBD), and nucleocapsid protein (N)
- **48-Plex MILLIPLEX® Human and Non-Human Primate Cytokine/Chemokine/Growth Factor Panel A** for cytokine analysis in COVID-19
- **MILLIPLEX® Human Autoimmune Autoantibody and Cytokine Autoantibody Panels** for understanding autoimmunity related to SARS-CoV-2 infection

Learn more about how MILLIPLEX® multiplex assays are being used to understand COVID-19 at SigmaAldrich.com/milliplex-covid-19

For Research Use Only. Not For Use In Diagnostic Procedures.

Single Molecule Counting (SMC™) Ultrasensitive Immunoassays for COVID-19 Research

- **Study early SARS-CoV-2 antibody responses** using SMC™ kits for SARS-CoV-2 RBD IgG and S1 IgA, with detectability within 3 days after qRT-PCR confirmed positivity
- **Achieve high sensitivity cytokine quantification** for key COVID-19 related inflammatory markers including IL-6, TNF- α , IL-10, IL-22, and IFN- γ
- **Probe the role of Type 1 interferons in COVID-19** using IFN- α and IFN- β assays
- **Characterize COVID-19 impact on heart and neurological health** with assays for cardiac troponin (cTnI), UCH-L1, Tau, α -synuclein, and GFAP

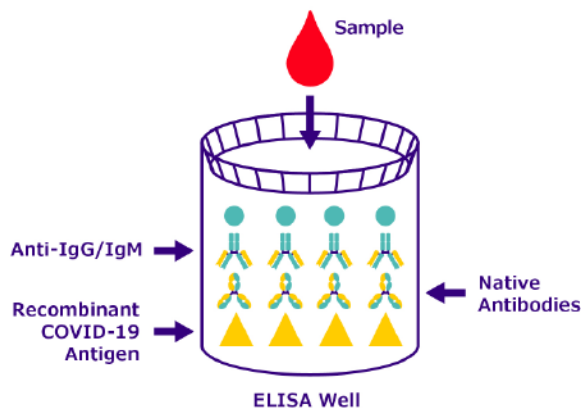


Check out our full analyte offerings on pages 7-10 and learn more about the SMC™ technology at SigmaAldrich.com/smc

For Research Use Only. Not For Use In Diagnostic Procedures.

Quantitative ELISAs for SARS-CoV-2 Research

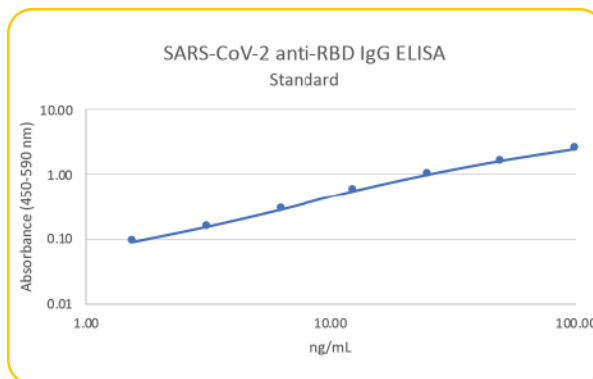
Use these direct ELISAs to quantitatively detect the circulating titer of IgG and IgM specific to the RBD or S1 proteins present on SARS-CoV-2. The assay utilizes recombinant antigen coated on the well to pull down circulating antibody which is titered against an isotype-specific monoclonal antibody to provide quantitation.



Related Products

Product Description	Cat. No.
Anti-RBD IgG Human ELISA	EZRBDG-110K
Anti-RBD IgM Human ELISA	EZRBDM-120K
Anti-S1 IgG Human ELISA	EZS1G-130K
Anti-S1 IgM Human ELISA	EZS1M-140K

For Research Use Only. Not For Use In Diagnostic Procedures.



Immunoassays for Vaccine Development

Our commitment to empowering the development of safe, effective, and timely vaccines includes powerful, efficient tools for assessing immunogenicity.

Multiplex with MILLIPLEX® Immunology Assays

Evaluating the immune response is a foundational need during the development of vaccines, as it is an early determinant of both vaccine efficacy and safety. Our MILLIPLEX® multiplex panels measure multiple immune markers in a single assay.

Learn more about multiplex solutions for human immune responses at SigmaAldrich.com/milliplex-human-cytokine

For Research Use Only. Not For Use In Diagnostic Procedures.

Harness Single Molecule Counting (SMC™) Technology

SMC™ technology offers unparalleled sensitivity which may enable the early detection (0 - 3 days) of post-vaccination antibody responses. Our 'homebrew' assay development kit allows your lab to develop assays specific to your vaccine, leveraging the sensitivity of the SMC™ platform to detect sparse targets.

See how SMC™ technology can enhance the measurement of vaccine response at SigmaAldrich.com/smc-immunology

For Research Use Only. Not For Use In Diagnostic Procedures.

Vaccines, empowered

by multiplex and ultrasensitive assays for measuring immune response

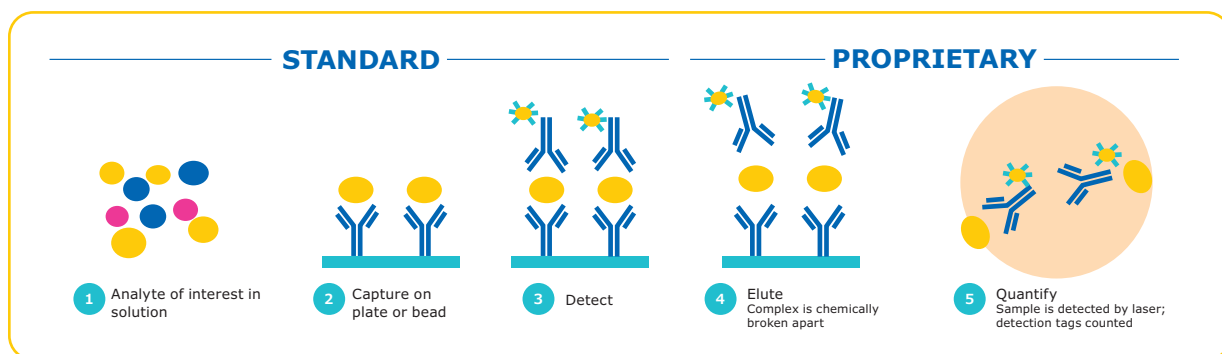
Explore comprehensive solutions for vaccine development at SigmaAldrich.com/vaccine-research

SMC™ Technology

Single Molecule Counting (SMC™) Technology: Reduced background + increased signal

SMC™ technology provides maximum immunoassay performance while following a workflow similar to traditional ELISA technology, as shown below. By combining a unique assay elution step and robust digital counting, SMC™ technology achieves improved signal-

to-noise ratios over traditional immunoassay technologies. The SMC™ technology thus provides enhanced quantification at both low and high levels of expression on one complete system.



Steps 2-3

Antibodies translate each biomarker into a signal

Step 4

Fluorescent dye-labeled detection antibodies dissociate from the immunocomplex

Step 5

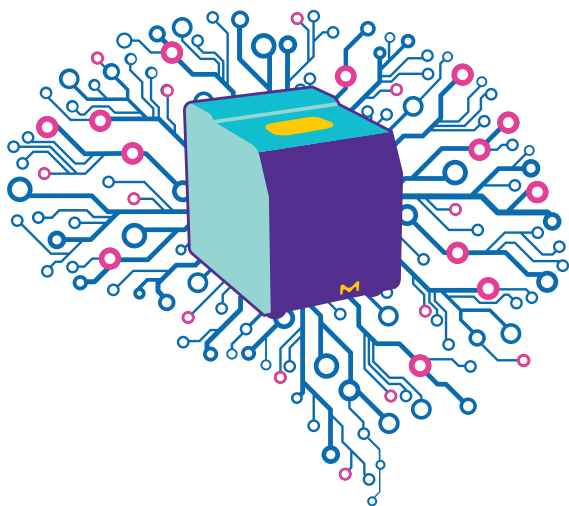
On the SMCxPRO™ instrument, signal is collected from free-floating fluorochromes using a rotating laser, camera, and counting individual molecules by an Avalanche Photodiode

Digital counting improves sensitivity and dynamic range

The SMCxPRO™ and Erenna® instruments capture the sum of all digital events counted above the background threshold. The digital event algorithm of the SMCxPRO™ instrument computes digital events across a spectrum of time series for a single standard. On the Erenna® instrument, at lower concentrations, photons are digitally counted as single molecules. At higher concentrations, molecules are counted in analog and a proprietary algorithm computes the total sum of all photons recorded. The digital counting of molecules thus improves the assay sensitivity and extends the assay dynamic range beyond what can be achieved with traditional methods.

SMC™ Technology Highlights

New SMC™ GFAP, Total Tau, and NPTX2 Assays Empower Cutting-Edge Neurology Biomarker Research



Protein biomarkers have become popular in neurology research for their role in normal nervous system development and for their impact on neurodegenerative disorders. As more studies link protein overexpression, aggregation, or post-translational modification to deterioration of cognitive function, researchers have been interested in analyzing serum and

plasma samples for key biomarkers. This is something that requires greater assay sensitivity than traditional immunoassay methods due to lower analyte expression levels relative to cerebrospinal fluid (CSF).

We are dedicated to addressing this growing need through the introduction of high-performance, rigorously verified neurology assays on the Single Molecule Counting (SMC™) ultrasensitive immunoassay platform. Our newest kits include assays for human Glial Fibrillary Acidic Protein (GFAP), Total Tau, and Neuronal Pentraxin 2 (NPTX2), proteins involved in Alzheimer's disease, Parkinson's disease, and Traumatic Brain Injury. Compatible with CSF, plasma, and serum samples, these assays enable researchers to confidently correlate the expression of analytes in circulation with those found in the central nervous system. The unprecedented sensitivity of SMC™ technology also enables scientists to thoroughly understand the kinetics of key proteins from health to different stages of neurodegeneration.

Explore more about neurology assays at SigmaAldrich.com/smc-neuro

Description	Cat. No.
SMC™ Human GFAP High Sensitivity Immunoassay Kit	03-0203-00
SMC™ Human Total Tau High Sensitivity Immunoassay Kit	03-0185-00
SMC™ Human NPTX2 High Sensitivity Immunoassay Kit	03-0199-00



SMC™ Immunoassay Kits

Analyte	LLOQ (pg/mL) ¹	Median Endogenous (pg/mL) ²	Species ³	Sample Type ⁴	Sample volume (µL)	Cat. No.
Phospho-α-Synuclein(Ser129)	0.1	P: 2.74; S: 1.81; C: 0.64	H	P, S, C	20, 20, 50	03-0188-00
Total-α-Synuclein	1.95	P: 1885; S: 1240; C: 233	H	P, S, C	0.5, 0.5, 10	03-0196-00
Amyloid beta 1-40	5.86	Normal CSF: 1366; P: 152	H, M, R	C, P	5, 25	03-0145-00
Amyloid beta 1-42	0.98	Normal CSF: 192; P: 15	H, M, R	C, P	5, 25	03-0146-00
BDNF	0.04	P: 783; S: 410; CSF: 0.13	H	C, P, S	100, 1, 1	03-0171-00
cTnI	0.69	P: 3.04; S: 3.02	H, Cy, R, C, GP	P, S	100	03-0154-00
GFAP NEW	0.12	P: 1.91; S: 1.93; C: 42.57	H	C, P, S	3.3, 100, 100	03-0203-00
Glucagon	0.78	44	H, M, R	P	10	03-0153-00
IFN-α2	0.031	P: 0.08; S: 0.08	H	P, S	100	03-0186-00
IFN-β1	0.15	P: 0.35; S: 0.64	H	P, S	50	03-0191-00
IFN-γ	0.03	P: 1.4; S: 1.4	H	P, S	25	03-0181-00
IgM ⁵ NEW	206.00	P: 0.64mg/mL, S: 0.79mg/mL	H	P, S	<1	03-0204-00
IL-1α2	0.12	P: 0.09; S: 0.10	H	P, S	100	03-0167-00
IL-1β	0.20	P: 0.11; S: 0.12	H	P, S	100	03-0160-00
IL-2 (new version)	0.09	0.21	H	P, S	100	03-0195-00
IL-22	0.10	P: 1.51; S: 1.52	H	P, S	25	03-0162-00
IL-23	0.10	P: 0.65; S: 0.46	H	P, S	100	03-0157-00
IL-4	0.04	P: 0.18; S: 0.18	H	P, S	100	03-0161-00
IL-5	0.04	P: 0.37; S: 0.30	H	P, S	100	03-0168-00
IL-6	0.08	P: 0.70; S: 0.69	H	P, S	75	03-0155-00
IL-10	0.10	P: 0.90; S: 0.89	H	P, S	100	03-0176-00
IL-12p70	0.05	P: 0.29; S: 0.28	H	P, S	100	03-0182-00
IL-13	0.04	P: 0.37; S: 0.33	H	P, S	100	03-0156-00
IL-17A/F Heterodimer	1.17	P: 1.36; S: 3.20	H	P, S	50	03-0177-00
IL-17A	0.07	P: 0.31; S: 0.30	H	P, S	50	03-0159-00
IL-17F	0.20	P: 1.10; S: 1.18	H	P, S	50	03-0164-00
IL-18	0.09	P: 138; S: 145	H	P, S	10	03-0190-00
MCP-1	0.15	P: 682; S: 1021	H	P, S	1.56	03-0187-00
NPTX2	0.58	P: 8268; S: 8161; C: 1677	H	P, S, C	0.1, 0.1, 0.3	03-0199-00
Phospho-Tau(Thr181)	0.94	P: 3.4; S: 2.0; C: 21	H	P, S, C	50, 100, 25	03-0184-00
Total Tau NEW	2.34	P: 27.1; S: 7.0; C: 88.91	H	P, S, C	50, 100, 25	03-0185-00
TNFα	0.20	P: 0.85; S: 0.78	H	P, S	100	03-0163-00
UCHL1	2.60	P: 22.06; S: 20.49; C: 413	H	P, S, C	25, 25, 5	03-0183-00
VEGF-A	0.20	P: 48; S: 50	H	P, S	25	03-0180-00
SARS-CoV-2 RBD IgG	NA ⁶	NA ⁶	H	P, S	2	03-0193-00
SARS-CoV-2 S1 IgA	NA ⁶	NA ⁶	H	P, S	2	03-0197-00

For Research Use Only. Not For Use In Diagnostic Procedures.

¹ LLOQ: Lowest point on standard curve with CV < 20% and accuracy within 20% of expected values

² Median Endogenous: Minimum of 10 samples from individual donors assessed for ability to quantify baseline biomarker values

³ Optimized for first species type listed. Other listed species have been tested, but not optimized for peak performance. Key: H=Human; M=Mouse; R=Rat; GP=Guinea Pig; Cy=Cynomolgus Monkey; C=Canine

⁴ Optimized for use in sample type(s) listed. Key: P=Plasma; S=Serum; L=Lysate; U=Urine; C=Cerebrospinal Fluid (CSF)

⁵ Plate-based assay

⁶ Qualitative assay

Aurora High-Performing Microplates for Use on the SMCxPRO™ System



Partnering with Aurora Microplates, Inc., we are the exclusive distributor of the High-Performance 384-Well Microplate-required for use on the SMCxPRO™ platform. Enhanced detection and stability of your biological materials are critical for generating consistent, high-quality data. Containing a flat-bottom design with a proprietary high transmittance window, these Aurora plates are optimized for imaging and designed to optimally perform on the SMCxPRO™ system. They are also available in two convenient package sizes.

Plates are now bar-coded to enable 100% traceability of each plate to all raw materials and 100% audit ability for ISO or other traceability requirements. The bar code label can also be used in automated systems for plate tracking, data management, and plate orientation.

Description	Cat. No.
384-well Bar-coded Aurora plate (Case of 32 plates)	ABB2-10160A
384-well Aurora plate (Case of 32 plates)	ABB2-00160A
One 384-well Aurora plate w/ 3 plate seals	02-1008-00



To learn how SMC™ technology can advance your drug discovery research, visit SigmaAldrich.com/smc-drugdev

Develop your own SMC™ Homebrew Assay with 1:1 Training and Customized Kits

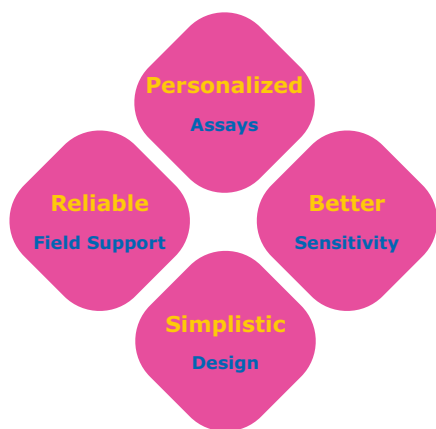
Take advantage of our ultrasensitive Single Molecule Counting (SMC™) technology while developing your own application-specific immunoassays in either bead- or plate-based format. Our assay development and optimization kits provide everything you need to build your own high performing SMC™ immunoassay for use with the SMCxPRO™ system. Use our platform to customize the assay required to accelerate your research. We offer hands-on assay development training for the SMC™ platform at your facility or one of our global training centers.



Utilize SMC™ Technology to Accelerate Your Immunogenicity Studies

Detecting negative immunogenic responses early in the drug discovery process is critical to ensure potential immune responses are identified promptly. Informed decisions can then be made as companies seek to develop effective medicines, with improved clinical efficacy and patient safety, to critical diseases. Assessing the immunogenicity of a compound occurs via the detection of anti-drug antibodies (ADA). FDA guidelines continue to stress the importance of high sensitivity as this leads to earlier detection of a primary immune response which is essential for patient safety.

Using SMC™ technology combined with our unique immunogenicity assay development kit, researchers can develop a homogenous species independent bridging assay that is simple, easy to design, and verify. The SMC™ Immunogenicity Bead-Based Assay Development Kit includes everything you need to develop and verify an ADA assay. The comprehensive assay development protocol is designed to guide and assist you with the process. Our experienced application scientists can also help design, verify, and also train end-users to fully utilize the platform.



Description	Cat. No.
SMC™ Bead-Based Assay Development Kit (5 plates)	03-0178-00
SMC™ Plate-Based Assay Development Kit (5 plates)	03-0179-00
SMC™ Assay Development Training – 3 days	96-2024-00
SMC™ Assay Development Training – extra day	96-2025-00
SMC™ Bead-Based Immunoassay Development Kit	03-0078-00
SMC™ Plate-Based Immunoassay Development Kit	03-0128-00
SMC™ Detection Labeling Kit	03-0076-02
SMC™ Capture Labeling Kit	03-0077-02
SMC™ Assay Buffer Optimization Kit	03-0122-00
SMC™ Immunogenicity Bead-Based Assay Development Kit	03-0175-00
384-Well Bar-Coded Aurora Plate (Case of 32 plates)	ABB2-10160A
384-Well Aurora Plate (Case of 32 plates)	ABB2-00160A
One 384-Well Aurora Plate w/ 3 Plate Seals	02-1008-00

Explore more at SigmaAldrich.com/smc-immunogenicity

Expert Custom Assays & Sample Testing (CAST) for SMC™ Technology

We understand you don't always have the time or resources to develop your own assay for your protein of interest or to test your critical samples. Our CAST team has over 130 years of combined immunoassay development experience with core expertise in SMC™ technology. Let us help you accelerate your program from discovery research into clinical trials with a custom designed program for you.

Our services include:

Collaborative Biomarker Discovery & Development

- Preclinical to early clinical sample testing
- Immunoassay development
- Biomarker verification to sponsor requirements

Biotherapeutic Development

- Pharmacokinetics
- Pharmacodynamics
- Immunogenicity

Reagent Selection

- Reagent sourcing
- Screening and selection
- Antibody derivatization
- QC generation

Sample Testing

- Prototype sample testing
- Proprietary kit sample testing
- SMC™ immunoassay kit testing

Utilize our SMCxPlore™ Services that include customized streamlined options to “explore” SMC™ technology with your analyte of interest or critical samples.

SMCxPlore™ Assay Development Feasibility:

Development of a prototype assay using your antibody pairs and standard for your own custom and proprietary SMC™ kits.

SMCxPlore™ Assay Conversion to SMC™ Assay:

With access to over 600 proven antibody pairs, let us develop a SMC™ assay that isn't currently available.

SMCxPlore™ Proof of Concept Sample Testing:

Sample testing of up to 30 of your critical samples using one of our highly verified SMC™ immunoassays.

The New Home of the SMC™ Custom Assay and Sample Testing (CAST) Team

We are proud to announce our new state-of-the-art facility at our St. Louis, Missouri headquarters for the Custom Assay and Sample Testing (CAST) team. While the laboratory is brand new, the team's commitment to providing excellent SMC™ custom assay services is stronger than ever. Whether you are seeking to outsource sample testing work for an analyte from our growing biomarker kit menu or need assistance developing a new assay for your exact research needs, we look forward to the opportunity to serve you. Please contact your local sales representative to learn how the CAST team can help accelerate your discovery.



SMCxPRO™ Immunoassay System and Services

The SMCxPRO™ immunoassay system is a compact affordable system for ultrasensitive biomarker detection. The instrument is designed to read 384-well plates to quantify protein in samples at concentrations three orders of magnitude greater than current technologies. The design has no fluidics making this a low maintenance affordable solution where ultra-high sensitivity is required.



SMCxPRO™ Platform & Ancillary Product Services	Cat. No.
SMCxPRO™ Complete System	95-0100-00
Standard SMCxPRO™ Installation	96-2011-00
SMCxPRO™ System Training – 1 day	96-2022-00
SMC™ Advanced Training – 3 days	96-2023-00
SMCxPRO™ IQ/OQ Installation	96-2012-00
SMCxPRO™ PQ Service	96-2013-00
BioTek® 405 Touch Microplate Washer with MAG plate	95-0004-05
Jitterbug™ Plate Shaker	70-0009-00

Software is 21CFR part II compliant and LIMS compatible

Network/PC Requirement

- Microsoft Windows® 7/10 Operating Systems
- A static IP address and an FTP server
- xPRO Operating and Analysis Software included (32- or 64-bit compliant)

Read Plate Format

- 384-well plate

Assay Format

- Bead-based assays
- Plate-based assays

Instrument Specifications

- Instrument dimensions: 406.4 mm H x 355.6 mm W x 444.5 mm D (16"H x 14"W x 17.5"D)
- Weight: 22.7 kg (50 lbs)
- US: 115 VAC, 50-60 Hz (Operating range 90-125 V)
- International: 230 VAC, 50-60 Hz (Operating range 180-250 V)

Installation and Training

- Set up of unit on bench and complete calibration of unit
- Run ASSIST program to verify instrument performance
- Optional IQ/OQ and PQ services available

Three Levels of Onsite Service Support for SMCxPRO™ Platform

- **Total Service:** Unlimited visits including labor, travel, expenses, and all parts for any service for one year
- **Advanced Service:** Labor, travel, and expenses for one preventative maintenance and one floating visit for one year
- **Essential Service:** Labor for one preventative maintenance visit for one year

Minimum Instrument Performance Specifications

Metric	Specification
Slope	>1.2 response/fM ¹
Background	<3 response/fM ¹
Limit of Detection (LOD)	<1 fM
Precision	<10% CV ²
Dynamic Range	>4 logs

¹ Determined from calibrator set: 0-300 fM of 150 kD antibody labeled with fluorophore

² Response measurements from 30 fM calibrator, n=20

Depot Repair Service Now Available

We now offer the option to ship your instrument to our depot center for service. This includes:

- Preventative maintenance and repair service
- Average turn-around of 5 days or less
- Daily international shipping

Ancillary Equipment to Optimize SMC™ Assays

BioTek® 405™ TSUVS Magnetic 96-Well Washer for SMC™ Assays



In partnership with BioTek® instruments, we offer the latest advancements in 96-well plate washing: a fully automated system designed to quickly wash an entire plate through biomagnetic separation, washing, and vacuum filtration. The system comes specifically optimized for use with SMC™ assays with the inclusion of a specially designed magnetic plate and customized pre-programmed plate washing protocols. The 405™ TSUVS model offers an easy-to-use and glove touchable screen.

Description	Cat. No.
BioTek® 405™ TSUVS Magnetic 96-Well Washer Complete with Touch Screen and Ultrasonic Cleaning for SMC™ Assays	95-0004-05

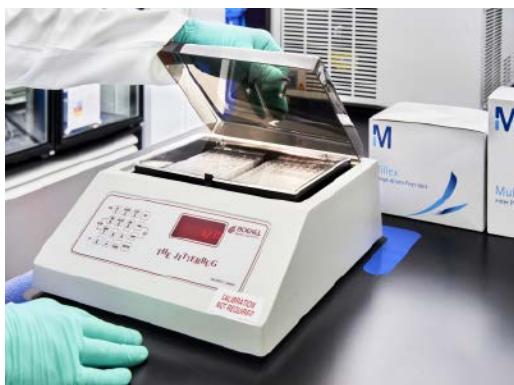
SMC™ Plate Washer Evaluation Kit



Evaluate the performance of your SMC™ plate washer using our SMC™ Plate Washer Evaluation Kit. This kit provides all required reagents to run 5 plates, mimicking steps in the SMC™ immunoassay with an abbreviated workflow. This allows you to assess the performance of your plate washer and run your assay with confidence.

Description	Cat. No.
SMC™ Plate Washer Evaluation Kit	03-0165-00

Boekel Scientific Jitterbug™, 130000, Heated Microplate Shaker (115V)



The microplate shaker is temperature controlled and ideal for immunoassays like SMC™ assays. It includes an inner lid to eliminate light and reduce the risk of contamination.

Description	Cat. No.
Boekel Scientific Jitterbug™ Heated Microplate Shaker (115V)	70-0009-00
Boekel Scientific Jitterbug™ Heated Microplate Shaker (230V)	70-0009-00A

Millipore® Brand ELISAs

Metabolic/Endocrine/Cytokine

Our menu of metabolic, endocrine, and cytokine ELISAs gives end-users a consistent and reliable method of investigating metabolic disease states or defining outcomes within toxicological studies during drug development.

Description	Species	Standard Curve Range	Sensitivity	Sample Volume	Cat. No.	Bulk Packaging Cat. No.*
Adiponectin	Human	1.56–200 ng/mL	0.2 ng/mL	10 µL	EZHADP-61K	EZHADP-61BK
Adiponectin (High Molecular Weight)	Human	1.5–200 ng/mL	0.5 ng/mL	10 µL	EZHMWAN-65K	
Adiponectin	Mouse	1–50 ng/mL	0.2 ng/mL	10 µL	EZMADP-60K	EZMADP-60BK
Adiponectin	Rat	3.125–200 ng/mL	0.4 ng/mL	10 µL	EZRADP-62K	
Amylin (active)	Human	1–100 pM	0.7 pM	50 µL	EZHA-52K	
C-Peptide	Human	0.2–20 ng/mL	0.05 ng/mL	10 µL	EZHCP-20K	EZHCP-20BK
C-Peptide	Canine	0.2–10 ng/mL	0.24 ng/mL	25 µL	EZCCP-47K	
C-Peptide 2	Mouse, Rat	25–1600 pM	15.0 pM	20 µL	EZRMCP2-21K	
C-Reactive Protein (CRP)	Human	0.12–10 ng/mL	0.2 ng/mL	2 µL	CYT298	
C-Reactive Protein (CRP)	Rat	4.9–10 ng/mL	2.5 ng/mL	2 µL	CYT294	
FGF-21	Human	31.25–2000 pg/mL	10.0 pg/mL	50 µL	EZHFGF21-19K	
FGF-21	Mouse, Rat	49.4–12,000 pg/mL	10.0 pg/mL	10 µL	EZRMFGF21-26K	
FGF-23	Human	9.9–2400 pg/mL	3.5 pg/mL	50 µL	EZHFGF23-32K	EZHFGF23-32BK
Ghrelin (active)	Human	25–2000 pg/mL	15.0 pg/mL	20 µL	EZGRA-88K	EZGRA-88BK
Ghrelin (active)	Mouse, Rat	25–2000 pg/mL	8.0 pg/mL	20 µL	EZRGRA-90K	
Ghrelin (total)	Human	100–5000 pg/mL	50.0 pg/mL	20 µL	EZGRT-89K	EZGRT-89BK
Ghrelin (total)	Mouse, Rat	0.1–10 ng/mL	0.04 ng/mL	20 µL	EZRGR-91K	
GIP (total)	Human	8.2–2000 pg/mL	4.2 pg/mL	20 µL	EZHGIP-54K	EZHGIP-54BK
GIP (total)	Mouse, Rat	8.2–2000 pg/mL	4.2 pg/mL	10 µL	EZRMGIP-55K	EZRMGIP-55BK
GLP-1 (active)	Multi-Species	2–100 pM	1.0 pM	100 µL	EGLP-35K	EGLP-35BK
GLP-1 High Sensitivity (active) Δ••	Multi-Species	See data sheet	0.14 pM	50 µL	EZGLPHS-35K	EZGLPHS-35BK
GLP-1 (total)	Multi-Species	4.1–1000 pM	1.0 pM	20–50 µL	EZGLP1T-36K	EZGLP1T-36BK
GLP-2	Multi-Species	1–64 ng/mL	0.3 ng/mL	50 µL	EZGLP2-37K	
Glucagon Δ	Human, Mouse, Rat	0.02–2 ng/mL	0.003 ng/mL	150–300 µL	EZGLU-30K	EZGLU-30BK
Growth Hormone (GH)	Mouse, Rat	0.7–50 ng/mL	0.07 ng/mL	10 µL	EZRMGH-45K	EZRMGH-45BK
IL-6 NEW	Human	1.17–150 pg/mL	1.17 pg/mL	50 µL	EZIL6-98K	EZIL6-98K10PK
IL-8 NEW	Human	0.82–200 pg/mL	0.8 pg/mL	50 µL	EZHIL8-100K	EZHIL8-100K10PK
Insulin	Human	2–200 µU/mL	1.0 µU/mL	20 µL	EZHI-14K	EZHI-14BK
Insulin	Mouse, Rat	0.2–10 ng/mL	0.1 ng/mL	10 µL	EZRMI-13K	EZRMI-13BK
Insulin (Animal serum free)	Human	2–200 µU/mL	0.85 µU/mL	20 µL	EZHIASF-14K	
Leptin	Canine	0.78–50 ng/mL	0.21 ng/mL	20 µL	EZCL-31K	
Leptin	Mouse	0.2–30 ng/mL	0.05 ng/mL	10 µL	EZML-82K	EZML-82BK
Leptin	Rat	0.2–30 ng/mL	0.08 ng/mL	10 µL	EZRL-83K	EZRL-83BK
Leptin “Dual Range”	Human	0.5–100 ng/mL	0.2 ng/mL	25 µL	EZHL-80SK	EZHL-80BK
MCP-1 NEW	Human	7.18–1000 pg/mL	7.18 pg/mL	10 µL (1:5 dilution)	EZMCP1-99KRM	EZMCP1-99K10PKRM
Procollagen Type IIA N-Propeptide (PIIANP)	Human	lot dependent	30.0 ng/mL	5 µL	EZPIIANP-53K	
Proinsulin (total)	Human	2–200 pM	0.5 pM	20 µL	EZHPI-15K	EZHPI-15BK
PYY (total)	Human	10–2000 pg/mL	6.5 pg/mL	20 µL	EZHPPYT66K	
Resistin	Human	0.16–5 ng/mL	0.02 ng/mL	20 µL	EZHR-95K	EZHR-95BK
SAA-3	Mouse	0.078–5 µg/mL	0.078 µg/mL	10 µL	EZMSAA3-12K	

* Bulk packaging available on select kits — more environmentally friendly and saves space (10 kit equivalent)

•• Preferred assay for measuring GLP-1 (active)

Δ Chemiluminescent assay

Millipore® Brand ELISAs & RIAs

Neuroscience ELISAs

Get a complete picture of the complexities associated with normal and disease states of the nervous system with reliable quantification of biomarkers using our neuropeptide and neurodegenerative ELISAs.

Description	Species	Standard Curve Range	Sensitivity	Sample Volume	Cat. No.
Amyloid beta 1-40	Human	16–500 pg/mL	4 pg/mL	50 µL	EZHS40
Amyloid beta 1-42	Human	16–500 pg/mL	5 pg/mL	50 µL	EZHS42
Amyloid beta, Set	Human	Contains 1 each of EZHS40 and EZHS42			EZHS-SET
Amyloid beta (Brain) 1-40	Human	16–500 pg/mL	4 pg/mL	50 µL	EZBRAIN40
Amyloid beta (Brain) 1-42	Human	16–500 pg/mL	5 pg/mL	50 µL	EZBRAIN42
Amyloid beta (Brain), Set	Human	Contains 1 each of EZBRAIN40 and EZBRAIN42			EZBRAIN-SET
BDNF (Brain-Derived Neurotrophic Factor)	Human, Rat	7.8–500 pg/mL	7.8 pg/mL	50 µL	CYT306
GFAP (Glial Fibrillary Acidic Protein)	Human, Mouse, Rat	1.5–100 ng/mL	1.5 ng/mL	100 µL	NS830
NPY (Neuropeptide Y)	Human	5–1000 pg/mL	2 pg/mL	50 µL	EZHNPY-25K
NPY (Neuropeptide Y)	Mouse, Rat	0.01–2 ng/mL	0.004 ng/mL	20 µL	EZRMNPY-27K
PEDF (Pigment Epithelium-Derived Factor)	Human	0.9–62.5 ng/mL	0.9 ng/mL	50 µL	CYT420
Phosphorylated Neurofilament, (pNF-H) Sandwich	Multi-Species	0.0293–15 ng/mL	0.0585 ng/mL	1–10 µL	NS170
S100B	Human	2.7–2000 pg/mL	1.3 pg/mL	50 µL	EZHS100B-33K

Radioimmunoassays (RIAs)

RIAs have long been considered a valuable, economical, and accurate way to measure protein concentration. As many researchers move away from using radioactive material, please consider using our other high-quality immunoassays for your research needs.

Description	Species	Standard Curve Range	Sensitivity	Sample Volume	Cat. No.
Adiponectin	Human	lot dependent	1 ng/mL	5 µL	HADP-61HK
C-Peptide	Canine	0.156–20 ng/mL	0.15 ng/mL	50 µL	CCP-24HK
C-Peptide	Human	0.1–5 ng/mL	0.1 ng/mL	50 µL	HCP-20K
Ghrelin (active)	Human	lot dependent	7.8 pg/mL	50 µL	GHRA-88HK
Ghrelin (total)	Human	lot dependent	93 pg/mL	50 µL	GHRT-89HK
GLP-1 (active)	Multi-Species	10–500 pM	3 pM	300 µL	GLP1A-35HK
GLP-1 (total)	Multi-Species	10–1000 pM	3 pM	300 µL	GLP1T-36HK
Glucagon	Multi-Species	20–400 pg/mL	20 pg/mL	50 µL	GL-32K
Insulin	Porcine	2–200 µU/mL	2 µU/mL	50 µL	PI-12K
Insulin	Rat	0.1–10 ng/mL	0.1 ng/mL	50 µL	RI-13K
Insulin LisPro	Multi-Species	2.5–250 µU/mL	2.5 µU/mL	100 µL	LPI-16K
Insulin (sensitive)	Rat	0.02–1 ng/mL	0.02 ng/mL	50 µL	SRI-13K
Insulin Specific	Human	2–200 µU/mL	2 µU/mL	50 µL	HI-14K
Leptin	Human	0.5–100 ng/mL	0.5 ng/mL	50–100 µL	HL-81K
Leptin	Multi-Species	1–50 ng/mL	1 ng/mL	50 µL	XL-85K
Proinsulin	Human	2–100 pM	2 pM	100–200 µL	HPI-15K
PYY (3-36)	Human	lot dependent	20 pg/mL	<100 µL	PYY-67HK
PYY (total)	Human	lot dependent	10 pg/mL	<100 µL	PYYT-66HK

Sigma-Aldrich® Brand ELISAs

We offer a portfolio of > 1,800 ELISAs and EIAs, covering a diverse range of species and sample types. A variety of research areas are addressed, from inflammation and cardiovascular disease to metabolic and veterinary research.

ELISA Designations

- Sandwich ELISA
 - Standard off-the-shelf assay
 - Some may be designated "lysate" to accommodate the change from serum, plasma, or supernatant
- Custom Sandwich ELISA
 - Requires custom manufacture and validation
 - Upcharge may apply
- EIA
 - Competitive ELISA
- Cell-Based Phosphorylation ELISA
 - For use on cell lysates to detect phosphorylation events

	Cytokines	Metabolic	Cardiovascular	Angiogenesis	Signaling
	✓	✓	✓	✓	✓
	✓	✓	✓	✓	✓
	✓	✓		✓	✓
	✓				
	✓	✓			
	✓				
	✓				
	✓				
	✓				
	✓	✓			

Conferma™ ELISAs: Engineering Reproducibility

Conferma™ ELISAs are developed to increase the reproducibility of immunoassays through detailed analysis of their critical reagents lot to lot. Using physiochemical evaluation techniques each component is confirmed against previous lots prior to manufacturing.

Evaluation Techniques

- **1D Gel Analysis:** Confirms the size and purity of the reagents.
- **Amino Acid Analysis (AAA):** Determines protein concentration.
- **Liquid Chromatography–Mass Spectrometry (LC-MS/MS):** Provides protein sequence coverage (standard curve recombinant proteins (rProteins)).
- **Reverse Phase – LC-MS (RP-LC-UV-MS):** Gives measured mass of proteins (for monoclonal antibodies (mAbs) and rProteins, with and without biotinylation).
- **Surface Plasmon Resonance (SPR):** Shows binding affinity of mAbs and the rProtein used in the standard curve.

Details of this process can be found in a granular verification report for each assay available online. For instance, the evaluation of the Conferma™ IL-6 ELISA demonstrated:

- The standard curve material matched the reported sequence for Human IL-6 from the Universal Protein Resource (UniProt) accession # P05231 AA30-212.

Sequence Coverage for Calibrator Lot 028M4878V
 VPPGEDSKDVAAPHRQPLTSSERIDKQIRYILDGIALRKETCNKSNMCESS
 KEALAENLNLPKMAEKDGCFCQSGFNEETCLVKIITGLLEFEVYLEYLQNRFE
 SSEEQARAVQMSTKVLIQFLQKKAKNLDAITTPDPTTNASLLTKLQAQNWQL
 QDMTTHLILRSFKFLQSSLRALRQM

Sequence Coverage for Calibrator Lot 015M4836V
 VPPGEDSKDVAAPHRQPLTSSERIDKQIRYILDGIALRKETCNKSNMCESS
 KEALAENLNLPKMAEKDGCFCQSGFNEETCLVKIITGLLEFEVYLEYLQNRFE
 SSEEQARAVQMSTKVLIQFLQKKAKNLDAITTPDPTTNASLLTKLQAQNWQL
 QDMTTHLILRSFKFLQSSLRALRQM

- The measured mass of each reagent lot was extremely similar.

Sample	Measured masses (Da)	Moles of Biotin/ moles of antibody
Lot 028M4878V	20977	NA
Lot 015M4836V	20977	NA
IL6.2F2 (Lot RB1811028)	148728	NA
IL6.2F2 (Lot RB1812003)	148735	NA
IL6.2F2 (Lot RB1912001)	148728	NA
IL6.2E3 (Lot RB1811029)	148937	NA
IL6.2E3 (Lot RB1812002)	148934	NA
IL6.2E3 (Lot RB1912002)	148933	NA
IL6.2E3 Bt (Lot RB1811029)	Distribution with Bt=4 at 150744	3
IL6.2E3 Bt (Lot RB1812002)	Distribution with Bt=4 at 150744	4
IL6.2E3 Bt (Lot RB1912002)	Distribution with Bt=4 at 150748	8

*Bt = biotin; Da = Dalton; MS = mass spectrometry

- Each mAb lot had a high affinity and activity against the standard curve rProtein.

No.	Ligand (Antibody)	IL-6 Calibrator	KD (nM)	% Activity
1	17M4830V-control	028M4878V	0.04	85
2	IL6.2F2 Capture RB1811028	015M4836V	0.13	86
3	IL6.2F2 Capture RB1811028	028M4878V	0.05	84
4	IL6.2F2 Capture RB1812003	015M4836V	0.14	88
5	IL6.2F2 Capture RB1812003	028M4878V	0.06	88
6	IL6.2F2 Capture RB1912001	028M4878V	0.05	93

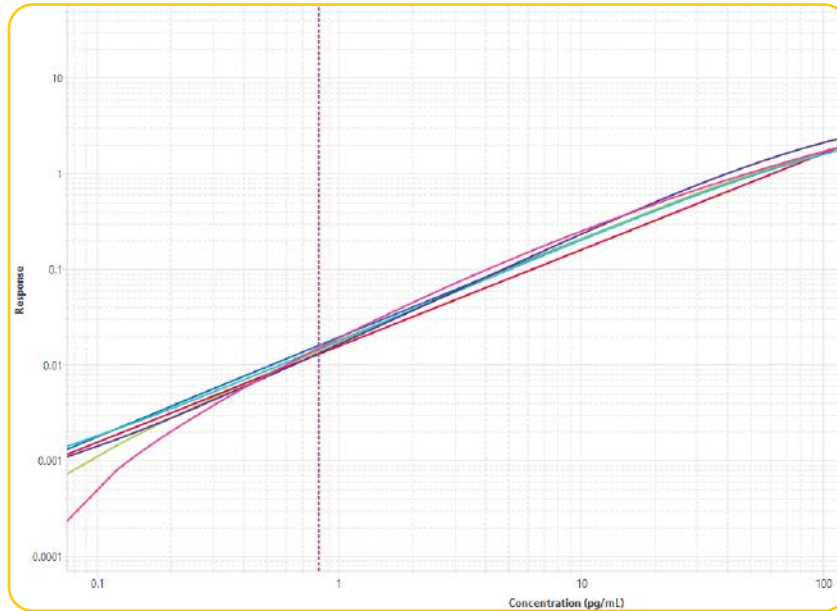
Finished Assay Testing

Three separately manufactured lots of assays were evaluated by collaborators in a blind study to evaluate the reproducibility of the assays in an independent laboratory with two scientists running the assays. This allows us to evaluate the performance similarity, lot to lot, with multiple users and when possible, multiple laboratories.

Example of Conferma™ ELISAs run in an independent laboratory (2 scientists using 2 plates from 3 lots of assays)

Using the Belysa® Immunoassay Curve Fitting Software (Cat. No. 40-122) curves were compared for parameters such as recovery, LLOQ, and parallelism across ELISAs from the same lot, across multiple lots, and across multiple users to confirm reproducibility.

Slope Parallelism Displayed Using Belysa® Immunoassay Curve Fitting Software



Slope Ratios Calculated with Belysa® Immunoassay Curve Fitting Software

Plate	Parallelism	LLOQ (pg/mL)	LOD (pg/mL)
Plate 2	1.009	0.82	0.23
Plate 3	0.987	0.82	0.10
Plate 4	0.989	0.82	0.09
Plate 5	0.989	0.82	0.08
Plate 6	1.012	0.82	0.20
Reference Plate 1		0.82	0.17

Reproducibility

Current testing demonstrates that confirming the performance of critical reagents enhances the reproducibility of ELISAs in the hands of independent laboratories. On average, labs have achieved LLOQs at the lowest point on the standard curve and slope ratios of 1 +/- 0.1 indicating excellent similarity, between plates, lots, and users.

Conferma™ ELISAs

Product Name	Cat. No.
Human IL-6 Conferma™ ELISA	EZIL6-98K
Human IL-8 Conferma™ ELISA	EZHIL8-100K
Human MCP-1 Conferma™ ELISA	EZMCP1-99KRM

Discover more at SigmaAldrich.com/conferma

ELISA Reading and Washing Equipment in Partnership with BioTek® Instruments

Supporting our collection of over 1,800 ELISA products, we are pleased to introduce the BioTek® 800 TS Absorbance Reader and 50 TS Plate Washer which together provide a cost-effective addition to your ELISA work flow.

BioTek® 800 TS Absorbance Reader

For Millipore® and Sigma-Aldrich® ELISAs



- Precise, accurate, and versatile, used for many applications, including ELISA, protein and other end-point assays, plus kinetics and cell-based assays
- Software options: Basic, Gen 5, and Gen 5 Secure
- Flexible filter options; 450 nm, 590 nm, 630 nm, and 750 nm as standard
- Optional absorbance test NIST traceable plate
- Color touchscreen for quick programming and simple operation
- USB flash drive for convenient data export
- Durable and high-quality design

Description	Cat. No.
BioTek® 800 TS Absorbance Reader, Gen 5 Software	40-006
BioTek® 800 TS Absorbance Reader, Gen 5 Secure	40-007

BioTek® 50 TS Plate Washer

BioTek® 50 TS Magnetic 96-Well Automated Strip Washer



- Color touchscreen makes programming quick and easy
- Easy touch operation for washing full or partial plates
- Reliable and safe: liquid level sensing
- Automated switching of up to 3 buffers for even greater automation
- Automated, built-in maintenance routines for continued reliable operation
- Replaces the BioTek® ELx50 Magnetic 96-Well Strip Washer

Description	Cat. No.
BioTek® 50 TS Plate Washer	40-301

MILLIPLEX® New Product Spotlight

Introducing the largest bead-based non-human primate multiplex assay on the market



Save time and sample volume with the new MILLIPLEX® Non-Human Primate Cytokine/Chemokine/Growth Factor Panel A by measuring 48 individual immune markers in a small volume of serum, plasma, or cell culture supernatants. Built with flexibility in mind, you can choose any combination of analytes or select a 48-plex or 38-plex premix panel. See **page 30** for the full list of analytes.

Benefits of MILLIPLEX® Non-Human Primate Panel A:

- **Flexible:** Choose any combination of analytes, customize your premix, or select a 38-plex or 48-plex premixed kit
- **Verified:** Fully verified in serum and plasma for rhesus macaques and cynomolgus macaques, with additional testing in other non-human primate species
- **User-Friendly:** Reduce variability with ready-to-use reagents and a straightforward protocol
- **Streamlined:** No need to mix and dilute multiple reagents prior to assay set-up

Discover more at SigmaAldrich.com/milliplex-primate

xMAP® INTELLIFLEX System: Next Generation Multiplexing Platform

The Luminex® xMAP® INTELLIFLEX system is a compact, flow-based, multiplex platform that simplifies your workflow by combining the reliable performance of xMAP® technology with advanced features to elevate your assay performance and empower assay development innovation.

Features of the xMAP® INTELLIFLEX System:

- **Wide Dynamic Range:** Avoid repeat testing due to out-of-range values with the widest dynamic range of any xMAP® platform
- **Compact Footprint:** Reduce lab bench requirements with a compact footprint that features an embedded PC and a touchscreen user interface
- **User-Friendly and Flexible Software:** Easy-to-use software allows you to optimize workflows, gather performance insights, and export data for analysis
- **Compatible with Existing MILLIPLEX® Assays:** All existing MILLIPLEX® assays are compatible with the new xMAP® INTELLIFLEX systems
- **Dual Reporter Functionality:** Now get more data from each target with the new second reporter channel that allows you to save on time and precious sample volume

Explore more at SigmaAldrich.com/intelliflex



MILLIPLEX® Analyte Species Index

Analyte	Species	Analyte	Species	Analyte	Species
4-6		B7-H6	H	Collagen IV – COMP (cartilage oligomeric matrix protein)	H
4-1BBL/TNFSF9	H,M	BAD (total)	H	C1q (autoantibody)	H
4E-BP1 (total)	H,M,R	BAD (Ser112)	H,M	Complement C1q	H
4E-BP1 (Thr37/46)	H,M,R	BAFF/Blys	H	Complement C2	H
5'-NT/CD73	H,M,R	BAFF/Blys (autoantibody)	H	Complement C3	H
6Ckine/CCL21/Exodus-2	H,M	BAX (total)	H	Complement C3b/iC3b	H
A		BCA-1/CXCL13	H,M,NHP	Complement C4	H
α-1-Acid Glycoprotein (AGP)	H,M,R	Bcl-2 (total)	H	Complement C4b	H
α-1-Antitrypsin (A1AT)	H	Bcl-2 (Ser70)	H	Complement C5	H
α-1 Microglobulin	H	Bcl-xL (total)	H	Complement C5a	H
α-2 Macroglobulin (A2M)	H,M,R	Bcl-xL/BAD (interaction)	H	Complement Factor B	H
α-Fetoprotein (AFP)	H	BDNF	H,M,R	Complement Factor H	H
α-MSH	H,M,R	Betacellulin	M	Complement Factor I	H
α-Synuclein	H	BIM	H	Connective Tissue Growth Factor (CTGF)	R
ACTH	C,H,M,NHP,R	Blk (Tyr389)	H	Contactin-1	H
Active Caspase 8 (total)	H	BMP-9	H	Corticosterone	R
Active Caspase 9 (total)	H	BNP	H	Cortisol	H,Mul
ADAMTS13	H	BRAF (Ser446)	H,M,R	CRAF (Ser338)	H,M,R
Adiponectin	H,M,R	BRAK/CXCL14	H	Creatine Kinase Muscle (CKM)	R
Adipsin/Factor D	H,M	BTLA	H,M	CREB (Ser133)	H,M,R
Agouti-Related Protein (AgRP)	H,NHP	C		CREB (total)	H,M,R
ALK-1 (soluble)	M	c-Jun (Ser73)	H,M,R	CTACK/CCL27	H,M
Akt/PKB (Ser473)	H,M,R	c-Kit (panTyr)	H	CTAG1B/NY-ESO-1 (autoantibody)	H
Akt/PKB (total)	H,M,R	c-Kit/SCFR (soluble)	H	CTLA-4/CD152	H,M
Akt1 (Ser473)	H,M,R	c-Met/HGFR (panTyr)	H	CXCL6/GCP-2	H
Akt1 (total)	H,M,R	c-Myc (total)	H	CXCL16	H,M
Akt2 (Ser474)	H,M,R	C-Peptide	H,NHP	CYFRA21-1	H
Akt2 (total)	H,M,R	C-Peptide 2	M,R	Cystatin C	C,H,M,R
Akt3 (Ser472)	H,M,R	C-Reactive Protein (CRP)	H,M		
Akt3 (total)	H,M,R	CA125	H	D	
Albumin	C,H,R	CA15-3	H	D-dimer	H
ALDH1A1	H	CA19-9	H	DKK1	H,M,R
Amphiregulin	M	Calbindin	H	DPP4	H
Amylin (active)	H,M,NHP,R	Carbonic Anhydrase 9 (CA9)	H		
Amylin (total)	C,H	Cardiac Troponin I (cTnI)	R	E	
Amyloid beta 1-40 (Aβ 1-40)	H,M	Cardiac Troponin T (cTnT)	R	E-Cadherin	H,M
Amyloid beta 1-42 (Aβ 1-42)	H,M	Cathepsin D	H	EGF	H,M,R
Angiogenin (ANG)	H	Caveolin-1 (CAV-1)	R	EGFR/HER1/ErbB1 (soluble)	H
Angiopoietin-2	H,M	CCL28	H	EGFR2/Her2/ErbB2 (soluble)	H
Angiostatin/Kringle	H	CCNB1/Cyclin B1 (autoantibody)	H	EGFR3/Her3/ErbB3 (soluble)	H
Angiotensinogen (AGT)	H	CD3ε (panTyr)	H	eIF-4B (Ser422)	H,M,R
ANGPTL3	H	CD14 (soluble)	H	eIF-4E (Ser209)	H,M,R
ANGPTL4	H	CD25/IL-2Ra	H,M	eIF-4G (Ser1108)	H,M,R
ANGPTL6/AGF	H	CD27	H,M	eIF2a (Ser51)	H,M,R
Antithrombin III	H	CD28	H	ENA-78/CXCL5	H
Apelin	H	CD30 (soluble)	H,M	Endocan-1 (ESM-1)	H,M
Apolipoprotein AI (Apo AI)	H	CD30/TNFRSF8	H	Endoglin	H,M
Apolipoprotein AII (Apo AII)	H	CD31/PECAM-1 (soluble)	H,M	Endostatin	H
Apolipoprotein B (Apo B)	H	CD40	H,M	Endothelin-1	H,M
Apolipoprotein CII (Apo CII)	H	CD40L (soluble)	H,M,NHP	ENO1 (autoantibody)	H
Apolipoprotein CIII (Apo CIII)	H	CD44	H	Eotaxin/CCL11	E,H,M,NHP,R
Apolipoprotein E (Apo E)	H	CD80/B7-1	H,M	Eotaxin-2/CCL24/MPIF-2	H
ApoE4	H	CD86/B7-2	H	Eotaxin-3/CCL26	H
APRIL	H	CD137/4-1BB/TNFRSF9 (soluble)	H,M,NHP	EpCAM	H
Arginase-1 (ARG1)	H,R	CD226/DNAM-1	H,M	Erythropoietin (EPO)	H,M,R
ATF2 (Thr71)	H,M	CEA	H	ErbB1/EGFR (panTyr)	H
ATR (total)	H	CENP-A (Centromere Protein A) (autoantibody)	H	ErbB2/HER2 (panTyr)	H
AXL (soluble)	H	CENP-B (Centromere Protein B) (autoantibody)	H	ErbB3/HER3 (panTyr)	H
B		Chk1 (Ser345)	H,M,R	ErbB4/HER4 (panTyr)	H
β-2-Microglobulin	C,H,M,R	Chk2 (Thr68)	H	Erk/MAPK 1/2 (Thr185/Tyr187)	H,M,R
β-Endorphin	H,M,R	CK-MB	H	Erk/MAPK 1/2 (total)	H,M,R
β-2-Glycoprotein (autoantibody)	H	Clusterin	C,H,M,R	E-Selectin (soluble)	H,M,R
β-Tubulin (total)	H,M,R	CNTF	H,NHP	Estradiol	Mul
B7-H2/ICOSL	H,M	Collagen IV	H	Extracellular Matrix Protein 1 (ECM1)	H
B7-H3/CD276	H,M				
B7-H4/VTCN1	H				
B7-H5/VISTA	H				

MILLIPLEX® Analyte Species Index (continued)

Analyte	Species	Analyte	Species	Analyte	Species
F		Hck (Tyr411).....	H,M	IL-9	H,M
FABP1.....	H	HE4	H	IL-10.....	B,C,E,G,H,M,NHP,O,Por,R
FABP3.....	H,R	Hepsin	H	IL-10 (autoantibody)	H
FABP4.....	H	HER2/ErbB2 (autoantibody)	H	IL-11.....	H,M
FADD (Ser194).....	H	HGF.....	H,M	IL-12.....	Por
Fas Ligand (sFasL) (soluble)	H,M,NHP	HGFR/c-Met (soluble)	H	IL-12 (p40)	F,H,M
Fas/TNFRSF6 (soluble)	F,H,M	HIF-1α (autoantibody).....	H	IL-12 (p40) (autoantibody)	H
Ferritin	H	HMGB1	H	IL-12 (p70)	E,H,M,NHP,R
Fetuin A.....	H	HSP27 (Ser78)	H	IL-12/23 (p40)	NHP
FGF-1/FGF-acidic	H	HSP60 (autoantibody)	H	IL-13.....	E,F,H,M,HNP,R
FGF-2/FGF-basic.....	E,H,M,NHP	HSP70	H	IL-14/α -Taxilin.....	H
FGF-19.....	H	Human Serum Albumin (HSA).....	H	IL-15.....	C,H,M,NHP,R
FGF-21.....	H,M,R	HVEM	H,M	IL-15 (autoantibody)	H
FGF-23	H,M,R	I		IL-16.....	G,H,M,NHP
FGFR1 (panTyr).....	H	I-309/CCL1	H	IL-17A/CTLA8	B,E,H,M,NHP,O,R
FGL1/Hepassocin	H	ICAM-1 (soluble)	H,M,R	IL-17A/CTLA8 (autoantibody).....	H
Fgr (Tyr412)	H,R	ICOS	H	IL-17A/F.....	M
Fibrinogen.....	H	IDO1	H	IL-17E/IL-25	H,M,NHP
Fibroblast Activation Protein (FAP).....	H	IFNα2	G,H,NHP	IL-17F	H,M
Flt3 Ligand.....	F,H	IFNβ (panTyr)	H	IL-17F (autoantibody)	H
Flt3 (panTyr)	H	IFNβ (autoantibody)	H	IL-18.....	C,E,F,H,NHP,Por,R
Follistatin (FST)	H,M	IFNβ1	M	IL-18BPa	H
Follistatin-like Protein 1 (FSTL1)	H,M,R	IFNγ	B,C,E,F,G,H,M,NHP,O,Por,R	IL-19.....	H
Fractalkine/CX3CL1.....	E,H,NHP,R	IFNγ (autoantibody)	H	IL-20	H,M
FSH.....	C,H,M,NHP,R	IgA.....	H,M	IL-21	G,H,NHP
Fyn (Tyr420).....	H,M,R	IgE.....	H,M	IL-22	H,M,NHP
G		IGF-1.....	H	IL-22 (autoantibody).....	H
Galectin-1	H,M	IGF-2.....	H	IL-23	H,M,NHP
Galectin-1 (GAL1) (autoantibody).....	H	IGF1R (total)	H,M,R	IL-24	H
Galectin-3	H,M	IGF1R (panTyr)	H	IL-27	H,M
Galectin-3 (GAL3) (autoantibody).....	H	IGF1R (Tyr1135/1136)	H,M	IL-28A/IFNλ2.....	H,NHP
GAPDH (total).....	H	IGFBP1	H	IL-28B/IFNλ3.....	H,M
G-CSF.....	E,H,M,NHP,R	IGFBP2	H	IL-29/IFNλ1	H
G-CSF (autoantibody).....	H	IGFBP2/IMP2 (autoantibody)	H	IL-31	H,M,NHP
GDF-11	H	IGFBP3	H	IL-32a.....	H
GDF15	H	IGFBP3	H	IL-33/NF-HEV (mature)	H,M,NHP
GDNF.....	H	IGF2BP3/IMP3 (autoantibody)	H	IL-34	H
GH	C,H,M,NHP,R	IGFBP4	H	IL-35	H
Ghrelin (active).....	C,H,M,NHP,R	IGFBP5	H	IL-36β/IL-1F8.....	H
GIP (total).....	C,H,M,NHP,R	IGFBP6	H	IL-36Ra/IL-1F5.....	B,O
GITR	H,M	IGFBP7	H	IL-37/IL-1F7.....	H
GITRL.....	H	IgG1.....	H,M	IL-38/IL-1F10.....	H
Glial Fibrillary Acidic Protein (GFAP)	H	IgG2.....	H	Insulin	C,H,M,NHP,R
GLP-1 (active).....	C,H,M,NHP,R	IgG2a	M	Involucrin	H
GLP-1 (total)	H,M	IgG2b	M	IP-10/CXCL10	B,C,E,H,M,NHP,O,R
Glucagon	C,H,M,NHP,R	IgG3.....	H,M	IR (total).....	H,R
GM-CSF	C,E,F,H,M,NHP,Por,R	IgG4.....	H	IR (panTyr).....	H
GnRH.....	H,M	IgM	H,M	IR (Tyr1162/1163).....	H
GOT1.....	R	IkBa (Ser32).....	H	Irisin	H,M,R
GP130 (soluble)	H,M	IKKα/β (Ser177/181).....	H	IRS1 (Ser636)	H,M,R
Granulysin	H	IL-1α.....	B,E,H,M,NHP,O,Por,R	IRS1 (total).....	H,M,R
Granzyme A	H,NHP	IL-1α (autoantibody)	H	I-TAC/CXCL11	H,NHP
Granzyme B	H,M,NHP	IL-1β.....	B,E,F,H,M,NHP,O,Por,R	J	
GROα	E,H	IL-1RI (soluble)	H,M	Jag1	H,M
KC/GRO/CINC-1/CXCL1	R	IL-1RII (soluble).....	H,M	JNK/SAPK1 (Thr183/Tyr185)	H,M,R
GSK3α (total)	H,M,R	IL-1Ra	H,NHP,Por	JNK/SAPK1 (total).....	H,M,R
GSK3α (Ser21).....	H,M,R	IL-2	C,E,F,G,H,M,NHP,Por,R	Jo-1 (autoantibody)	H
GSK3β (total)	H,M,R	IL-2Ra (soluble)	H,M	K	
GSK3β (Ser9)	H,M,R	IL-3	H,M	Kallikrein-6	H
GSTa.....	H,R	IL-4	B,E,F,H,M,NHP,O,Por,R	KC-like Protein.....	C
H		IL-4R (soluble)	H,M	KC/GRO/CINC-1/CXCL1	F,M
H2A.X (Ser139).....	H,M,R	IL-5	E,H,M,NHP,R	Keratin-1, 10	H
Haptoglobin.....	H,M,R	IL-6	B,C,E,F,G,H,M,NHP,O,Por,R	Keratin-6	H
HB-EGF.....	H	IL-6 (autoantibody)	H	KIM-1	C,H,M,R
HCC-1/CCL14	H	IL-6R (soluble)	H,M	Ku (autoantibody)	H
HCC-4/CCL16	H	IL-6Ra (soluble)	H		
HCGβ.....	H	IL-7	C,H,M,NHP		
		IL-8/CXCL8	B,C,E,F,H,NHP,O,Por		
		IL-8/CXCL8 (autoantibody)	H		

MILLIPLEX® Analyte Species Index (continued)

Analyte	Species	Analyte	Species	Analyte	Species
L		N		ProMMP-9	M
Lactotransferrin (LTF)	H	NAP-2/CXCL7	H	Proteinase 3 (autoantibody)	H
LAG-3	H,M	NCAM (soluble)	H	PSA (free)	H
LAT (panTyr)	H	NCAM1/L1CAM/CD171	H	PSA (total)	H
Lck (panTyr)	H,M,R	Nectin-2	H	P-Selectin (soluble)	H,M
Lck (Tyr394)	H,M,R	Nectin-4	H	PTEN (total)	H,M,R
Leptin	C,H,M,NHP,R	Neurogranin (NRGN)	H	PTEN (Ser380)	H,M,R
Leucine-rich alpha-2-glycoprotein 1 (LRG1)	H	Neuron-specific Enolase (NSE)	H	PTH	H,R
Leukemia Inhibitory Factor (LIF)	H,M,R	Neuropilin-1 (soluble)	H	PVR/CD155	H
LH	C,H,M,NHP,R	Neurotensin	H,M,R	PYY (total)	C,H,M,NHP,R
LIGHT	H,M	Neutrophil Elastase-2 (ELA2)	H		
LIX/CXCL6/GCP-2	H,M,R	NFκB (total)	H,M,R	R	
L-Selectin (soluble)	H	NFκB (Ser536)	H,M,R	RAGE (soluble)	H,M
Lymphotactin/XCL1	H	NGAL/Lipocalin-2	C,H,M,R	RANKL	H
Lyn (Tyr397)	H,R	NGF	H	RANTES/CCL5	E,F,G,H,M,HNP,R
		Notch1	M	Ras (total)	H
M		NOXA/Mcl-1 (interaction)	H	RasG12D (total)	H
Mannose-Binding Lectin (MBL)	H	NT-proBNP	H	RasG12V (total)	H
MCAM/MUC18/sCD146	H			RBP4	C,H
Mcl-1/BIM (interaction)	H	O		Renin	H,M
Mcl-1 (total)	H	Oncostatin-M (OSM)	H,M	Resistin	H,M
MCP-1/CCL2	B,C,E,F,H,M,NHP,R	Osteoactivin	H	Ribosomal P (autoantibody)	H
MCP-2/CCL8	H	Osteocalcin (OC)	H	RNP (Ribonucleoprotein)	H
MCP-3/CCL7	H	Osteocrin (OSTN)/Musclin	M,R	(autoantibody)	H
MCP-4/CCL13	H	Osteonectin/SPARC	H,M,R	RNP/Smith (RNP/Sm) (autoantibody)	H
MCP-5/CCL12	M	Osteopontin (OPN)	C,H,M,R	RPS6 (Ser235/Ser236)	H,M,R
M-CSF	G,H,M	Osteoprotegerin (OPG)	H,M,R	RPS6 (total)	H,M,R
M-CSFR (panTyr)	H	OX40/CD134	H		
MDC/CCL22	H,M	Oxytocin	H,M,R	S	
MDH1	H			S100B	H
MDM2 (total)	H,M,R	P		SARS-CoV-2 N	H
MEK1 (Ser222)	H,M,R	P16-INK4a (autoantibody)	H	SARS-CoV-2 RBD	H
Melanoma Inhibitory Activity Protein (MIA)	H	p21 (total)	H	SARS-CoV-2 Spike S1	H
Melatonin	H,R	p38/SAPK2A/B (Thr180/Tyr182)	H,M,R	SARS-CoV-2 Spike S2	H
Mesothelin	H	p38/SAPK2A/B (total)	H,M,R	SCF	F,H
Mi-2 (autoantibody)	H	p53 (autoantibody)	H	Scl-70 (autoantibody)	H
MICA	H	p53 (Ser15)	H	Sclerostin (SOST)	H,M,R
MICB	H	p53 (Ser46)	H	SDF-1/CXCL12	F,H,M
Midkine	H	p70S6 Kinase (total)	H,M,R	SDH	H,R
MIF	H	p70S6 Kinase (Thr389/412)	H,M,R	Secretin	H,M
MIG/CXCL9	H,M,NHP	PAI-1 (total)	H,M,R	Serum Amyloid A (SAA)	H
MIP-1α/CCL3	B,H,M,NHP,O,R	Pancreatic Polypeptide (PP)	H	Serum Amyloid P (SAP)	H,M
MIP-1β/CCL4	B,G,H,M,NHP,O			Sex Hormone Binding Globulin (SHBG)	H
MIP-1δ/MIP-5/CCL15	H	PARK5/UCHL1	H	Siglec-7	H
MIP-2/CXCL2	M,R	PARK7/DJ1 (Parkinson's Disease Protein 7)	H	Siglec-9	H
MIP-3α/CCL20	G,H,M,NHP	PCNA (Proliferating Cell Nuclear Antigen A) (autoantibody)	H	Sm (autoantibody)	H
MIP-3β/CCL19	H,M	PD-1	H,M	SMAD2 (Ser465/467)	H,M,R
MIP-4/PARC/CCL18	H	PDGF-AA	H	SMAD3 (Ser423/425)	H,M,R
MMP-1	H	PDGF-AB/BB	H	SMAD4 (total)	H,M,R
MMP-2	H,M	PDGF-BB	F	SOX2 (autoantibody)	H
MMP-3	H,M	PDGFRα (panTyr)	H,M,R	Src (Tyr419)	H,M,R
MMP-7	H	PDGFRβ (panTyr)	H,M,R	SSA/Ro52 (Sjögren's Syndrome-related antigen A/Ro52 kDa) (autoantibody)	H
MMP-8	H,M	PD-L1	H,M	SSA/Ro60 (Sjögren's Syndrome-related antigen A/Ro60 kDa) (autoantibody)	H
MMP-9	H	PD-L2	H,M	SSB/La (Sjögren's Syndrome-related antigen B/La) (autoantibody)	H
MMP-10	H	PEDF	H	STAT1 (Tyr701)	H,M
MMP-12	H,M	Pentraxin-3 (PTX3)	H	STAT2 (Tyr690)	H
MMP-13	H	Perforin	H,NHP	STAT3 (total)	H,M,R
MPIF/CCL23	H	Periostin	H	STAT3 (Ser727)	H,M,R
MSK1 (Ser212)	H,M	Progranulin (pGRN)	H	STAT3 (Tyr705)	H,M,R
mTOR (Ser2448)	H,M,R	PL-12 (Alanyl-tRNA Synthetase) (autoantibody)	H	STAT5A/B (total)	H,M,R
mTOR (total)	H,M,R	Placental Growth Factor 2	M	STAT5A/B (Tyr694/699)	H,M,R
Mucin-1 (MUC1) (autoantibody)	H	Placental Growth Factor (PLGF)	H	STAT6 (Tyr641)	H
Myeloperoxidase (MPO)	H	Platelet Factor 4 (PF4)/CXCL4	H	Substance P	H,M,R
Myeloperoxidase (MPO) (autoantibody)	H	PM/Scl 100 (autoantibody)	H	Superoxide Dismutase 1 (soluble) (sSOD1)	H
Myoglobin	H	Progesterone	Mul		
Myosin Light Chain 3 (MYL3)	R	Prolactin	C,H,M,R		
Myostatin/GDF8	H,M,R				

B/Bovine, C/Canine, E/Equine, F/Feline, G/Chicken, H/Human, M/Mouse, Mul/Multi-Species, NHP/Non-Human Primate, O/Ovine, Por/Porcine, R/Rat

MILLIPLEX® Analyte Species Index (continued)

Analyte	Species	Analyte	Species	Analyte	Species
Superoxide Dismutase 2 (soluble) (sSOD2)	H	TIMP-3	H	V	
Survivin/BIRC5 (autoantibody)	H	TIMP-4	H	VCAM-1 (soluble)	H
Syk (panTyr)	H	Tissue Factor (TF)	H	VEGF	G,R
T		TLR-2	H,M	VEGF-A	B,H,M,NHP,O,R
T3	Mul,R	TNFR1 (total)	H	VEGF-C	H,M
T4	Mul,R	TNFa	B,C,E,F,H,M,NHP,O,Por,R	VEGF-D	H,M
TARC/CCL17	H,M	TNFa (autoantibody)	H	VEGFR1/Flt-1 (panTyr)	H
Tau (Total)	H	TNFβ/Lymphotoxin-α (LTA)	H,M,NHP	VEGFR1/Flt-1 (soluble)	H,M
Tau (Thr181)	H	TNF RI (soluble) (sTNFR1)	H,M	VEGFR2/KDR/Flk-1 (panTyr)	H
Tenascin-C (TN-C)	H	TNF RII (soluble) (sTNFR2)	H,M	VEGFR2/KDR/Flk-1 (soluble)	H,M
Testosterone	Mul	TPO	H,M,R	VEGFR3/Flt-4 (panTyr)	H,M,R
TFF-3	C,H	TRAIL/TNFSF10	H	VEGFR3/Flt-4 (soluble)	H,M
TGFa	H,NHP	Transglutaminase 2 (TGM2)	H	Vitamin D Binding Protein	H
TGFβ1	Mul	TRAP5	H	Y	
TGFβ2	Mul	TREM2	H	Yes (Tyr421)	H,M,R
TGFβ3	Mul	Troponin I (TnI)	H,M	YKL40/CHI3L1	H
TGFβRII (total)	H	Troponin T (TnT)	H,M	Z	
Thrombomodulin	H,M	TSC2 (total)	H,M,R	ZAP-70 (panTyr)	H
Thrombospondin-1 (TSP-1)	H	TSC2 (Ser939)	H,M,R		
Thrombospondin-2 (TSP-2)	H	TSH	C,H,M,NHP,R		
TIE1 (panTyr)	H	TSLP	H		
TIE2 (panTyr)	H	TWEAK	H		
Tie-2 (soluble)	H	U			
TIM-3	H,M	ucMGP	H		
TIMP-1	H,M,R	uPAR (soluble)/CD87	H		
TIMP-2	H	Uromodulin	H		
		Uteroglobin	H		

B/Bovine, C/Canine, E/Equine, F/Feline, G/Chicken, H/Human, M/Mouse, Mul/Multi-Species, NHP/Non-Human Primate, O/Ovine, Por/Porcine, R/Rat

H/Human pp. 25-29; NHP/Non-Human Primate p. 30; M/Mouse pp. 30-32; R/Rat pp. 32-33; All other species p. 34; Cell Signaling kits pp. 35-38

What's in the MILLIPLEX® kit?



HUMAN

Immunology

Human Cytokine/Chemokine/ Growth Factor Panel A

□ (Cat. No. HCYTA-60K)	
38 (Cat. No. HCYTA-60K-PX38) ♦	
38 (Cat. No. HCYTA-60K-PXBK38) ♦	
48 (Cat. No. HCYTA-60K-PX48)	
48 (Cat. No. HCYTA-60K-PXBK48)	
sCD40L	IL-13 ♦
EGF ♦	IL-15 ♦
Eotaxin/CCL11 ♦	IL-17A/CTLA8 ♦
FGF-2/FGF-basic	IL-17E/IL-25 ♦
Flt3 Ligand	IL-17F ♦
Fractalkine/CX3CL1	IL-18 ♦
G-CSF ♦	IL-22 ♦
GM-CSF ♦	IL-27
GRO α	IP-10/CXCL10 ♦
IFN α 2 ♦	MCP-1/CCL2 ♦
IFN γ ♦	MCP-3/CCL7
IL-1 α ♦	M-CSF ♦
IL-1 β ♦	MDC/CCL22
IL-1RA ♦	MIG/CXCL9 ♦
IL-2 ♦	MIP-1 α /CCL3 ♦
IL-3 ♦	MIP-1 β /CCL4 ♦
IL-4 ♦	PDGF-AA ♦
IL-5 ♦	PDGF-AB/BB ♦
IL-6 ♦	RANTES/CCL5 ♦▲°
IL-7 ♦	TGF α
IL-8/CXCL8 ♦	TNF α ♦
IL-9	TNF β /Lymphotoxin- α (LTA) ♦
IL-10 ♦	VEGF-A ♦
IL-12 (p40) ♦	
IL-12 (p70) ♦	

Human Cytokine/Chemokine Panel I

□ (Cat. No. HCYTOMAG-60K)	
29 (Cat. No. HCYTMAG-60K-PX29)	
29 (Bulk Cat. No. HCYTMAG60PMX29BK)	
30 (Cat. No. HCYTMAG-60K-PX30) ♦	
30 (Bulk Cat. No. HCYTMAG60PMX30BK) ♦	
33 (Cat. No. HCYTMAG-60K-PX38)	
33 (Bulk Cat. No. HCYTMAG60PMX38BK)	
41 (Cat. No. HCYTMAG-60K-PX41)	
41 (Bulk Cat. No. HCYTMAG60PMX41BK)	
sCD40L	IL-9
EGF ♦	IL-10 ♦
Eotaxin/CCL11 ♦	IL-12 (p40) ♦
FGF-2/FGF-basic	IL-12 (p70) ♦
Flt3 Ligand	IL-13 ♦
Fractalkine/CX3CL1	IL-15 ♦
G-CSF ♦	IL-17A/CTLA8 ♦
GM-CSF ♦	IP-10/CXCL10 ♦
GRO	MCP-1/CCL2 ♦
IFN α 2 ♦	MCP-3/CCL7
IFN γ ♦	MDC/CCL22
IL-1 α ♦	MIP-1 α /CCL3 ♦
IL-1 β ♦	MIP-1 β /CCL4 ♦
IL-1Ra ♦	PDGF-AA ▲°
IL-2 ♦	PDGF-AB/BB ▲°
IL-3 ♦	RANTES/CCL5 ♦▲°
IL-4 ♦	TGF α
IL-5 ♦	TNF α ♦
IL-6 ♦	TNF β /Lymphotoxin- α (LTA) ♦
IL-7 ♦	VEGF-A ♦
IL-8/CXCL8 ♦	

Human Cytokine/Chemokine Panel II

□ (Cat. No. HCYP2MAG-62K)	
23 (Cat. No. HCP2MAG-62K-PX23)	
23 (Bulk Cat. No. HCP2MAG62KPX23BK)	
6Ckine/CCL21/ Exodus-2	IL-28A/IFN λ 2
BCA-1/CXCL13	IL-33/NF-HEV (mature)
CTACK/CCL27	LIF
ENA-78/CXCL5	MCP-2/CCL8
Eotaxin-2/CCL24/ MPIF-2	MCP-4/CCL13
Eotaxin-3/CCL26	MIP-1 δ /MIP-5/CCL15
I-309/CCL1	SCF
IL-16	SDF-1/CXCL12
IL-20	TARC/CCL17
IL-21	TPO
IL-23	TRAIL/TNFSF10
	TSLP

Human Cytokine/Chemokine Panel III

(Cat. No. HCYP3MAG-63K)	
HCC-1/CCL14 ▲	M-CSF
IL-11	MIG/CXCL9
IL-29/IFN λ 1	MIP-3 α /CCL20
I-TAC/CXCL11	MIP-3 β /CCL19
LIX/CXCL6/GCP-2	NAP-2/CXCL7 ▲
Lymphotoxin/XCL1	

Human Cytokine/Chemokine Panel IV

□ (Cat. No. HCYP4MAG-64K)	
20 (Cat. No. HCY4MG-64K-PX20)	
20 (Bulk Cat. No. HCP4MG64KPX20BK)	
BAFF/Blys	IL-28B/IFN λ 3
BRAK/CXCL14	IL-32 α
CCL28	IL-34
CXCL16	IL-35
HCC-4/CCL16	IL-36 β /IL-1F8
HMGB1 ●	IL-37/IL-1F7
IFN β	IL-38/IL-1F10
IL-14/ α -Taxilin	MIP-4/PARC/CCL18
IL-19	MPIF/CCL23
IL-24	YKL40/CHI3L1

Human IL-18 Singleplex

(Cat. No. HIL18MAG-66K)	
IL-18	

Human High Sensitivity T Cell

□ (Cat. No. HSTCMAG-28SK)	
13 (Cat. No. HSTCMAG28SPMX13) ♦	
15 (Bulk Cat. No. HSTCMAG28SPMX13BK) ♦	
21 (Cat. No. HSTCMAG28SPMX21)	
21 (Bulk Cat. No. HSTCMAG28SPMX21BK)	
Fractalkine/CX3CL1	IL-12 (p70) ♦
GM-CSF ♦	IL-13 ♦
IFN γ ♦	IL-17A/CTLA8
IL-1 β ♦	IL-21
IL-2 ♦	IL-23
IL-4 ♦	I-TAC/CXCL11
IL-5 ♦	MIP-1 α /CCL3
IL-6 ♦	MIP-1 β /CCL4
IL-7 ♦	MIP-3 α /CCL20
IL-8/CXCL8 ♦	TNF α ♦
IL-10 ♦	

384-Well Human High Sensitivity T Cell

(Cat. No. HSTC384-28K)	
21 (Cat. No. HSTCMAG384-PX21)	
21 (Bulk Cat. No. HSTCMAG384PX21BK)	
Fractalkine/CX3CL1	IL-12 (p70)
GM-CSF	IL-13
IFN γ	IL-17A/CTLA8
IL-1 β	IL-21
IL-2	IL-23
IL-4	I-TAC/CXCL11
IL-5	MIP-1 α /CCL3
IL-6	MIP-1 β /CCL4
IL-7	MIP-3 α /CCL20
IL-8/CXCL8	TNF α
IL-10	

Legend key for MILLIPLEX® kits

† Analytes which cannot be plexed together:
 - Active and total
 - Free and total
 ♦ Available in Cat. No. listed
 ▼ Premix panel only
 Bulk indicates Space Saver Packaging
 ▲ These analytes cannot be plexed with other analytes in this panel in serum/plasma

▶ Requires a protease inhibitor during sample collection
 ■ Requires sample extraction
 ** No standard/QC; antibody levels are reported as MFIs (Median Fluorescence Intensities)
 ● Serum/Plasma only
 ★ Tissue Culture samples only

^ Competitive assay format
 □ Available for custom premix
 ° Analyte requires a different sample dilution from others in panel
 ○ Analyte cannot be measured in serum
 # Requires sample acidification
 § Analyte cannot be measured in plasma
 u Urine only

Human Th17

(Cat. No. HTH17MAG-14K)

25 (Cat. No. HT17MG-14K-PX25)

25 (Bulk Cat. No. HT17MAG14PMX25BK)

GM-CSF	IL-17E/IL-25
IFN γ	IL-17F
IL-1 β	IL-21
IL-2	IL-22
IL-4	IL-23
IL-5	IL-27
IL-6	IL-28A/IFN λ 2
IL-9	IL-31
IL-10	IL-33/NF-HEV (mature)
IL-12 (p70)	MIP-3 α /CCL20
IL-13	TNF α
IL-15	TNF β /Lymphotoxin- α (LTA)
IL-17A/CTLA8	

Human CD8+ T Cell

20 (Cat. No. HCD8MAG-15K)

17 (Cat. No. HCD8MAG15K17PMX)

17 (Bulk Cat. No. HCD8MAG15K17BK)

sCD137/4-1BB/ TNFRSF9	IL-4
sFAS/TNFRSF6	IL-5
sFasL	IL-6
GM-CSF	IL-10
Granzyme A	IL-13
Granzyme B	MIP-1 α /CCL3
IFN γ	MIP-1 β /CCL4
IL-2	Perforin
	TNF α

Human Soluble Cytokine Receptor

(Cat. No. HSCRMAG-32K)

14 (Cat. No. HSCRMAG32KPX14)

14 (Bulk Cat. No. HSCRMAG32PMX14BK)

sCD30	sIL-6R
sEGFR/sHER1/ErbB1	sRAGE
sGP130	sTNF RI
sIL-1RI	sTNF RII
sIL-1RII	sVEGFR1/sFlt-1
sIL-2R α	sVEGFR2/sKDR/sFlk-1
sIL-4R	sVEGFR3/sFlt-4

Human Complement Panel 1

(Cat. No. HCMP1MAG-19K)

Adipsin/Factor D	C5a
C2	Factor I
C4b	Mannose-binding Lectin (MBL)
C5	

Human Complement Panel 2

(Cat. No. HCMP2MAG-19K)

C1q	C4
C3	Factor B
C3b	Factor H

Human MMP Panel 1

(Cat. No. HMMP1MAG-55K)

MMP-3	MMP-13
MMP-12	

Human MMP Panel 2

(Cat. No. HMMP2MAG-55K)

MMP-1	MMP-9
MMP-2	MMP-10
MMP-7	

Human TIMP Panel 1 (Serum/Plasma samples)

(Cat. No. HTMP1MAG-54K)

TIMP-1	TIMP-2
--------	--------

Human TIMP Panel 2 (Cell culture samples)

(Cat. No. HTMP2MAG-54K)

TIMP-1	TIMP-3
TIMP-2	TIMP-4

Multi-Species TGF β – Singleplex #

(Cat. No. TGFBMAG-64K-01)

(Bulk Cat. No. TGFBMAG-64K-01BK)

TGF β 1

Multi-Species TGF β – 3 Plex ▼#

(Cat. No. TGFBMAG-64K-03)

NON-CONFIGURABLE KIT

TGF β 1	TGF β 3
TGF β 2	

Human Fibrosis Panel 1

(Cat. No. HFIB1-100K)

COMP	Uteroglobin
IL-18BP α	

Immune Response**Human Autoimmune Autoantibody****

(Cat. No. HAIAB-10K)

β 2-Glycoprotein I	Ribosomal P
C1q	RNP
CENP-A (Centromere Protein A)	(Ribonucleoprotein) RNP/Smith (RNP/Sm)
CENP-B (Centromere Protein B)	Sm
Jo-1	Scl-70
Ku	Sm
Mi-2	SSA/Ro52 (Sjögren's Syndrome-related antigen A/Ro52 kDa)
Myeloperoxidase (MPO)	SSA/Ro60 (Sjögren's Syndrome-related antigen A/Ro60 kDa)
PCNA (Proliferating Cell Nuclear Antigen A)	SSB/La (Sjögren's Syndrome-related antigen B/La)
PL-12 (Alanyl-tRNA Synthetase)	
PM/Scl 100	
Proteinase 3	

Human Cytokine Autoantibody**

(Cat. No. HCYTAAB-17K)

BAFF/Blys	IL-12 (p40)
G-CSF	IL-15
IFN β	IL-17A/CTLA8
IFN γ	IL-17F
IL-1 α	IL-18
IL-6	IL-22
IL-8/CXCL8	TNF α
IL-10	

Human Sepsis Panel 1

(Cat. No. HSP1MAG-63K)

sFAS/TNFRSF6	MIF
sFasL	PAI-1 (total)
sICAM-1	sVCAM-1

Human Sepsis Panel 2

(Cat. No. HSP2MAG-63K)

Granzyme B	MIP-1 α /CCL3
HSP70	MIP-1 β /CCL4
IL-1 α	MMP-8
IL-8/CXCL8	

Human Sepsis Panel 3

(Cat. No. HSP3MAG-63K)

Lactotransferrin (LTF)	Resistin
Neutrophil Elastase-2 (ELA2)	Thrombospondin-1 (TSP-1)
NGAL/Lipocalin-2	

Human Skin (Skin extracts only)

(Cat. No. SKINMAG-50K)

Cortisol [^]	Involucrin
Human Serum Albumin (HSA)	Keratin-1,10
	Keratin-6

Human Immunoglobulin Isotyping

20 (Cat. No. HGAMMAG-301K)

IgA	IgG3
IgG1	IgG4
IgG2	IgM

Human IgE – Singleplex

(Cat. No. HGAMMAG-303E)

IgE

Virology**SARS-CoV-2 Antigen Panel 1 IgA****

(Cat. No. HC19SERA1-85K)

SARS-CoV-2 N	SARS-CoV-2 Spike S1
SARS-CoV-2 RBD	SARS-CoV-2 Spike S2

SARS-CoV-2 Antigen Panel 1 IgG**

(Cat. No. HC19SERG1-85K)

SARS-CoV-2 N	SARS-CoV-2 Spike S1
SARS-CoV-2 RBD	SARS-CoV-2 Spike S2

SARS-CoV-2 Antigen Panel 1 IgM**

(Cat. No. HC19SERM1-85K)

SARS-CoV-2 N	SARS-CoV-2 Spike S1
SARS-CoV-2 RBD	SARS-CoV-2 Spike S2

For Research Use Only. Not For Use In Diagnostic Procedures.**Metabolism/Endocrinology****Human Adipokine Panel 1 (Serum/Plasma samples)**

(Cat. No. HADK1MAG-61K)

Adiponectin	PAI-1 (total)
Adipsin/Factor D	Resistin
NGAL/Lipocalin-2	

Human Adipokine Panel 2 (Serum/Plasma samples)

(Cat. No. HADK2MAG-61K)

IL-1β	Leptin
IL-6	MCP-1/CCL2
IL-8/CXCL8	NGF
Insulin	TNFα

Human Adipocyte (Cell culture samples)

(Cat. No. HADCYMAG-61K)

Adiponectin	MCP-1/CCL2
HGF	NGF
IL-1β	PAI-1 (total)
IL-6	Resistin
IL-8/CXCL8	TNFα
Leptin	

Human Diabetes ▼

⑤ (Cat.No. HDIAB-34K-PMX5)

⑤ (Bulk Cat. No. HDIAB34KPMX5BK)

NON-CONFIGURABLE KIT

C-Peptide	Insulin
GLP-1 (active)▶	Leptin
Glucagon▶	

Human Metabolic Hormone V3

(Cat. No. HMH3-34K)

Amylin (active) †▶	Insulin
Amylin (total) †▶	Leptin
C-Peptide	MCP-1/CCL2
Ghrelin (active) ▶	Pancreatic Polypeptide (PP)
GIP (total)	PYY (total)
GLP-1 (active) †▶	Secretin
GLP-1 (total) †▶	TNFα
Glucagon ▶	
IL-6	

Human Metabolic Hormone

(Cat. No. HMHEMAG-34K)

Amylin (active) †▶	IL-6
Amylin (total) †▶	Insulin
C-Peptide	Leptin
Ghrelin (active)▶	MCP-1/CCL2
GIP (total)	Pancreatic Polypeptide (PP)
GLP-1 (active) †▶	PYY (total)
GLP-1 (total) †▶	TNFα
Glucagon▶	

Human Myokine

(Cat. No. HMVOMAG-56K)

Apelin	IL-15
BDNF	Irisin
Erythropoietin (EPO)	LIF
FABP3	Myostatin/GDF8
FGF-21	Oncostatin-M (OSM)
Fractalkine/CX3CL1	Osteocrin (OSTN)/Musclin
FSTL1	
IL-6	Osteonectin/SPARC

Human Aging Panel 1

(Cat. No. HAGE1MAG-20K)

CTACK/CCL27	IL-6
FGF-21	IL-10*
GDF-11	IL-18
GDF15	Jag1
GnRH	Leptin

Human Liver Protein

(Cat. No. HLPPMAG-57K)

α-Fetoprotein (AFP)	FGF-19
ANGPTL3	FGF-21
ANGPTL4	FGF-23
ANGPTL6	HGF
FABP1	

Human IGF Binding Protein▶

(Cat. No. HIGFBMAG-53K)

IGFBP1	IGFBP5
IGFBP2	IGFBP6
IGFBP3*	IGFBP7
IGFBP4	

Human IGF■

(Cat. No. HIGFMAG-52K)

IGF-1	IGF-2
-------	-------

Human Pituitary Panel 1

(Cat. No. HPTP1MAG-66K)

ACTH	FSH
Agouti-Related Protein (AgRP)	GH
CNTF	LH
	TSH

Multi-Species Hormone ■ ^

(Cat. No. MSHMAG-21K)

Cortisol	Testosterone
Estradiol	T3
Progesterone	T4

Cardiovascular**Human CVD Panel 1**

(Cat. No. HCVD1MAG-67K)

BNP	LIGHT
CK-MB	NT proBNP
CXCL6/GCP-2	Oncostatin-M (OSM)
CXCL16	Placental Growth Factor (PLGF)
Endocan-1 (ESM-1)	Troponin I (TnI)
FABP3	
FABP4	

Human CVD Panel 2

(Cat. No. HCVD2MAG-67K)

ADAMTS13	Myoglobin
D-dimer ⁵	NGAL/Lipocalin-2
GDF15	sP-Selectin
sICAM-1	Serum Amyloid A
Myeloperoxidase (MPO)	sVCAM-1

Human CVD Panel 3 (Acute Phase)

(Cat. No. HCVD3MAG-67K)

α-1-Acid Glycoprotein (AGP)	Haptoglobin
α-2-Macroglobulin	sL-Selectin
Adipsin/Factor D	Platelet Factor 4 (PF4)/CXCL4
CRP	Serum Amyloid P (SAP)
Fetuin A	
Fibrinogen ⊙	

Human CVD Panel 4

(Cat. No. HCVD4MAG-67K)

sCD31/sPECAM-1	Thrombomodulin
sE-Selectin	Tissue Factor (TF)
Follistatin (FST)	Troponin T (TnT)
Pentraxin-3 (PTX3)	

Legend key for MILLIPLEX® kits

† Analytes which cannot be plexed together:
 - Active and total
 - Free and total

♦ Available in Cat. No. listed

▼ Premix panel only

Bulk indicates Space Saver Packaging

▲ These analytes cannot be plexed with other analytes in this panel in serum/plasma

▶ Requires a protease inhibitor during sample collection

■ Requires sample extraction

** No standard/QC; antibody levels are reported as MFIs (Median Fluorescence Intensities)

● Serum/Plasma only

★ Tissue Culture samples only

^ Competitive assay format

Ⓞ Available for custom premix

◦ Analyte requires a different sample dilution from others in panel

⊙ Analyte cannot be measured in serum

Requires sample acidification

⁵ Analyte cannot be measured in plasma^u Urine only

Human CVD Panel 6

(Cat. No. HCV6MAG-67K)

sCD14	MCAM/MUC18
DPP4	Progranulin (pGRN)
Endostatin	ucMGP
LRG1	

Human Apolipoprotein

(Cat. No. APOMAG-62K)

Apo AI	Apo CII
Apo AII	Apo CIII
Apo B	Apo E

Bone**Human Bone**

(Cat. No. HBNMAG-51K)

ACTH	Osteocalcin (OC)
DKK1	Osteopontin (OPN)
FGF-23	Osteoprotegerin (OPG)
IL-1β	PTH
IL-6	Sclerostin (SOST)
Insulin	TNFα
Leptin	

Human RANKL – Singleplex

(Cat. No. HRNLMAG-51K-01)

RANKL

Cancer**Human Immuno-Oncology Checkpoint Protein Panel 1**

(Cat. No. HCKP1-11K)

① (Cat. No. HCKP1-11K-PX17)

② (Bulk Cat. No. HCKP1-11K-PXBK17)

BTLA	HVEM
CD27	ICOS
CD28	LAG-3
CD40	PD-1
CD80/B7-1	PD-L1
CD86/B7-2	PD-L2
CTLA-4/CD152	TIM-3
GITR	TLR-2
GITRL	

Human Immuno-Oncology Checkpoint Protein Panel 2

(Cat. No. HCKP2-11K)

4-1BBL/TNFSF9	FGL1/Hepassocin
5'-NT/CD73	Galectin-1
APRIL	Galectin-3
Arginase-1	Granulysin
B7-H2/ICOSL	Granzyme B
B7-H3/CD276	IDO1
B7-H4/VTCN1	MICA
B7-H5/VISTA	MICB
B7-H6	Nectin-2
BAFF/BLyS	Nectin-4
CD25/IL-2Rα	OX40/CD134
CD30/TNFRSF8	Perforin
CD40L	PVR/CD155
CD137/4-1BB	Siglec-7
CD226/DNAM-1	Siglec-9
E-Cadherin	

Human Cancer Autoantibody**

(Cat. No. HCABMAG-13K)

CCNB1/Cyclin B1	IGF2BP2/IMP2
CTAG1B/NY-ESO-1	IGF2BP3/IMP3
ENO1	Mucin-1 (MUC1)
Galectin-1 (GAL1)	P16-INK4a
Galectin-3 (GAL3)	p53
HER2/ErbB2	SOX2
HIF-1α	Survivin/BIRC5
HSP60	

Human Circulating Cancer Biomarker Panel 1

(Cat. No. HCCBP1MAG-58K)

α-Fetoprotein (AFP)	IL-8/CXCL8
CA125	Leptin
CA15-3	MIF
CA19-9	Osteopontin (OPN)
CEA	Prolactin
CYFRA21-1	PSA (free)†
sFAS/TNFRSF6	PSA (total)†
sFasL	SCF
FGF-2/FGF-basic	TGFα
HCGβ	TNFα
HE4	TRAIL/TNFSF10
HGF	VEGF-A
IL-6	

Human Circulating Cancer Biomarker Panel 2

(Cat. No. HCCBP2MAG-58K)

Antithrombin III	Extracellular Matrix Protein 1 (ECM1)
Complement Factor H (CFH)	Vitamin D Binding Protein

Human Circulating Cancer Biomarker Panel 3

(Cat. No. HCCBP3MAG-58K)

Cathepsin D	Melanoma Inhibitory Activity (MIA)
Ferritin	Myeloperoxidase (MPO)
Fibroblast Activation Protein (FAP)	Sex Hormone Binding Globulin (SHBG)
Galectin-3	
IGFBP3	

Human Circulating Cancer Biomarker Panel 4

(Cat. No. HCCB4MAG-58K)

ALDH1A1	Kallikrein-6
Carbonic Anhydrase 9 (CA9)	Mesothelin
CD44	Midkine
EpCAM	NCAM1/L1CAM/CD171
Hepsin	Transglutaminase 2 (TGM2)

Human Cancer/Metastasis Biomarker Panel 1

(Cat. No. HCMBMAG-22K)

DKK1	Osteoprotegerin (OPG)
GDF15	Periostin
Neuron-specific Enolase (NSE)	TRAP5
Osteonectin/SPARC	TWEAK
	YKL40/CHI3L1

Human Angiogenesis/Growth Factor Panel 1

(Cat. No. HAGP1MAG-12K)

Angiopoietin-2	HB-EGF
BMP-9	HGF
EGF	IL-8/CXCL8
Endoglin	Leptin
Endothelin-1	Placental Growth Factor (PLGF)
FGF-1/FGF-acidic	VEGF-A
FGF-2/FGF-basic	VEGF-C
Follistatin (FST)	VEGF-D
G-CSF	

Human Angiogenesis Panel 2

(Cat. No. HANG2MAG-12K)

Angiostatin/Kringle sAXL	sIL-6Rα
sCD31/sPECAM-1	sNeuropilin-1 (sNRP-1)
sc-Kit/sStem Cell Factor Receptor (SCFR)	Osteopontin (OPN)
sE-Selectin	PDGF-AB/BB
sEGFR/sHER1/sErbB1	Tenascin-C (TN-C)
sHER2/sEGFR2/sErbB2	Thrombospondin-2 (TSP-2)
sHER3/sEGFR3/sErbB3	STIE-2
sHGFR/sc-Met	suPAR
	sVEGFR1/sFlt-1
	sVEGFR2/sKDR/sFlk-1
	sVEGFR3/sFlt-4

Neuroscience

Human Amyloid Beta and Tau (CSF samples)

(Cat. No. HNABTMAG-68K)

Amyloid beta 1-40	pTau (Thr181)
Amyloid beta 1-42	Tau (total)

Human Neuroscience Panel 1 (CSF samples)

(Cat. No. HNS1MAG-95K)

α-Synuclein	PARK5/UCLH1
Glial Fibrillary Acidic Protein (GFAP)	PARK7/DJ1
Neuron-specific Enolase (NSE)	Transglutaminase 2 (TGM2)

Human Neuroscience Panel 2

(Cat. No. HNS2MAG-95K)

Angiogenin (ANG) ^o	Ferritin
ApoE4 ^o	Neurogranin (NRGN)
FABP3	TREM2

Human Neurodegenerative Disease Panel 1

(Cat. No. HNDG1MAG-36K)

α-2-Macroglobulin	Complement Factor C3
Apo AI	Complement Factor H (CFH)
Apo CIII	
Apo E	

Human Neurodegenerative Disease Panel 2

(Cat. No. HNDG2MAG-36K)

α-1-Antitrypsin (A1AT)	MIP-4/PARC/CCL18
C4	PEDF
CRP	Serum Amyloid P (SAP)

Human Neurodegenerative Disease Panel 3

(Cat. No. HNDG3MAG-36K)

BDNF	PAI-1 (total)
Cathepsin D	PDGF-AA
sICAM-1	PDGF-AB/BB
Myeloperoxidase (MPO)	RANTES/CCL5
sNCAM	sVCAM-1

Human Neurodegenerative Disease Panel 4 (CSF samples)

(Cat. No. HNDG4MAG-36K)

Amyloid beta 1-40	sRAGE
Amyloid beta 1-42	S100B
GDNF	

Human Neurological Disorders Panel 3

(Cat. No. HND3MAG-39K)

Angiotensinogen (AGT)	Osteopontin (OPN)
Contactin-1	Soluble Superoxide Dismutase 1 (sSOD1)
Fetuin A ^o	Soluble Superoxide Dismutase 2 (sSOD2)
Kallikrein-6	

Human Neuropeptide[■] ^

(Cat. No. HNPMAg-35K)

α-MSH	Oxytocin
β-Endorphin	Substance P
Neurotensin	

Human Circadian Stress[■] ^

(Cat. No. HNCSMAG-35K)

Cortisol	Melatonin
----------	-----------

Toxicity

Human Kidney Injury Panel 1 (Urine samples)

(Cat. No. HKI1MAG-99K)

Calbindin	KIM-1
Collagen IV	Renin
FABP1	TFF-3
GSTα	TIMP-1
IP-10/CXCL10	

Human Kidney Injury Panel 2 (Urine samples)

(Cat. No. HKI2MAG-99K)

α-1-Microglobulin	EGF
Albumin	NGAL/Lipocalin-2
Clusterin	Osteopontin (OPN)
Cystatin C	

Human Kidney Injury Panel 3 (Urine samples)

(Cat. No. HKI3MAG-99K)

β-2-Microglobulin RBP4	Uromodulin
------------------------	------------

Human Kidney Injury Panel 4 (Serum/Plasma samples)

(Cat. No. HKI4MAG-99K)

EGF	Osteopontin (OPN)
FABP1	PTH
IP-10/CXCL10	Renin
KIM-1	

Human Kidney Injury Panel 5 (Serum/Plasma samples)

(Cat. No. HKI5MAG-99K)

α-1-Microglobulin	Osteoactivin
Collagen IV	TIMP-1
NGAL/Lipocalin-2	Uromodulin

Human Kidney Injury Panel 6 (Serum/Plasma samples)

(Cat. No. HKI6MAG-99K)

β-2-Microglobulin	Cystatin C
Clusterin	RBP4

Human Liver Injury

(Cat. No. HLINJMAG-75K)

5'NT/CD73	MDH1
ARG1	SDH
GSTα	

Need Some Advice on Running Assays?

To perfect your methods, visit our MILLIPLEX® FAQs page and download our Tips and Tricks brochure at SigmaAldrich.com/milliplex-faq.

Legend key for MILLIPLEX® kits

- † Analytes which cannot be plexed together:
 - Active and total
 - Free and total
- ◆ Available in Cat. No. listed
- ▼ Premix panel only
- Bulk indicates Space Saver Packaging
- ▲ These analytes cannot be plexed with other analytes in this panel in serum/plasma

- ▶ Requires a protease inhibitor during sample collection
- Requires sample extraction
- ** No standard/QC; antibody levels are reported as MFIs (Median Fluorescence Intensities)
- Serum/Plasma only
- ★ Tissue Culture samples only

- ^ Competitive assay format
- Ⓞ Available for custom premix
- Analyte requires a different sample dilution from others in panel
- Ⓢ Analyte cannot be measured in serum
- # Requires sample acidification
- ˚ Analyte cannot be measured in plasma
- u Urine only

PRIMATE

Immunology

Non-Human Primate Cytokine/
Chemokine /Growth Factor
Panel A **NEW**

- (Cat. No. PRCYTA-40K)
- (Cat. No. PRCYTA-40K-PX38)◆
- (Cat. No. PRCYTA-40K-BK38)◆
- (Cat. No. PRCYTA-40K-PX48)
- (Cat. No. PRCYTA-40K-BK48)

BCA-1	IL-15◆
sCD137◆	IL-16
CD40L◆	IL-17A◆
Eotaxin	IL-17E
sFASL◆	IL-18◆
FGF-2	IL-21◆
Fractalkine	IL-22◆
G-CSF◆	IL-23◆
GM-CSF◆	IL-28A
Granzyme A◆	IL-31
Granzyme B◆	IL-33◆
IFNa2◆	IP-10◆
IFNγ◆	I-TAC◆
IL-1α	MCP-1◆
IL-1β◆	MIG◆
IL-1RA◆	MIP-1α◆
IL-2◆	MIP-1β◆
IL-4◆	MIP-3α◆
IL-5◆	Perforin◆
IL-6◆	RANTES◆▲◆
IL-7◆	TGFα◆
IL-8◆	TNFα◆
IL-10◆	TNFβ
IL-12 (p70)◆	VEGF-A◆

Non-Human Primate
Cytokine/Chemokine Panel 1

- (Cat. No. PRCYTOMAG-40K)
- (Cat. No. PCYTMG-40K-PX23)
- (Bulk Cat. No. PRCYMAG40PMX23BK)

sCD40L	IL-12/23 (p40)
G-CSF	IL-13
GM-CSF	IL-15
IFNγ	IL-17A/CTLA8
IL-1β	IL-18
IL-1Ra	MCP-1/CCL2
IL-2	MIP-1α/CCL3
IL-4	MIP-1β/CCL4
IL-5	TGFα
IL-6	TNFα
IL-8/CXCL8	VEGF-A
IL-10	

Non-Human Primate
Cytokine/Chemokine Panel 2

- (Cat. No. PRCYT2MAG40K)
- (Cat. No. PRCYTMAG40K-PX24)
- (Bulk Cat. No. PRCY2MG40PMX24BK)
- (Cat. No. PRCYTMAG40K-PX25)
- (Bulk Cat. No. PRCY2MG40PMX25BK)

sCD137/4-1BB/ TNFRSF9	IL-17E/IL-25
Eotaxin/CCL11	IL-21
sFasL	IL-22
FGF-2/FGF-basic	IL-23
Fractalkine/CX3CL1	IL-28A/IFNA2
Granzyme A	IL-31
Granzyme B	IL-33/NF-HEV (mature)
IL-1α	IP-10/CXCL10
IL-2	MIP-3α/CCL20
IL-4	Perforin
IL-6	RANTES/CCL5▲
IL-16	TNFβ/Lymphotoxin-α (LTA)
IL-17A/CTLA8	

Multi-Species TGFβ –
Singleplex #

- (Cat. No. TGFBMAG-64K-01)
- (Bulk Cat. No. TGFBMAG-64K-01BK)

TGFβ1

Multi-Species TGFβ –
3 Plex ▼#

- (Cat. No. TGFBMAG-64K-03)

NON-CONFIGURABLE KITTGFβ1 TGFβ3
TGFβ2Metabolism/
EndocrinologyNon-Human Primate
Metabolic Hormone

- (Cat. No. NHPMHMAG-45K)

Amylin (active)◆	Insulin
C-Peptide	Leptin
Ghrelin (active)◆	MCP-1/CCL2
GIP (total)	Pancreatic Polypeptide (PP)
GLP-1 (active)◆	PYY (total)
Glucagon◆	
IL-6	

Non-Human Primate Pituitary
Panel 1

- (Cat. No. NHPPT1MG-46K)

ACTH	FSH
Agouti-Related Protein (AgRP)	GH
CNTF	LH
	TSH

Multi-Species Hormone ■ ^

- (Cat. No. MSHMAG-21K)

Cortisol	Testosterone
Estradiol	T3
Progesterone	T4

MOUSE

Immunology

Mouse Cytokine/Chemokine
Panel 1

- (Cat. No. MCYTOMAG-70K)
- (Cat. No. MCYTOMAG-70K-PMX)◆
- (Bulk Cat. No. MCYTOMAG70PMX25BK)◆
- (Cat. No. MCYTOMAG-70K-PX32)
- (Bulk Cat. No. MCYTOMAG70PMX32BK)

Eotaxin/CCL11	IL-13◆
G-CSF◆	IL-15◆
GM-CSF◆	IL-17A/CTLA8◆
IFNγ◆	IP-10/CXCL10◆
IL-1α◆	KC/GRO/CINC-1/ CXCL1◆
IL-1β◆	LIF
IL-2◆	LIX
IL-3	MCP-1/CCL2◆
IL-4◆	M-CSF
IL-5◆	MIG/CXCL9
IL-6◆	MIP-1α/CCL3◆
IL-7◆	MIP-1β/CCL4◆
IL-9◆	MIP-2/CXCL2◆
IL-10◆	RANTES/CCL5◆
IL-12 (p40)◆	TNFα◆
IL-12 (p70)◆	VEGF-A

Mouse Cytokine/
Chemokine Panel 2

- (Cat. No. MECY2MAG-73K)
- (Cat. No. MECY2MAG-73KPX)
- (Bulk Cat. No. MECY2MAG73KPBK)

Erythropoietin (EPO)	IL-17A/F
Exodus-2/ CCL21/6Ckine	IL-20
Fractalkine/CX3CL1	MCP-5/CCL12
IFNβ1	MDC/CCL22
IFNγ	MIP-3α/CCL20
IL-11	MIP-3β/CCL19
IL-16	TARC/CCL17
	TIMP-1

Mouse High Sensitivity T Cell

- (Cat. No. MHSTCMAG-70K)
- (Cat. No. MHSTCMAG-70KPMX)
- (Bulk Cat. No. MHSTCMAG-70KPBK)

GM-CSF	IL-10
IFNγ	IL-12 (p70)
IL-1α	IL-13
IL-1β	IL-17A/CTLA8
IL-2	KC/GRO/CINC-1/ CXCL1
IL-4	LIX
IL-5	MCP-1/CCL2
IL-6	MIP-2/CXCL2
IL-7	TNFα

Mouse Th17

- ⊙ (Cat. No. MTH17MAG-47K)
 25 (Cat. No. MT17MAG47K-PX25)
 25 (Bulk Cat. No. MT17MAG47PMX25BK)

sCD40L	IL-17E/IL-25
GM-CSF	IL-17F
IFN γ	IL-21
IL-1 β	IL-22
IL-2	IL-23
IL-4	IL-27
IL-5	IL-28B/IFN λ 3
IL-6	IL-31
IL-10	IL-33/NF-HEV (mature)
IL-12 (p70)	MIP-3a/CCL20
IL-13	TNF α
IL-15	TNF β /Lymphotoxin- α (LTA)
IL-17A/CTLA8	

Mouse CD8+ T Cell

- ⊙ (Cat. No. MCD8MAG-48K)
 15 (Cat. No. MCD8MAG48K-PX15)
 15 (Bulk Cat. No. MCD8MAG48KPX15BK)

sCD137/4-1BB/ TNFRSF9	IL-4
sFas/TNFRSF6	IL-5
sFasL	IL-6
GM-CSF	IL-10
Granzyme B	IL-13
IFN γ	MIP-1 β /CCL4
IL-2	RANTES/CCL5
	TNF α

Mouse Soluble Cytokine Receptor

- ⊙ (Cat. No. MSCRMAG-42K)

sCD30	sRAGE
sGP130	sTNF RI
sIL-1RI	sTNF RII
sIL-1RII	sVEGFR1/sFlt-1
sIL-2Ra	sVEGFR2/sKDR/sFlk-1
sIL-4R	sVEGFR3/sFlt-4
sIL-6R	

Mouse MMP Panel 1 (Serum/Plasma samples)

- (Cat. No. MMMP1MAG-79K)

MMP-2	MMP-8
MMP-3	

Mouse MMP Panel 2 (Serum/Plasma samples)

- (Cat. No. MMMP2MAG-79K)

proMMP-9	MMP-12
----------	--------

Mouse MMP Panel 3 (Cell culture samples)

- (Cat. No. MMMP3MAG-79K)

MMP-2	proMMP-9
MMP-3	MMP-12
MMP-8	

Multi-Species TGF β – Singleplex #

- (Cat. No. TGFBMAG-64K-01)
 (Bulk Cat. No. TGFBMAG-64K-01BK)

TGF β 1

Multi-Species TGF β – 3 Plex▼#

- (Cat. No. TGFBMAG-64K-03)

NON-CONFIGURABLE KIT

TGF β 1	TGF β 3
TGF β 2	

Immune Response**Mouse Immunoglobulin Isotyping**

- ⊙ (Cat. No. MGAMMAG-300K)

IgA	IgG2b
IgG1	IgG3
IgG2a	IgM

Mouse IgE – Singleplex

- (Cat. No. MGAMMAG-300E)

IgE

Metabolism/Endocrinology**Mouse Adipokine (Serum/Plasma samples)**

- (Cat. No. MADKMAG-71K)

IL-6	PAI-1 (total)
Insulin	Resistin
Leptin	TNF α
MCP-1/CCL2	

Mouse Adipocyte (Cell culture samples)

- (Cat. No. MADCYMAG-72K)

Adiponectin	PAI-1 (total)
IL-6	Resistin
Leptin	TNF α
MCP-1/CCL2	

Mouse Adiponectin – Singleplex (Serum/Plasma samples)

- (Cat. No. MADPNMAG-70K-01)

Adiponectin

Mouse Metabolic Hormone Expanded

- (Cat. No. MMHE-44K)

Amylin (active) ▶	Leptin
C-Peptide 2	MCP-1/CCL2
Ghrelin (active) ▶	Pancreatic Polypeptide (PP)
GIP (total)	PYY (total)
GLP-1 (active) †▶	Resistin
GLP-1 (total) †▶	Secretin
Glucagon ▶	TNF α
IL-6	
Insulin	

Mouse Myokine

- (Cat. No. MMYOMAG-74K)

BDNF	Irisin
Erythropoietin (EPO) ★	LIF
FGF-21	Myostatin/GDF8
Follistatin-like Protein 1 (FSTL1)	Oncostatin-M (OSM)
IL-6	Osteonectin (OSTN)/ Musclin
IL-15	Osteonectin/SPARC

Mouse Aging Panel 1

- (Cat. No. MAGE1MAG-25K)

CTACK/CCL27	Jag1
FGF-21	Leptin
GnRH	Notch1
IL-6	TNF α

Mouse Pituitary

- (Cat. No. MPTMAG-49K)

ACTH	LH
BDNF	Prolactin
FSH	TSH
GH	

Multi-Species Hormone ■ ^

- (Cat. No. MSHMAG-21K)

Cortisol	Testosterone
Estradiol	T3
Progesterone	T4

Legend key for MILLIPLEX® kits

- † Analytes which cannot be plexed together:
 – Active and total
 – Free and total
 ◆ Available in Cat. No. listed
 ▼ Premix panel only
 Bulk indicates Space Saver Packaging
 ▲ These analytes cannot be plexed with other analytes in this panel in serum/plasma

- ▶ Requires a protease inhibitor during sample collection
 ■ Requires sample extraction
 ** No standard/QC; antibody levels are reported as MFIs (Median Fluorescence Intensities)
 ● Serum/Plasma only
 ★ Tissue Culture samples only

- ^ Competitive assay format
 ⊙ Available for custom premix
 ◦ Analyte requires a different sample dilution from others in panel
 ⊖ Analyte cannot be measured in serum
 # Requires sample acidification
 § Analyte cannot be measured in plasma
 u Urine only

Cardiovascular

Mouse CVD Panel 1

(Cat. No. MCV1MAG-77K)

sCD31/sPECAM-1	ProMMP-9
sE-Selectin	sP-Selectin
sICAM-1	Thrombomodulin
PAI-1 (total)	

Mouse CVD Panel 2

(Cat. No. MCV2MAG-77K)

sCD40L	Oncostatin M (OSM)
CXCL16	Placental Growth Factor 2
Endocan-1 (ESM-1)	Troponin I (TnI)
Follistatin (FST)	Troponin T (TnT)
LIGHT	

Mouse Acute Phase Panel 2

(Cat. No. MAP2MAG-76K)

α-1-Acid Glycoprotein (AGP)	CRP
α-2-Macroglobulin	Haptoglobin
Adipsin/Factor D	Serum Amyloid P (SAP)

Bone

Mouse Bone

(Cat. No. MBNMAG-41K)

ACTH	Leptin
DKK1	Osteoprotegerin (OPG)
FGF-23	Sclerostin (SOST)
IL-6	TNFα
Insulin	

Cancer

Mouse Angiogenesis / Growth Factor Panel 1

(Cat. No. MAGPMAG-24K)

sALK-1	IL-6
Amphiregulin	IL-17A/CTLA8
Angiopoietin-2 ▲	KC/GRO/CINC-1/CXCL1
Betacellulin ▲	Leptin
sCD31/sPECAM-1 ▲	MCP-1/CCL2
EGF	MIP-1α/CCL3
Endoglin	Placental Growth Factor 2
Endothelin-1	Prolactin
sFasL	SDF-1/CXCL12
FGF-2/FGF-basic	TNFα
Follistatin (FST)	VEGF-A
G-CSF	VEGF-C
HGF	VEGF-D
IL-1β	

Mouse Immuno-Oncology Checkpoint Protein Panel 1

NEW

- ☐ (Cat. No. MCKP1-110K)
- 2B (Cat. No. MCKP1-110K-PX28)
- 2B (Bulk Cat No. MCKP1-110K-PBK28)

4-1BBL/TNFSF9	Galectin-1
5'-NT/CD73	Galectin-3
B7-H2/ICOSL	GITR
B7-H3/CD276	Granzyme B
BCA-1/CXCL-13	HVEM
BTLA	IFNγ
CD137/4-1BB	IL-10
CD226/DNAM-1	LAG-3
CD25/IL-2Rα	PD-1
CD27	PD-L1
CD40	PD-L2
CD80/B7-1	TIM-3
CTLA-4/CD152	TLR-2
E-Cadherin	TNFα

Neuroscience

Mouse Amyloid Beta

(Cat. No. MABMAG-83K)

Amyloid beta 1-40	Amyloid beta 1-42
-------------------	-------------------

Mouse Neuropeptide ■ ▲

(Cat. No. RMNPMAG-83K)

α-MSH	Oxytocin
β-Endorphin	Substance P
Neurotensin	

Toxicity

Mouse Kidney Injury Panel 1

(Cat. No. MKI1MAG-94K)

β-2-Microglobulin ^u	Renin
IP-10/CXCL10	TIMP-1
KIM-1	VEGF-A ^u

Mouse Kidney Injury Panel 2

(Cat. No. MKI2MAG-94K)

Clusterin	NGAL/Lipocalin-2
Cystatin C	Osteopontin (OPN)
EGF	

RAT

Immunology

Rat Cytokine/Chemokine

- ☐ (Cat. No. RECYTMAG-65K)
- 27 (Cat. No. RECYMAG65K27PMX)
- 27 (Bulk Cat. No. RECYMAG65PMX27BK)

EGF	IL-10
Eotaxin/CCL11	IL-12 (p70)
Fractalkine/CX3CL1	IL-13
G-CSF	IL-17A/CTLA8
GM-CSF	IL-18
KC/GRO/CINC-1/CXCL1	IP-10/CXCL10
IFNγ	Leptin
IL-1α	LIX
IL-1β	MCP-1/CCL2
IL-2	MIP-1α/CCL3
IL-4	MIP-2/CXCL2
IL-5	RANTES/CCL5
IL-6	TNFα
	VEGF

Multi-Species TGFβ – Singleplex

(Cat. No. TGFBMAG-64K-01)
(Bulk Cat. No. TGFBMAG-64K-01BK)

TGFβ1

Multi-Species TGFβ – 3 Plex ▼

(Cat. No. TGFBMAG-64K-03)

NON-CONFIGURABLE KIT

TGFβ1	TGFβ3
TGFβ2	

Metabolism/Endocrinology

Rat Adipokine (Serum/Plasma samples)

(Cat. No. RADPKMAG-80K)

IL-1β	MCP-1/CCL2
IL-6	PAI-1 (total)
Insulin	TNFα
Leptin	

Rat Adipocyte (Cell culture samples)

(Cat. No. RADPCMAG-82K)

Adiponectin	MCP-1/CCL2
IL-1β	PAI-1 (total)
IL-6	TNFα
Leptin	

Rat Metabolic Hormone

(Cat. No. RMHMAG-84K)

Amylin (active)†	Insulin
C-Peptide 2	Leptin
Ghrelin (active)†	MCP-1/CCL2
GIP (total)	Pancreatic Polypeptide (PP)
GLP-1 (active)†	PYY (total)
Glucagon†	TNFα
IL-6	

Rat Myokine

(Cat. No. RMYOMAG-88K)

BDNF	IL-15
Erythropoietin (EPO)	Irisin
FGF-21	LIF
Follistatin-like Protein 1 (FSTL1)	Myostatin/GDF8
Fractalkine/CX3CL1	Osteocrin (OSTN)/Musclin
IL-6	Osteonectin/SPARC

Rat Pituitary

(Cat. No. RPTMAG-86K)

ACTH	LH
BDNF	Prolactin
FSH	TSH
GH	

Rat Stress Hormone ■

(Cat. No. RSHMAG-69K)

ACTH	Melatonin^
Corticosterone^	

Multi-Species Hormone ■ ^

(Cat. No. MSHMAG-21K)

Cortisol	Testosterone
Estradiol	T3
Progesterone	T4

Rat Thyroid

(Cat. No. RTHYMAG-30K)

T3^	TSH
T4^	

Cardiovascular**Rat Cardiac Injury Panel 1**

(Cat. No. RCI1MAG-87K)

Cardiac Troponin I (cTnI)	FABP3
Cardiac Troponin T (cTnT)	Follistatin-like Protein 1 (FSTL1)
Creatine Kinase Muscle (CKM)	Myosin Light Chain 3 (MYL3)
	TIMP-1

Rat Vascular Injury Panel 1 (Serum/Plasma samples)

(Cat. No. RV1MAG-26K)

Caveolin-1	IL-6
Connective Tissue Growth Factor (CTGF)	MCP-1/ CCL2
PAI-1 (total)	PAI-1 (total)
TIMP-1	TIMP-1
TNFα	TNFα
VEGF	VEGF

Rat Vascular Injury Panel 2 (Serum/Plasma samples)

(Cat. No. RV2MAG-26K)

Adiponectin	sICAM-1
sE-Selectin	

Rat Vascular Injury Panel 3 (Serum/Plasma samples)

(Cat. No. RV3MAG-26K)

α-1-Acid Glycoprotein (AGP)	Haptoglobin
α-2-Macroglobulin (A2M)	

Bone**Rat Bone Panel 1 (Serum/Plasma samples)**

(Cat. No. RBN1MAG-31K)

ACTH	Leptin
DKK1	Osteoprotegerin (OPG)
FGF-23	PTH
Insulin	Sclerostin (SOST)

Neuroscience**Rat Neuropeptide** ■ ^

(Cat. No. RMNPMAG-83K)

α-MSH	Oxytocin
β-Endorphin	Substance P
Neurotensin	

Toxicity**Rat Kidney Toxicity Panel 1 (Urine samples)**

(Cat. No. RKT1MAG-37K)

Clusterin	Osteopontin (OPN)
GSTα^	TIMP-1
IP-10/CXCL10	VEGF-A
KIM-1	

Rat Kidney Toxicity Panel 2 (Urine samples)

(Cat. No. RKT2MAG-37K)

α-1-Acid Glycoprotein (AGP)	Cystatin C
Albumin^	EGF
β-2-Microglobulin	NGAL/Lipocalin-2

Rat Liver Injury

(Cat. No. RLI1MAG-92K)

5'NT/CD73	GSTα
ARG1	SDH
GOT1	

Legend key for MILLIPLEX® kits

† Analytes which cannot be plexed together:
– Active and total
– Free and total

◆ Available in Cat. No. listed

▼ Premix panel only

Bulk indicates Space Saver Packaging

▲ These analytes cannot be plexed with other analytes in this panel in serum/plasma

▶ Requires a protease inhibitor during sample collection

■ Requires sample extraction

** No standard/QC; antibody levels are reported as MFIs (Median Fluorescence Intensities)

● Serum/Plasma only

★ Tissue Culture samples only

^ Competitive assay format

Ⓞ Available for custom premix

◦ Analyte requires a different sample dilution from others in panel

Ⓢ Analyte cannot be measured in serum

Requires sample acidification

§ Analyte cannot be measured in plasma

u Urine only

OTHER SPECIES

Immunology

Bovine Cytokine/Chemokine Panel 1

- ☐ (Cat. No. BCYT1-33K)
- 15 (Cat. No. BCYT1-33K-PX15)
- 15 (Bulk Cat. No. BCYT1-33K-PXBK15)

IFN γ	IL-36RA/IL-1F5
IL-1 α	IP-10/CXCL10
IL-1 β	MCP-1/CCL2
IL-4	MIP-1 α /CCL3
IL-6	MIP-1 β /CCL4
IL-8/CXCL8	TNF α
IL-10	VEGF-A
IL-17A/CTLA8	

Canine Cytokine/Chemokine

- ☐ (Cat. No. CCYTOMAG-90K)
- 15 (Cat. No. CCYTMG-90K-PX13)
- 15 (Bulk Cat. No. CCYTOMAG90KPX13BK)

GM-CSF	IL-15
IFN γ	IL-18
IL-2	IP-10/CXCL10
IL-6	KC-like
IL-7	MCP-1/CCL2
IL-8/CXCL8	TNF α
IL-10	

Chicken Cytokine/Chemokine

- ☐ (Cat. No. GCYT1-16K)
- 12 (Cat. No. GCYT1-16K-PX12)
- 12 (Cat. No. GCYT1-16K-PXBK12)

IFN α	IL-21
IFN γ	M-CSF
IL-2	MIP-1 β /CCL4
IL-6	MIP-3 α /CCL20
IL-10	RANTES/CCL5
IL-16	VEGF

Equine Cytokine/Chemokine

- ☐ (Cat. No. EQCYTMAG-93K)
- 23 (Cat. No. EQCYTMG-93KPX23)
- 23 (Cat. No. EQCTMG93KPX23BK)

Eotaxin/CCL11	IL-6
FGF-2/FGF-basic	IL-8/CXCL8
Fractalkine/CX3CL1	IL-10
G-CSF	IL-12 (p70)
GM-CSF	IL-13
GRO	IL-17A/CTLA8
IFN γ	IL-18
IL-1 α	IP-10/CXCL10
IL-1 β	MCP-1/CCL2
IL-2	RANTES/CCL5
IL-4	TNF α
IL-5	

Feline Cytokine/Chemokine ▼

- 19 (Cat. No. FCYTMAG-20K-PMX)
- 19 (Bulk Cat. No. FCYTMAG20KPX19BK)
- NON-CONFIGURABLE KIT

sFAS/TNFRSF6	IL-13
Fit3 Ligand	IL-18
GM-CSF	KC/GRO/CINC-1/ CXCL1
IFN γ	MCP-1/CCL2
IL-1 β	PDGF-BB
IL-2	RANTES/CCL5
IL-4	SCF
IL-6	SDF-1/CXCL12
IL-8/CXCL8	TNF α
IL-12 (p40)	

Ovine Cytokine/Chemokine Panel 1

- ☐ (Cat. No. SCYT1-91K)
- 14 (Cat. No. SCYT-91K-PX14)
- 14 (Bulk Cat. No. SCYT-91K-PXBK14)

IFN γ	IL-17A/CTLA8
IL-1 α	IL-36RA/IL-1F5
IL-1 β	IP-10/CXCL10
IL-4	MIP-1 α /CCL3
IL-6	MIP-1 β /CCL4
IL-8/CXCL8	TNF α
IL-10	VEGF-A

Porcine Cytokine/Chemokine

- ☐ (Cat. No. PCYTMAG-23K)
- 15 (Cat. No. PCYTMG-23K-13PX)
- 15 (Bulk Cat. No. PCYTMAG23PMX13BK)

GM-CSF	IL-6
IFN γ	IL-8/CXCL8
IL-1 α	IL-10
IL-1 β	IL-12
IL-1Ra	IL-18
IL-2	TNF α
IL-4	

Multi-Species TGF β – Singleplex

- (Cat. No. TGFBMAG-64K-01)
- (Bulk Cat. No. TGFBMAG-64K-01BK)

TGF β 1

Multi-Species TGF β – 3 Plex ▼#

- (Cat. No. TGFBMAG-64K-03)

NON-CONFIGURABLE KIT	
TGF β 1	TGF β 3
TGF β 2	

Metabolism/Endocrinology

Canine Gut Hormone

- (Cat. No. CGTMAG-98K)

Amylin (total) †	Insulin
Ghrelin (active) †	Leptin
GIP (total)	Pancreatic Polypeptide (PP)
GLP-1 (active) †	PYY (total)
Glucagon	

Canine Pituitary Expanded Panel

- (Cat. No. CANPIT-96K)

ACTH	LH
FSH	Prolactin
GH	TSH

Multi-Species Hormone ■ ^

- (Cat. No. MSHMAG-21K)

Cortisol	Testosterone
Estradiol	T3
Progesterone	T4

Toxicity

Canine Kidney Toxicity Expanded Panel 1 (Urine samples)

- (Cat. No. CKT1MAG-97K)

Clusterin	MCP-1/CCL2
Cystatin C	NGAL/Lipocalin-2
IL-8/CXCL8	Osteopontin (OPN)
KIM-1	

Canine Kidney Toxicity Panel 2 (Urine samples)

- (Cat. No. CKT2MAG-97K)

Albumin	RBP4
β -2-Microglobulin	TFF-3

Legend key for MILLIPLEX® kits

- † Analytes which cannot be plexed together:
 - Active and total
 - Free and total
- ♦ Available in Cat. No. listed
- ▼ Premix panel only
- Bulk indicates Space Saver Packaging
- ▲ These analytes cannot be plexed with other analytes in this panel in serum/plasma

- ▶ Requires a protease inhibitor during sample collection
- Requires sample extraction
- ** No standard/QC; antibody levels are reported as MFIs (Median Fluorescence Intensities)
- Serum/Plasma only
- ★ Tissue Culture samples only

- ^ Competitive assay format
- ☐ Available for custom premix
- Analyte requires a different sample dilution from others in panel
- ⊙ Analyte cannot be measured in serum
- # Requires sample acidification
- ˆ Analyte cannot be measured in plasma
- u Urine only


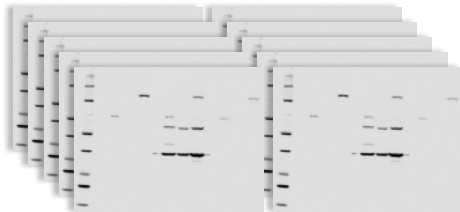
Cell Signaling MILLIPLEX® Assays

Uncover how your cells communicate

We offer three kit formats in our MILLIPLEX® Cell Signaling portfolio to meet your diverse needs:

1. Phosphoprotein or total protein (or mixed) multiplex assays (≥ 3 -plex)
2. Same protein phosphoprotein and total protein in the same assay (2-plex)
3. Singleplex MAPmate™ kits you can use as loading controls in multiplex kits

Our Cell Signaling multiplex kits give you the gift of time and sample, for example:

10 Proteins 12 Samples	MILLIPLEX® Assays	Western Blots
Number of 96-well plates or acrylamide gels		
Number of samples per plate or gel	12 (>40 samples can be measured in duplicate)	12
Total data points per plate or gel	120 (>400 data points can be measured per plate)	12
Total time to result	2.5 hours + overnight incubation (~18 hr)	Days/weeks
Amount of protein required (µg)	1-25 µg of total protein per well (all 10 proteins measured in same sample)	10-50 µg total protein per lane (100-500 µg total protein for 10 gels)

Akt/mTOR (Phosphoprotein) – 11 Plex

(Cat. No. 48-611MAG) AB2 ▼ **NON-CONFIGURABLE KIT**

Analyte	Total	Phosphorylated	
Akt/PKB	✓ (Ser473)	H, M, R	
GSK3α	✓ (Ser21)	H, M, R	
GSK3β	✓ (Ser9)	H, M, R	
IGF1R	✓ (Tyr1135/1136)	H, M	
IR	✓ (Tyr1162/1163)	H	
IRS1	✓ (Ser636)	H, M, R	
mTOR	✓ (Ser2448)	H, M, R	
p70S6 Kinase	✓ (Thr412)	H, M, R	
PTEN	✓ (Ser380)	H, M, R	
RPS6	✓ (Ser235/236)	H, M, R	
TSC2	✓ (Ser939)	H, M, R	

Akt/mTOR (Total) – 11 Plex

(Cat. No. 48-612MAG) AB2 ▼ **NON-CONFIGURABLE KIT**

Analyte	Total	Phosphorylated	
Akt/PKB	✓	H, M, R	
GSK3α	✓	H, M, R	
GSK3β	✓	H, M, R	
IGF1R	✓	H, M, R	
IR	✓	H, R	
IRS1	✓	H, M, R	
mTOR	✓	H, M, R	
p70S6 Kinase	✓	H, M, R	
PTEN	✓	H, M, R	
RPS6	✓	H, M, R	
TSC2	✓	H, M, R	

- Can be plexed with other 2 Plexes
- * Cannot plex with other phospho Akt
- ▼ Premix panel only

AB1: Uses Assay Buffer 1
AB2: Uses Assay Buffer 2

H Human
M Mouse
R Rat

Early Apoptosis – 7 Plex(Cat. No. 48-669MAG) AB2 ▼ **NON-CONFIGURABLE KIT**

Analyte	Total	Phosphorylated	
Akt/PKB		✓ (Ser473)	H, M, R
BAD		✓ (Ser112)	H, M
Bcl-2		✓ (Ser70)	H
Active Caspase-8 (Asp384)	✓		H
Active Caspase-9 (Asp315)	✓		H
JNK/SAPK1		✓ (Thr183/Tyr185)	H, M, R
p53		✓ (Ser46)	H

Human Bcl-2 Family Apoptosis Panel 1 - 6 Plex(Cat. No. 48-682MAG) AB1 ▼ **NON-CONFIGURABLE KIT**

Analyte	Total	Phosphorylated	
BAD	✓	✓ (Ser112)	H
BAX	✓		H
Bcl-xL/BAD (interaction)	✓		H
BIM	✓		H
Mcl-1/BIM (interaction)	✓		H

Human Bcl-2 Family Apoptosis Panel 2 - 4 Plex(Cat. No. 48-683MAG) AB1 ▼ **NON-CONFIGURABLE KIT**

Analyte	Total	Phosphorylated	
Bcl-2	✓		H
Bcl-xL	✓		H
Mcl-1	✓		H
NOXA/Mcl-1 (interaction)	✓		H

Human DNA Damage/Genotoxicity – 7 Plex(Cat. No. 48-621MAG) AB1 ▼ **NON-CONFIGURABLE KIT**

Analyte	Total	Phosphorylated	
ATR	✓		H
Chk1		✓ (Ser345)	H, M, R
Chk2		✓ (Thr68)	H
H2A.X		✓ (Ser139)	H, M, R
MDM2	✓		H, M, R
p21	✓		H
p53		✓ (Ser15)	H

MAPK/SAPK (Phosphoprotein) – 10 Plex(Cat. No. 48-660MAG) AB2 ▼ **NON-CONFIGURABLE KIT**

Analyte	Total	Phosphorylated	
ATF2		✓ (Thr71)	H, M
c-Jun		✓ (Ser73)	H, M, R
Erk/MAPK 1/2		✓ (Thr185/Tyr187)	H, M, R
HSP27		✓ (Ser78)	H
JNK/SAPK1		✓ (Thr183/Tyr185)	H, M, R
MEK1		✓ (Ser222)	H, M, R
MSK1		✓ (Ser212)	H, M
p38/SAPK2A/B		✓ (Thr180/Tyr182)	H, M, R
p53		✓ (Ser15)	H
STAT1		✓ (Tyr701)	H, M

Human RTK (Phosphoprotein)**(Choose analytes that meet your needs)**

(Cat. No. HPRTKMAG-01K) AB1

Analyte	Total	Phosphorylated	
c-Kit		(pan Tyr)	H
c-Met/HGFR		(pan Tyr)	H
ErbB1/EGFR		(pan Tyr)	H
ErbB2/HER2		(pan Tyr)	H
ErbB3/HER3		(pan Tyr)	H
ErbB4/HER4		(pan Tyr)	H
FGFR1		(pan Tyr)	H
Flt3		(pan Tyr)	H
IGF1R		(pan Tyr)	H
IR		(pan Tyr)	H
M-CSFR		(pan Tyr)	H
PDGFRα		(pan Tyr)	H, M, R
PDGFRβ		(pan Tyr)	H
TIE1		(pan Tyr)	H
TIE2		(pan Tyr)	H
VEGFR1/Flt-1		(pan Tyr)	H
VEGFR2/KDR/Flk-1		(pan Tyr)	H
VEGFR3/Flt-4		(pan Tyr)	H, M, R

Multi-Pathway (Phosphoprotein) – 9 Plex(Cat. No. 48-680MAG) AB2 ▼ **NON-CONFIGURABLE KIT**

Analyte	Total	Phosphorylated	
Akt/PKB		✓ (Ser473)	H, M, R
CREB		✓ (Ser133)	H, M, R
Erk/MAPK 1/2		✓ (Thr185/Tyr187)	H, M, R
JNK/SAPK1		✓ (Thr183/Tyr185)	H, M, R
NFκB		✓ (Ser536)	H, M, R
p38/SAPK2A/B		✓ (Thr180/Tyr182)	H, M, R
p70S6 Kinase		✓ (Thr412)	H, M, R
STAT3		✓ (Ser727)	H, M, R
STAT5A/B		✓ (Tyr694/699)	H, M, R

Multi-Pathway (Total) – 9 Plex(Cat. No. 48-681MAG) AB2 ▼ **NON-CONFIGURABLE KIT**

Analyte	Total	Phosphorylated	
Akt/PKB	✓		H, M, R
CREB	✓		H, M, R
Erk/MAPK 1/2	✓		H, M, R
JNK/SAPK1	✓		H, M, R
NFκB	✓		H, M, R
p38/SAPK2A/B	✓		H, M, R
p70S6 Kinase	✓		H, M, R
STAT3	✓		H, M, R
STAT5A/B	✓		H, M, R

NFκB — 6 Plex(Cat. No. 48-630MAG) AB1 ▼ **NON-CONFIGURABLE KIT**

Analyte	Total	Phosphorylated	
c-Myc	✓		H
FADD		✓ (Ser194)	H
IκBα		✓ (Ser32)	H
IKKα/β		✓ (Ser177/181)	H
NFκB		✓ (Ser536)	H, M
TNFR1	✓		H

Protein Translation — 6 Plex(Cat. No. 48-655MAG) AB2 ▼ **NON-CONFIGURABLE KIT**

Analyte	Total	Phosphorylated	
eIF2a		✓ (Ser51)	H, M, R
eIF-4B		✓ (Ser422)	H, M, R
eIF-4E		✓ (Ser209)	H, M, R
eIF-4G		✓ (Ser1108)	H, M, R
4E-BP1	✓	✓ (Thr37/46)	H, M, R

Human Ras-Raf Oncoprotein — 6 Plex(Cat. No. 48-684MAG) AB2 ▼ **NON-CONFIGURABLE KIT** **NEW**

Analyte	Total	Phosphorylated	
BRAF		✓ (Ser446)	H, M, R
CRAF		✓ (Ser338)	H, M, R
MEK1		✓ (Ser217/221)	H, M, R
Ras	✓		H, M, R
RasG12D	✓		H
RasG12V	✓		H

Src Family Kinase Active Site (Phosphoprotein) — 8 Plex(Cat. No. 48-650MAG) AB2 ▼ **NON-CONFIGURABLE KIT**

Analyte	Total	Phosphorylated	
Blk		✓ (Tyr389)	H
Fgr		✓ (Tyr412)	H, R
Fyn		✓ (Tyr420)	H, M, R
Hck		✓ (Tyr411)	H, M
Lck		✓ (Tyr394)	H, M, R
Lyn		✓ (Tyr397)	H, R
Src		✓ (Tyr419)	H, M, R
Yes		✓ (Tyr421)	H, M, R

STAT (Phosphoprotein) — 5 Plex(Cat. No. 48-610MAG) AB2 ▼ **NON-CONFIGURABLE KIT**

Analyte	Total	Phosphorylated	
STAT1		✓ (Tyr701)	H, M
STAT2		✓ (Tyr690)	H
STAT3		✓ (Tyr705)	H, M, R
STAT5A/B		✓ (Tyr694/699)	H, M, R
STAT6		✓ (Tyr641)	H

T-Cell Receptor (Phosphoprotein) — 7 Plex(Cat. No. 48-690MAG) AB2 ▼ **NON-CONFIGURABLE KIT**

Analyte	Total	Phosphorylated	
CD3ε		✓ (pan Tyr)	H
CREB		✓ (Ser133)	H, M, R
Erk/MAPK 1/2		✓ (Thr185/Tyr187)	H, M, R
LAT		✓ (pan Tyr)	H
Lck		✓ (pan Tyr)	H, M, R
Syk		✓ (pan Tyr)	H
ZAP-70		✓ (pan Tyr)	H

TGFβ — 6 Plex(Cat. No. 48-614MAG) AB2 ▼ **NON-CONFIGURABLE KIT**

Analyte	Total	Phosphorylated	
Akt/PKB		✓ (Ser473)	H, M, R
Erk/MAPK 1/2		✓ (Thr185/Tyr187)	H, M, R
SMAD2		✓ (Ser465/467)	H, M, R
SMAD3		✓ (Ser423/425)	H, M, R
SMAD4	✓		H, M, R
TGFβRII	✓		H

Akt Phospho/Total — 2 Plex(Cat. No. 48-618MAG) AB2 ▼ * ●● **NON-CONFIGURABLE KIT**

Analyte	Total	Phosphorylated	
Akt/PKB		✓ (Ser473)	H, M, R
Akt/PKB	✓		H, M, R

Akt1 Phospho/Total — 2 Plex(Cat. No. 48-631MAG) AB2 ▼ * ●● **NON-CONFIGURABLE KIT**

Analyte	Total	Phosphorylated	
Akt1		(Ser473)	H, M, R
Akt1	✓		H, M, R

Learn more about Cancer and Metastasis Signaling Pathways

Download our **Wall Chart** for more information about kits to elucidate your research!

Akt2 Phospho/Total – 2 Plex(Cat. No. 48-632MAG) AB2 ▼ * ●● **NON-CONFIGURABLE KIT**

Analyte	Total	Phosphorylated	
Akt2		(Ser474)	H, M, R
Akt2	✓		H, M, R

Akt3 Phospho/Total – 2 Plex(Cat. No. 48-633MAG) AB2 ▼ * ●● **NON-CONFIGURABLE KIT**

Analyte	Total	Phosphorylated	
Akt3		(Ser472)	H, M, R
Akt3	✓		H, M, R

CREB Phospho/Total – 2 Plex(Cat. No. 48-628MAG) AB2 ▼ ●● **NON-CONFIGURABLE KIT**

Analyte	Total	Phosphorylated	
CREB		✓ (Ser133)	H, M, R
CREB	✓		H, M, R

Erk/MAPK 1/2 Phospho/Total – 2 Plex(Cat. No. 48-619MAG) AB2 ▼ ●● **NON-CONFIGURABLE KIT**

Analyte	Total	Phosphorylated	
Erk/MAPK 1/2		✓ (Thr185/Tyr187)	H, M, R
Erk/MAPK 1/2	✓		H, M, R

IRS1 Phospho/Total – 2 Plex(Cat. No. 48-626MAG) AB2 ▼ ●● **NON-CONFIGURABLE KIT**

Analyte	Total	Phosphorylated	
IRS1		✓ (Ser636)	H, M
IRS1	✓		H, M, R

JNK Phospho/Total – 2 Plex(Cat. No. 48-622MAG) AB2 ▼ ●● **NON-CONFIGURABLE KIT**

Analyte	Total	Phosphorylated	
JNK/SAPK1		✓ (Thr183/Tyr185)	H, M, R
JNK/SAPK1	✓		H, M, R

mTOR Phospho/Total – 2 Plex(Cat. No. 48-625MAG) AB2 ▼ ●● **NON-CONFIGURABLE KIT**

Analyte	Total	Phosphorylated	
mTOR		✓ (Ser2448)	H, M, R
mTOR	✓		H, M

p38 Phospho/Total – 2 Plex(Cat. No. 48-624MAG) AB1 or AB2 ▼ ●● **NON-CONFIGURABLE KIT**

Analyte	Total	Phosphorylated	
p38/SAPK2A/B		✓ (Thr180/Tyr182)	H, M, R
p38/SAPK2A/B	✓		H, M, R

STAT3 Phospho/Total – 2 Plex(Cat. No. 48-623MAG) AB2 ▼ ●● **NON-CONFIGURABLE KIT**

Analyte	Total	Phosphorylated	
STAT3		✓ (Tyr705)	H, M, R
STAT3	✓		H, M, R

MAPmate™ Singleplex Loading Control Assays

Plex loading control MAPmate™ assays into existing MILLIPLEX® Cell Signaling Panels to enhance the panel within the guidelines provided in the protocols. Our Cell Signaling Buffer and Detection Kit (**Cat. No. 48-602MAG**), may be purchased if additional buffers are required.

Our custom immunoassay team can assist with differently configured cell signaling assays. For more information on this program, contact your sales specialist.

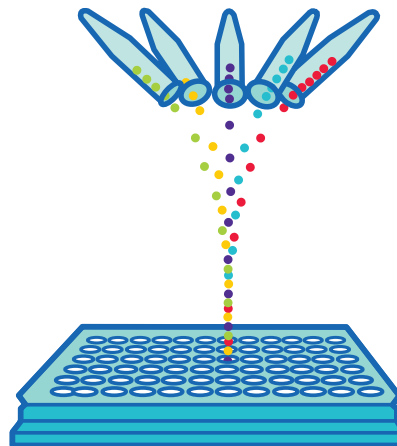
MAPmate™ Kits	Species Homology (Buffer)	Cat. No.
β-Tubulin (total)	H, M, R (AB1 & AB2)	46-713MAG
GAPDH (total)	H (AB2)	46-667MAG

●●	Can be plexed with other 2 Plexes	AB1: Uses Assay Buffer 1	H Human
*	Cannot plex with other phospho Akt	AB2: Uses Assay Buffer 2	M Mouse
▼	Premix panel only		R Rat

Custom MILLIPLEX® Assay Development

Accelerate your research with Custom MILLIPLEX® and ELISA assays designed for your specific biomarker needs.

- Develop new analytes
- Multiplex new analytes with existing analytes
- Recombine existing analytes into new panels
- Convert existing assays to 384-well format
- Design and verify assays for your samples
- Kit bridging for lot-to-lot consistency
- Custom kit reagents and formatting



STEP 1

Visit either link on this page and “Request Information”; fill in your contact information along with the analyte full protein names, species, and samples types; submit your request

STEP 2

Receive work plan and quotation from sales specialist

STEP 3

Place purchase order and participate in project kickoff call



Get started today!

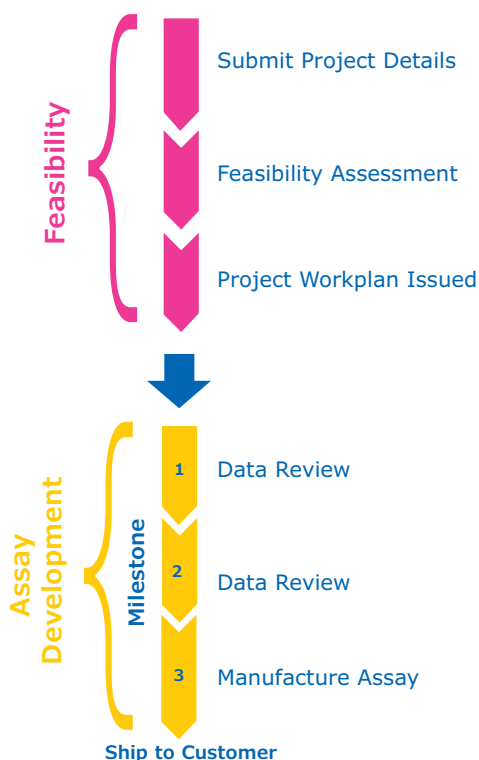
Download our new custom menu of services brochure for a complete listing of services at SigmaAldrich.com/customassay

Custom Assay Project Workflow

SPR (Special Product Release): Leverage our knowledge base of pre-verified analyte/panel combinations. Select analytes from up to three panels and we will assess the combination feasibility.

SPRCUS (Special Product Release – Custom): For more complex analyte and panel combinations, or for those which have not been pre-verified, we base feasibility upon compatible sample dilution, matrix, sample preparation requirements, and known analyte cross-reactivity. Once ordered, and prior to kit release, we test cross-reactivity of antibodies to other analytes in the same custom panel and optimize the final assay and protocol. Should a combination fail testing, we will provide you with alternate assay options.

Develop a new MILLIPLEX® or ELISA assay which is fit for your purpose. We follow a milestone-based approach to generate an assay that quantifies your exact proteins of interest. All MILLIPLEX® assays are optimized to run on any Luminex® instrument. You will receive updates and data reviews during each milestone, offering you peace of mind that your project is on schedule and meeting specifications.



Custom MILLIPLEX® Analytes

Analyte	Species (Sample Types)
α-1 Antichymotrypsin	H (S/P)
α-2 Antiplasmin	H (S/P)
AGP (α 1-Acid Glycoprotein)	H (U)
Akt/PKB (Ser473)	H, M, R (Lys)**
Akt/PKB (total)	H, M, R (Lys)**
Angiopoetin-1	H (S/P, T)
Anti-Cardiolipin antibody IgA	H (S/P)
Anti-EBV VCA IgG	H (S/P)
Anti-Phosphatidylserine IgG, IgM	H (S/P)
Apolipoprotein A-IV	H (S/P)
Arginase 1	M (S/P)
AXL (s)	M, R (S/P)
BAD (Ser112)	H, M (Lys)**
BCMA (B-cell Maturation Antigen)	H (S/P)
BMP-9	M, R (S/P)
BRD4	H, M, R (Lys)
Caspase 3 (Active)	H, M (Lys)**
CBP	H, M, R (Lys)
CD13 Aminopeptidase N	H (S/P)
CD163 (s)	H (S/P)
Ceruloplasmin	H (U)
Cleaved PARP (total)	H (Lys)**
CSTB (Cystatin B)	H (S/P)
Elafin	H (S/P)
ERK/MAPK 1/2 (Thr185/Tyr187)	H, M, R (Lys)**
ERK/MAPK 1/2 (total)	H, M, R (Lys)**
Fibronectin	H (S/P)
G3BP (Galectin 3 Binding Protein)	H (U)
Gas-6	H, M, R (S/P)
Granzyme A	M (S/P)
Gremlin	M, R (S/P)
GRP78	H (S/P)
HGFR/cMET	M, R (S/P)
I-FABP	H (S/P)

Analyte	Species (Sample Types)
IGF-1	M, R (S/P)
IL-18	M, R (S/P)
IL-33R/ST2 (Suppressor of Tumorigenicity 2)	H (S/P)
JNK/SAPK1 (Thr183/Tyr185)	H, M (Lys)**
JNK/SAPK1 (total)	H, M (Lys)**
LPGDS (Lipocalin like prostaglandin D synthase)	H (U)
Lysozyme C	H (S/P)
MIP-1γ	M, R (S/P)
MR-proADM	H (S/P)
mTOR (Ser2448)	H, M, R (Lys)**
mTOR (total)	H, M, R (Lys)**
p300	H, M, R (Lys)
p38/SAPK2A/B (Thr180/Tyr182)	H, M, R (Lys)**
p38/SAPK2A/B (total)	H, M, R (Lys)**
Periostin	M, R (S/P)
PODXL	M, R (S/P)
Prealbumin (Transthyretin)	H (S/P)
Procalcitonin	H, M, R (S/P)
Prostaglandin D Synthase (lipocalin-type)	H (S/P, CSF, Sup)
Semaphorin 3A	H (Sup)
STAT1 (total)	H, M (Lys)**
STAT1 (Tyr701)	H, M (Lys)**
Tenascin C	M, R (S/P)
Thyroxine Binding Globulin	H (S/P)
TRAIL	M, R (S/P)
Transferrin	H (U)
Vasopressin	M, R (P)
VE Cadherin/Cadherin 5	H (S/P)
Vitronectin	M, R (S/P)
Wnt-3a	H (S/P, Sup, Lys)
Zinc-α-2 Glycoprotein	H (S/P)

Species Key

H Human
M Mouse
R Rat

Sample Type Key

CSF Cerebral Spinal Fluid
Lys Cell/Tissue Lysates
Mul Multiple Types
S/P Serum/Plasma
Sup Cell/Tissue Culture Supernatants
T Tears
U Urine

Notations

s Soluble analyte
****** No standard/QC; levels reported as MFIs (Median Fluorescence Intensities)

Multiplexed Biomarker Analysis Using Luminex® Systems

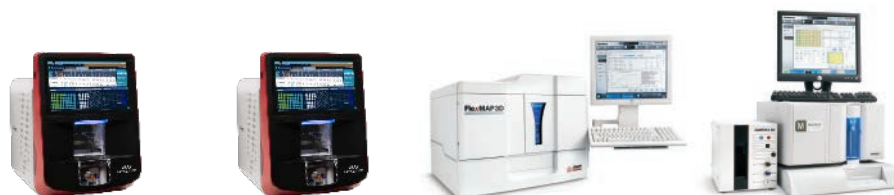
Driving Assay Consistency

Enhance your data generation with our Luminex® instrument solutions. Combined with the largest portfolio of multiplex analytes available, we provide you the power of Luminex® xMAP® technology, the most trusted, widely used platform for biomarker screening and protein

analysis. As a Luminex® partner, we are a preferred distributor of Luminex® instruments, accessories, and software. Our ongoing dedication and industry-leading experience with multiplex technology enable you to gain more information quickly and reliably.

Luminex® xMAP® technology offers many advantages compared to other immunoassay methods:

- **Multiplexing:** Data generated simultaneously is less prone to user error, enabling the end-user to construct cleaner data sets to explore multiple parameters.
- **Low sample volume:** With minimal hands-on time, screen more than 40 analytes in a single sample using a maximum of 25 µL per well.
- **Magnetic bead-based format:** Responds rapidly and efficiently to a magnetic field, enabling better and faster washing techniques, including high-throughput washing options.
- **Reproducibility:** High-volume production of xMAP® microspheres allows assay standardization that solid-phased flat arrays cannot provide.
- **Speed/high-throughput:** Simultaneously measure the concentration of a large number of different analytes in a single sample, in 96- or 384-well format, enabling you to do your work faster, gaining the early and comprehensive data so critical to your work.



Specifications

Instruments	xMAP® INTELLIFLEX DR-SE*	xMAP® INTELLIFLEX RU0	FLEXMAP 3D®	Luminex® 200™
Cat. No.	INTELLIFLEX-DRSE	INTELLIFLEX-RU0	40-014	40-012
Optics Hardware	Lasers/APDs/PMTs	Lasers/APDs/PMTs	Lasers/APDs/PMTs	Lasers/APDs/PMTs
Technology	Flow-based	Flow-based	Flow-based	Flow-based
Multiplexing	Up to 500	Up to 500	Up to 500	Up to 100 (80 on MagPlex® microspheres)
Dynamic Range**	≥5.5 logs (RP1) ≥4.5 logs (RP2)	≥5.5 logs (RP1)	≥4.5 logs (RP1)	≥3.5 logs (RP1)
Read Time	96-well in ~20 min 384-well in ~75 min	96-well in ~20 min 384-well in ~75 min	96-well in ~20 min 384-well in ~75 min	96-well in ~45 min
Applications	Protein/nucleic acid	Protein/nucleic acid	Protein/nucleic acid	Protein/nucleic acid
Automation-Compatible Hardware	Front and side eject	Front eject only	Front eject only	Front eject only
Reporter Laser	532 nm (green) 405 nm (violet)	532 nm (green)	532 nm (green)	532 nm (green)
IQ/OQ	Yes	Yes	Yes	Yes
21 CFR Compliance	Yes	Yes	Yes	Yes
Automation	Yes	Yes	Yes	Yes
Data Analysis	Belysa® software	Belysa® software	xPONENT® basic + Belysa® software	xPONENT® basic + Belysa® software
Plate Format	96-well and 384-well	96-well and 384-well	96-well and 384-well	96-well
Footprint (Linear Bench Space, including PC)	58.4 cm x 61 cm x 6.2 cm	58.4 cm x 61 cm x 76.2 cm	110 cm x 62 cm x 63 cm	115 cm x 60 cm x 50 cm
Weight	54.4 kg (120 lbs)	54.4 kg (120 lbs)	77.1 kg (170 lbs)	49 kg (113 lbs)

*DR-SE = dual reporter side eject; **RP = reporter

Luminex® 200™ and FLEXMAP 3D® systems run on the Luminex® xPONENT® 4.3 data acquisition platform; the xMAP® INTELLIFLEX systems run on INTELLIFLEX 1.0. All systems provide a consistent experience, from data input to results, no matter which instrument a scientist uses for their research. All software adapts to fit the capabilities of each platform.

Instrument and Kit Service

We also supply full service at point of sale and throughout your research. Multi-level service contracts provide coverage from Luminex® engineers tailored to the use of your new instrument. Our staff can help you install the instrument, train you to use your platform, and continue to supply you with the appropriate reagents to run it as required.

Service Contracts and Consumables

Luminex® System 1 Year Warranty Plans	Unlimited Remote Support	Unlimited Emergency Repair	1 (PM)	2 (PM)	Cat. No.
FLEXMAP 3D®, Bronze	•		•		SVCLUMBRZFM3D
FLEXMAP 3D®, Silver	•	○	•		SVCLUMSLVFM3D
FLEXMAP 3D®, Gold	•	○	•		SVCLUMGLDFM3D
FLEXMAP 3D®, Gold 360*	•	○	•		SVCLUMGLD360FM3D
FLEXMAP 3D®, Platinum	•	●		•	SVCLUMPLTFM3D
FLEXMAP 3D®, Platinum 360*	•	●		•	SVCLUMPLT360FM3D
Luminex® 200™, Bronze	•		•		SVCLUMBRZ
Luminex® 200™, Silver	•	○	•		SVCLUMSLV
Luminex® 200™, Gold	•	○	•		SVCLUMGLD
Luminex® 200™, Gold 360*	•	○	•		SVCLUMGLD360
Luminex® 200™, Platinum	•	●		•	SVCLUMPLT
Luminex® 200™, Platinum 360*	•	●		•	SVCLUMPLT360
MAGPIX®, Standard	•	○			SVCLUMGLDMAGPIX
MAGPIX®, Gold	•	○	•		SVCMAGPIXGOLDPM
MAGPIX®, Platinum	•	●		•	SVCMAGPIXPLATPM
INTELLIFLEX RUO, Gold	•	○	•		IFLEX-GOLD
INTELLIFLEX RUO, Platinum	•	●		•	IFLEX-PLATINUM
INTELLIFLEX DR-SE, Gold	•	○	•		IFLEX-DRSE-GOLD
INTELLIFLEX DR-SE, Platinum	•	●		•	IFLEX-DRSE-PLAT

● Onsite 1-business day response ○ Onsite 2-business days response

1 (PM) = includes 1 preventive maintenance 2 (PM) = includes 2 preventive maintenances

* 360 service includes on-site support for assays developed by Luminex® technology only

Instrument and Kit Consumables and Training

Consumables

Description	Pack Size	Cat. No.
MAGPIX® Drive Fluid PLUS (RUO)	4 pack, 750 mL ea	40-50030
xMAP® Sheath Fluid PLUS (RUO)	20 L	40-50021
xMAP® Sheath Concentrate PLUS (RUO)	1 L	40-50023
MAGPIX® Calibration Kit	25 uses	MPX-CAL-K25
MAGPIX® Performance Verification Kit	25 uses	MPX-PVER-K25
Luminex® 200™ Calibration Kit (xPONENT®)	25 uses	LX2R-CAL-K25
Luminex® 200™ Performance Verification Kit (xPONENT®)	25 uses	LX2R-PVER-K25
FLEXMAP 3D® Calibration Kit	25 uses	F3D-CAL-K25
FLEXMAP 3D® Performance Verification Kit	25 uses	F3D-PVER-K25
xMAP® INTELLIFLEX Calibration Kit NEW	20 uses	IFX-CAL-K20
xMAP® INTELLIFLEX Verification Kit NEW	20 uses	IFX-PVER-K20

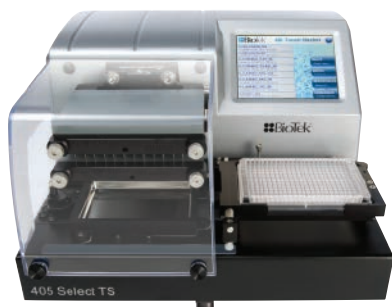
Training/IQ/OQ

Description	Cat. No.
MAGPIX® System Onsite Installation and Training	TRONSITE-MAGPIX
MAGPIX® IQ/OQ	VP-MAGPIX-XP0N-IQ0Q
Luminex® 200™ System Onsite Installation and Training	TRONSITE-LX200
Luminex® 200™ IQ/OQ	VP-LX-XP0N-IQ0Q
FLEXMAP 3D® System Onsite Installation and Training	TRONSITE-FM3D
FLEXMAP 3D® IQ/OQ	VP-FM3D-XP0N-IQ0Q
BioTek® Washer Onsite Installation and Training	TRONSITE-BIOTEK
MILLIPLEX® Kits Training	TRONSITE-MPX
xMAP® INTELLIFLEX IQ/OQ	VP-IFLEX-IQ0Q
xMAP® INTELLIFLEX OQ	VP-IFLEX-OQ
xMAP® INTELLIFLEX System Onsite Installation and Training	TRONSITE-IFLEX



BioTek® Washing & Dispensing Solutions for MILLIPLEX® Assays

In partnership with BioTek® instruments, we offer the latest advancements in fully automated magnetic separation for 96- and 384-well plate washing systems. The MultiFlo™ FX dispenser allows users to dispense kit reagents, ensuring excellent assay reproducibility.



BioTek® 405™ Select TS (touch screen) Washer

BioTek® washer advantages:

- Fast and hands-free full plate washing
- The BioTek® 405™ TS models in 96- and 384-well options include an intuitive touch-screen user interface and the Ultrasonic Advantage™ cleaning program for easy washing of the toughest sample types

Description	Cat. No.
BioTek® 405™ LS Magnetic 96-Well Washer	40-094
BioTek® 405™ LS Magnetic/Vacuum Filtration 96-Well Washer	40-095
BioTek® 405™ TS Magnetic 96-Well Washer Complete with Touch Screen and Ultrasonic Cleaning	40-096
BioTek® 405™ TS Magnetic/Vacuum Filtration 96-Well Washer Complete with Touch Screen and Ultrasonic Cleaning	40-097

BioTek® MultiFlo™ FX Automated Reagent Dispenser

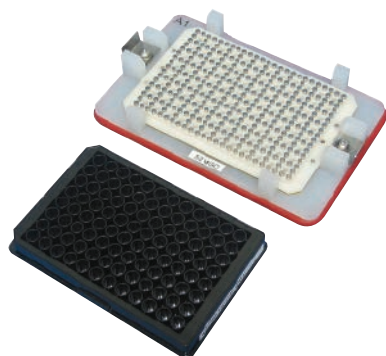


The perfect instrument for MILLIPLEX® 384-well assays

- Fully automated process, just load your standards, quality controls, and samples, and walk away
- Optimized for both 384- and 96-well plates
- The performance of a larger robot for a fraction of the cost
- Self-contained, programmable reagent dispenser enables precise liquid delivery

Description	Cat. No.
BioTek® MultiFlo™ FX Automated Reagent Dispenser	40-099

Handheld Magnetic Separator Block for 96-Well Flat Bottom or Conical Well Plates



A low-cost alternative to automated plate washers without loss of assay performance. Simply decant or “flick” the liquid contents and blot the remainder on a paper towel. Magnetic beads are securely held in the wells by the block magnets.

Description	Cat. No.
Handheld Magnetic Separator Block for 96-Well Flat Bottom or Conical Well Plates	40-285

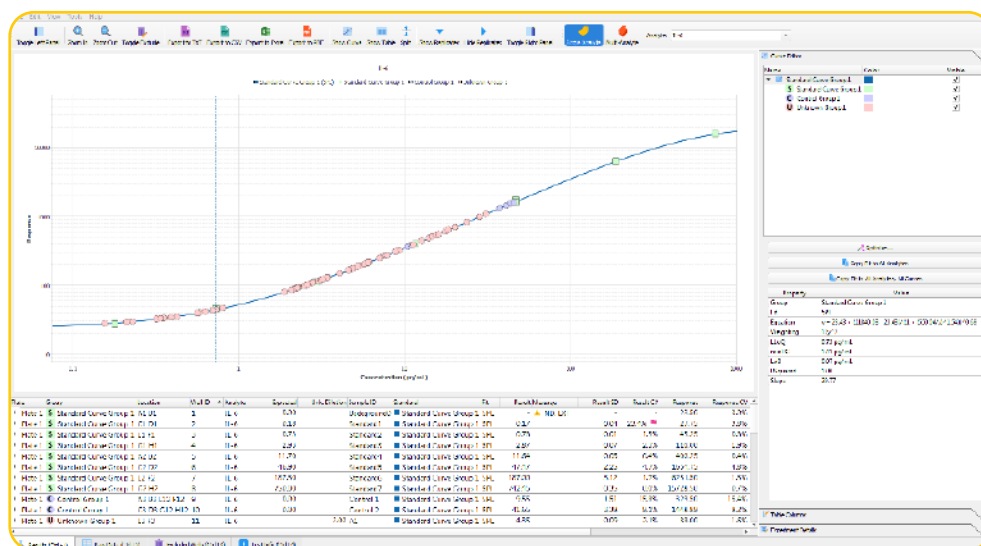
Belysa® Immunoassay Curve Fitting Software

(Cat. No. 40-122)

Our newest proprietary software package for curve fitting, examination, and comparison of data acquired from a variety of immunoassay platforms. Belysa® software has been designed to provide an easy-to-use tool to optimize curve fit and confirm the integrity of data within a plate or across plates from multiple runs.

Belysa® Software Key Features and Benefits

- User-friendly interface
- Automatic and manual curve fitting (4pl, 5pl, linear, cubic spline)
- Curve comparison tools
- Rules-based data flagging
- Suitable for use with RUO Luminex® instruments, SMCxPRO™ platform, and ELISA .csv acquisition files
- Windows® 7/10 compatible



Example 1. Belysa® standard curve and data analysis: IL-6 MILLIPLEX® assay from a Luminex® xPONENT®.csv output file

As shown in Example 1, a .csv output file is simply drag-and-dropped into the Belysa® browser for instant data review.

Once the user selects the curve fit model, either automatically by using the wizard, or manually, the data are displayed:

- Sample concentrations
- Recovery of standards
- Equation of line
- Limit of Detection (LOD)
- Lower Limit of Quantitation (LLOQ)
- Minimum Detectable Dose (MD)
- Data is exportable to: Excel, .csv, .txt, and .pdf



Data Autoflagging

Message	Result SD	Result CV	Response	Response CV
▲ EXT, ND	-	-	15.75	2.2%
▲ BLOQ	0.03	3.6%	35.50	2.0%
▲ BLOQ	0.08	10.4%	32.75	5.4%
▲ BLOQ	0.13	16.4%	33.00	8.6%
▲ BLOQ	0.03	6.0%	27.50	2.6%
▲ BLOQ	0.03	3.8%	34.50	2.0%
▲ BLOQ	0.03	4.2%	32.50	2.2%
▲ BLOQ	0.03	3.4%	36.50	1.9%
▲ BLOQ	0.18	25.9%	30.75	12.6%
▲ BLOQ	0.00	0.0%	23.00	0.0%
▲ BLOQ	0.05	13.3%	23.75	4.5%
▲ BLOQ	0.06	27.1%	21.00	6.7%
▲ BLOQ	0.03	10.5%	22.50	3.1%
▲ BLOQ	0.10	10.7%	35.50	6.0%

As shown in Example 2, Belysa® software annotates data for hard rules such as below the limit of quantitation (BLOQ) using a yellow triangle. The user may define parameters such as acceptable %CV or bead counts which creates a pink flag next to the raw data that does not meet the user’s acceptance criteria. Then, a decision can be made to exclude points which will then be recorded if required for review.

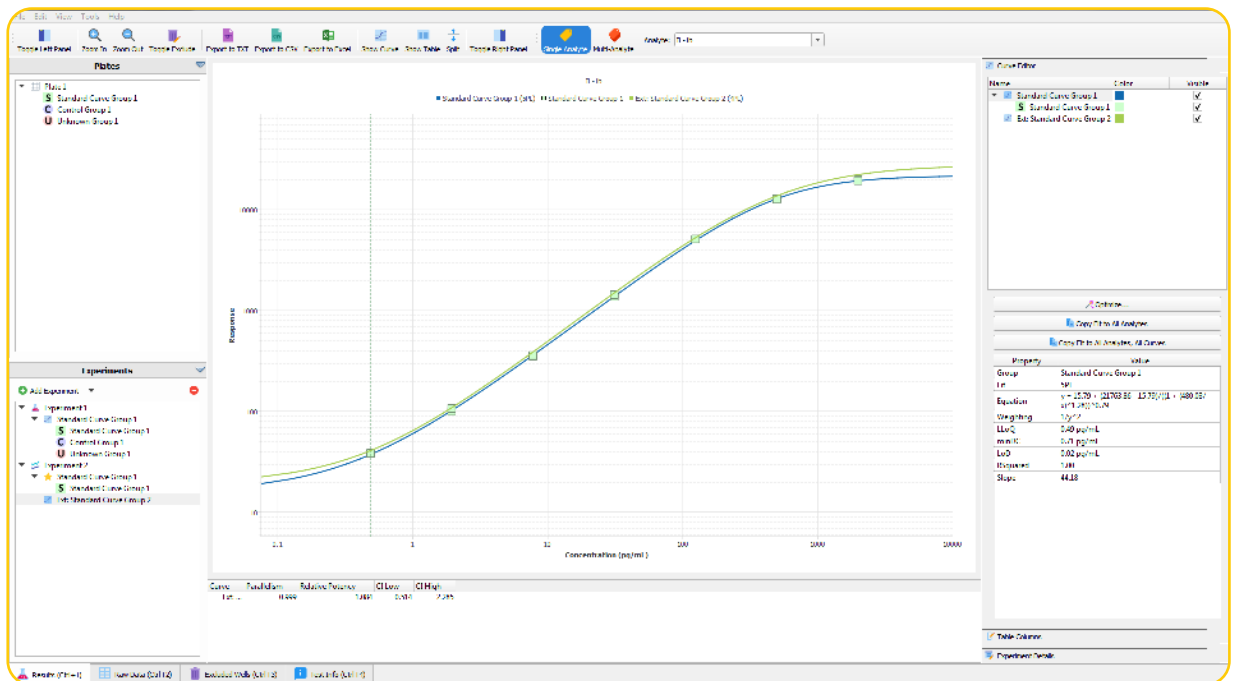
Example 2. Belysa® data annotation: below LLOQ (yellow triangle), %CV (pink flags)

Belysa® Software Curve Comparison Tool

Comparing standard curves can provide crucial information on the reproducibility of an assay over multiple plates within specific runs or over the course of a longitudinal study. As shown in Example 3, Belysa® software provides a curve comparison tool for multiple curves imported from previously saved Belysa® output files; the first curve is used as a reference against which each subsequent curve is compared.

Comparison tests across multiple runs:

- Parallelism
- Relative potency of standards



Example 3. Comparison of two standard curves in Belysa® software from two lots of the same MILLIPLEX® assay run 1 year apart.

LOOK CLOSER

All biomarker kits are not created equal

With assay performance data included in every protocol, you can discover with confidence.

Rigorous Assay Development

Specificity

- Antibody specificity is tested to ensure negligible cross-reactivity in the tested sample types
- Assay specificity is ensured by confirming consistent performance in singleplex and multiplex formats

Method Comparisons

- We test our kits against in-house kits and kits from other vendors when available, ensuring the highest performing kits

Selectivity

- Assay buffers and bead diluents are optimized to enhance antibody binding to only those analytes of interest in samples

Detection and Sensitivity

- The assay range and minimum detectible concentrations (minDCs or LLOQ) for each analyte is published in our protocols, and is based on actual samples

Performance in a Sample Matrix

- Assays are verified for the sample type noted in the protocol; for serum/plasma sample kits, we provide an optimized serum matrix to mimic the environment of the sample, normalizing assay performance

We'll help you choose the right platform and assays to meet your needs today, and we'll partner with you to meet those needs in the future — without compromising quality.

Reproducible Results You Can Trust

Stability

- All kits are rigorously tested for shipping stability to determine impact on each analyte
- Sample stability is examined at a range of temperatures, and by freeze/thaw

Precision and Accuracy

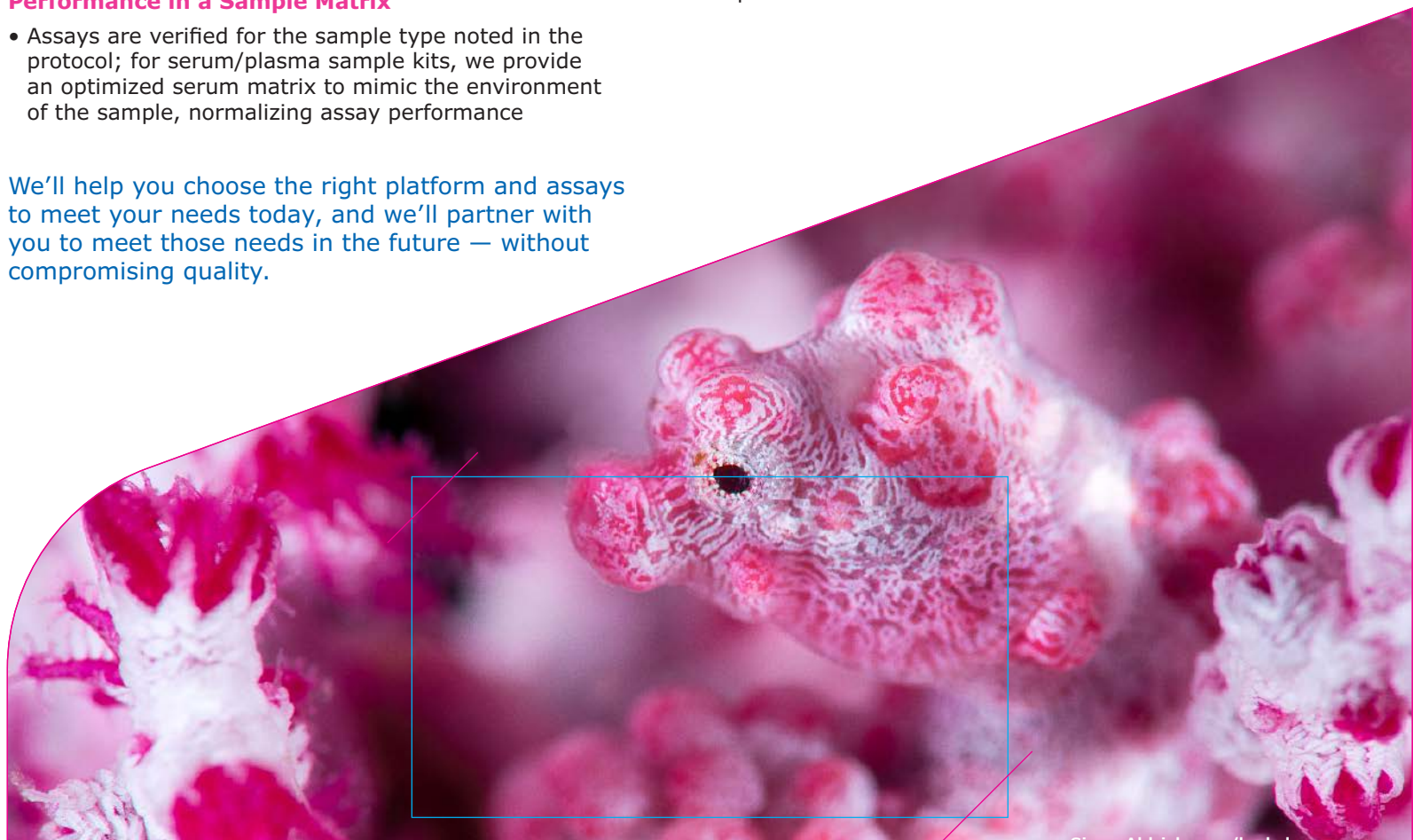
- Precision of control standards are typically within 15% CV for intra-assay and 20% CV for inter-assay
- Spike recovery in sample is performed for each analyte at three concentrations; accuracy is normally within $\pm 30\%$

Linearity of Dilution

- Diluted sample results must be directly proportional to the concentration of analyte in the sample, typically within $\pm 30\%$

Lot-to-Lot Consistency

- A "gold standard" calibrator is defined during assay development and used as a reference for all future production lots



[SigmaAldrich.com/lookcloser](https://www.SigmaAldrich.com/lookcloser)

Distributed by Abacus dx

1800 ABACUS (AUS) 0800 222 170 (NZ) | info@abacusdx.com | www.abacusdx.com

abacus dx

Millipore®

Preparation, Separation,
Filtration & Monitoring Products

Merck KGaA
Frankfurter Strasse 250
64293 Darmstadt, Germany

SigmaAldrich.com

To place an order or receive technical assistance in Europe, please call Customer Service:

France: 0825 045 645
Germany: 069 86798021
Italy: 848 845 645

Spain: 901 516 645 Option 1
Switzerland: 0848 645 645
United Kingdom: 0870 900 4645

For other countries across Europe, please call: +44 (0) 115 943 0840

Or visit: SigmaAldrich.com/offices

For Technical Service visit: SigmaAldrich.com/techservice

© 2021 Merck KGaA, Darmstadt, Germany and/or its affiliates. All Rights Reserved. MilliporeSigma, the Vibrant M, Millipore, MILLIplex, MAPmate, SMC, SMCxPRO, Belysa, and Conferma are trademarks of Merck KGaA, Darmstadt, Germany or its affiliates. All other trademarks are the property of their respective owners. Detailed information on trademarks is available via publicly accessible resources.

MK_PG7752EN V. 2.0
38639
11/2021