

# MCC

## Milestone Cryoembedding Compound

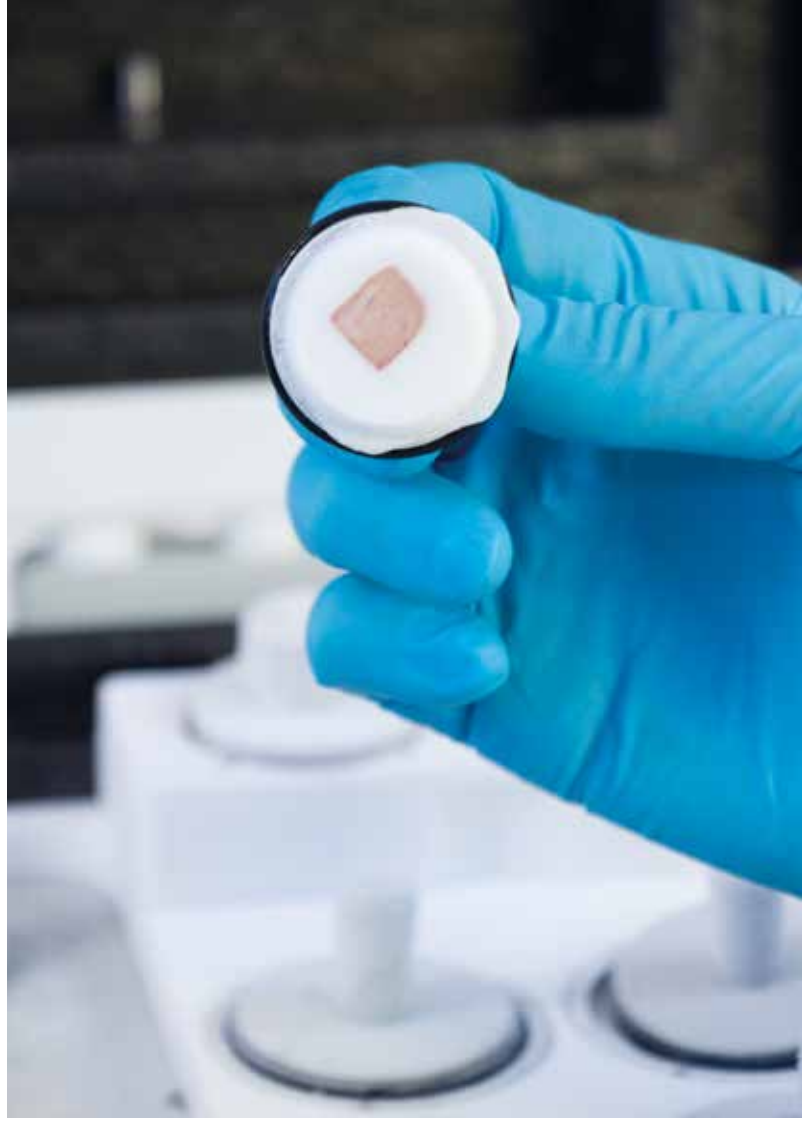


The perfect  
cryoembedding compound  
for the PrestoCHILL system.

The MCC is a proprietary formulation of glycols and resins specifically developed for optimal support during cryotomy of dissected tissues down to  $-40^{\circ}\text{C}$ .

The MCC is water soluble and doesn't leave any residue on slides eliminating background staining. The MCC compound will not dull microtome knives.

Available in 125 ml squeeze bottles.

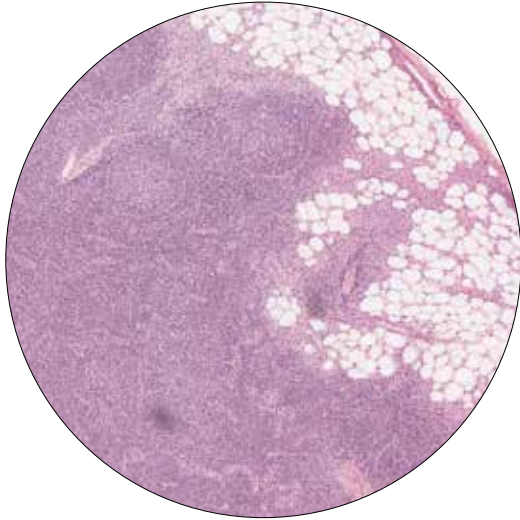


**MILESTONE**  
H E L P I N G  
P A T I E N T S

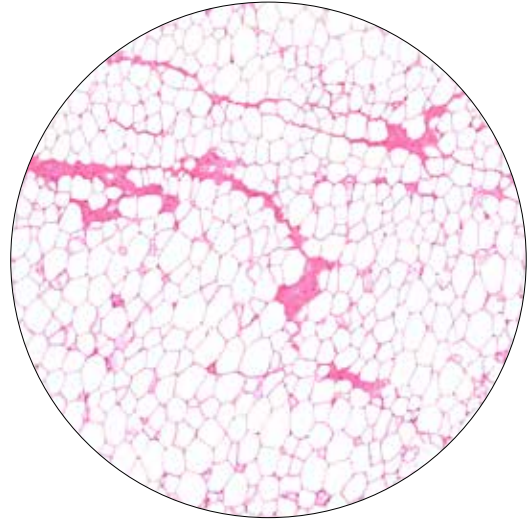
# MCC

## Milestone Cryoembedding Compound

High quality frozen sections even of difficult tissues



*Lymph node*



*Breast*

## Technical Specifications

125 ml dripper bottle  
Box of 12 bottles



### MILESTONE



HELPING  
PATIENTS

**MILESTONE Srl** - Via Fatebenefratelli, 1/5 - 24010 Sorisole (BG) - Italy  
Tel: +39 035 4128264 - Fax: +39 035 575498  
[www.milestonemed srl.com](http://www.milestonemed srl.com) - email: [medical@milestonesrl.com](mailto:medical@milestonesrl.com)

**UNI EN ISO 9001: 2008 / UNI EN ISO 13485:2012 CERTIFIED**

### MILESTONE MEDICAL TECHNOLOGIES, INC.

6475 Technology Avenue, Suite F, Kalamazoo, MI 49009 - USA  
Tel: 269-488-4950 - Toll-free: 866-995-5300 - Fax: 269-488-4949  
[www.milestonemed.com](http://www.milestonemed.com) - email: [info@milestonemed.com](mailto:info@milestonemed.com)

CAT368EN-001

Distributed by Abacus dx

1800 ABACUS (AUS) 0800 222 170 (NZ) | [info@abacusdx.com](mailto:info@abacusdx.com) | [www.abacusdx.com](http://www.abacusdx.com)

abacus dx