

2025-26

# Analyte Quarterly



## Beyond Biomarkers

Keep your focus on the next stage. Our rigorously tested and limitation-lifting immunoassay platforms provide you with all the AssayAbilities to take your biomarker research further.



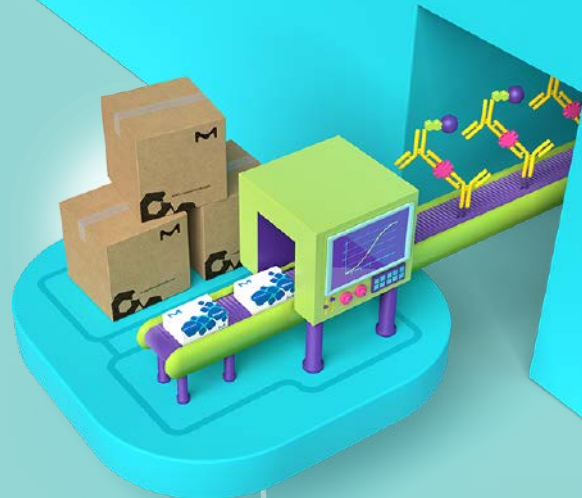
The Life Science business of Merck operates as MilliporeSigma in the U.S. and Canada.

**Millipore®**

Preparation, Separation,  
Filtration & Testing Products

# Beyond Biomarkers

We are committed to delivering the best possible immunoassays for your research needs. Whether you are using our industry-leading MILLIPLEX® multiplex panels to broadly survey multiple analytes, performing femtogram/mL biomarker analysis using the FemtoQuest™ ultrasensitive immunoassay platform, or examining single proteins with our tried-and-true ELISAs and RIAs, you can confidently expect reliable measurements, a simplified user experience, and knowledgeable scientific partners to help drive your biomarker project from hypothesis to publication.



## Designed Reliability

Our Conferma® ELISAs are engineered for endogenous detection and lot-to-lot consistency of routine-use biomarkers to keep your data reproducible, run after run.



## Genuine Flexability

Our industry-leading MILLIPLEX® multiplex assays for the Luminex® platform give you the FlexAbility to select your combination of biomarkers to simultaneously analyze with ease.



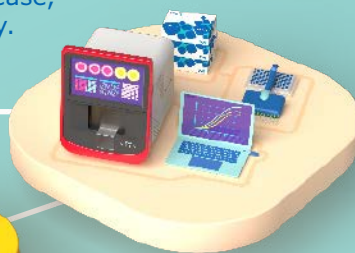
## Next-Level Detectability

Our ultrasensitive SMC® kits for the FemtoQuest™ platform take your research to the next level by detecting biomarkers down to fg/mL levels.



## Complete Compareability

Our Belysa® Immunoassay Curve Fitting Software helps you quickly compare your standard and sample curves with ease, confirming that your methods and plates ran consistently.



## Expert Customability

Our Custom Assay Development & Innovation (CADI) team of experienced scientists partner with you to develop custom immunoassays for your biomarker(s) of interest, accelerating your projects from discovery to clinical trials.



Keep your focus on the next stage.

# Immunoassays at a Glance

	MILLIPLEX® Multiplex Assays				
	Qualified Assays	Screening Assays	SMC® Assays	ELISAs	
<b>Species</b>	Human	•	•	•	
	Mouse	•		•	
	Rat	•		•	
	Non-Human Primate	•		•	
	Canine	•		•	
	Feline	•		•	
	Bovine	•		•	
	Chicken	•			
	Equine	•		•	
	Ovine	•		•	
	Porcine	•		•	
Multi-Species	•		•		
<b>Analytes</b>	Human	>620	115	>40	>1,000
	Mouse	>280		3	>300
	Rat	>170		3	>190
	Non-Human Primate	>65		1	>70
	Canine	>40		1	>30
	Feline	>15			>20
	Bovine	>15			>20
	Chicken	>10			
	Equine	>25			>20
	Ovine	>15			>5
	Porcine	>15			>30
Multi-Species	>5		1	>5	
<b>Research Areas</b>	Immunology/Inflammation	•	•	•	•
	Immune Response	•	•	•	•
	Virology	•		•	•
	Metabolism/Endocrinology	•	•	•	•
	Cardiovascular Disease	•	•	•	•
	Bone	•	•		•
	Cancer	•	•	•	•
	Neuroscience	•	•	•	•
	Toxicity	•	•		•
Cell Signaling	•			•	
<b>Kit Format</b> *only applies to MILLIPLEX® kits **Conferma® ELISAs only	Configurable (Select Your Own Analytes)*	•	•	-	-
	Premixed (Fixed Panel)*	•	•	-	-
	Bulk Premixed (Space Saver)*	•	•	-	-
	Custom Premix*	•	•	-	-
	Lot Matched at Kit Level			•	•**
<b>Qualified Sample Types</b> (see specific kits for more details)	Serum/Plasma	•		•	•
	Cell Culture Supernatants	•	Screening assays are sample agnostic	•	•
	Cell/Tissue Lysates	•		•	
	Cerebrospinal Fluid	•		•	
	Urine	•		•	
Custom Kits and Services	—			•	•

## New Immunoassay Products

### New Kits and Instruments

Description	Species	Cat. No.
<b>Instruments</b>		
FemtoQuest™ System	-	95-0200-00
BioTek® 405™ TSUVS Plate Washer for SMC® and MILLIPLEX® Technology	-	95-0004-06
<b>SMC® High Sensitivity Kits</b>		
2-Plex cTnI, IL-6	Human	03-0217-2P
2-Plex IL-1β, IL-1α	Human	03-0218-2P
2-Plex TNFα, IL-6	Human	03-0216-2P
2-Plex IL-17A, IL-17F	Human	03-0214-2P
2-Plex IL-23, IL-22	Human	03-0215-2P
CTLA-4 Singleplex	Human	03-0220-00
IL-22 Binding Protein Singleplex	Human	03-0219-00
Bead-Based Assay Development Kit (4 Plates)	-	03-0222-00
<b>MILLIPLEX® Multiplex Panels</b>		
AAV Serotyping Panel	Human	AAVSERG-230K
Cell Health Panel	Human	48-691MAG
Cytokine/Chemokine/Growth Factor Expanded Panel 1	Mouse	MCYT1-190K
Humanized Mouse Panel	Human, Mouse	HUMU-210K
Neurodegenerative Autoantibody Panel	Human	HNDGAB-220K
TSH Singleplex	Rat, Mouse	RMTSH-200K

### Coming Soon

Description	Species
<b>SMC® High Sensitivity Kits</b>	
2-Plex Aβ42, Aβ40	Human
2-Plex NF-L, Total Tau	Human
2-Plex IL-17A, IL-22	Human
Plate-Based Immunogenicity Assay Development Kit	-
<b>MILLIPLEX® Multiplex Panels</b>	
Dual Reporter IgG/IgM Reagent Pack	Human
Cytokine/Chemokine/Growth Factor Expansion Panel	Porcine

#### Reveal Elusive Biomarkers

Conquer your pursuit for immunoassay sensitivity with the ultrasensitive FemtoQuest™ system

Measure down to **fg/mL** levels of biomarkers using advanced SMC® technology with improved precision and robust data. This simple-to-use system has an enhanced optical design for **higher quality dual-plex and single analyte analysis** for efficient and reliable results.

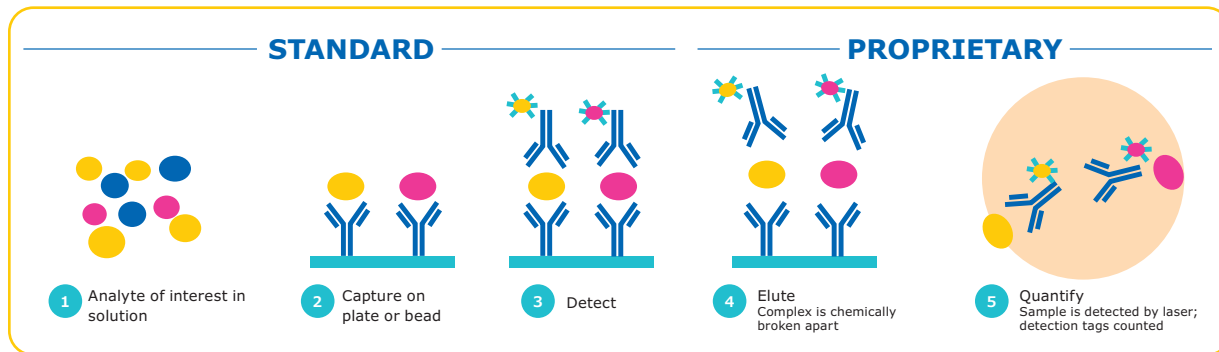


Explore more at  
[SigmaAldrich.com/femtoquest](https://SigmaAldrich.com/femtoquest)



# SMC<sup>®</sup> Technology

SMC<sup>®</sup> technology provides maximum immunoassay performance while following a workflow similar to traditional ELISA technology, as shown below for dual-plex analysis. By combining a unique assay elution step and robust digital counting on the FemtoQuest<sup>™</sup> system, SMC<sup>®</sup> technology improves signal-to-noise ratios over traditional immunoassay technologies, enhancing quantification at both low and high levels of expression with one system. The FemtoQuest<sup>™</sup> instrument can be used for measuring both single analyte and dual-plex assays.



## Steps 2-3

Antibodies translate each biomarker into a signal

## Step 4

Fluorescent dye-labeled detection antibodies dissociate from the immunocomplex

## Step 5

On the FemtoQuest<sup>™</sup> instrument, signal is collected from free-floating fluorochromes using a rotating laser, camera, and counting individual molecules by an avalanche photodiode

## Digital counting improves sensitivity and dynamic range

The FemtoQuest<sup>™</sup> system captures all digital events counted above the background threshold. Using enhanced algorithms, digital events are computed across a spectrum of time series for a single standard. This digital counting of single molecules improves the assay sensitivity and extends the dynamic range beyond what can be achieved with traditional methods.

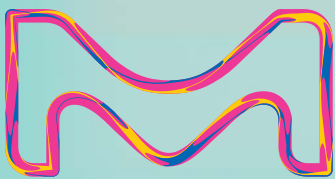
## Read More About Ultrasensitive Technology

Explore all the ways researchers are using SMC<sup>®</sup> ultrasensitive assays at [SigmaAldrich.com/smc-learn](https://SigmaAldrich.com/smc-learn)



# CONTROL YOUR BIOMARKER QUEST

Gain your desired immunoassay sensitivity with the ultrasensitive **FemtoQuest™** system



Start Your Quest at [SigmaAldrich.com/femtoquest](https://www.sigmaaldrich.com/femtoquest)

FOR RESEARCH USE ONLY. NOT FOR USE IN DIAGNOSTIC PROCEDURES.

# SMC® Technology for High Sensitivity Analysis

## Control Your Biomarker Quest



**Gain your desired immunoassay sensitivity with the ultrasensitive FemtoQuest™ system.**

- Measure down to femtogram/mL levels
- Improved precision and robust data
- Perform **dual-plex** and **single analyte** analysis
- Low maintenance and automation compatible
- Use with a variety of off-the-shelf kits
- Integrated data analysis
- Lightweight fluidics-free benchtop instrument
- Cat. No. **95-0200-00**

<b>Dynamic Range</b>	>4 logs
<b>Limit of Detection (LOD)</b>	<1 fM
<b>Instrument Footprint</b>	Height: 358.53 mm (14.11 in) Width: 444.5 mm (17.5 in) Depth: 609.91 mm (24.0 in)
<b>Instrument Weight</b>	29.7 kg (65.5 lb)
<b>Read Format</b>	96-well assay format read on RFID-tagged SMC® Read Plates
<b>Regulatory Compliance</b>	LIMS compatible
<b>Automation Compatible</b>	Compatible with automation, including the <b>AAW™ Workstation</b>



### Continually expanding list of available 2-Plex kits for use on the FemtoQuest™ instrument include:

- IL-17A, IL-17F (Cat. No. 03-0214-2P)
- IL-23, IL-22 (Cat. No. 03-0215-2P)
- TNFα, IL-6 (Cat. No. 03-0216-2P)
- cTnI, IL-6 (Cat. No. 03-0217-2P)
- IL-1β, IL-1α (Cat. No. 03-0218-2P)

### Three Levels of Onsite Service Support for FemtoQuest™ System

- **Total Service:** Unlimited visits including labor, travel, expenses and all parts for any service for one year.
- **Advanced Service:** Labor, travel and expenses for one preventative maintenance visit and one floating visit for one year.
- **Essential Service:** Labor for one preventative maintenance visit for one year.

# SMC® Singleplex High Sensitivity Kits

Product Description	Cat. No.	LLOQ (pg/mL) <sup>1</sup>	Species <sup>2</sup>	Sample Type <sup>3</sup>
<b>Immunology/Inflammation</b>				
IFN-α2	03-0186-00	0.06	H	P,S
IFN-β1	03-0191-00	0.15	H	P,S
IFN-γ	03-0181-00	0.03	H	P,S
IFNλ1	03-0213-00	0.26	H	P,S
IL-1α2	03-0167-00	0.12	H	P,S
IL-1β	03-0160-00	0.20	H	P,S
IL-2	03-0195-00	0.09	H	P,S
IL-4	03-0161-00	0.04	H	P,S
IL-5	03-0168-00	0.04	H	P,S
IL-6	03-0155-00	0.08	H	P,S
IL-10	03-0176-00	0.10	H	P,S
IL-12p70	03-0182-00	0.10	H	P,S
IL-13	03-0156-00	0.04	H	P,S
IL-17A/F Heterodimer	03-0177-00	2.34	H	P,S
IL-17A	03-0159-00	0.07	H	P,S
IL-17F	03-0164-00	0.20	H	P,S
IL-18	03-0190-00	0.09	H	P,S
IL-22	03-0162-00	0.10	H	P,S
IL-22BP <b>NEW</b>	03-0219-00	3.91	H	P,S
IL-23	03-0157-00	0.10	H	P,S
MCP-1	03-0187-00	0.15	H	P,S
TNFα	03-0163-00	0.20	H	P,S
VEGF-A	03-0180-00	0.20	H	P,S
<b>Neuroscience</b>				
Phospho-α-Synuclein(Ser129)	03-0188-00	0.10	H	P,S,C
Total-α-Synuclein	03-0196-00	1.95	H	P,S,C
Amyloid beta 1-40	03-0145-00	5.86	H,M,R	P,C
Amyloid beta 1-42	03-0146-00	0.98	H,M,R	P,C
BDNF	03-0171-00	0.04	H	P,S,C
GFAP	03-0203-00	0.23	H	P,S,C
NF-L	03-0202-00	0.87	H	P,S,C
NPTX2	03-0199-00	0.58	H	P,S,C
SNAP-25	03-0206-00	0.26	H	P,S,C
TDP-43	03-0205-00	5.21	H	P,S,C
Phospho-Tau181	03-0184-00	0.94	H	P,S,C
Phospho-Tau217	03-0210-00	1.95	H	P,S,C
Phospho-Tau231	03-0211-00	1.95	H	P,S,C
Total Tau	03-0185-00	4.69	H	P,S,C
UCHL1	03-0183-00	2.60	H	P,S,C

# SMC® Singleplex High Sensitivity Kits (continued)

Product Description	Cat. No.	LLOQ (pg/mL) <sup>1</sup>	Species <sup>2</sup>	Sample Type <sup>3</sup>
<b>Cancer</b>				
CTLA-4 <b>NEW</b>	03-0220-00	0.30	H	P,S
PD-1	03-0207-00	3.47	H	P,S
PD-L1	03-0208-00	0.78	H	P,S
<b>Cardiovascular</b>				
cTnI	03-0154-00	0.69	H,Cy,R,C,GP	P,S
<b>Metabolism/Endocrinology</b>				
Glucagon	03-0153-00	0.78	H,M,R	P
<b>Immunogenicity</b>				
IgE <sup>4</sup>	03-0201-00	31.00	H	P,S
IgM <sup>4</sup>	03-0204-00	206.00	H	P,S
<b>Virology</b>				
SARS-CoV-2 RBD IgG <sup>5</sup>	03-0193-00	NA <sup>5</sup>	H	P,S
SARS-CoV-2 S1 IgA <sup>5</sup>	03-0197-00	NA <sup>5</sup>	H	P,S

## New SMC® 2-Plex High Sensitivity Kits for Use on the FemtoQuest™ Instrument

Product Description	Cat. No.	LLOQ (pg/mL) <sup>1</sup>	Species <sup>2</sup>	Sample Type <sup>3</sup>
<b>Immunology/Inflammation</b>				
2-Plex IL-1β, IL-1α <b>NEW</b>	03-0218-2P	0.04 (IL-1β), 0.04 (IL-1α)	H	P,S
2-Plex TNFα, IL-6 <b>NEW</b>	03-0216-2P	0.02 (TNFα), 0.06 (IL-6)	H	P,S
2-Plex IL-17A, IL-17F <b>NEW</b>	03-0214-2P	0.02 (IL-17A), 0.09 (IL-17F)	H	P,S
2-Plex IL-23, IL-22 <b>NEW</b>	03-0215-2P	0.04 (IL-23), 0.09 (IL-22)	H	P,S
<b>Cardiovascular</b>				
2-Plex cTnI, IL-6 <b>NEW</b>	03-0217-2P	0.35 (cTnI), 0.06 (IL-6)	H	P,S

<sup>1</sup> LLOQ: Lowest point on standard curve with CV < 20% and accuracy within 20% of expected values. Lot-specific LLOQ will be reported on the Certificate of Analysis. <sup>2</sup> Optimized for first species type listed. Other listed species have been tested, but not optimized for peak performance. Key: H=Human; M=Mouse; R=Rat; GP=Guinea Pig; Cy=Cynomolgus Monkey; C=Canine. <sup>3</sup> Optimized for use in sample type(s) listed. Key: P=Plasma; S=Serum; L=Lysate; U=Urine; C=Cerebrospinal Fluid (CSF). <sup>4</sup> Plate-based assay. <sup>5</sup> Qualitative assay.

# Multiplexing Options That Fit Your Purpose

Introducing Screening and Qualified MILLIPLEX® Assays

## Compelling PlexAbility with MILLIPLEX® Screening Assays

- Save sample, time, and money by profiling up to 115 analytes simultaneously without sacrificing specificity
- Excludes Serum Matrix to create sample agnostic panel for greater flexibility
- Ideal for detecting differences between experimental groups
- Human assay available
- Uses same critical raw materials as Qualified assays

Screen to identify analytes of interest and move to Qualified for further analysis



## Genuine PlexAbility with MILLIPLEX® Qualified Assays

- Lot-to-lot reproducibility with rigorous QC testing
- Includes key reagents like Quality Controls and Serum Matrix for sample normalization
- Ideal for long-term or cross-site studies
- Broadest selection of analytes across research areas and species
- Configurable, premixed, and bulk kit options to fit your exact research needs



# MILLIPLEX® Analyte Index

Analyte	Page No.	Analyte	Page No.	Analyte	Page No.
<b>4-6</b>		Argonaute-2 (Ago2) (autoantibody).....	21	CD80/B7-1 .....	20,24
4-1BBL/TNFSF9 .....	20,24	ATF2 (Thr71) .....	28	CD81 .....	20
4E-BP1 (total).....	28	ATR (total) .....	28	CD86/B7-2 .....	20
4E-BP1 (Thr37/46) .....	28	AXL (soluble) .....	20	CD137/4-1BB/TNFRSF9 (soluble) .....	17,20,22,24
5'-NT/CD73 .....	20,21,24,25	<b>B</b>		CD226/DNAM-1.....	20,24
6Ckine/CCL21/Exodus-2 .....	17,22,26	β-2-Microglobulin .....	21,24,25,26	CD9.....	20
<b>A</b>		β-Endorphin .....	21,25	CEA.....	20
α-1-Acid Glycoprotein (AGP) .....	19,23,25	β2-Glycoprotein (autoantibody) .....	18	CENP-A (autoantibody) .....	18
α-1-Antitrypsin (A1AT).....	21	β-Tubulin (total).....	30	CENP-B (autoantibody) .....	18
α-1 Microglobulin .....	21	B7-H2/ICOSL.....	20,24	CHI3L1/YKL40 .....	18,20,22
α-2 Macroglobulin (A2M).....	19,21,23,25	B7-H3/CD276.....	20,24	Chk1 (Ser345).....	28
α-Fetoprotein (AFP).....	19,20	B7-H4/VTCN1 .....	20	Chk2 (Thr68).....	28
α-MSH .....	21,24,25	B7-H5/VISTA .....	20	CHOP (Total) .....	27
α-Synuclein .....	21	B7-H6 .....	20	<b>CK-MB</b> .....	16,19
α-Synuclein (autoantibody) .....	21	BAD (total).....	27	Cleaved PARP (total) .....	27
AAV1 (serology).....	19	BAD (Ser112) .....	27	Clusterin.....	21,24,25,26
AAV2 (serology).....	19	BAFF/Blys .....	17,18,20,22	CNTF .....	19,22
AAV5 (serology).....	19	BAFF/Blys (autoantibody).....	18	Collagen IV .....	21
AAV6 (serology).....	19	BAX (total).....	27	COMP (cartilage oligomeric matrix protein) .....	18
AAV8 (serology).....	19	BCA-1/CXCL13.....	16,17,22,24,26	Complement C1q .....	18
AAV9 (serology).....	19	Bcl-2 (total).....	25	Complement C2 .....	18
AChR (autoantibody) .....	21	Bcl-2 (Ser70) .....	25	Complement C3 .....	18,21
<b>ACTH</b> .....	16,19,20,22,23,24,25,26	Bcl-xL (total) .....	25	Complement C3b .....	18
Active Caspase 8 (total).....	27	Bcl-xL/BAD (interaction) .....	25	Complement C4 .....	18,21
Active Caspase 9 (total).....	27	<b>BDNF</b> .....	16,19,21,23,24	Complement C4b .....	18
ADAMTS13 .....	19	Betacellulin .....	22,24	Complement C5 .....	18
Adiponectin .....	19,23,24,25	BIM .....	27	Complement C5a .....	18
Adipsin/Factor D .....	18,19,23	Blk (Tyr389) .....	29	Complement C5b-9 .....	18
AGNA (SOX1) (autoantibody).....	21	BMP-9.....	20	Complement C9 .....	18
Agouti-Related Protein (AgRP).....	19,22	<b>BNP</b> .....	16,19	Complement Factor B .....	18
ALK-1 (soluble) .....	24	BRAF (Ser446) .....	29	Complement Factor H.....	18,21
Akt/PKB (Ser473).....	27,28,29	BRAK/CXCL14.....	18	Complement Factor I.....	18
Akt/PKB (total).....	27,28,29	BTLA .....	20,24	Complex IV (Total).....	27
Akt1 (Ser473).....	29	<b>C</b>		Connective Tissue Growth Factor (CTGF).....	25
Akt1 (total) .....	29	c-Jun (Ser73) .....	28	Contactin-1 .....	21
Akt2 (Ser474).....	29	c-Kit (panTyr) .....	28	Corticosterone.....	24
Akt2 (total) .....	29	c-Kit/SCFR (soluble) .....	20	Cortisol.....	21,26
Albumin .....	21,25,26	c-Met/HGFR (panTyr).....	28	CRAF (Ser338).....	29
ALDH1A1 .....	20	c-Myc (total).....	28	Creatine Kinase Muscle (CKM) .....	25
AMPA -R (autoantibody).....	21	<b>C-Peptide</b> .....	16,19,22	CREB (Ser133).....	28,29
Amphiphysin (autoantibody).....	21	C-Peptide 2 .....	23,24	CREB (total) .....	28,29
Amphiregulin .....	24	C-Reactive Protein (CRP) .....	19,21,23,26	CRMP5 (autoantibody) .....	21
<b>Amylin (active)</b> .....	16,19,22,23,24	C1q (autoantibody) .....	21	CRYAB (autoantibody).....	21
Amylin (total) .....	19,26	CA125 .....	20	CTACK/CCL27.....	17,19,23,26
Amyloid beta 1-40 (Aβ 1-40) .....	21,24	CA15-3 .....	20	CTAG1B/NY-ESO-1 (autoantibody).....	20
Amyloid beta 1-42 (Aβ 1-42) .....	21,24	CA19-9 .....	20	CTLA-4/CD152 .....	20,24
Amyloid beta 1-42 (Aβ 1-42) (autoantibody).....	21	Calbindin .....	21	<b>CXCL6/GCP-2</b> .....	16,17,18,19
Angiogenin (ANG) .....	21	Calreticulin (CALR).....	20	CXCL16.....	17,18,19,22
Angiopoietin-2 .....	20,24	Carbonic Anhydrase 9 (CA9).....	20	Cyclin B1 (Total) .....	27
Angiostatin/Kringle .....	20	<b>Cardiac Troponin I (cTnI)</b> .....	16,19,23,25	CYFRA21-1 .....	17
Angiotensinogen (AGT).....	21	Cardiac Troponin T (cTnT).....	20,23,25	Cystatin C.....	21,24,25,26
ANGPTL3 .....	19	Cathepsin D .....	20,21		
ANGPTL4 .....	19	Caveolin-1 (CAV-1) .....	25	<b>D</b>	
ANGPTL6/AGF.....	19	CCL25/TECK .....	22	D-dimer .....	19
ANNA2 (Ri)/NOVA1 (autoantibody).....	21	CCL28 .....	17,18	<b>DKK1</b> .....	16,20,25
Apelin .....	19	CCNB1/Cyclin B1 (autoantibody) .....	20	DPP4 .....	20
Apolipoprotein AI (Apo AI) .....	20,21	CD3ε (panTyr).....	29	DPPX (autoantibody) .....	21
Apolipoprotein AII (Apo AII).....	20	CD14 (soluble) .....	20	DRD2 (autoantibody).....	21
Apolipoprotein B (Apo B).....	20	CD25/IL-2Rα .....	18,20,22,24	<b>E</b>	
Apolipoprotein CII (Apo CII).....	20	CD27 .....	20,24	E-Cadherin.....	20,24
Apolipoprotein CIII (Apo CIII) .....	20,21	CD28 .....	20	<b>EGF</b> .....	16,17,20,21,22,24,25
Apolipoprotein E (Apo E).....	20,21	CD30/TNFRSF8 (soluble).....	18,20,22	EGFR/HER1/ErbB1 (soluble) .....	18,20
ApoE4.....	21	CD31/PECAM-1 (soluble) .....	20,23,24	EGFR2/Her2/ErbB2 (soluble) .....	20
APRIL .....	17,20	CD40 .....	20,24	EGFR3/Her3/ErbB3 (soluble) .....	20
AQP4 (autoantibody) .....	21	<b>CD40L (soluble)</b> .....	16,17,20,22,23	ELAVL4 (HuD) (autoantibody) .....	21
Arginase-1 (ARG1) .....	20,21,25	CD44 .....	20	eIF-4B (Ser422) .....	28
Argonaute-2 (Ago2).....	20	CD63.....	20		

# MILLIPLEX® Analyte Index (continued)

Analyte	Page No.	Analyte	Page No.	Analyte	Page No.
eIF-4E (Ser209).....	28	Glial Fibrillary Acidic Protein (GFAP) ....	21	IGFBP2 .....	19
eIF-4G (Ser1108).....	28	Glial Fibrillary Acidic Protein (GFAP)		IGF2BP2/IMP2 (autoantibody) .....	20
eIF2a (Ser51).....	28	(autoantibody).....	21	IGFBP3 .....	19,20
ENA-78/CXCL5.....	16,17,27	GLP-1 (active).....	19,22,23,24,26	IGF2BP3/IMP3 (autoantibody) .....	20
Endocan-1 (ESM-1).....	19,23	GLP-1 (total) .....	16,19,23,24	IGFBP4 .....	19
Endoglin .....	20,24	Glucagon .....	16,19,22,23,24,26	IGFBP5 .....	19
Endostatin .....	20	GM-CSF .....	16,17,18,22,23,24,25,26	IGFBP6 .....	19
Endothelin-1.....	20,24	GnRH.....	19,23	IGFBP7 .....	19
ENO1 (autoantibody) .....	20	GOT1.....	25	IgG1 .....	19,23
Eotaxin/CCL11.....	16,17,22,24,26	GP130 (soluble) .....	18,22	IgG2 .....	19
Eotaxin-2/CCL24/MPIF-2.....	16,17	Granulysin .....	20	IgG2a .....	23
Eotaxin-3/CCL26.....	16,17	Granzyme A .....	16,17,22	IgG2b .....	23
EpCAM.....	20	Granzyme B .....	16,17,18,20,22,24	IgG3.....	19,23
Erythropoietin (EPO) .....	16,19,22,23,24	GRO $\alpha$ /CXCL1 .....	16,17,22,23,24,25,26	IgG4.....	19
ErbB1/EGFR (panTyr).....	28	GRP78 (Total).....	27	IgM .....	19,23
ErbB2/HER2 (panTyr).....	28	GSK3 $\alpha$ (total).....	27	IkBa (Ser32).....	28
ErbB3/HER3 (panTyr) .....	28	GSK3 $\alpha$ (Ser21).....	27	IKK $\alpha$ / $\beta$ (Ser177/181).....	28
ErbB4/HER4 (panTyr).....	28	GSK3 $\beta$ (total).....	27	IL-1 $\alpha$ .....	16,17,18,22,23,24,25,26
Erk/MAPK 1/2 (Thr185/Tyr187) .....	28,29	GSK3 $\beta$ (Ser9).....	27	IL-1 $\alpha$ (autoantibody).....	18
Erk/MAPK 1/2 (total) .....	28,29	GSTa .....	21,25	IL-1 $\beta$ .....	16,17,19,20,22,23,24,25,26
E-Selectin (soluble).....	20,23,25	<b>H</b>		IL-1RI (soluble).....	18,22
Estradiol .....	26	H2AX (Ser139) .....	27,28	IL-1RII (soluble).....	18,22
Exodus-2/CCL21/6Ckine .....	17,22,26	Haptoglobin.....	19,23,25,26	IL-1Ra.....	16,17,22,26
<b>F</b>		HB-EGF.....	16,20	IL-2 .....	16,17,22,23,24,25,26
FABP1.....	19,21	HCC-1/CCL14.....	18	IL-2 (autoantibody) .....	18
FABP3.....	16,19,21,25	HCC-4/CCL16 .....	18	IL-2Ra (soluble) .....	18,20,22,24
FABP4.....	16,19	HCG $\beta$ .....	20	IL-3 .....	16,17,22,23
FADD (Ser194).....	28	Hck (Tyr411).....	29	IL-3 (autoantibody) .....	18
Fas Ligand (sFasL) (soluble)		HE4.....	20	IL-4 .....	16,17,22,23,24,25,26
.....	16,17,18,20,22,24	Hepsin .....	20	IL-4 (autoantibody) .....	18
Fas/TNFRSF6 (soluble) ....	16,17,18,20,22	HER2/ErbB2 (autoantibody) .....	20	IL-4R (soluble).....	18,22
Ferritin .....	20,21	HGF.....	16,19,20,24	IL-5.....	16,17,22,23,24,26
Fetuin A .....	19,21	HGFR/c-Met (soluble) .....	20	IL-6 .....	16,17,19,20,22,23,24,25,26
FGF-1/FGF-acidic .....	20	HIF-1 $\alpha$ (Total).....	27	IL-6 (autoantibody) .....	18
FGF-2/FGF-basic .....	16,20,22,24,26	HIF-1 $\alpha$ (autoantibody).....	20	IL-6R (soluble).....	18,22
FGF-19.....	19	Histone H3 (Ser10).....	27	IL-6Ra (soluble) .....	20
FGF-21.....	16,19,23,24	HMGB1 .....	17,18	IL-7.....	16,17,22,23,25
FGF-23 .....	16,19,20,25	HSP27 (Ser78) .....	28	IL-8/CXCL8.....	16,17,18,19,20,22,23,25,26
FGFR1 (panTyr).....	28	HSP60 (autoantibody) .....	20	IL-8/CXCL8 (autoantibody).....	18
FGL1/Hepassocin .....	20	HSP70 .....	18	IL-9.....	16,17,22
Fgr (Tyr412) .....	29	HSP70 (Total).....	27	IL-10.....	16,17,19,22,23,24,25,26
Fibrinogen.....	19,25	HSP70 (Total).....	27	IL-10 (autoantibody).....	18
Fibroblast Activation Protein (FAP).....	20	Human Serum Albumin (HSA).....	21	IL-11.....	16,17,18,22
Flotillin-1 (FLOT-1).....	20	HVEM .....	20,24	IL-12.....	26
Flt3 Ligand.....	16,17,22,26	<b>I</b>		IL-12 (p40).....	16,17,22,23,26
Flt3 (panTyr) .....	28	I-309/CCL1.....	16,17,26	IL-12 (p40) (autoantibody).....	18
Follistatin (FST).....	20,23,24	ICAM-1 (soluble) .....	18,19,21,22,23,25	IL-12 (p70).....	16,17,22,23,24,26
Follistatin-like Protein 1 (FSTL1) 23,24,25		ICOS .....	20	IL-13.....	16,17,22,24,26
Fractalkine/CX3CL1.....	16,17,19,22,24,26	ICOS .....	20	IL-14/a -Taxilin.....	18
FSH.....	19,22,23,24,26	IDO1 .....	20	IL-15.....	16,17,19,22,23,24,25
Fyn (Tyr420).....	295	IFN $\alpha$ .....	22	IL-15 (autoantibody).....	18
<b>G</b>		IFN $\alpha$ 2 .....	16,17,18,22	IL-16.....	17,22,25,26
Galectin-1 .....	20,24	IFN $\alpha$ 2 (autoantibody) .....	18	IL-17A/CTLA8 .....	16,17,22,23,24,25,26
Galectin-1 (GAL1) (autoantibody).....	20	IFN $\beta$ .....	17,18,22	IL-17A/CTLA8 (autoantibody).....	18
Galectin-3 .....	20,24	IFN $\beta$ (autoantibody) .....	18	IL-17E/IL-25 .....	17,22
Galectin-3 (GAL3) (autoantibody).....	20	IFN $\gamma$ .....	16,17,18,22,23,24,25,26	IL-17F .....	16,17,22
GAPDH (total).....	20,30	IFN $\gamma$ (autoantibody) .....	18	IL-17F (autoantibody) .....	18
G-CSF.....	16,17,20,22,23,24,26	IFN $\gamma$ Receptor 1 (IFNGR1).....	18	IL-18.....	16,17,18,19,22,23,24,25,26
G-CSF (autoantibody).....	18	IFN $\epsilon$ .....	18	IL-18 (autoantibody).....	18
GDF-11 .....	19	IFN $\omega$ .....	17,18	IL-18BP $\alpha$ .....	18
GDF-15 .....	19,20,22	IFN $\omega$ (autoantibody).....	18	IL-19.....	18
GDNF.....	21	IgA.....	19,23	IL-20.....	17,22,26
GH .....	19,22,23,24,26	IgE.....	19,23	IL-21 .....	16,17,22,25,26
Ghrelin (active).....	16,19,22,23,24,26	IGF-1.....	19	IL-22 .....	16,17,22
GIP (total).....	16,19,22,23,24,26	IGF-2.....	19	IL-22 (autoantibody).....	18
GITR .....	20,24	IGF1R (total) .....	27	IL-23 .....	16,17,22,26
GITRL.....	20	IGF1R (panTyr) .....	28	IL-24 .....	17,18
		IGF1R (Tyr1135/1136) .....	27	IL-27.....	17,22
		IGFBP1 .....	19	IL-28A/IFN $\lambda$ 2.....	17,18,22,26

# MILLIPLEX® Analyte Index (continued)

Analyte	Page No.	Analyte	Page No.	Analyte	Page No.
IL-28B/IFNA3	18,22	MEK1 (Ser217/221)	29	Osteopontin (OPN)	16,20,21,24,25,26
IL-29/IFNA1	17,18	MEK1 (Ser222)	28	Osteopontin (OPN) (autoantibody)	18
IL-31	17,22	Melanoma Inhibitory Activity Protein (MIA)	20	Osteoprotegerin (OPG)	16,20,25
IL-32α	18	Melatonin	21,24	OX40/CD134	20
IL-33/NF-HEV (mature)	16,17,22,26	Mesothelin	20	Oxytocin	21,24,25
IL-34	17,18	mGluR1 (autoantibody)	21		
IL-35	17,18	Mi-2 (autoantibody)	18	<b>P</b>	
IL-36β/IL-1F8	18	MICA	20	PP16-INK4a (autoantibody)	20
IL-36Ra/IL-1F5	25,26	MICB	20	p21 (total)	28
IL-37/IL-1F7	18	Midkine	20	p38/SAPK2A/B (Thr180/Tyr182)	28,30
IL-38/IL-1F10	18	MIF	18,20	p38/SAPK2A/B (total)	28,30
Insulin	16,19,20,22,23,24,25,26	MIG/CXCL9	16,17,18,22,23	p53 (autoantibody)	20
IP-10/CXCL10	16,17,21,22,23,24,25,26	MIP-1α/CCL3	16,17,18,22,24,25,26	p53 (Ser15)	27,28
IR (total)	27	MIP-1β/CCL4	16,17,18,22,25,26	p53 (Ser46)	27
IR (Tyr162/1163)	27	MIP-1δ/MIP-5/CCL15	16,17,26	p70S6 Kinase (total)	27,28
Irisin	19,23,24	MIP-2/CXCL2	22,24	p70S6 Kinase (Thr389/412)	27,28
IRS1 (Ser636)	27	MIP-3α/CCL20	16,17,18,22,25	PAI-1 (total)	18,19,21,23,24,25
IRS1 (total)	27	MIP-3β/CCL19	16,17,18,22	Pancreatic Polypeptide (PP)	
I-TAC/CXCL11	16,17,18,22	MIP-4/PARC/CCL18	18,21		16,22,23,24,26
		MMP-1	16,18	PARK5/UCHL1	21
<b>J</b>		MMP-2	16,18,22,23	PARK7/DJ1	21
Jag1	19,23	MMP-3	16,18,22,23	PCA1 (Yo)/CDR2 (autoantibody)	21
JNK/SAPK1 (Thr183/Tyr185)	27,28,30	MMP-7	16,18	PCNA (autoantibody)	18
JNK/SAPK1 (total)	28,30	MMP-8	18,22,23	PD-1	20,24
Jo-1 (autoantibody)	18	MMP-9	16,18	PDGF-AA	16,17,21
		MMP-10	16,18	PDGF-AB/BB	16,17,20,21
<b>K</b>		MMP-12	16,18,22,23	PDGF-BB	26
Kallikrein-6	20,21	MMP-13	18	PDGFRβ (panTyr)	28
KC-like Protein	25	MOG (autoantibody)	21	PD-L1	20,24
KC/GRO/CINC-1/CXCL1	22,23,24,25,26	MPIF/CCL23	17,18	PD-L2	20,24
KIM-1	21,24,25,26	MSK1 (Ser212)	28	PEDF	21
Ki-67 (Total)	27	mTOR (Ser2448)	27,30	Pentraxin-3 (PTX3)	20
Ku (autoantibody)	18	mTOR (total)	27,30	Perforin	16,17,20,22
		Mucin-1 (MUC1) (autoantibody)	20	Periostin	20
<b>L</b>		Myeloperoxidase (MPO)	19,20,21	Polychromatin K48-linkage (Total)	27
Lactotransferrin (LTF)	18	Myeloperoxidase (MPO) (autoantibody)	18	Progranulin (pGRN)	20
LAG-3	20,24	Myoglobin	19	PL-12 (Alanyl-tRNA Synthetase)	
LAT (panTyr)	29	Myosin Light Chain 3 (MYL3)	25	(autoantibody)	18
LC3B (Total)	27	Myostatin/GDF8	16,19,23,24	Placental Growth Factor 2	23,24
Lck (panTyr)	29			Placental Growth Factor (PIGF)	16,19,20
Lck (Tyr394)	29	<b>N</b>		Platelet Factor 4 (PF4)/CXCL4	19
Leptin	16,19,20,22,23,24,25,26	NAP-2/CXCL7	18	PF4 (autoantibody)	18
Leucine-rich alpha-2-glycoprotein 1 (LRG1)	20	NCAM (soluble)	21	PM/Sci 100 (autoantibody)	18
Leukemia Inhibitory Factor (LIF)	16,17,19,22,23,24,26	NCAM1/L1CAM/CD171	20	PNMA1 (Ma1) (autoantibody)	21
LH	19,22,23,24,26	Nectin-2	20	Progesterone	26
LIGHT	19,23	Nectin-4	20	Prolactin	20,23,24,26
LIX/CXCL5	22,24	Neurogranin (NRGN)	21	ProMMP-9	22,23
L-Selectin (soluble)	19	Neuron-specific Enolase (NSE)	20,21	Properdin	18
Lymphotactin/XCL1	17,18	Neuropilin-1 (soluble)	20	Proteinase 3 (autoantibody)	18
Lyn (Tyr397)	29	Neurotensin	21,24,25	PSA (free)	20
		Neutrophil Elastase-2 (ELA2)	18	PSA (total)	20
<b>M</b>		NFκB (total)	28	P-Selectin (soluble)	19,23
Mannose-Binding Lectin (MBL)	18	NFκB (Ser536)	28	PTEN (total)	27
MBP (autoantibody)	21	NF-L (autoantibody)	21	PTEN (Ser380)	27
MCAM/MUC18/sCD146	20	NGAL/Lipocalin-2	18,19,21,24,25,26	PTH	20,21,25
Mcl-1/BIM (interaction)	27	NGF	16,19	PVR/CD155	20
Mcl-1 (total)	27	NMDAR1 (autoantibody)	21	PYY (total)	16,19,22,23,24,26
MCP-1/CCL2	16,17,19,22,23,24,25,26	Notch1	23		
MCP-2/CCL8	16,17,22,26	NOXA/Mcl-1 (interaction)	27	<b>R</b>	
MCP-3/CCL7	16,17,22	NRXN3 (autoantibody)	21	RAGE (soluble)	18,21,22
MCP-4/CCL13	16,17,26	NT-proBNP	16,19	RANKL	20
MCP-5/CCL12	22			RANTES/CCL5	16,17,21,22,24,25,26
M-CSF	16,17,18,22,23,25	<b>O</b>		Ras (total)	29
M-CSFR (panTyr)	28	Oncostatin-M (OSM)	19,23	RasG12D (total)	29
MDC/CCL22	16,17,22	Osteoactivin	21	RasG12V (total)	29
MDH1	21	Osteocalcin (OC)	16,20	RBP4	21,26
MDM2 (total)	28	Osteocrin (OSTN)/Musclin	19,23,24	Renin	21,24
		Osteonectin/SPARC	16,19,20,23,24	Resistin	18,19,23
				Ribosomal P (autoantibody)	18

# MILLIPLEX® Analyte Index (continued)

Analyte	Page No.	Analyte	Page No.	Analyte	Page No.
RNA Pol II (Ser 2) .....	27	Substance P .....	21,24,25	TNF RII (soluble) (sTNFR2) .....	18,22
RNP (autoantibody) .....	18	Superoxide Dismutase 1 (soluble)		TPO .....	16,17,26
RNP/Sm (autoantibody) .....	18	(sSOD1) .....	21	TRAIL/TNFSF10 .....	16,17,20,26
RPS6 (Ser235/Ser236) .....	27	Superoxide Dismutase 2 (soluble)		Transglutaminase 2 (TGM2) .....	20,21
RPS6 (total) .....	27	(sSOD2) .....	21	TRAP5 .....	20
<b>S</b>		Survivin/BIRC5 (autoantibody) .....	20	TREM2 .....	21
S100B .....	21	Syntenin-1 (Syn-1) .....	20	<b>Troponin I (TnI)</b> .....	16,19,23,25
SARS-CoV-2 N .....	19	Syk (panTyr) .....	29	Troponin T (TnT) .....	20,23,25
SARS-CoV-2 RBD .....	19	<b>T</b>		TSC2 (total) .....	27
SARS-CoV-2 Spike S1 .....	19	T3 .....	24,26	TSC2 (Ser939) .....	27
SARS-CoV-2 Spike S2 .....	19	T4 .....	24,26	TSG101 .....	20
<b>SCF</b> .....	16,17,20,26	<b>TARC/CCL17</b> .....	16,17,22,26	TSH .....	19,22,23,24,26
Scl-70 (autoantibody) .....	18	Tau (Total) .....	21	<b>TSLP</b> .....	16,17,26
<b>Sclerostin (SOST)</b> .....	16,20,25	Tau (Total) (autoantibody) .....	21	TWEAK .....	20
<b>SDF-1/CXCL12</b> .....	16,17,24,26	Tau (Thr181) .....	21	<b>U</b>	
SDH .....	21,25	Testosterone .....	26	ucMGP .....	20
Secretin .....	19,23,24	TFF-3 .....	21,26	uPAR (soluble)/CD87 .....	20
Serum Amyloid A (SAA) .....	19	<b>TGF<math>\alpha</math></b> .....	16,17,20,22	Uromodulin .....	21
Serum Amyloid P (SAP) .....	19,21,23	TGF $\beta$ 1 .....	26	Uteroglobin .....	18
Sex Hormone Binding Globulin (SHBG)		TGF $\beta$ 2 .....	26	<b>V</b>	
.....	20	TGF $\beta$ 3 .....	26	VCAM-1 (soluble) .....	18,19,21
Siglec-7 .....	20	TGF $\beta$ RII (total) .....	29	VEGF .....	24,25
Siglec-9 .....	20	Thrombomodulin .....	20,23	<b>VEGF-A</b> .....	16,17,20,22,24,25,26
Sm (autoantibody) .....	18	Thrombospondin-1 (TSP-1) .....	18	<b>VEGF-C</b> .....	16,20,24
SMAD2 (Ser465/467) .....	29	Thrombospondin-2 (TSP-2) .....	20	<b>VEGF-D</b> .....	16,20,24
SMAD3 (Ser423/425) .....	29	TIE1 (panTyr) .....	28	VEGFR1/Flt-1 (panTyr) .....	28
SMAD4 (total) .....	29	TIE2 (panTyr) .....	28	VEGFR1/Flt-1 (soluble) .....	18,20,22
SOX2 (autoantibody) .....	20	Tie-2 (soluble) .....	20	VEGFR2/KDR/Flk-1 (panTyr) .....	28
Src (Tyr419) .....	29	TIM-3 .....	20,24	VEGFR2/KDR/Flk-1 (soluble) .....	18,20,22
SSA/Ro52 (autoantibody) .....	18	TIMP-1 .....	18,21,24,25	VEGFR3/Flt-4 (panTyr) .....	28
SSA/Ro60 (autoantibody) .....	18	TIMP-2 .....	18	VEGFR3/Flt-4 (soluble) .....	18,20,22
SSB/La (autoantibody) .....	18	TIMP-3 .....	18	<b>Y</b>	
STAT1 (Tyr701) .....	28,29	TIMP-4 .....	18	Yes (Tyr421) .....	29
STAT2 (Tyr690) .....	29	Tissue Factor (TF) .....	20	YKL40/CHI3L1 .....	18,20,22
STAT3 (total) .....	28,30	TLR-2 .....	20,24	<b>Z</b>	
STAT3 (Ser727) .....	28	TNFR1 (total) .....	28	ZAP-70 (panTyr) .....	29
STAT3 (Tyr705) .....	29,30	<b>TNF<math>\alpha</math></b> .....	16,17,19,20,22,23,24,25,26		
STAT5A/B (total) .....	28	TNF $\alpha$ (autoantibody) .....	18		
STAT5A/B (Tyr694/699) .....	28,29	<b>TNF<math>\beta</math>/Lymphotoxin-<math>\alpha</math> (LTA)</b> .....	16,17,22		
STAT6 (Tyr641) .....	29	TNF RI (soluble) (sTNFR1) .....	18,22		

**Analytes in blue font:** available in Screening and Qualified assays. **Analytes in black font:** available in Qualified assays only. Human pp. 16-21; Non-Human Primate p. 22; Mouse pp. 22-24; Rat pp. 24-25; Other/Multi-Species pp. 25-26; Cell Signaling kits pp. 27-30

## Multiplex Your Research

Explore all the ways researchers are using MILLIPLEX® multiplex assays at [SigmaAldrich.com/milliplex-learn](https://SigmaAldrich.com/milliplex-learn)



### What's In A Typical Qualified MILLIPLEX® Kit?



### What's In A Typical Qualified Cell Signaling MILLIPLEX® Kit?



### What's In A Typical Qualified Autoantibody MILLIPLEX® Kit?



# MILLIPLEX® PLEXpedition Screening Assays

## HUMAN

### Multiple Research Areas

#### Human Screening Assay

(Cat. No. HPLX1-115SP)

80 (Cat. No. HPLX1-115SP-PX80)◆

115 (Cat. No. HPLX1-115SP-PX)

xMAP® INTELLIFLEX® or FLEXMAP 3D® Instrument						
Luminex® 200™ Instrument						
MAGPIX® Instrument						
EGF◆	IL-2◆	MCP-1◆	ACTH◆	M-CSF◆	Amylin (Active)	MCP-2
FGF-2◆	IL-4◆	MIG◆	BDNF◆	MCP-3◆	BCA-1	MCP-4
Fractalkine◆	IL-5◆	MIP-1α◆	C-Peptide◆	MDC◆	BNP	MIP-16
G-CSF◆	IL-6◆	MIP-1β◆	Eotaxin◆	MIP-3α◆	CK-MB	MIP-3β
Ghrelin (Active)◆	IL-7◆	OPN◆	FABP4◆	MMP-1◆	GCP-2	MMP-3
GIP◆	IL-8◆	PDGF-AA◆	FLT3 Ligand◆	MMP-2◆	DKK1	MMP-10
Glucagon◆	IL-10◆	PDGF-AB/BB◆	GLP-1 Total◆	MMP-7◆	ENA-78	MMP-12
GM-CSF◆	IL-12 (p40)◆	Perforin◆	Granzyme A◆	MMP-9◆	Eotaxin-2	Myostatin
Granzyme B◆	IL-12 (p70)◆	RANTES◆	I-TAC◆	OPG◆	Eotaxin-3	NGF
GROα◆	IL-13◆	sCD40L◆	IL-3◆	PIGF◆	Erythropoietin (EPO)	NTproBNP
HGF◆	IL-15◆	SCF◆	IL-9◆	PP◆	FABP3	Osteocalcin
IFNα2◆	IL-17A◆	sFAS◆	IL-17F◆	PYY◆	FGF-21	Osteonectin
IFNγ◆	IL-18◆	sFASL◆	IL-21◆	TARC◆	FGF-23	SDF-1
IL-1α◆	IL-22◆	TGFα◆	IL-33◆	TNFβ◆	HB-EGF	SOST
IL-1β◆	IL-23◆	TNFα◆	Insulin◆	Troponin I◆	I-309	TPO
IL-1Ra◆	IP-10◆	TRAIL◆			IL-11	TSLP
	Leptin◆	VEGF-A◆			LIF	VEGF-C
						VEGF-D

### Configure Your Multiplex Kits with Ease

Check out our enhanced kit configurator where you can select your analytes for MILLIPLEX® qualified assays as well as our new MILLIPLEX® PLEXpedition screening kits. Design your kit at [SigmaAldrich.com/milliplex-order](http://SigmaAldrich.com/milliplex-order)



# MILLIPLEX® Qualified Assays

## HUMAN

### Immunology

#### Human Cytokine/Chemokine/ Growth Factor Panel A

☐ (Cat. No. HCYTA-60K)

38 (Cat. No. HCYTA-60K-PX38)♦

38 (Cat. No. HCYTA-60K-PXBK38)♦

48 (Cat. No. HCYTA-60K-PX48)

48 (Cat. No. HCYTA-60K-PXBK48)

sCD40L	IL-13♦
EGF♦	IL-15♦
Eotaxin/CCL11♦	IL-17A/CTLA8♦
FGF-2/FGF-basic	IL-17E/IL-25♦
Flt3 Ligand	IL-17F♦
Fractalkine/CX3CL1	IL-18♦
G-CSF♦	IL-22♦
GM-CSF♦	IL-27
GROα	IP-10/CXCL10♦
IFNα2♦	MCP-1/CCL2♦
IFNγ♦	MCP-3/CCL7
IL-1α♦	M-CSF♦
IL-1β♦	MDC/CCL22
IL-1RA♦	MIG/CXCL9♦
IL-2♦	MIP-1α/CCL3♦
IL-3♦	MIP-1β/CCL4♦
IL-4♦	PDGF-AA♦
IL-5♦	PDGF-AB/BB♦
IL-6♦	RANTES/CCL5♦▲*
IL-7♦	TGFα
IL-8/CXCL8♦	TNFα♦
IL-9	TNFβ/Lymphotoxin-α (LTA)♦
IL-10♦	VEGF-A♦
IL-12 (p40)♦	
IL-12 (p70)♦	

**Get both Human  
Panel A and Panel B  
premixed kits with  
one catalog number!**

**76-Plex (Two 38-plex  
premixed kits)**

Cat. No. HCYTPAB-76SK

**96-Plex (Two 48-plex  
premixed kits)**

Cat. No. HCYTPAB-96SK

Kits cannot be combined.

#### Human Cytokine/Chemokine/ Growth Factor Panel B

☐ (Cat. No. HCYTB-60K)

38 (Cat. No. HCYTB-60K-PX38)♦

38 (Cat. No. HCYTB-60K-PXBK38)♦

48 (Cat. No. HCYTB-60K-PX48)

48 (Cat. No. HCYTB-60K-PXBK48)

6Ckine/CCL21♦	IL-28A/IFNλ2♦
APRIL♦	IL-29 /IFNλ1♦
BAFF/Blys♦	IL-31♦
BCA-1/CXCL13♦	IL-33/NF-HEV (mature)♦
CCL28	IL-34
sCD137/4-1BB/ TNFRSF9♦	IL-35
CTACK/CCL27♦	IFNβ♦
CXCL6/GCP-2	IFNω♦
CXCL16	I-TAC/CXCL11♦
ENA-78/CXCL5♦	LIF♦
Eotaxin-2/CCL24/ MIPF-2♦	Lymphotoxin/XCL1
Eotaxin-3/CCL26♦	MCP-2/CCL8♦
sFAS/TNFRSF6♦	MCP-4/CCL13♦
sFASL♦	MIP-1δ /MIP-5/ CCL15♦
Granzyme A♦	MIP-3α/CCL20♦
Granzyme B♦	MIP-3β/CCL19
HMGB1♦	MIPF-1/CCL23
I-309/CCL1♦	Perforin♦
IL-11	SCF♦
IL-16♦	SDF-1/CXCL12♦
IL-20♦	TARC/CCL17♦
IL-21♦	TPO♦
IL-23♦	TRAIL/TNFSF10♦
IL-24	TSLP♦

#### Human High Sensitivity T Cell

☐ (Cat. No. HSTCMAG-28SK)

15 (Cat. No. HSTCMAG28SPMX13)♦

15 (Bulk Cat. No. HSTCMAG28PMX13BK)♦

21 (Cat. No. HSTCMAG28SPMX21)

21 (Bulk Cat. No. HSTCMAG28PMX21BK)

Fractalkine/CX3CL1	IL-12 (p70)♦
GM-CSF♦	IL-13♦
IFNγ♦	IL-17A/CTLA8
IL-1β♦	IL-21
IL-2♦	IL-23
IL-4♦	I-TAC/CXCL11
IL-5♦	MIP-1α/CCL3
IL-6♦	MIP-1β/CCL4
IL-7♦	MIP-3α/CCL20
IL-8/CXCL8♦	TNFα♦
IL-10♦	

#### 384-Well Human High Sensitivity T Cell

(Cat. No. HSTC384-28K)

21 (Cat. No. HSTCMAG384-PX21)

21 (Bulk Cat. No. HSTCMAG384PX21BK)

Fractalkine/CX3CL1	IL-12 (p70)
GM-CSF	IL-13
IFNγ	IL-17A/CTLA8
IL-1β	IL-21
IL-2	IL-23
IL-4	I-TAC/CXCL11
IL-5	MIP-1α/CCL3
IL-6	MIP-1β/CCL4
IL-7	MIP-3α/CCL20
IL-8/CXCL8	TNFα
IL-10	

#### Human Th17

(Cat. No. HTH17MAG-14K)

25 (Cat. No. HT17MG-14K-PX25)

25 (Bulk Cat. No. HT17MAG14PMX25BK)

GM-CSF	IL-17E/IL-25
IFNγ	IL-17F
IL-1β	IL-21
IL-2	IL-22
IL-4	IL-23
IL-5	IL-27
IL-6	IL-28A/IFNλ2
IL-9	IL-31
IL-10	IL-33/NF-HEV (mature)
IL-12 (p70)	MIP-3α/CCL20
IL-13	TNFα
IL-15	TNFβ/Lymphotoxin-α (LTA)
IL-17A/CTLA8	

#### Human CD8+ T Cell

☐ (Cat. No. HCD8MAG-15K)

17 (Cat. No. HCD8MAG15K17PMX)

17 (Bulk Cat. No. HCD8MAG15K17BK)

sCD137/4-1BB/ TNFRSF9	IL-4
sFAS/TNFRSF6	IL-5
sFasL	IL-6
GM-CSF	IL-10
Granzyme A	IL-13
Granzyme B	MIP-1α/CCL3
IFNγ	MIP-1β/CCL4
IL-2	Perforin
	TNFα

## MILLIPLEX® Immunology Kits

Profile more immune biomarkers faster with MILLIPLEX® multiplex immunoassays.  
Learn more at [SigmaAldrich.com/milliplex-immunology](http://SigmaAldrich.com/milliplex-immunology)



### Legend key for MILLIPLEX® kits

† Analytes which cannot be plexed together:  
– Active and total  
– Free and total

♦ Available in Cat. No. listed

▼ Premix panel only

Bulk indicates Space Saver Packaging

▲ These analytes cannot be plexed with other analytes in this panel in serum/plasma

▶ Requires a protease inhibitor during sample collection

■ Requires sample extraction

\*\* No standard/QC; antibody levels are reported as MFIs (Median Fluorescence Intensities)

● Serum/Plasma only

★ Tissue Culture samples only

^ Competitive assay format

☐ Available for custom premix

° Analyte requires a different sample dilution from others in panel

○ Analyte cannot be measured in serum

# Requires sample acidification

§ Analyte cannot be measured in plasma

u Urine only

**Human Interferon**

(Cat. No. HIFN-130K)

9 (Cat. No. HIFN-130K-PMX9)

IFNα2	IFNε
IFNβ	IFNω
IFNγ	IL-28A/IFNλ2
IFNγ Receptor 1 (IFNGR1)	IL-28B/IFNλ3
	IL-29/IFNλ1

**Human Soluble Cytokine Receptor**

(Cat. No. HSCRMAG-32K)

14 (Cat. No. HSCRMAG32KPX14)

14 (Bulk Cat. No. HSCRMAG32PMX14BK)

sCD30	sIL-6R
sEGFR/sHER1/ErbB1	sRAGE
sGP130	sTNF RI
sIL-1RI	sTNF RII
sIL-1RII	sVEGFR1/sFlt-1
sIL-2Ra	sVEGFR2/sKDR/sFlk-1
sIL-4R	sVEGFR3/sFlt-4

**Human Cytokine/Chemokine Panel III**

(Cat. No. HCYP3MAG-63K)

HCC-1/CCL14▲	M-CSF
IL-11	MIG/CXCL9
IL-29/IFNλ1	MIP-3α/CCL20
I-TAC/CXCL11	MIP-3β/CCL19
CXCL6/GCP-2	NAP-2/CXCL7▲
Lymphotactin/XCL1	

**Human Cytokine/Chemokine Panel IV**

20 (Cat. No. HCYP4MAG-64K)

20 (Cat. No. HCY4MG-64K-PX20)

20 (Bulk Cat. No. HCP4MG64KPX20BK)

BAFF/Blys	IL-28B/IFNλ3
BRAK/CXCL14	IL-32α
CCL28	IL-34
CXCL16	IL-35
HCC-4/CCL16	IL-36β/IL-1F8
HMGB1●	IL-37/IL-1F7
IFNβ	IL-38/IL-1F10
IL-14/α-Taxilin	MIP-4/PARC/CCL18
IL-19	MPIF/CCL23
IL-24	YKL40/CHI3L1

**Human IL-18 Singleplex**

(Cat. No. HIL18MAG-66K)

IL-18

**Human Complement Expanded Panel 1**

20 (Cat. No. HCMPEX1-19K)

Adipsin/Factor D	C9
C2	Factor I
C4b	Mannose-Binding Lectin (MBL)
C5	Properdin
C5a	

**Human Complement Panel 2**

20 (Cat. No. HCMP2MAG-19K)

C1q	C4
C3	Factor B
C3b	Factor H

**Human Complement C5b-9 Singleplex**

(Cat. No. HC5B9-140K)

C5b-9

**Human MMP Panel 1**

(Cat. No. HMMP1MAG-55K)

MMP-3	MMP-13
MMP-12	

**Human MMP Panel 2**

(Cat. No. HMMP2MAG-55K)

MMP-1	MMP-9
MMP-2	MMP-10
MMP-7	

**Human TIMP Panel 1 (Serum/Plasma samples)**

(Cat. No. HTMP1MAG-54K)

TIMP-1	TIMP-2
--------	--------

**Human TIMP Panel 2 (Cell culture samples)**

(Cat. No. HTMP2MAG-54K)

TIMP-1	TIMP-3
TIMP-2	TIMP-4

**Human Fibrosis Panel 1**

(Cat. No. HFIB1-100K)

COMP	Uteroglobin
IL-18BPα	

**Immune Response****Human Autoimmune Autoantibody IgG\*\***

(Cat. No. HAIAB-10K)

QUALITATIVE KIT

β2-Glycoprotein	PM/Sci 100
C1q	Proteinase 3
CENP-A	Ribosomal P
CENP-B	RNP
Jo-1	RNP/Sm
Ku	Sci-70
Mi-2	Sm
Myeloperoxidase (MPO)	SSA/Ro52
PCNA	SSA/Ro60
PL-12 (Alanyl-tRNA Synthetase)	SSB/La

**Human Cytokine Autoantibody Expanded IgG, IgA, and IgM \*\***

IgG (Cat. No. HCYTABG-17K)

IgA (Cat. No. HCYTABA-17K)

IgM (Cat. No. HCYTABM-17K)

QUALITATIVE KIT

BAFF/Blys	IL-8/CXCL8
G-CSF	IL-10
GM-CSF	IL-12 (p40)
IFNα2	IL-15
IFNβ	IL-17A/CTLA8
IFNγ	IL-17F
IFNω	IL-18
IL-1α	IL-22
IL-2	Osteopontin
IL-3	PF4
IL-4	TNFα
IL-6	

**Human Sepsis Panel 1**

(Cat. No. HSP1MAG-63K)

sFAS/TNFRSF6	MIF
sFasL	PAI-1 (total)
sICAM-1	sVCAM-1

**Human Sepsis Panel 2**

(Cat. No. HSP2MAG-63K)

Granzyme B	MIP-1α/CCL3
HSP70	MIP-1β/CCL4
IL-1α	MMP-8
IL-8/CXCL8	

**Human Sepsis Panel 3**

(Cat. No. HSP3MAG-63K)

Lactotransferrin (LTF)	Resistin
Neutrophil Elastase-2 (ELA2)	Thrombospondin-1 (TSP-1)
NGAL/Lipocalin-2	

**MILLIPLEX® Autoantibody Profiling**

Discover the benefits of multiplexing autoantibodies at  
[SigmaAldrich.com/milliplex-autoab](https://SigmaAldrich.com/milliplex-autoab)



**Human Immunoglobulin Isotyping**

(Cat. No. HGAMMAG-301K)

IgA	IgG3
IgG1	IgG4
IgG2	IgM

**Human IgE – Singleplex**

(Cat. No. HGAMMAG-303E)

IgE

**Virology****AAV Serotyping Panel IgG\*\*****NEW**

(Cat. No. AAVSERG-230K)

**QUALITATIVE KIT**

AAV1	AAV6
AAV2	AAV8
AAV5	AAV9

**SARS-CoV-2 Antigen Panel 1 IgA\*\***

(Cat. No. HC19SERA1-85K)

**QUALITATIVE KIT**

SARS-CoV-2 N	SARS-CoV-2 Spike S1
SARS-CoV-2 RBD	SARS-CoV-2 Spike S2

**SARS-CoV-2 Antigen Panel 1 IgG\*\***

(Cat. No. HC19SERG1-85K)

**QUALITATIVE KIT**

SARS-CoV-2 N	SARS-CoV-2 Spike S1
SARS-CoV-2 RBD	SARS-CoV-2 Spike S2

**SARS-CoV-2 Antigen Panel 1 IgM\*\***

(Cat. No. HC19SERM1-85K)

**QUALITATIVE KIT**

SARS-CoV-2 N	SARS-CoV-2 Spike S1
SARS-CoV-2 RBD	SARS-CoV-2 Spike S2

**For Research Use Only. Not For Use In Diagnostic Procedures.****Metabolism/Endocrinology****Human Adipokine Panel 1 (Serum/Plasma samples)**

(Cat. No. HADK1MAG-61K)

Adiponectin	PAI-1 (total)
Adipsin/Factor D	Resistin
NGAL/Lipocalin-2	

**Human Adipokine Panel 2 (Serum/Plasma samples)**

(Cat. No. HADK2MAG-61K)

IL-1β	Leptin
IL-6	MCP-1/CCL2
IL-8/CXCL8	NGF
Insulin	TNFα

**Human Adipocyte (Cell culture samples)**

(Cat. No. HADCYMAG-61K)

Adiponectin	MCP-1/CCL2
HGF	NGF
IL-1β	PAI-1 (total)
IL-6	Resistin
IL-8/CXCL8	TNFα
Leptin	

**Human Metabolic Hormone V3**

(Cat. No. HMH3-34K)

Amylin (active) †‡	Insulin
Amylin (total) †‡	Leptin
C-Peptide	MCP-1/CCL2
Ghrelin (active) †‡	Pancreatic Polypeptide (PP)
GIP (total)	PYY (total)
GLP-1 (active) †‡	Secretin
GLP-1 (total) †‡	TNFα
Glucagon †‡	
IL-6	

**Human Myokine**

(Cat. No. HMYOMAG-56K)

Apelin	IL-15
BDNF	Irisin
Erythropoietin (EPO)	LIF
FABP3	Myostatin/GDF8
FGF-21	Oncostatin-M (OSM)
Fractalkine/CX3CL1	Osteocrin (OSTN)/Musclin
FSTL1	Osteonectin/SPARC
IL-6	

**Human Aging Panel 1**

(Cat. No. HAGE1MAG-20K)

CTACK/CCL27	IL-6
FGF-21	IL-10*
GDF-11	IL-18
GDF15	Jag1
GnRH	Leptin

**Human Liver Protein**

(Cat. No. HLPPMAG-57K)

α-Fetoprotein (AFP)	FGF-19
ANGPTL3	FGF-21
ANGPTL4	FGF-23
ANGPTL6	HGF
FABP1	

**Human IGF Binding Protein**

(Cat. No. HIGFBMAG-53K)

IGFBP1	IGFBP5
IGFBP2	IGFBP6
IGFBP3*	IGFBP7
IGFBP4	

**Human IGF**

(Cat. No. HIGFMAG-52K)

IGF-1	IGF-2
-------	-------

**Human Pituitary Panel 1**

(Cat. No. HPTP1MAG-66K)

ACTH	FSH
Agouti-Related Protein (AgRP)	GH
	LH
CNTF	TSH

**Cardiovascular****Human CVD Panel 1**

(Cat. No. HCVD1MAG-67K)

BNP	LIGHT
CK-MB	NT proBNP
CXCL6/GCP-2	Oncostatin-M (OSM)
CXCL16	Placental Growth Factor (PIGF)
Endocan-1 (ESM-1)	Troponin I (TnI)
FABP3	
FABP4	

**Human CVD Panel 2**

(Cat. No. HCVD2MAG-67K)

ADAMTS13	Myoglobin
D-dimer <sup>s</sup>	NGAL/Lipocalin-2
GDF15	sP-Selectin
sICAM-1	Serum Amyloid A
Myeloperoxidase (MPO)	sVCAM-1

**Human CVD Panel 3 (Acute Phase)**

(Cat. No. HCVD3MAG-67K)

α-1-Acid Glycoprotein (AGP)	Haptoglobin
α-2-Macroglobulin	sL-Selectin
Adipsin/Factor D	Platelet Factor 4 (PF4)/CXCL4
CRP	Serum Amyloid P (SAP)
Fetuin A	
Fibrinogen <sup>u</sup>	

**Legend key for MILLIPLEX® kits**

† Analytes which cannot be plexed together:  
– Active and total  
– Free and total

♦ Available in Cat. No. listed

▼ Premix panel only

Bulk indicates Space Saver Packaging

▲ These analytes cannot be plexed with other analytes in this panel in serum/plasma

‡ Requires a protease inhibitor during sample collection

■ Requires sample extraction

\*\* No standard/QC; antibody levels are reported as MFIs (Median Fluorescence Intensities)

● Serum/Plasma only

★ Tissue Culture samples only

^ Competitive assay format

Ⓢ Available for custom premix

° Analyte requires a different sample dilution from others in panel

○ Analyte cannot be measured in serum

# Requires sample acidification

<sup>s</sup> Analyte cannot be measured in plasma

<sup>u</sup> Urine only

**Human CVD Panel 4**

(Cat. No. HCVD4MAG-67K)

sCD31/sPECAM-1	Thrombomodulin
sE-Selectin	Tissue Factor (TF)
Follistatin (FST)	Troponin T (TnT)
Pentraxin-3 (PTX3)	

**Human CVD Panel 6**

(Cat. No. HCVD6MAG-67K)

sCD14	MCAM/MUC18
DPP4	Progranulin (pGRN)
Endostatin	ucMGP
LRG1	

**Human Apolipoprotein**

(Cat. No. APOMAG-62K)

Apo AI	Apo CII
Apo AII	Apo CIII
Apo B	Apo E

**Bone****Human Bone**

(Cat. No. HBNMAG-51K)

ACTH	Osteocalcin (OC)
DKK1	Osteopontin (OPN)
FGF-23	Osteoprotegerin (OPG)
IL-1 $\beta$	PTH
IL-6	Sclerostin (SOST)
Insulin	TNF $\alpha$
Leptin	

**Human RANKL – Singleplex**

(Cat. No. HRNKLMAG-51K-01)

RANKL
-------

**Cancer****Human Immuno-Oncology Checkpoint Protein Panel 1**

(Cat. No. HCKP1-11K)

① (Cat. No. HCKP1-11K-PX17)

② (Bulk Cat. No. HCKP1-11K-PXBK17)

BTLA	HVEM
CD27	ICOS
CD28	LAG-3
CD40	PD-1
CD80/B7-1	PD-L1
CD86/B7-2	PD-L2
CTLA-4/CD152	TIM-3
GITR	TLR-2
GITRL	

**Human Immuno-Oncology Checkpoint Protein Panel 2**

(Cat. No. HCKP2-11K)

4-1BBL/TNFSF9	FGL1/Hepassocin
5'-NT/CD73	Galectin-1
APRIL	Galectin-3
Arginase-1	Granulysin
B7-H2/ICOSL	Granzyme B
B7-H3/CD276	IDO1
B7-H4/VTCN1	MICA
B7-H5/VISTA	MICB
B7-H6	Nectin-2
BAFF/BLyS	Nectin-4
CD25/IL-2R $\alpha$	OX40/CD134
CD30/TNFRSF8	Perforin
CD40L	PVR/CD155
CD137/4-1BB	Siglec-7
CD226/DNAM-1	Siglec-9
E-Cadherin	

**Human Cancer Autoantibody IgG\*\***

(Cat. No. HCABMAG-13K)

**QUALITATIVE KIT**

CCNB1/Cyclin B1	IGF2BP2/IMP2
CTAG1B/NY-ESO-1	IGF2BP3/IMP3
ENO1	Mucin-1 (MUC1)
Galectin-1 (GAL1)	P16-INK4a
Galectin-3 (GAL3)	p53
HER2/ErbB2	SOX2
HIF-1 $\alpha$	Survivin/BIRC5
HSP60	

**Human Exosome Characterization**

(Cat. No. HEXSM-170K)

① (Cat. No. HEXSM-170K-PMX)

② (Bulk Cat. No. HEXSM-170K-BKPMX)

Argonaute-2 (Ago2)*	Flotillin-1 (FLOT-1)
Calreticulin (CALR)	GAPDH
CD9	Syntenin-1 (Syn-1)
CD63	TSG101
CD81	

\*The Ago2 bead is static and will always be included in the kit format.

**Human Circulating Cancer Biomarker Panel 1**

(Cat. No. HCCBP1MAG-58K)

$\alpha$ -Fetoprotein (AFP)	IL-8/CXCL8
CA125	Leptin
CA15-3	MIF
CA19-9	Osteopontin (OPN)
CEA	Prolactin
CYFRA21-1	PSA (free) <sup>†</sup>
sFAS/TNFRSF6	PSA (total) <sup>†</sup>
sFasL	SCF
FGF-2/FGF-basic	TGF $\alpha$
HCG $\beta$	TNF $\alpha$
HE4	TRAIL/TNFSF10
HGF	VEGF-A
IL-6	

**Human Circulating Cancer Biomarker Panel 3**

(Cat. No. HCCBP3MAG-58K)

Cathepsin D	Melanoma Inhibitory Activity (MIA)
Ferritin	Myeloperoxidase (MPO)
Fibroblast Activation Protein (FAP)	Sex Hormone Binding Globulin (SHBG)
Galectin-3	
IGFBP3 <sup>o</sup>	

**Human Circulating Cancer Biomarker Panel 4**

(Cat. No. HCCB4MAG-58K)

ALDH1A1	Kallikrein-6
Carbonic Anhydrase 9 (CA9)	Mesothelin
CD44	Midkine
EpCAM	NCAM1/L1CAM/CD171
Hepsin	Transglutaminase 2 (TGM2)

**Human Cancer/Metastasis Biomarker Panel 1**

(Cat. No. HCMBMAG-22K)

DKK1	Osteoprotegerin (OPG)
GDF15	Periostin
Neuron-specific Enolase (NSE)	TRAP5
Osteonectin/SPARC	TWEAK
	YKL40/CHI3L1

**Human Angiogenesis/Growth Factor Panel 1**

(Cat. No. HAGP1MAG-12K)

Angiopoietin-2	HB-EGF
BMP-9	HGF
EGF	IL-8/CXCL8
Endoglin	Leptin
Endothelin-1	Placental Growth Factor (PlGF)
FGF-1/FGF-acidic	VEGF-A
FGF-2/FGF-basic	VEGF-C
Follistatin (FST)	VEGF-D
G-CSF	

**Human Angiogenesis Panel 2**

(Cat. No. HANG2MAG-12K)

Angiostatin/Kringle	sIL-6R $\alpha$
sAXL	sNeuropilin-1 (sNRP-1)
sCD31/sPECAM-1	Osteopontin (OPN)
sc-Kit/sStem Cell Factor Receptor (SCFR)	PDGF-AB/BB
sE-Selectin	Thrombospondin-2 (TSP-2)
sEGFR/sHER1/sErbB1	sTIE-2
sHER2/sEGFR2/sErbB2	suPAR
sHER3/sEGFR3/sErbB3	sVEGFR1/sFlt-1
sHGFR/sc-Met	sVEGFR2/sKDR/sFlk-1
	sVEGFR3/sFlt-4

**MILLIPLEX® Cancer Kits**

See how our kits are advancing cancer and immuno-oncology research at [SigmaAldrich.com/milliplex-cancer](https://SigmaAldrich.com/milliplex-cancer)



## Neuroscience

### Human Amyloid Beta and Tau (CSF samples)

(Cat. No. HNABTMAG-68K)

Amyloid beta 1-40	pTau (Thr181)
Amyloid beta 1-42	Tau (total)

### Human Neuroscience Panel 1 (CSF samples)

(Cat. No. HNS1MAG-95K)

α-Synuclein	PARK5/UCLH1
Glial Fibrillary Acidic Protein (GFAP)	PARK7/DJ1
Neuron-specific Enolase (NSE)	Transglutaminase 2 (TGM2)

### Human Neuroscience Panel 2

(Cat. No. HNS2MAG-95K)

Angiogenin (ANG) <sup>o</sup>	Ferritin
ApoE4 <sup>o</sup>	Neurogranin (NRGN)
FABP3	TREM2

### Human Neurodegenerative Autoantibody IgG\*\* **NEW**

(Cat. No. HNDGAB-220K)

#### QUALITATIVE KIT

α-synuclein	DRD2
Aβ42	ELAVL4 (HuD)
AChR	GFAP
AGNA (SOX1)	MBP
Ago2 (Su)	mGluR1
AMPA-R	MOG
Amphiphysin	NF-L
ANNA2 (Ri)/NOVA1	NMDAR1
AQP4	NRXN3
C1q	PCA1 (Yo)/CDR2
CRMP5	PNMA1 (Ma1)
CRYAB	tTau
DPPX	

### Human Neurodegenerative Disease Panel 1

(Cat. No. HNDG1MAG-36K)

α-2-Macroglobulin	Complement Factor C3
Apo AI	
Apo CIII	Complement Factor H (CFH)
Apo E	

### Human Neurodegenerative Disease Panel 2

(Cat. No. HNDG2MAG-36K)

α-1-Antitrypsin (A1AT)	MIP-4/PARC/CCL18
C4	PEDF
CRP	Serum Amyloid P (SAP)

### Human Neurodegenerative Disease Panel 3

(Cat. No. HNDG3MAG-36K)

BDNF	PAI-1 (total)
Cathepsin D	PDGF-AA
sICAM-1	PDGF-AB/BB
Myeloperoxidase (MPO)	RANTES/CCL5
sNCAM	sVCAM-1

### Human Neurodegenerative Disease Panel 4 (CSF samples)

(Cat. No. HNDG4MAG-36K)

Amyloid beta 1-40	sRAGE
Amyloid beta 1-42	S100B
GDNF	

### Human Neurological Disorders Panel 3

(Cat. No. HND3MAG-39K)

Angiotensinogen (AGT)	Osteopontin (OPN)
Contactin-1	Soluble Superoxide Dismutase 1 (sSOD1)
Fetuin A <sup>o</sup>	Soluble Superoxide Dismutase 2 (sSOD2)
Kallikrein-6	

### Human Neuropeptide **▲** **^**

(Cat. No. HNPMMAG-35K)

α-MSH	Oxytocin
β-Endorphin	Substance P
Neurotensin	

### Human Circadian Stress **▲** **^**

(Cat. No. HNCSTMAG-35K)

Cortisol	Melatonin
----------	-----------

## Toxicity

### Human Kidney Injury Panel 1 (Urine samples)

(Cat. No. HKI1MAG-99K)

Calbindin	KIM-1
Collagen IV	Renin
GSTa	TFF-3
IP-10/CXCL10	TIMP-1

### Human Kidney Injury Panel 2 (Urine samples)

(Cat. No. HKI2MAG-99K)

α-1-Microglobulin	EGF
Albumin	NGAL/Lipocalin-2
Clusterin	Osteopontin (OPN)
Cystatin C	

### Human Kidney Injury Panel 4 (Serum/Plasma samples)

(Cat. No. HKI4MAG-99K)

EGF	Osteopontin (OPN)
FABP1	PTH
IP-10/CXCL10	Renin
KIM-1	

### Human Kidney Injury Panel 5 (Serum/Plasma samples)

(Cat. No. HKI5MAG-99K)

α-1-Microglobulin	Osteoactivin
Collagen IV	TIMP-1
NGAL/Lipocalin-2	Uromodulin

### Human Kidney Injury Panel 6 (Serum/Plasma samples)

(Cat. No. HKI6MAG-99K)

β-2-Microglobulin	Cystatin C
Clusterin	RBP4

### Human Liver Injury

(Cat. No. HLINJMAG-75K)

5'NT/CD73	MDH1
ARG1	SDH
GSTa	

## Explore Biomarkers for Alzheimer's Disease Research

Learn how to combine multiplex and high sensitivity assay analysis for AD biomarker studies at [SigmaAldrich.com/immunoassays-AD](https://www.sigmaaldrich.com/immunoassays-AD)



### Legend key for MILLIPLEX® kits

† Analytes which cannot be plexed together:  
– Active and total  
– Free and total

◆ Available in Cat. No. listed

▼ Premix panel only

Bulk indicates Space Saver Packaging

▲ These analytes cannot be plexed with other analytes in this panel in serum/plasma

▶ Requires a protease inhibitor during sample collection

■ Requires sample extraction

\*\* No standard/QC; antibody levels are reported as MFIs (Median Fluorescence Intensities)

● Serum/Plasma only

★ Tissue Culture samples only

^ Competitive assay format

◼ Available for custom premix

◦ Analyte requires a different sample dilution from others in panel

○ Analyte cannot be measured in serum

# Requires sample acidification

§ Analyte cannot be measured in plasma

u Urine only

## PRIMATE

## Immunology

Non-Human Primate Cytokine/  
Chemokine /Growth Factor  
Panel A

- (Cat. No. PRCYTA-40K)  
 ● (Cat. No. PRCYTA-40K-PX38)◆  
 ● (Cat. No. PRCYTA-40K-BK38)◆  
 ● (Cat. No. PRCYTA-40K-PX48)  
 ● (Cat. No. PRCYTA-40K-BK48)

BCA-1/CXCL13	IL-15◆
sCD137/4-1BB/ TNFRSF9◆	IL-16
sCD40L◆	IL-17A/CTLA8◆
Eotaxin/CCL11	IL-17E/IL-25
sFASL◆	IL-18◆
FGF-2/FGF-basic	IL-21◆
Fractalkine/CX3CL1	IL-22◆
G-CSF◆	IL-23◆
GM-CSF◆	IL-28A/IFNλ2
Granzyme A◆	IL-31
Granzyme B◆	IL-33/NF-HEV (mature)◆
IFNα2◆	IP-10/CXCL10◆
IFNγ◆	I-TAC/CXCL11◆
IL-1α	MCP-1/CCL2◆
IL-1β◆	MIG/CXCL9◆
IL-1RA◆	MIP-1α/CCL3◆
IL-2◆	MIP-1β/CCL4◆
IL-4◆	MIP-3α/CCL20◆
IL-5◆	Perforin◆
IL-6◆	RANTES/CCL5◆▲◆
IL-7◆	TGFα◆
IL-8/CXCL8◆	TNFα◆
IL-10◆	TNFβ/LTA
IL-12 (p70)◆	VEGF-A◆

Metabolism/  
EndocrinologyNon-Human Primate  
Metabolic Hormone

(Cat. No. NHPMHMAG-45K)

Amylin (active)◆	Insulin
C-Peptide	Leptin
Ghrelin (active)◆	MCP-1/CCL2
GIP (total)	Pancreatic Polypeptide (PP)
GLP-1 (active)◆	PYY (total)
Glucagon◆	
IL-6	

Non-Human Primate Pituitary  
Panel 1

(Cat. No. NHPPT1MG-46K)

ACTH	FSH
Agouti-Related Protein (AgRP)	GH
CNTF	LH
	TSH

## MOUSE

## Immunology

Mouse Cytokine/Chemokine/  
Growth Factor Expanded  
Panel 1 **NEW**

- (Cat. No. MCYT1-190K)  
 ● (Cat. No. MCYT1-190K-SPX)◆  
 ● (Cat. No. MCYT1-190K-SPXBK)◆  
 ● (Cat. No. MCYT1-190K-LPX)  
 ● (Cat. No. MCYT1-190K-LPXBK)

BAFF	IL-12p40◆
Betacellulin	IL-12p70◆
CCL25/TECK	IL-13◆
sCD137/4-1BB/ TNFRSF9	IL-15◆
CHI3L1	IL-16
CXCL16	IL-17A/CTLA8◆
EGF◆	IL-17F◆
Eotaxin/CCL11◆	IL-18◆
Erythropoietin (EPO)	IL-20
Exodus-2/ CCL21/6CKine	IL-22◆
sFas/TNFRSF6	IL-28B/IFNλ3◆
sFasL	IL-31
FGF-2◆	IL-33◆
FLT3L	IP-10/CXCL10◆
Fractalkine/CX3CL1	KC/GRO/CINC-1/ CXCL1◆
G-CSF◆	LIF◆
GDF-15	LIX◆
GM-CSF◆	MDC/CCL22
Granzyme B	MCP-1/CCL2◆
sICAM-1	MCP-2
IFNα◆	MCP-3
IFNβ◆	MCP-5/CCL12
IFNγ◆	M-CSF◆
IL-1α◆	MIG/CXCL9◆
IL-1β◆	MIP-1α/CCL3◆
IL-2◆	MIP-1β/CCL4◆
IL-3◆	MIP-2/CXCL2◆
IL-4◆	MIP-3α/CCL20
IL-5◆	MIP-3β/CCL19
IL-6◆	sRAGE
IL-7◆	RANTES/CCL5◆
IL-9◆	TARC/CCL17
IL-10◆	TNFα◆
IL-11	VEGF-A◆

## Mouse High Sensitivity T Cell

- (Cat. No. MHSTCMAG-70K)  
 ● (Cat. No. MHSTCMAG-70KPMX)  
 ● (Bulk Cat. No. MHSTCMAG-70KPBK)

GM-CSF	IL-10
IFNγ	IL-12 (p70)
IL-1α	IL-13
IL-1β	IL-17A/CTLA8
IL-2	KC/GRO/CINC-1/ CXCL1
IL-4	LIX
IL-5	MCP-1/CCL2
IL-6	MIP-2/CXCL2
IL-7	TNFα

## Mouse Th17

- (Cat. No. MTH17MAG-47K)  
 ● (Cat. No. MT17MAG47K-PX25)  
 ● (Bulk Cat. No. MT17MAG47PMX25BK)

sCD40L	IL-17E/IL-25
GM-CSF	IL-17F
IFNγ	IL-21
IL-1β	IL-22
IL-2	IL-23
IL-4	IL-27
IL-5	IL-28B/IFNλ3
IL-6	IL-31
IL-10	IL-33/NF-HEV (mature)
IL-12 (p70)	MIP-3α/CCL20
IL-13	TNFα
IL-15	TNFβ/Lymphotoxin-α (LTA)
IL-17A/CTLA8	

## Mouse CD8+ T Cell

- (Cat. No. MCD8MAG-48K)  
 ● (Cat. No. MCD8MAG48K-PX15)  
 ● (Bulk Cat. No. MCD8MAG48KPX15BK)

sCD137/4-1BB/ TNFRSF9	IL-4
sFas/TNFRSF6	IL-5
sFasL	IL-6
GM-CSF	IL-10
Granzyme B	IL-13
IFNγ	MIP-1β/CCL4
IL-2	RANTES/CCL5
	TNFα

Mouse Soluble Cytokine  
Receptor

- (Cat. No. MSCRMAG-42K)

sCD30	sRAGE
sGP130	sTNF RI
sIL-1RI	sTNF RII
sIL-1RII	sVEGFR1/sFit-1
sIL-2Ra	sVEGFR2/sKDR/sFlk-1
sIL-4R	sVEGFR3/sFit-4
sIL-6R	

Mouse MMP Panel 1  
(Serum/Plasma samples)

(Cat. No. MMMP1MAG-79K)

MMP-2	MMP-8
MMP-3	

Mouse MMP Panel 2  
(Serum/Plasma samples)

(Cat. No. MMMP2MAG-79K)

proMMP-9	MMP-12
----------	--------

## Squeak Out The Best Results

Measure up to 68 mouse targets in one assay. Discover more details about the largest mouse cytokine multiplex assay at [SigmaAldrich.com/milliplex-mouse](https://www.sigmaaldrich.com/milliplex-mouse).



## Mouse MMP Panel 3 (Cell culture samples)

(Cat. No. M3MMP3MAG-79K)

MMP-2	proMMP-9
MMP-3	MMP-12
MMP-8	

## Immune Response

### Mouse Immunoglobulin Isotyping

☑ (Cat. No. MGAMMAG-300K)

IgA	IgG2b
IgG1	IgG3
IgG2a	IgM

### Mouse IgE – Singleplex

(Cat. No. MGAMMAG-300E)

IgE
-----

## Metabolism/ Endocrinology

### Mouse Adipokine (Serum/Plasma samples)

(Cat. No. MADKMAG-71K)

IL-6	PAI-1 (total)
Insulin	Resistin
Leptin	TNFα
MCP-1/CCL2	

### Mouse Adipocyte (Cell culture samples)

(Cat. No. MADCYMAG-72K)

Adiponectin	PAI-1 (total)
IL-6	Resistin
Leptin	TNFα
MCP-1/CCL2	

### Mouse Adiponectin – Singleplex (Serum/Plasma samples)

(Cat. No. MADPNMAG-70K-01)

Adiponectin
-------------

## Mouse Metabolic Hormone Expanded

(Cat. No. MMHE-44K)

Amylin (active) †	Leptin
C-Peptide 2	MCP-1/CCL2
Ghrelin (active) †	Pancreatic Polypeptide (PP)
GIP (total)	PYY (total)
GLP-1 (active) †	Resistin
GLP-1 (total) †	Secretin
Glucagon †	TNFα
IL-6	
Insulin	

### Mouse Myokine

(Cat. No. MMYOMAG-74K)

BDNF	Irisin
Erythropoietin (EPO) ★	LIF
FGF-21	Myostatin/GDF8
Follistatin-like Protein 1 (FSTL1)	Oncostatin-M (OSM)
IL-6	Osteocrin (OSTN)/Musclin
IL-15	Osteonectin/SPARC

### Mouse Aging Panel 1

(Cat. No. MAGE1MAG-25K)

CTACK/CCL27	Jag1
FGF-21	Leptin
GnRH	Notch1
IL-6	TNFα

### Mouse Pituitary

(Cat. No. MPTMAG-49K)

ACTH	LH
BDNF	Prolactin
FSH	TSH
GH	

### Mouse TSH – Singleplex **NEW**

(Cat. No: RMTSH-200K)

(Bulk Cat. No. RMTSH-200K-10PK)

TSH
-----

## Cardiovascular

### Mouse CVD Panel 1

(Cat. No. MCVD1MAG-77K)

sCD31/sPECAM-1	ProMMP-9
sE-Selectin	sP-Selectin
sICAM-1	Thrombomodulin
PAI-1 (total)	

### Mouse CVD Panel 2

(Cat. No. MCVD2MAG-77K)

sCD40L	Oncostatin M (OSM)
CXCL16	Placental Growth Factor 2
Endocan-1 (ESM-1)	Troponin I (TnI)
Follistatin (FST)	Troponin T (TnT)
LIGHT	

### Mouse Acute Phase Panel 2

(Cat. No. MAP2MAG-76K)

α-1-Acid Glycoprotein (AGP)	CRP
α-2-Macroglobulin	Haptoglobin
Adipsin/Factor D	Serum Amyloid P (SAP)

## Cancer

### Humanized Mouse **NEW**

☑ (Cat. No. HUMU-210K)

41 (Cat. No. HUMU-210K-PMX)

43 (Cat. No. HUMU-210K-PMXBK)

G-CSF (Human)	IL-12p40 (Human)
G-CSF (Mouse)	IL-12p40 (Mouse)
GM-CSF (Human)	IL-12p70 (Human)
GM-CSF (Mouse)	IL-12p70 (Mouse)
IFNγ (Human)	IL-15 (Human)
IFNγ (Mouse)	IL-17A/CTLA8 (Human)
IL-1α (Human)	IL-17A/CTLA8 (Mouse)
IL-1β (Human)	IL-18 (Human)
IL-1β (Mouse)	IL-18 (Mouse)
IL-2 (Human)	IP-10/CXCL10 (Human)
IL-2 (Mouse)	IP-10/CXCL10 (Mouse)
IL-3 (Human)	MCP-1/CCL2 (Human)
IL-3 (Mouse)	MCP-1/CCL2 (Mouse)
IL-4 (Human)	M-CSF (Human)
IL-5 (Human)	M-CSF (Mouse)
IL-5 (Mouse)	MIG/CXCL9 (Human)
IL-6 (Human)	MIG/CXCL9 (Mouse)
IL-6 (Mouse)	TNFα (Human)
IL-7 (Human)	TNFα (Mouse)
IL-8 (Human)	
KC/GRO/CINC-1/CXCL1 (Mouse)	
IL-10 (Human)	

### Legend key for MILLIPLEX® kits

† Analytes which cannot be plexed together:  
– Active and total  
– Free and total

◆ Available in Cat. No. listed

▼ Premix panel only

Bulk indicates Space Saver Packaging

▲ These analytes cannot be plexed with other analytes in this panel in serum/plasma

‡ Requires a protease inhibitor during sample collection

■ Requires sample extraction

\*\* No standard/QC; antibody levels are reported as MFIs (Median Fluorescence Intensities)

● Serum/Plasma only

★ Tissue Culture samples only

^ Competitive assay format

☑ Available for custom premix

◦ Analyte requires a different sample dilution from others in panel

○ Analyte cannot be measured in serum

# Requires sample acidification

§ Analyte cannot be measured in plasma

u Urine only

## Mouse Angiogenesis / Growth Factor Panel 1

(Cat. No. MAGPMAG-24K)

sALK-1	IL-6
Amphiregulin	IL-17A/CTLA8
Angiopoietin-2 ▲	KC/GRO/CINC-1/ CXCL1
Betacellulin ▲	Leptin
sCD31/sPECAM-1 ▲	MCP-1/CCL2
EGF	MIP-1α/CCL3
Endoglin	Placental Growth Factor 2
Endothelin-1	Prolactin
sFasL	SDf-1/CXCL12
FGF-2/FGF-basic	TNFα
Follistatin (FST)	VEGF-A
G-CSF	VEGF-C
HGF	VEGF-D
IL-1β	

## Mouse Immuno-Oncology Checkpoint Protein Panel 1

☐ (Cat. No. MCKP1-110K)

⊗ (Cat. No. MCKP1-110K-PX28)

⊗ (Bulk Cat No. MCKP1-110K-PBK28)

4-1BBL/TNFSF9	Galectin-1
5'-NT/CD73	Galectin-3
B7-H2/ICOSL	GITR
B7-H3/CD276	Granzyme B
BCA-1/CXCL-13	HVEM
BTLA	IFNγ
CD137/4-1BB	IL-10
CD226/DNAM-1	LAG-3
CD25/IL-2Ra	PD-1
CD27	PD-L1
CD40	PD-L2
CD80/B7-1	TIM-3
CTLA-4/CD152	TLR-2
E-Cadherin	TNFα

## Neuroscience

### Mouse Amyloid Beta

(Cat. No. MABMAG-83K)

Amyloid beta 1-40	Amyloid beta 1-42
-------------------	-------------------

### Mouse Neuropeptide ■ ▲

(Cat. No. RMNPMAG-83K)

α-MSH	Oxytocin
β-Endorphin	Substance P
Neurotensin	

## Toxicity

### Mouse Kidney Injury Panel 1

(Cat. No. MKI1MAG-94K)

β-2-Microglobulin <sup>u</sup>	Renin
IP-10/CXCL10	TIMP-1
KIM-1	VEGF-A <sup>u</sup>

### Mouse Kidney Injury Panel 2

(Cat. No. MKI2MAG-94K)

Clusterin	NGAL/Lipocalin-2
Cystatin C	Osteopontin (OPN)
EGF	

## RAT

## Immunology

### Rat Cytokine/Chemokine

☐ (Cat. No. RECYTMAG-65K)

⊗ (Cat. No. RECYMAG65K27PMX)

⊗ (Bulk Cat. No. RECYMAG65PMX27BK)

EGF	IL-10
Eotaxin/CCL11	IL-12 (p70)
Fractalkine/CX3CL1	IL-13
G-CSF	IL-17A/CTLA8
GM-CSF	IL-18
KC/GRO/CINC-1/ CXCL1	IP-10/CXCL10
IFNγ	Leptin
IL-1α	LIX
IL-1β	MCP-1/CCL2
IL-2	MIP-1α/CCL3
IL-4	MIP-2/CXCL2
IL-5	RANTES/CCL5
IL-6	TNFα
	VEGF

## Metabolism/ Endocrinology

### Rat Adipokine (Serum/Plasma samples)

(Cat. No. RADPKMAG-80K)

IL-1β	MCP-1/CCL2
IL-6	PAI-1 (total)
Insulin	TNFα
Leptin	

### Rat Adipocyte (Cell culture samples)

(Cat. No. RADPCMAG-82K)

Adiponectin	MCP-1/CCL2
IL-1β	PAI-1 (total)
IL-6	TNFα
Leptin	

### Rat Metabolic Hormone Expanded

(Cat. No. RMHE-120K)

Amylin (active) <sup>▶</sup>	Insulin
C-Peptide 2	Leptin
Ghrelin (active) <sup>▶</sup>	MCP-1/CCL2
GIP (total)	Pancreatic Polypeptide (PP)
GLP-1 (active) <sup>▶</sup> <sup>▶</sup>	PYY (total)
GLP-1 (total) <sup>▶</sup> <sup>▶</sup>	Secretin
Glucagon <sup>▶</sup>	TNFα
IL-6	

### Rat Myokine

(Cat. No. RMYOMAG-88K)

BDNF	IL-15
Erythropoietin (EPO)	Irisin
FGF-21	LIF
Follistatin-like Protein 1 (FSTL1)	Myostatin/GDF8
Fractalkine/CX3CL1	Osteocrin (OSTN)/ Musclin
IL-6	Osteonectin/SPARC

### Rat Pituitary

(Cat. No. RPTMAG-86K)

ACTH	LH
BDNF	Prolactin
FSH	TSH
GH	

### Rat Stress Hormone ■

(Cat. No. RSHMAG-69K)

ACTH	Melatonin <sup>^</sup>
Corticosterone <sup>^</sup>	

### Rat Thyroid

(Cat. No. RTHYMAG-30K)

T3 <sup>^</sup>	TSH
T4 <sup>^</sup>	

### Rat TSH – Singleplex **NEW**

(Cat. No. RMTSH-200K)

(Bulk Cat. No. RMTSH-200K-10PK)

TSH
-----

Quality in Every MILLIPLEX® Kit

We pride ourselves on our quality R&D, support, manufacturing, and QC.

Read more at: [SigmaAldrich.com/milliplex-quality](https://SigmaAldrich.com/milliplex-quality)



## Cardiovascular

### Rat Cardiac Injury Panel 1

(Cat. No. RCI1MAG-87K)

Cardiac Troponin I (cTnI)	FABP3
Cardiac Troponin T (cTnT)	Follistatin-like Protein 1 (FSTL1)
Creatine Kinase Muscle (CKM)	Myosin Light Chain 3 (MYL3)
	TIMP-1

### Rat Vascular Injury Panel 1 (Serum/Plasma samples)

(Cat. No. RV1MAG-26K)

Caveolin-1	IL-6
Connective Tissue Growth Factor (CTGF)	MCP-1/ CCL2
KC/GRO/CINC-1/ CXCL1	PAI-1 (total)
	TIMP-1
	TNF $\alpha$
	VEGF

### Rat Vascular Injury Panel 2 (Serum/Plasma samples)

(Cat. No. RV2MAG-26K)

Adiponectin	sICAM-1
sE-Selectin	

### Rat Vascular Injury Panel 3 (Serum/Plasma samples)

(Cat. No. RV3MAG-26K)

$\alpha$ -1-Acid Glycoprotein (AGP)	Haptoglobin
$\alpha$ -2-Macroglobulin (A2M)	

## Bone

### Rat Bone Panel 1 (Serum/Plasma samples)

(Cat. No. RBN1MAG-31K)

ACTH	Leptin
DKK1	Osteoprotegerin (OPG)
FGF-23	PTH
Insulin	Sclerostin (SOST)

## Neuroscience

### Rat Neuropeptide ■ ^

(Cat. No. RMNPMAG-83K)

$\alpha$ -MSH	Oxytocin
$\beta$ -Endorphin	Substance P
Neurotensin	

## Toxicity

### Rat Kidney Toxicity Panel 1 (Urine samples)

(Cat. No. RKTX1MAG-37K)

Clusterin	Osteopontin (OPN)
GST $\alpha$ ^	TIMP-1
IP-10/CXCL10	VEGF-A
KIM-1	

### Rat Kidney Toxicity Panel 2 (Urine samples)

(Cat. No. RKTX2MAG-37K)

$\alpha$ -1-Acid Glycoprotein (AGP)	Cystatin C
Albumin^	EGF
$\beta$ -2-Microglobulin	NGAL/ Lipocalin-2

### Rat Liver Injury

(Cat. No. RLI1MAG-92K)

5'NT/CD73	GST $\alpha$
ARG1	SDH
GOT1	

## COMPANION/ AGRICULTURAL

## Immunology

### Bovine Cytokine/Chemokine Panel 1

⊙ (Cat. No. BCYT1-33K)  
 15 (Cat. No. BCYT1-33K-PX15)  
 15 (Bulk Cat. No. BCYT1-33K-PXBK15)

IFN $\gamma$	IL-36RA/IL-1F5
IL-1 $\alpha$	IP-10/CXCL10
IL-1 $\beta$	MCP-1/CCL2
IL-4	MIP-1 $\alpha$ /CCL3
IL-6	MIP-1 $\beta$ /CCL4
IL-8/CXCL8	TNF $\alpha$
IL-10	VEGF-A
IL-17A/CTLA8	

### Bovine Acute Phase Protein

(Cat. No. BAPP1-150K)

Haptoglobin	Fibrinogen ⊙
-------------	--------------

### Canine Cytokine/Chemokine

⊙ (Cat. No. CCYTOMAG-90K)  
 13 (Cat. No. CCYTMG-90K-PX13)  
 13 (Bulk Cat. No. CCYTMAG90KPX13BK)

GM-CSF	IL-15
IFN $\gamma$	IL-18
IL-2	IP-10/CXCL10
IL-6	KC-like
IL-7	MCP-1/ CCL2
IL-8/CXCL8	TNF $\alpha$
IL-10	

### Chicken Cytokine/Chemokine

⊙ (Cat. No. GCYT1-16K)  
 12 (Cat. No. GCYT1-16K-PX12)  
 12 (Cat. No. GCYT1-16K-PXBK12)

IFN $\alpha$	IL-21
IFN $\gamma$	M-CSF
IL-2	MIP-1 $\beta$ /CCL4
IL-6	MIP-3 $\alpha$ /CCL20
IL-10	RANTES/CCL5
IL-16	VEGF

## MILLIPLEX® Veterinary Medicine and Animal Health Kits

Fetch the latest in animal health research with our growing selection of multiplex assays.

Discover more at [SigmaAldrich.com/vetmed](http://SigmaAldrich.com/vetmed)



### Legend key for MILLIPLEX® kits

† Analytes which cannot be plexed together:  
 – Active and total  
 – Free and total

◆ Available in Cat. No. listed

▼ Premix panel only

Bulk indicates Space Saver Packaging

▲ These analytes cannot be plexed with other analytes in this panel in serum/plasma

▶ Requires a protease inhibitor during sample collection

■ Requires sample extraction

\*\* No standard/QC; antibody levels are reported as MFIs (Median Fluorescence Intensities)

● Serum/Plasma only

★ Tissue Culture samples only

^ Competitive assay format

⊙ Available for custom premix

◦ Analyte requires a different sample dilution from others in panel

⊙ Analyte cannot be measured in serum

# Requires sample acidification

§ Analyte cannot be measured in plasma

u Urine only

**Equine Cytokine/Chemokine**

- (Cat. No. EQCYTMAG-93K)
- 23 (Cat. No. EQCYTMG-93KPX23)
- 23 (Cat. No. EQCTMG93KPX23BK)

Eotaxin/CCL11	IL-6
FGF-2/FGF-basic	IL-8/CXCL8
Fractalkine/CX3CL1	IL-10
G-CSF	IL-12 (p70)
GM-CSF	IL-13
GRO	IL-17A/CTLA8
IFN $\gamma$	IL-18
IL-1 $\alpha$	IP-10/CXCL10
IL-1 $\beta$	MCP-1/CCL2
IL-2	RANTES/CCL5
IL-4	TNF $\alpha$
IL-5	

**Feline Cytokine/Chemokine ▼**

- 19 (Cat. No. FCYTMAG-20K-PMX)
- 19 (Bulk Cat. No. FCYTMAG20KPX19BK)

**NON-CONFIGURABLE KIT**

sFAS/TNFRSF6	IL-13
Flt3 Ligand	IL-18
GM-CSF	KC/GRO/CINC-1/ CXCL1
IFN $\gamma$	
IL-1 $\beta$	MCP-1/CCL2
IL-2	PDGF-BB
IL-4	RANTES/CCL5
IL-6	SCF
IL-8/CXCL8	SDF-1/CXCL12
IL-12 (p40)	TNF $\alpha$

**Ovine Cytokine/Chemokine Panel 1**

- (Cat. No. SCYT1-91K)
- 14 (Cat. No. SCYT-91K-PX14)
- 14 (Bulk Cat. No. SCYT-91K-PXBK14)

IFN $\gamma$	IL-17A/CTLA8
IL-1 $\alpha$	IL-36RA/IL-1F5
IL-1 $\beta$	IP-10/CXCL10
IL-4	MIP-1 $\alpha$ /CCL3
IL-6	MIP-1 $\beta$ /CCL4
IL-8/CXCL8	TNF $\alpha$
IL-10	VEGF-A

**Porcine Cytokine/Chemokine**

- (Cat. No. PCYTMAG-23K)
- 13 (Cat. No. PCYTMG-23K-13PX)
- 13 (Bulk Cat. No. PCYTMAG23PMX13BK)

GM-CSF	IL-6
IFN $\gamma$	IL-8/CXCL8
IL-1 $\alpha$	IL-10
IL-1 $\beta$	IL-12
IL-1Ra	IL-18
IL-2	TNF $\alpha$
IL-4	

**Porcine Acute Phase Protein**

(Cat. No. PAPP1-160K)

CRP	Haptoglobin
-----	-------------

**Metabolism/  
Endocrinology****Canine Gut Hormone**

(Cat. No. CGTMAG-98K)

Amylin (total) †	Insulin
Ghrelin (active) †	Leptin
GIP (total)	Pancreatic Polypeptide (PP)
GLP-1 (active) †	PYY (total)
Glucagon	

**Canine Pituitary Expanded Panel**

(Cat. No. CANPIT-96K)

ACTH	LH
FSH	Prolactin
GH	TSH

**Toxicity****Canine Kidney Toxicity Expanded Panel 1 (Urine samples)**

(Cat. No. CKT1MAG-97K)

Clusterin	MCP-1/CCL2
Cystatin C	NGAL/Lipocalin-2
IL-8/CXCL8	Osteopontin (OPN)
KIM-1	

**Canine Kidney Toxicity Panel 2 (Urine samples)**

(Cat. No. CKT2MAG-97K)

Albumin	RBP4
$\beta$ -2-Microglobulin	TFF-3

**MULTI-SPECIES****Immunology****Multi-Species TGF $\beta$  – Singleplex #**

(Cat. No. TGFBMAG-64K-01)  
(Bulk Cat. No. TGFBMAG-64K-01BK)  
Species: C, E, F, H, M, NHP, Por, R, guinea pig, hamster, rabbit

TGF $\beta$ 1**Multi-Species TGF $\beta$  – 3 Plex ▼ #**

(Cat. No. TGFBMAG-64K-03)  
Species: H, M, NHP, R, guinea pig, hamster, mini pig; additionally, TGF- $\beta$ 1 and TGF- $\beta$ 2 can be detected in the serum of C, E, and rabbit

**NON-CONFIGURABLE KIT**

TGF $\beta$ 1	TGF $\beta$ 3
TGF $\beta$ 2	

**Metabolism/  
Endocrinology****Multi-Species Hormone ■ ^**

(Cat. No. MSHMAG-21K)  
Species: C, E, F, H, M, NHP, Por, R, guinea pig, hamster, rabbit

Cortisol	T3
Estradiol	T4
Progesterone	Testosterone <b>NEW</b>

**KITS TO BE PHASED OUT****Human Cytokine/Chemokine Panel II**

- (Cat. No. HCYP2MAG-62K)
- 23 (Cat. No. HCP2MAG-62K-PX23)
- 23 (Bulk Cat. No. HCP2MAG62KPX23BK)

6Ckine/CCL21/ Exodus-2	IL-28A/IFN $\lambda$ 2
BCA-1/CXCL13	IL-33/NF-HEV (mature)
CTACK/CCL27	LIF
ENA-78/CXCL5	MCP-2/CCL8
Eotaxin-2/CCL24/ MPIF-2	MCP-4/CCL13
Eotaxin-3/CCL26	MIP-1 $\delta$ /MIP-5/CCL15
I-309/CCL1	SCF
IL-16	SDF-1/CXCL12
IL-20	TARC/CCL17
IL-21	TPO
IL-23	TRAIL/TNFSF10
	TSLP

**Legend key for MILLIPLEX® kits**

- † Analytes which cannot be plexed together:
  - Active and total
  - Free and total
- ◆ Available in Cat. No. listed
- ▼ Premix panel only
- Bulk indicates Space Saver Packaging
- ▲ These analytes cannot be plexed with other analytes in this panel in serum/plasma

- ‡ Requires a protease inhibitor during sample collection
- Requires sample extraction
- \*\* No standard/QC; antibody levels are reported as MFIs (Median Fluorescence Intensities)
- Serum/Plasma only
- ★ Tissue Culture samples only

- ^ Competitive assay format
- Available for custom premix
- Analyte requires a different sample dilution from others in panel
- Analyte cannot be measured in serum
- # Requires sample acidification
- § Analyte cannot be measured in plasma
- u Urine only

# Cell Signaling MILLIPLEX® Assays

## Akt/mTOR (Phosphoprotein) – 11 Plex

(Cat. No. 48-611MAG) AB2 ▼ **NON-CONFIGURABLE KIT**

Analyte	Total	Phosphorylated	
Akt/PKB	✓ (Ser473)	H, M, R	
GSK3α	✓ (Ser21)	H, M, R	
GSK3β	✓ (Ser9)	H, M, R	
IGF1R	✓ (Tyr1135/1136)	H, M	
IR	✓ (Tyr1162/1163)	H	
IRS1	✓ (Ser636)	H, M, R	
mTOR	✓ (Ser2448)	H, M, R	
p70S6 Kinase	✓ (Thr412)	H, M, R	
PTEN	✓ (Ser380)	H, M, R	
RPS6	✓ (Ser235/236)	H, M, R	
TSC2	✓ (Ser939)	H, M, R	

## Akt/mTOR (Total) – 11 Plex

(Cat. No. 48-612MAG) AB2 ▼ **NON-CONFIGURABLE KIT**

Analyte	Total	Phosphorylated	
Akt/PKB	✓	H, M, R	
GSK3α	✓	H, M, R	
GSK3β	✓	H, M, R	
IGF1R	✓	H, M, R	
IR	✓	H, R	
IRS1	✓	H, M, R	
mTOR	✓	H, M, R	
p70S6 Kinase	✓	H, M, R	
PTEN	✓	H, M, R	
RPS6	✓	H, M, R	
TSC2	✓	H, M, R	

## Early Apoptosis – 7 Plex

(Cat. No. 48-669MAG) AB2 ▼ **NON-CONFIGURABLE KIT**

Analyte	Total	Phosphorylated	
Akt/PKB	✓ (Ser473)	H, M, R	
BAD	✓ (Ser112)	H, M	
Bcl-2	✓ (Ser70)	H	
Active Caspase-8 (Asp384)	✓	H	
Active Caspase-9 (Asp315)	✓	H	
JNK/SAPK1	✓ (Thr183/Tyr185)	H, M, R	
p53	✓ (Ser46)	H	

## Human Bcl-2 Family Apoptosis Panel 1 - 6 Plex

(Cat. No. 48-682MAG) AB1 ▼ **NON-CONFIGURABLE KIT**

Analyte	Total	Phosphorylated	
BAD	✓	✓ (Ser112)	H
BAX	✓		H
Bcl-xL/BAD (interaction)	✓		H
BIM	✓		H
Mcl-1/BIM (interaction)	✓		H

## Human Bcl-2 Family Apoptosis Panel 2 - 4 Plex

(Cat. No. 48-683MAG) AB1 ▼ **NON-CONFIGURABLE KIT**

Analyte	Total	Phosphorylated	
Bcl-2	✓		H
Bcl-xL	✓		H
Mcl-1	✓		H
NOXA/Mcl-1 (interaction)	✓		H

## Human Cell Health - 16 Plex **NEW**

(Cat. No. 48-691MAG) AB2 ▼ **NON-CONFIGURABLE KIT**

Analyte	Total	Phosphorylated	
CHOP	✓		H
Cleaved PARP	✓		H
Complex IV	✓		H, M, R
Cyclin B1	✓		H
eIF4B		✓ (Ser422)	H, M, R
GRP78	✓		H, M, R
HIF-1α	✓		H
Histone H2A.x		✓ (Ser139)	H
Histone H3		✓ (Ser10)	H
HSP70	✓		H
Ki-67	✓		H
LC3B	✓		H, M, R
NF-κB		✓ (Ser536)	H
p53		✓ (Ser15)	H
Polyubiquitin K48-linkage	✓		H, M
RNA Pol II		✓ (Ser2)	H, M, R

## Learn More About Cancer and Metastasis Signaling Pathways

Read about all of the kits that can elucidate your signaling research at [SigmaAldrich.com/milliplex-cancer-cs](http://SigmaAldrich.com/milliplex-cancer-cs)



- Can be plexed with other 2 Plexes
  - \* Cannot plex with other phospho Akt
  - ▼ Premix panel only
- AB1:** Uses Assay Buffer 1      **H** Human  
**AB2:** Uses Assay Buffer 2      **M** Mouse  
**R** Rat

**Human DNA Damage/Genotoxicity – 7 Plex**(Cat. No. 48-621MAG) AB1 ▼ **NON-CONFIGURABLE KIT**

Analyte	Total	Phosphorylated	
ATR	✓		H
Chk1		✓ (Ser345)	H, M, R
Chk2		✓ (Thr68)	H
H2A.X		✓ (Ser139)	H, M, R
MDM2	✓		H, M, R
p21	✓		H
p53		✓ (Ser15)	H

**MAPK/SAPK (Phosphoprotein) – 10 Plex**(Cat. No. 48-660MAG) AB2 ▼ **NON-CONFIGURABLE KIT**

Analyte	Total	Phosphorylated	
ATF2		✓ (Thr71)	H, M
c-Jun		✓ (Ser73)	H, M, R
Erk/MAPK 1/2		✓ (Thr185/Tyr187)	H, M, R
HSP27		✓ (Ser78)	H
JNK/SAPK1		✓ (Thr183/Tyr185)	H, M, R
MEK1		✓ (Ser222)	H, M, R
MSK1		✓ (Ser212)	H, M
p38/SAPK2A/B		✓ (Thr180/Tyr182)	H, M, R
p53		✓ (Ser15)	H
STAT1		✓ (Tyr701)	H, M

**Human RTK (Phosphoprotein)****(Choose analytes that meet your needs)**

(Cat. No. HPRTKMAG-01K) AB1

Analyte	Total	Phosphorylated	
c-Kit		(pan Tyr)	H
c-Met/HGFR		(pan Tyr)	H
ErbB1/EGFR		(pan Tyr)	H
ErbB2/HER2		(pan Tyr)	H
ErbB3/HER3		(pan Tyr)	H
ErbB4/HER4		(pan Tyr)	H
FGFR1		(pan Tyr)	H
Flt3		(pan Tyr)	H
IGF1R		(pan Tyr)	H
M-CSFR		(pan Tyr)	H
PDGFRβ		(pan Tyr)	H
TIE1		(pan Tyr)	H
TIE2		(pan Tyr)	H
VEGFR1/Flt-1		(pan Tyr)	H
VEGFR2/KDR/Flk-1		(pan Tyr)	H
VEGFR3/Flt-4		(pan Tyr)	H, M, R

**Multi-Pathway (Phosphoprotein) – 9 Plex**(Cat. No. 48-680MAG) AB2 ▼ **NON-CONFIGURABLE KIT**

Analyte	Total	Phosphorylated	
Akt/PKB		✓ (Ser473)	H, M, R
CREB		✓ (Ser133)	H, M, R
Erk/MAPK 1/2		✓ (Thr185/Tyr187)	H, M, R
JNK/SAPK1		✓ (Thr183/Tyr185)	H, M, R
NFκB		✓ (Ser536)	H, M, R
p38/SAPK2A/B		✓ (Thr180/Tyr182)	H, M, R
p70S6 Kinase		✓ (Thr412)	H, M, R
STAT3		✓ (Ser727)	H, M, R
STAT5A/B		✓ (Tyr694/699)	H, M, R

**Multi-Pathway (Total) – 9 Plex**(Cat. No. 48-681MAG) AB2 ▼ **NON-CONFIGURABLE KIT**

Analyte	Total	Phosphorylated	
Akt/PKB	✓		H, M, R
CREB	✓		H, M, R
Erk/MAPK 1/2	✓		H, M, R
JNK/SAPK1	✓		H, M, R
NFκB	✓		H, M, R
p38/SAPK2A/B	✓		H, M, R
p70S6 Kinase	✓		H, M, R
STAT3	✓		H, M, R
STAT5A/B	✓		H, M, R

**NFκB – 6 Plex**(Cat. No. 48-630MAG) AB1 ▼ **NON-CONFIGURABLE KIT**

Analyte	Total	Phosphorylated	
c-Myc	✓		H
FADD		✓ (Ser194)	H
IκBα		✓ (Ser32)	H
IKKα/β		✓ (Ser177/181)	H
NFκB		✓ (Ser536)	H, M
TNFR1	✓		H

**Protein Translation – 6 Plex**(Cat. No. 48-655MAG) AB2 ▼ **NON-CONFIGURABLE KIT**

Analyte	Total	Phosphorylated	
eIF2a		✓ (Ser51)	H, M, R
eIF-4B		✓ (Ser422)	H, M, R
eIF-4E		✓ (Ser209)	H, M, R
eIF-4G		✓ (Ser1108)	H, M, R
4E-BP1	✓	✓ (Thr37/46)	H, M, R

**Human Ras-Raf Oncoprotein — 6 Plex**(Cat. No. 48-684MAG) AB2 ▼ **NON-CONFIGURABLE KIT**

Analyte	Total	Phosphorylated	
BRAF		✓ (Ser446)	H, M, R
CRAF		✓ (Ser338)	H, M, R
MEK1		✓ (Ser217/221)	H, M, R
Ras	✓		H, M, R
RasG12D	✓		H
RasG12V	✓		H

**Src Family Kinase Active Site (Phosphoprotein) — 8 Plex**(Cat. No. 48-650MAG) AB2 ▼ **NON-CONFIGURABLE KIT**

Analyte	Total	Phosphorylated	
Blk		✓ (Tyr389)	H
Fgr		✓ (Tyr412)	H, R
Fyn		✓ (Tyr420)	H, M, R
Hck		✓ (Tyr411)	H, M
Lck		✓ (Tyr394)	H, M, R
Lyn		✓ (Tyr397)	H, R
Src		✓ (Tyr419)	H, M, R
Yes		✓ (Tyr421)	H, M, R

**STAT (Phosphoprotein) — 5 Plex**(Cat. No. 48-610MAG) AB2 ▼ **NON-CONFIGURABLE KIT**

Analyte	Total	Phosphorylated	
STAT1		✓ (Tyr701)	H, M
STAT2		✓ (Tyr690)	H
STAT3		✓ (Tyr705)	H, M, R
STAT5A/B		✓ (Tyr694/699)	H, M, R
STAT6		✓ (Tyr641)	H

**T-Cell Receptor (Phosphoprotein) — 7 Plex**(Cat. No. 48-690MAG) AB2 ▼ **NON-CONFIGURABLE KIT**

Analyte	Total	Phosphorylated	
CD3ε		✓ (pan Tyr)	H
CREB		✓ (Ser133)	H, M, R
Erk/MAPK 1/2		✓ (Thr185/Tyr187)	H, M, R
LAT		✓ (pan Tyr)	H
Lck		✓ (pan Tyr)	H, M, R
Syk		✓ (pan Tyr)	H
ZAP-70		✓ (pan Tyr)	H

**TGFβ — 6 Plex**(Cat. No. 48-614MAG) AB2 ▼ **NON-CONFIGURABLE KIT**

Analyte	Total	Phosphorylated	
Akt/PKB		✓ (Ser473)	H, M, R
Erk/MAPK 1/2		✓ (Thr185/Tyr187)	H, M, R
SMAD2		✓ (Ser465/467)	H, M, R
SMAD3		✓ (Ser423/425)	H, M, R
SMAD4	✓		H, M, R
TGFβRII	✓		H

**Akt Phospho/Total — 2 Plex**(Cat. No. 48-618MAG) AB2 ▼ \* ●● **NON-CONFIGURABLE KIT**

Analyte	Total	Phosphorylated	
Akt/PKB		✓ (Ser473)	H, M, R
Akt/PKB	✓		H, M, R

**Akt1 Phospho/Total — 2 Plex**(Cat. No. 48-631MAG) AB2 ▼ \* ●● **NON-CONFIGURABLE KIT**

Analyte	Total	Phosphorylated	
Akt1		✓ (Ser473)	H, M, R
Akt1	✓		H, M, R

**Akt2 Phospho/Total — 2 Plex**(Cat. No. 48-632MAG) AB2 ▼ \* ●● **NON-CONFIGURABLE KIT**

Analyte	Total	Phosphorylated	
Akt2		✓ (Ser474)	H, M, R
Akt2	✓		H, M, R

**CREB Phospho/Total — 2 Plex**(Cat. No. 48-628MAG) AB2 ▼ ●● **NON-CONFIGURABLE KIT**

Analyte	Total	Phosphorylated	
CREB		✓ (Ser133)	H, M, R
CREB	✓		H, M, R

**Erk/MAPK 1/2 Phospho/Total — 2 Plex**(Cat. No. 48-619MAG) AB2 ▼ ●● **NON-CONFIGURABLE KIT**

Analyte	Total	Phosphorylated	
Erk/MAPK 1/2		✓ (Thr185/Tyr187)	H, M, R
Erk/MAPK 1/2	✓		H, M, R

- Can be plexed with other 2 Plexes
- \* Cannot plex with other phospho Akt
- ▼ Premix panel only

**AB1:** Uses Assay Buffer 1  
**AB2:** Uses Assay Buffer 2

**H** Human  
**M** Mouse  
**R** Rat

**JNK Phospho/Total – 2 Plex**(Cat. No. 48-622MAG) AB2 ▼ ●● **NON-CONFIGURABLE KIT**

Analyte	Total	Phosphorylated	
JNK/SAPK1		✓ (Thr183/Tyr185)	H, M, R
JNK/SAPK1	✓		H, M, R

**mTOR Phospho/Total – 2 Plex**(Cat. No. 48-625MAG) AB2 ▼ ●● **NON-CONFIGURABLE KIT**

Analyte	Total	Phosphorylated	
mTOR		✓ (Ser2448)	H, M, R
mTOR	✓		H, M

**p38 Phospho/Total – 2 Plex**(Cat. No. 48-624MAG) AB1 or AB2 ▼ ●● **NON-CONFIGURABLE KIT**

Analyte	Total	Phosphorylated	
p38/SAPK2A/B		✓ (Thr180/Tyr182)	H, M, R
p38/SAPK2A/B	✓		H, M, R

**STAT3 Phospho/Total – 2 Plex**(Cat. No. 48-623MAG) AB2 ▼ ●● **NON-CONFIGURABLE KIT**

Analyte	Total	Phosphorylated	
STAT3		✓ (Tyr705)	H, M, R
STAT3	✓		H, M, R

**MAPmate™ Singleplex Loading Control Assays**

Plex loading control MAPmate™ assays into existing MILLIPLEX® Cell Signaling Panels. Our Cell Signaling Buffer and Detection Kit (Cat. No. 48-602MAG), may be purchased if additional buffers are required.

MAPmate™ Kits	Species Homology (Buffer)	Cat. No.
β-Tubulin (total)	H, M, R (AB1 & AB2)	46-713MAG
GAPDH (total)	H (AB2)	46-667MAG

- Can be plexed with other 2 Plexes
- \* Cannot plex with other phospho Akt
- ▼ Premix panel only
- AB1:** Uses Assay Buffer 1
- AB2:** Uses Assay Buffer 2
- H** Human
- M** Mouse
- R** Rat



# Luminex® Multiplexing Platforms

## Driving Assay Consistency

Combined with the largest portfolio of multiplex analytes available, we provide you the power of Luminex® xMAP® technology, the most trusted, widely used platform for biomarker screening and protein analysis. As a Luminex® partner, we are a preferred distributor of Luminex® instruments, accessories, and software.

## Luminex® xMAP® technology offers many advantages compared to other immunoassay methods:

- **Multiplexing:** Data generated simultaneously is less prone to user error, enabling the end-user to construct cleaner data sets to explore multiple parameters.
- **Low sample volume:** With minimal hands-on time, screen multiple analytes in a single sample using a maximum of 25 µL per well.
- **Magnetic bead-based format:** Responds rapidly and efficiently to a magnetic field, enabling better and faster washing techniques, including high-throughput washing options.
- **Reproducibility:** High-volume production of xMAP® microspheres allows assay standardization that solid-phased flat arrays cannot provide.
- **Speed/high-throughput:** Simultaneously measure the concentration of a large number of different analytes in a single sample, in 96- or 384-well format, to do your work faster, gaining early and comprehensive data.



## Specifications

Instruments	xMAP® INTELLIFLEX® DR-SE*	xMAP® INTELLIFLEX®	FLEXMAP 3D®	Luminex® 200™
<b>Cat. No.</b>	<b>INTELLIFLEX-DRSE</b>	<b>INTELLIFLEX-RU0</b>	<b>40-014</b>	<b>40-012</b>
<b>Optics Hardware</b>	Lasers/APDs/PMTs	Lasers/APDs/PMTs	Lasers/APDs/PMTs	Lasers/APDs/PMTs
<b>Technology</b>	Flow-based	Flow-based	Flow-based	Flow-based
<b>Multiplexing</b>	Up to 500	Up to 500	Up to 500	Up to 100 (80 on MagPlex® microspheres)
<b>Dynamic Range**</b>	≥5.5 logs (RP1) ≥4.5 logs (RP2)	≥5.5 logs (RP1)	≥4.5 logs (RP1)	≥3.5 logs (RP1)
<b>Read Time</b>	96-well in ~20 min 384-well in ~75 min	96-well in ~20 min 384-well in ~75 min	96-well in ~20 min 384-well in ~75 min	96-well in ~45 min
<b>Applications</b>	Protein/nucleic acid	Protein/nucleic acid	Protein/nucleic acid	Protein/nucleic acid
<b>Automation-Compatible Hardware</b>	Front and side eject	Front eject only	Front eject only	Front eject only
<b>Reporter Laser</b>	532 nm (green) 405 nm (violet)	532 nm (green)	532 nm (green)	532 nm (green)
<b>IQ/OQ</b>	Yes	Yes	Yes	Yes
<b>21 CFR Compliance</b>	Yes	Yes	Yes	Yes
<b>Automation</b>	Yes	Yes	Yes	Yes
<b>Data Analysis</b>	Belysa® software	Belysa® software	xPONENT® basic + Belysa® software	xPONENT® basic + Belysa® software
<b>Plate Format</b>	96-well and 384-well	96-well and 384-well	96-well and 384-well	96-well
<b>Footprint (Linear Bench Space, including PC)</b>	58.4 cm x 61 cm x 76.2 cm	58.4 cm x 61 cm x 76.2 cm	110 cm x 62 cm x 63 cm	115 cm x 60 cm x 50 cm
<b>Weight</b>	54.4 kg (120 lbs)	54.4 kg (120 lbs)	77.1 kg (170 lbs)	49 kg (113 lbs)

\*DR-SE = dual reporter side eject; \*\*RP = reporter

Luminex® 200™ and FLEXMAP 3D® systems run on the Luminex® xPONENT® 4.3 data acquisition platform; the xMAP® INTELLIFLEX® systems run on INTELLIFLEX 1.0. All systems provide a consistent experience, from data input to results, no matter which instrument is used. All software adapts to fit the capabilities of each platform.

## Next Generation Multiplexing

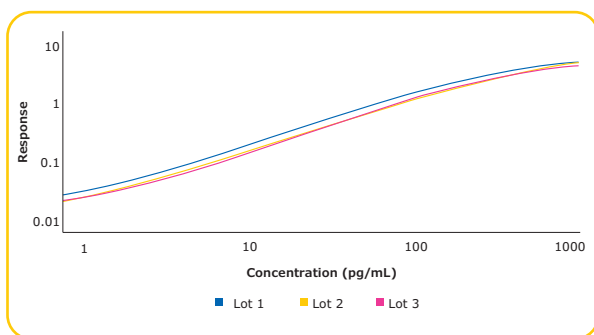
Harness the power of the xMAP® INTELLIFLEX® system at [SigmaAldrich.com/intelliflex](http://SigmaAldrich.com/intelliflex)



## Conferma<sup>®</sup> ELISAs

Conferma<sup>®</sup> ELISAs are developed with a focus on critical reagents to deliver assays with excellent detectability, sensitivity, and lot-to-lot consistency.

Analyte	Std. Range (pg/mL)	LLOQ (Curve) (pg/mL)	Cat. No.
IL-6 (Human)	1.17 – 150	1.17	EZIL6-98K
IL-8 (Human)	0.82 – 200	0.82	EZHIL8-100K
MCP-1 (Human)	7.81 – 1,000	7.81	EZMCP1-99KRM
TNF- $\alpha$ (Human)	1.65 – 400	1.65	EZHTNFA-150K



Three lots of the TNF- $\alpha$  Conferma<sup>®</sup> ELISAs were evaluated for parallelism. Variation was minimal demonstrating consistent lot-to-lot performance.

Curve	Parallelism
Lot 2 vs. Lot 1	0.983
Lot 3 vs. Lot 1	0.992

### ELISAs Designed For Consistency

Get details on Conferma<sup>®</sup> ELISA performance and see the difference for yourself at: [SigmaAldrich.com/conferma](https://SigmaAldrich.com/conferma)



## Millipore<sup>®</sup> Brand ELISAs

Metabolic/Endocrine/ELISAs	Species	Standard Curve Range	Sensitivity	Sample Volume	Cat. No.	Bulk Packaging Cat. No.*
Adiponectin	Human	1.56–200 ng/mL	0.2 ng/mL	10 $\mu$ L	EZHADP-61K	EZHADP-61BK
Adiponectin (High Molecular Weight)	Human	1.5–200 ng/mL	0.5 ng/mL	10 $\mu$ L	EZHMWAN-65K	
Adiponectin	Mouse	1–50 ng/mL	0.2 ng/mL	10 $\mu$ L	EZMADP-60K	EZMADP-60BK
Amylin (active)	Human	1–100 pM	0.7 pM	50 $\mu$ L	EZHA-52K	
C-Peptide	Human	0.2–20 ng/mL	0.05 ng/mL	10 $\mu$ L	EZHCP-20K	EZHCP-20BK
C-Peptide	Canine	0.2–10 ng/mL	0.24 ng/mL	25 $\mu$ L	EZCCP-47K	
C-Peptide 2	Mouse, Rat	25–1,600 pM	15.0 pM	20 $\mu$ L	EZRMCP2-21K	
FGF-21	Human	31.25–2,000 pg/mL	10.0 pg/mL	50 $\mu$ L	EZHFGF21-19K	
FGF-21	Mouse, Rat	49.4–12,000 pg/mL	10.0 pg/mL	10 $\mu$ L	EZRMFGF21-26K	
FGF-23	Human	9.9–2,400 pg/mL	3.5 pg/mL	50 $\mu$ L	EZHFGF23-32K	EZHFGF23-32BK
Ghrelin (active)	Human	25–2,000 pg/mL	15.0 pg/mL	20 $\mu$ L	EZGRA-88K	EZGRA-88BK
Ghrelin (active)	Mouse, Rat	25–2,000 pg/mL	8.0 pg/mL	20 $\mu$ L	EZRGRA-90K	
Ghrelin (total)	Human	100–5,000 pg/mL	50.0 pg/mL	20 $\mu$ L	EZGRT-89K	EZGRT-89BK
Ghrelin (total)	Mouse, Rat	0.1–10 ng/mL	0.04 ng/mL	20 $\mu$ L	EZRGR-91K	
GIP (total)	Human	8.2–2,000 pg/mL	4.2 pg/mL	20 $\mu$ L	EZHGIP-54K	EZHGIP-54BK
GIP (total)	Mouse, Rat	8.2–2,000 pg/mL	4.2 pg/mL	10 $\mu$ L	EZRMGIP-55K	EZRMGIP-55BK
GLP-1 (active)	Multi-Species	2–100 pM	1.0 pM	100 $\mu$ L	EGLP-35K	EGLP-35BK
GLP-1 High Sensitivity (active) $\Delta$ ••	Multi-Species	See data sheet	0.14 pM	50 $\mu$ L	EZGLPHS-35K	EZGLPHS-35BK
GLP-1 (total)	Multi-Species	4.1–1,000 pM	1.0 pM	20–50 $\mu$ L	EZGLP1T-36K	EZGLP1T-36BK
GLP-2	Multi-Species	1–64 ng/mL	0.3 ng/mL	50 $\mu$ L	EZGLP2-37K	

Metabolic/Endocrine/ ELISAs	Species	Standard Curve Range	Sensitivity	Sample Volume	Cat. No.	Bulk Packaging Cat. No.*
Glucagon $\Delta$	Human, Mouse, Rat	0.02–2 ng/mL	0.003 ng/mL	150–300 $\mu$ L	EZGLU-30K	EZGLU-30BK
Growth Hormone (GH)	Mouse, Rat	0.7–50 ng/mL	0.07 ng/mL	10 $\mu$ L	EZRMGH-45K	EZRMGH-45BK
Insulin	Human	2–200 $\mu$ U/mL	1.0 $\mu$ U/mL	20 $\mu$ L	EZHI-14K	EZHI-14BK
Insulin	Mouse, Rat	0.2–10 ng/mL	0.1 ng/mL	10 $\mu$ L	EZRMI-13K	EZRMI-13BK
Leptin	Canine	0.78–50 ng/mL	0.21 ng/mL	20 $\mu$ L	EZCL-31K	
Leptin	Mouse	0.2–30 ng/mL	0.05 ng/mL	10 $\mu$ L	EZML-82K	EZML-82BK
Leptin	Rat	0.2–30 ng/mL	0.08 ng/mL	10 $\mu$ L	EZRL-83K	EZRL-83BK
Leptin “Dual Range”	Human	0.5–100 ng/mL	0.2 ng/mL	25 $\mu$ L	EZHL-80SK	EZHL-80BK
Procollagen Type IIA N-Propeptide (PIIANP)	Human	lot dependent	30.0 ng/mL	5 $\mu$ L	EZPIIANP-53K	
Proinsulin (total)	Human	2–200 pM	0.5 pM	20 $\mu$ L	EZHPI-15K	EZHPI-15BK
PYY (total)	Human	10–2,000 pg/mL	6.5 pg/mL	20 $\mu$ L	EZHPPYT66K	
Resistin	Human	0.16–5 ng/mL	0.02 ng/mL	20 $\mu$ L	EZHR-95K	EZHR-95BK
SAA-3	Mouse	0.078–5 $\mu$ g/mL	0.078 $\mu$ g/mL	10 $\mu$ L	EZMSAA3-12K	

Neuroscience ELISAs	Species	Standard Curve Range	Sensitivity	Sample Volume	Cat. No.
Amyloid beta 1-40	Human	16–500 pg/mL	4 pg/mL	50 $\mu$ L	EZHS40
Amyloid beta 1-42	Human	16–500 pg/mL	5 pg/mL	50 $\mu$ L	EZHS42
Amyloid beta, Set	Human	Contains 1 each of EZHS40 and EZHS42			EZHS-SET
Amyloid beta (Brain) 1-40	Human	16–500 pg/mL	4 pg/mL	50 $\mu$ L	EZBRAIN40
Amyloid beta (Brain) 1-42	Human	16–500 pg/mL	5 pg/mL	50 $\mu$ L	EZBRAIN42
Amyloid beta (Brain), Set	Human	Contains 1 each of EZBRAIN40 and EZBRAIN42			EZBRAIN-SET
BDNF (Brain-Derived Neurotrophic Factor)	Human, Rat	7.8–500 pg/mL	7.8 pg/mL	50 $\mu$ L	CYT306
NPY (Neuropeptide Y)	Human	5–1,000 pg/mL	2 pg/mL	50 $\mu$ L	EZHNPY-25K
NPY (Neuropeptide Y)	Mouse, Rat	0.01–2 ng/mL	0.004 ng/ mL	20 $\mu$ L	EZRMNPY-27K
PEDF (Pigment Epithelium-Derived Factor)	Human	0.9–62.5 ng/mL	0.9 ng/mL	50 $\mu$ L	CYT420
Phosphorylated Neurofilament, (pNF-H) Sandwich	Multi- Species	0.0293–15 ng/mL	0.0585 ng/ mL	1–10 $\mu$ L	NS170
S100B	Human	2.7–2,000 pg/mL	1.3 pg/mL	50 $\mu$ L	EZHS100B-33K

\* Bulk packaging available on select kits — more environmentally friendly and saves space (10 kit equivalent)

•• Preferred assay for measuring GLP-1 (active)

$\Delta$  Chemiluminescent assay

## Sigma-Aldrich® Brand ELISAs

We offer a portfolio of >1,300 ELISAs, covering a diverse range of species, research areas, and sample types. Find your ELISA at [SigmaAldrich.com/elisa](https://SigmaAldrich.com/elisa)



# Ancillary Equipment to Optimize Your Assays



Instruments	BioTek® 405™ TSUV Plate Washer for SMC®/MILLIPLEX® Technology <b>NEW</b>	BioTek® 405™ TS Magnetic 96-Well Washer
Cat. No.	95-0004-06	40-092AB
Supported Technology	SMC® immunoassays MILLIPLEX® immunoassays	MILLIPLEX® immunoassays
Instrument Control	Touchscreen and computer software	Touchscreen and computer software
Features	<ul style="list-style-type: none"> <li>• Custom magnetic plate specific for use with SMC® technology</li> <li>• Ultrasonic Advantage™ program and 4 buffer switching</li> <li>• Optimized cell wash including Shaking &amp; Soaking</li> </ul>	<ul style="list-style-type: none"> <li>• Supports 96-well magnetic bead washing</li> <li>• Ultrasonic Advantage™ program for maintenance</li> <li>• Quick menu for priming and washing</li> </ul>
Wash Protocols	Pre-programmed with SMC® and MILLIPLEX® assay wash protocols	Predefined sample methods for easy operation
Plate Format	96-well for SMC® assays 96- and 384-well for MILLIPLEX® assays	96-well plates
Washer/Dispenser Options	Vacuum filtration, biomagnetic separation	Biomagnetic separation
Volume Range	50 – 3,000 µL/well	25 – 3,000 µL/well, in 1 µL increments
Residual Volume	≤ 2 µL per well	≤ 2 µL per well
Wash or Read Speed	300 µL/well, 3 cycles; ≤ 30 s	300 µL/well, 3 cycles; ≤ 30 s
Wash Cycles	1 to 250	1 to 250
Shaking	Programmable up to 60 min: slow, medium, fast, or variable	Programmable up to 60 min: slow, medium, fast, or variable
Automation Capability	BioSpa, BioStack, BenchCel, 3rd Party	BioTek® BioStack microplate stacker and 3rd Party
Footprint	14" W x 17" D x 10" H (35.6 x 43.2 x 25.4 cm)	14" W x 17" D x 10" H (35.6 x 43.2 x 25.4 cm)
Weight	With internal buffer switching: 36 lb (16.5 kg)	30 lb (13.5 kg)

## Related Products

Description	Cat. No.
BioTek® 50™ TS Microplate Washer	40-301
BioTek® 800™ TS Absorbance Reader with Gen5™ Software	40-006
BioTek® MultiFlo™ FX Multimode Dispenser	40-999
SMC® Plate Washer Evaluation Kit	03-0165-00
Flat Magnet, for 96-Well Plates, for use with MILLIPLEX® Assays (and for use with Cat. No. 95-0004-06)	7103016
Flat Magnet, for 384-Well Plates, for use with MILLIPLEX® Assays (and for use with Cat. No. 95-0004-06)	7103017
Handheld Magnetic Bead Washer Separator Block for 96-Well Flat Bottom or Conical Well Plates	40-285
BioTek® 800™ TS Product Qualification Package (to be sold with Cat. No. 40-006)	1560516
Absorbance Test Plate (to be sold with Cat. No. 40-006)	7260522
Vacuum Filter 96-Well (to be sold with Cat. No. 40-092AB)	1170008

### Enhance Your Workflows

Explore BioTek® washers for our platforms at [SigmaAldrich.com/smc-washer](https://SigmaAldrich.com/smc-washer) and [SigmaAldrich.com/milliplex-washer](https://SigmaAldrich.com/milliplex-washer)



# Belysa<sup>®</sup> Immunoassay Curve Fitting Software

(Cat. No. 40-122)

Our proprietary software package for curve fitting, examination, and comparison of data acquired from a variety of immunoassay platforms. Belysa<sup>®</sup> software has been designed to provide an easy-to-use tool to optimize curve fit and confirm the integrity of data within a plate or across plates from multiple runs.

## Key Features and Benefits

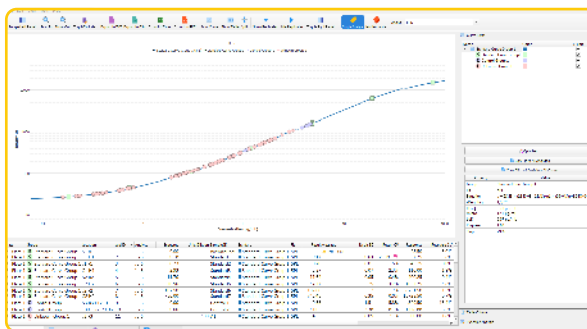
- User-friendly interface
- Automatic and manual curve fitting (4pl, 5pl, linear, competitive, cubic spline)
- Curve comparison tools
- Rules-based data flagging
- Suitable for use with RUO Luminex<sup>®</sup> instruments, FemtoQuest<sup>™</sup> platform, and ELISA .csv acquisition files
- Windows 10 and macOS (beta) compatible

### Data displayed after selecting curve fit model:

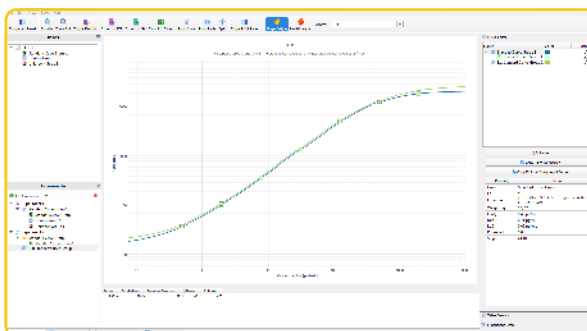
- Sample concentration
- Standard recovery
- Equation of line
- Limit of Detection (LOD)
- Lower Limit of Quantitation (LLOQ)
- Minimum Detectable Dose (MD)

### Other features:

- Data is exportable to: Excel, .csv, .txt, and .pdf
- Data autoflagging based on bead count, %CV, or BLOQ
- Curve comparison tool to evaluate parallelism and relative potency of standards



**Example 1.** Simply drag and drop the .csv output file into the Belysa<sup>®</sup> browser for instant data review.



**Example 2.** Comparison of two standard curves in Belysa<sup>®</sup> software from two lots of the same MILLIPLEX<sup>®</sup> assay run 1 year apart.

## Ready To Start Comparing Curves?

Get more details about Belysa<sup>®</sup> Software at: [SigmaAldrich.com/belysa](https://SigmaAldrich.com/belysa)



# CADI: Custom Assay Development & Innovation

Accelerate your research with custom SMC®, MILLIPLEX®, and ELISA assays designed for your specific biomarker needs.

We understand you don't always have the time, resources, or expertise to develop your own assay for your protein of interest. Rely on our vast development expertise and our ability to produce high-quality, reproducible immunoassays to help you accelerate your program from discovery research into clinical trials with a custom-designed solution.



**Get started today!**

View a complete listing of services at [SigmaAldrich.com/customassay](https://SigmaAldrich.com/customassay)



## Fit-For-Purpose Custom Assay Project Workflow

Develop a new SMC®, MILLIPLEX®, or ELISA assay which is fit for your purpose. We follow a milestone-based approach to generate an assay that quantifies your exact protein or proteins of interest. You will receive updates and data reviews during each milestone, offering you peace of mind that your project is on schedule and meeting specifications.



## Example Custom Assay Offerings

Cat. No.	Description	Description
SPRCUS1014	Custom Human 384-Well Circulating Cancer Biomarker Panel 3 8-Plex	H (S/P, Sup, Lys)
SPRCUS1016	Custom Human 384-Well Angiogenesis Panel 2 20-Plex	H (S/P, Sup, Lys)
SPRCUS1042	Custom Human 384-Well Immuno-Oncology Checkpoint Protein Panel 17-Plex	H (S/P, Sup)

# Beyond the Assay Development Workflow

In addition to our assay development services, we can support your other custom assay needs.

## Our additional capabilities include:

### Switching Formats

- MILLIPLEX® Assays: 96-well to 384-well
- SMC® Assays: bead-based to plate-based
- Converting MILLIPLEX® assays to SMC® assay platform

### Sample Testing

- Prototype sample testing
- Custom kit sample testing (SMC® and MILLIPLEX® assays)
- Off-the-shelf immunoassay kit testing (SMC® and MILLIPLEX® assays)

### Biotherapeutic Assay Development

- Pharmacokinetics
- Pharmacodynamics
- Immunogenicity

### SMCxPlore™ Proof of Concept Sample Testing:

Use our SMCxPlore™ proof of concept sample testing service to “explore” SMC® technology with your analyte of interest or critical samples. Test up to 30 of your critical samples using one of our highly verified SMC® immunoassays.

### Questions About CADI?

Explore our FAQs at [SigmaAldrich.com/cadi-faqs](https://SigmaAldrich.com/cadi-faqs)



## Find Out What Makes Our Immunoassays Stand Out

"MILLIPLEX® multiplex assays are high quality, reliable kits to detect low concentration markers such as cytokines, for use in limited volume samples."

"We value the reproducibility of MILLIPLEX® kits and their low plate-to-plate variation. The ease of panel configuration and ordering, as well as easy to follow protocols, save time both before and during analysis."

— **Danielle Stephens**, Forsyth Institute Multiplex Core, Cambridge, MA

"MILLIPLEX® assays save valuable time and sample by allowing us to measure several targets at once. We also only have to thaw plasma samples once, lessening the risk of sample degradation."

"We trusted the proven specificity and sensitivity of MILLIPLEX® assays, so we knew we would not be wasting precious samples."

— **Mary Young**, University of Virginia School of Medicine, Division of Infectious Diseases, Charlottesville, VA

"This panel has allowed me to quantify more cytokines with less sample and more quickly than anything else."

— **Dr. Kyle McLean**, Department of Animal Science, University of Tennessee Institute of Agriculture, Knoxville, TN

**Get Inspired by the Latest Immunoassay Research Posters at**  
[SigmaAldrich.com/immunoassays-posters](https://SigmaAldrich.com/immunoassays-posters)





# Beyond Biomarkers

Keep your focus on the next stage

## Rigorous Assay Development

### Specificity ●●

- Antibody specificity is tested to ensure negligible cross-reactivity in the tested sample types
- Assay specificity is ensured by confirming consistent performance in singleplex and multiplex formats

### Method Comparisons ●●

- We test our kits against in-house kits and kits from other vendors when available, ensuring the highest performing kits

### Selectivity ●●

- Assay buffers and bead diluents are optimized to enhance antibody binding to only those analytes of interest in samples

### Detection and Sensitivity ●

- The assay range and minimum detectible concentrations (minDCs or LLOQ) for each analyte is published in our protocols, and is based on actual samples

### Performance in a Sample Matrix ●

- Assays are verified for the sample type noted in the protocol; for serum/plasma sample kits, we provide an optimized serum matrix to mimic the environment of the sample, normalizing assay performance

## Reproducible Results You Can Trust

### Stability ●●

- All kits are rigorously tested for shipping stability to determine impact on each analyte
- Sample stability is examined at a range of temperatures, and by freeze/thaw

### Precision ●●

- Precision of control standards are typically within 15% CV for intra-assay and 20% CV for inter-assay

### Accuracy ●

- Spike recovery in sample is performed for each analyte at three concentrations; accuracy is normally within  $\pm 30\%$

### Dilution Linearity/Parallelism ●

- Diluted sample results must be directly proportional to the concentration of analyte in the sample, typically within  $\pm 30\%$

### Lot-to-Lot Consistency ●

- A “gold standard” calibrator is defined during assay development and used as a reference for all future production lots

We'll help you choose the right platform and assays to meet your needs today, and we'll partner with you to meet those needs in the future — without compromising quality.

- Screening Assays
- Qualified and Verified Assays

# Millipore®

Preparation, Separation,  
Filtration & Monitoring Products

Merck KGaA  
Frankfurter Strasse 250  
64293 Darmstadt, Germany

[SigmaAldrich.com](https://www.SigmaAldrich.com)



Scan to download  
a digital copy.



**Keep up to date!**

Don't miss out on updates by  
signing up for our newsletter:  
[SigmaAldrich.com/analyteupdate](https://www.SigmaAldrich.com/analyteupdate)

## To place an order or receive technical assistance

Order/Customer Service: [SigmaAldrich.com/order](https://www.SigmaAldrich.com/order)

Technical Service: [SigmaAldrich.com/techservice](https://www.SigmaAldrich.com/techservice)

Safety-related Information: [SigmaAldrich.com/safetycenter](https://www.SigmaAldrich.com/safetycenter)

We have built a unique collection of life science brands with  
unrivalled experience in supporting your scientific advancements.

**Millipore® Sigma-Aldrich® Supelco® Milli-Q® SAFC® BioReliance®**

© 2025 Merck KGaA, Darmstadt, Germany and/or its affiliates. All Rights Reserved. Merck, the vibrant M, Millipore, Sigma-Aldrich, Supelco, Milli-Q, SAFC, BioReliance, AAW, Belysa, Conferma, FemtoQuest, MAPmate, and MILLIPLEX are trademarks of Merck KGaA, Darmstadt, Germany or its affiliates. All other trademarks are the property of their respective owners. Detailed information on trademarks is available via publicly accessible resources.

MK\_PG7752EN Ver. 8.0

64113  
11/2025

Distributed by Abacus dx

1800 ABACUS (AUS) 0800 222 170 (NZ) | [info@abacusdx.com](mailto:info@abacusdx.com) | [www.abacusdx.com](https://www.abacusdx.com)

abacus dx