

Contact info



Abacus dx
1800 Abacus (AUS) 0800 222 170 (NZ)
info@abacusdx.com / www.abacusdx.com

www.aidian.eu
www.quikread.com
www.tackleamr.com

QuikRead go CRP	Cat. no.
QuikRead go CRP, 50 tests including capillaries and plungers	135171
QuikRead go CRP Control	153764
QuikRead go CRP Control High	153763

QuikRead go CRP+Hb	Cat. no.
QuikRead go CRP+Hb, 50 tests including capillaries and plungers	140068
QuikRead go CRP Control	153764
QuikRead go CRP Control High	153763
QuikRead go Hb Control	141154

QuikRead go Strep A	Cat. no.
QuikRead go Strep A, 50 tests including controls	135883

QuikRead go iFOBT	Cat. no.
QuikRead go iFOBT, 50 tests	151051
QuikRead iFOB Sampling set, 50 devices	151052
QuikRead go iFOBT Control Quantitative	152390
QuikRead FOB Positive Control	06027

QuikRead go Instrument	Cat. no.
QuikRead go Instrument (FI, SE, NO, DK, CZ, SK, PL, HU)	135867
QuikRead go Instrument (other languages)	133893

QuikRead go HbA1c	Cat. no.
QuikRead go HbA1c, 25 tests including QuikRead go Sample Collector 1µl	151058
QuikRead go HbA1c Control Set	154520

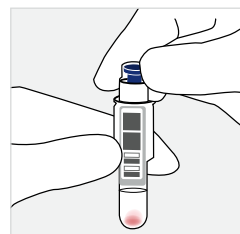
QuikRead go wrCRP	Cat. no.
QuikRead go wrCRP, 50 tests including capillaries and plungers	146521
QuikRead go CRP Control Low	153765
QuikRead go CRP Control	153764
QuikRead go CRP Control High	153763

QuikRead go wrCRP+Hb	Cat. no.
QuikRead go wrCRP+Hb, 50 tests including capillaries and plungers	146255
QuikRead go CRP Control Low	153765
QuikRead go CRP Control	153764
QuikRead go CRP Control High	153763
QuikRead go Hb 10 µl Control	153656

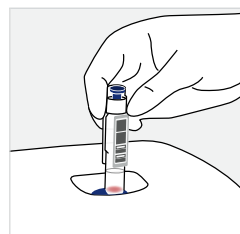
QuikRead go easy CRP	Cat. no.
QuikRead go easy CRP, 50 tests with QuikRead go Sample Collector 10µl	153287
QuikRead go CRP Control Low	153765
QuikRead go CRP Control	153764
QuikRead go CRP Control High	153763

Information about QuikRead go accessories: www.aidian.eu

It's so easy to use!



Sample



Measurement



Result

References

1. Crocker J et al. Implementation of Point-of-Care Testing in an Ambulatory Practice of an Academic Medical Center. *Am J Clin Pathol* 2014; 142:640-646.
2. Data on file.
3. Minnaard M et al. Analytical performance, agreement and user-friendliness of five creative protein point-of-care tests. *Scand J Clin Lab Invest* 2013; 73:627-634.
4. Hernández-Bou S et al. Evaluation of the bedside QuikRead go® CRP test in the management of febrile infants at the emergency department. *Eur J Clin Microbiol Infect Dis* 2017; 36:1205-1211.

Results you can trust.

QuikRead go® for point of care

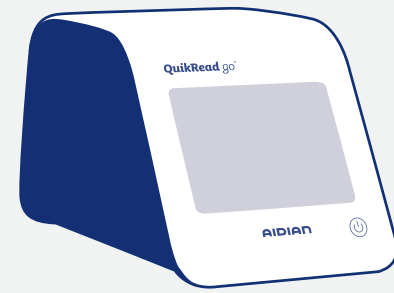


AIDIAN

www.aidian.eu

AIDIAN

Save time and resources with a flexible point of care system.¹



QuikRead go[®]

Available analytes

HbA1c / CRP / CRP+Hb / Strep A / FOB



Point of care testing (POCT) can significantly improve clinical operations with cost reductions through **improved practice efficiency**. The economic benefits of POCT may be realized in both fee-for-service and global payment environments."¹

Get support for diagnosis and treatment decision with laboratory quality results just within minutes. Small and fully portable instrument enables testing in various healthcare settings.²⁻⁴

Have peace of mind with the high performing, robust, and easy to use test system. Exceptional connectivity features and automatic testing procedure ensures you better POC management and traceability.²⁻⁴

Immediate



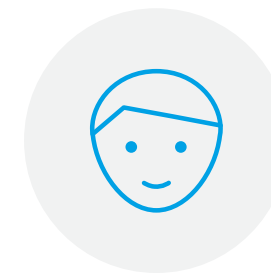
- Results in minutes
- Minimum hands-on time required
- Results you can trust during patient consultation
- Supports you on the spot in making the correct diagnosis and treatment decisions²⁻⁴

Reliable



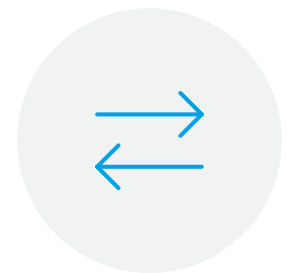
- Instrument read results ensure objective result interpretation
- Reliable results comparable to laboratory methods²⁻⁴
- Robust instrument
- Close to 50 000 QuikRead and QuikRead go instrument sold worldwide

Carefree



- No need for regular maintenance
- Plug and play
- Ready to use reagents
- Fully automatic testing procedure
- Interactive user interface available in 23 languages
- Battery use ensures full portability

Traceable



- Results with all testing details stored automatically to the instrument
- Patient ID and User ID for improved traceability
- Connectable to most hospital (HIS) and laboratory information (LIS) systems
- POCT1-A2 bidirectional connectivity with advanced features
- LIS01-A2 unidirectional connectivity