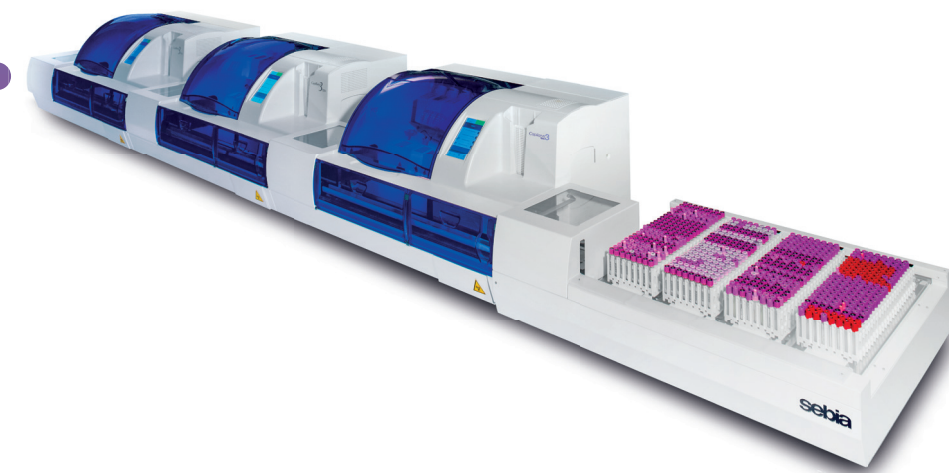


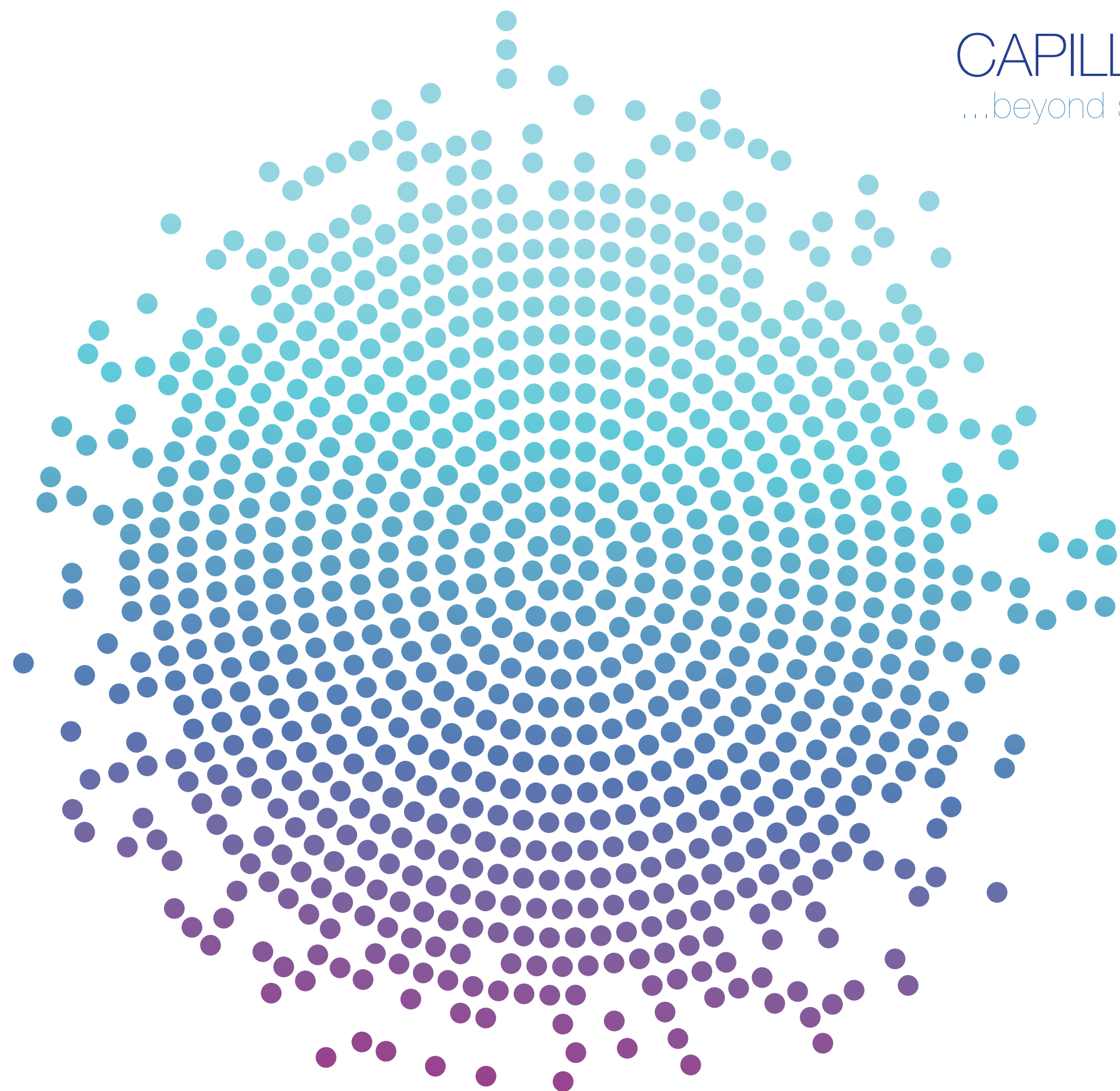


separation



Sebia reserves the right to change this information at any time without prior notice. C3-201609-B1-EN - ©09/2016 - sebia

CAPILLARYS **3**
...beyond separation



...beyond



sebia

Incomparable separation for a unique quality of result

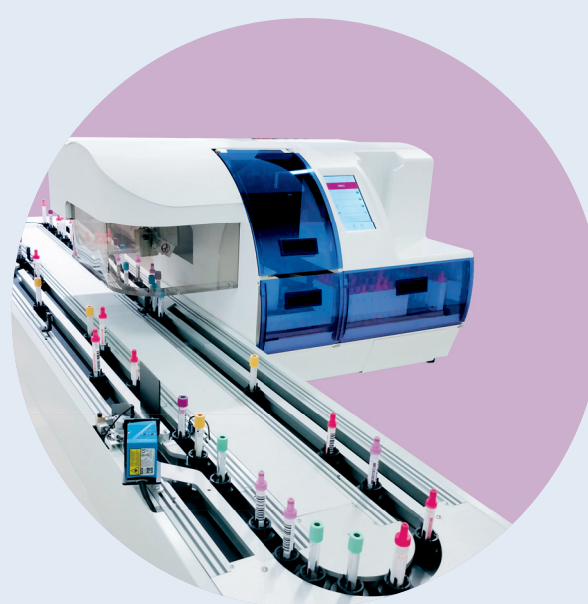
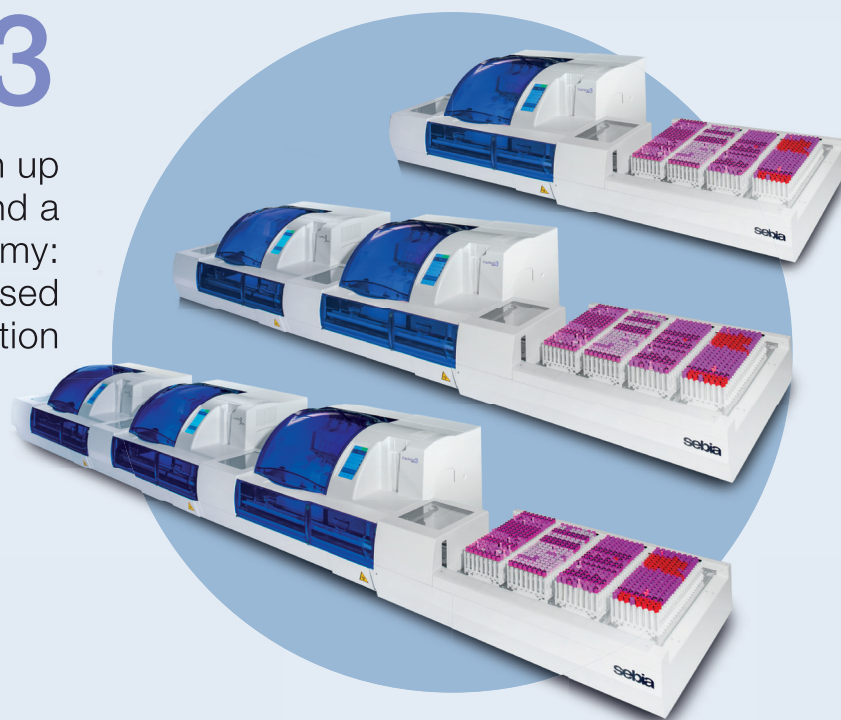


CAPILLARYS 3 OCTA/TERA

Multiparametric stand alone instruments with 8/12 capillaries in parallel. A proven analytical excellence meets high throughput

CAPILLARYS 3 TERA MC

Workcell configuration with up to 3 CAPILLARYS 3 TERAs and a tube loader. Unbeatable autonomy: 700 samples can be processed without technician intervention



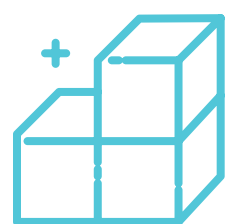
CAPILLARYS 3 TERA TLA

Track connectivity with point-in-space instrument. The analytical excellence is now fully automated

Your journey towards full lab automation with Sebia

Flexibility of solutions

Stand alone, workcell or Total Laboratory Automation, which one is the best for you today?



Service & Support

Do you have a question? Just call our Sebia Knowledge Center



Traceability and Security

Be assured that everything is under control, with full traceability for samples and reagents, capped tube management and mixing for whole blood



Optimized workflow and Productivity

High throughput autonomous instruments with less technician intervention – your patients benefit from faster generation of results



Quality of results

Have confidence when reporting your patients' results with the best-in-class separation assay



Result interpretation software

Powerful PHORESIS CORE software makes your patient management easy



Multiparametric instruments with large range of tests*:

- Hb A1c (venous blood)
- Hb A1c (capillary blood)
- Serum Protein Electrophoresis (SPE)
- Urine Protein Electrophoresis (UPE)
- Serum Immunotyping
- Urine Immunotyping
- CDT/CDT_{IFCC}
- Hemoglobin Electrophoresis (adult whole blood)
- Hemoglobin Electrophoresis (newborn on dried blood spot)**

* Check with your Sebia representative for test availability

** Under development