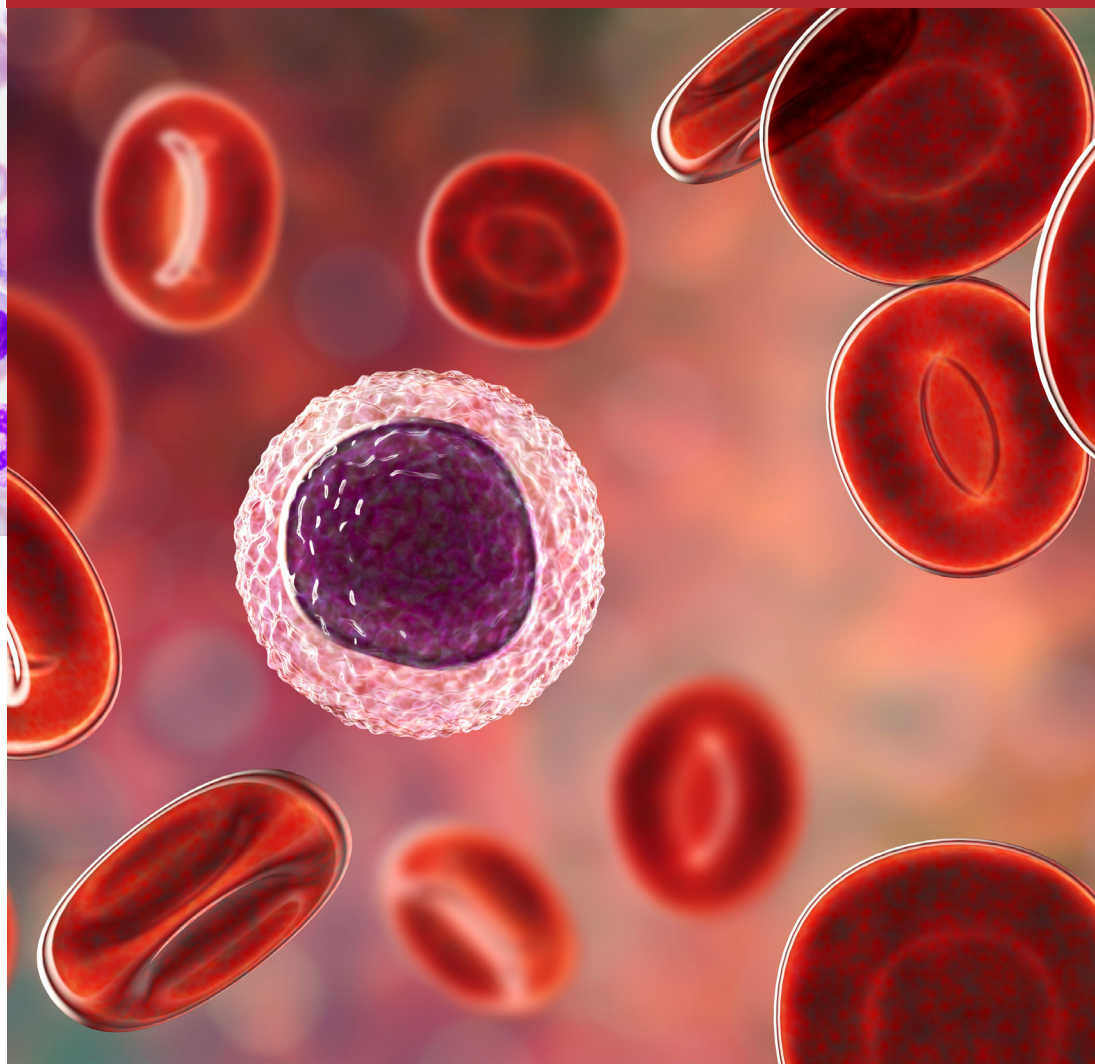
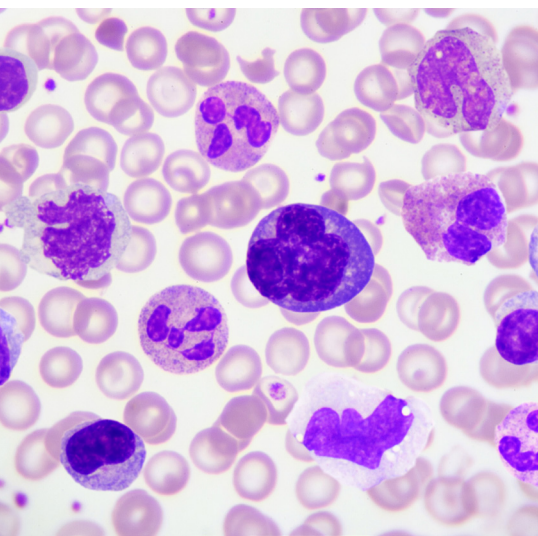




STRECK



Cellular Stabilization for Flow Cytometry



Cellular Stabilization for Flow Cytometry

Streck utilizes our proprietary cell-stabilization methodology to provide solutions for optimal storage and transport of patient sample for immunophenotyping by flow cytometry.

Superior Science

- + Utilization of proprietary methodology to preserve the patient sample.
 - Cyto-Chex® BCT – direct blood draw tube for immunophenotyping of white blood cells by flow cytometry.
 - Streck Cell Preservative™ – maintains cellular antigen expression, including cluster of differentiation (CD) markers of patient samples for analysis by flow cytometry.
- + Minimizes the adverse effects and degradation of the patient sample associated with time, storage, and shipping.
 - Maintains patient sample integrity for optimal analysis by flow cytometry.
- + Confidence in definitive results that are trusted by clinicians.

Ease of Use

- + Cyto-Chex BCT is FDA 510(k) cleared for consistent recovery of HIV-associated lymphocyte subsets for 14 days following collection.
 - Reduce the potential for patient redraws.
 - Available in 2mL and 5mL vials.
- + Streck Cell Preservative preserves peripheral and cord blood samples, tissue samples, bone marrow and fine needle aspirates for up to 7 days following collection.
 - Reduce the potential for patient redraws.
 - Available in 1mL and 10mL vials.
- + Potentially reduces the need for weekend and overtime preparation and analysis.
- + Technical Support team, consisting of Medical Laboratory Scientists, to assist with product questions.
- + Dedicated Sales and Customer Care team available at 800.228.6090.

Streck Flow Cytometry Stabilization



Cyto-Chex® BCT

Direct-draw blood collection tube for immunophenotyping by flow cytometry.

- + FDA 510(k) cleared for consistent recovery of HIV associated lymphocyte subsets for 14 days.
- + Minimizes adverse effects of time, storage and transport conditions on sample integrity.
- + Available in 5 mL and 2 mL draw.
- + Samples are stable at room temperature.

Streck Cell Preservative™

An easy-to-use liquid preservative that maintains cellular antigen expression, including CD markers of biological samples for analysis by flow cytometry.

- + Preserves peripheral and cord blood samples, surgical tissue samples, bone marrow and fine needle aspirates.
- + Eliminates the adverse effects of time, storage and transport conditions.
- + Available in 1 mL and 10 mL vials.
- + Samples are stable for up to 7 days.

SelectScience® 22 YEARS
The Fastest Way to Expert Opinion™ Advancing Scientific Communication

“Excellent product. Highly recommend product to both clinical and research labs.”

Rating: 5.0 ★★★★★

Application Area: Preservation of whole blood for extended immunophenotyping assays

“Consistent and highly reproducible results. Use of this product improves overall laboratory operations by reducing the potential loss of samples which may be subject to delays in transport.”

Review date: 17 Mar 2021 | **Cyto-Chex BCT**

Streck's flow cytometry stabilization products preserve samples longer and improve laboratory operations.

Ordering Information

Product	Configuration	Catalog Number
Cyto-Chex® BCT	6-tube pack (2.0 mL) glass	213559
	100-tube box (2.0 mL) glass	218980
	6-tube pack (5.0 mL) glass	213361
	25-tube box (5.0 mL) glass	213362
	100-tube box (5.0 mL) glass	213386
Streck Cell Preservative™	6 x 1.0 mL	213350
	50 x 1.0 mL	213355
	2 x 10.0 mL	213358

Domestic Sales

800.843.0912
domesticsales@streck.com

Customer Service

800.228.6090
custserv@streck.com

Technical Services

402.691.7510
800.843.0912
Fax: 402.691.7518
technicalservices@streck.com

