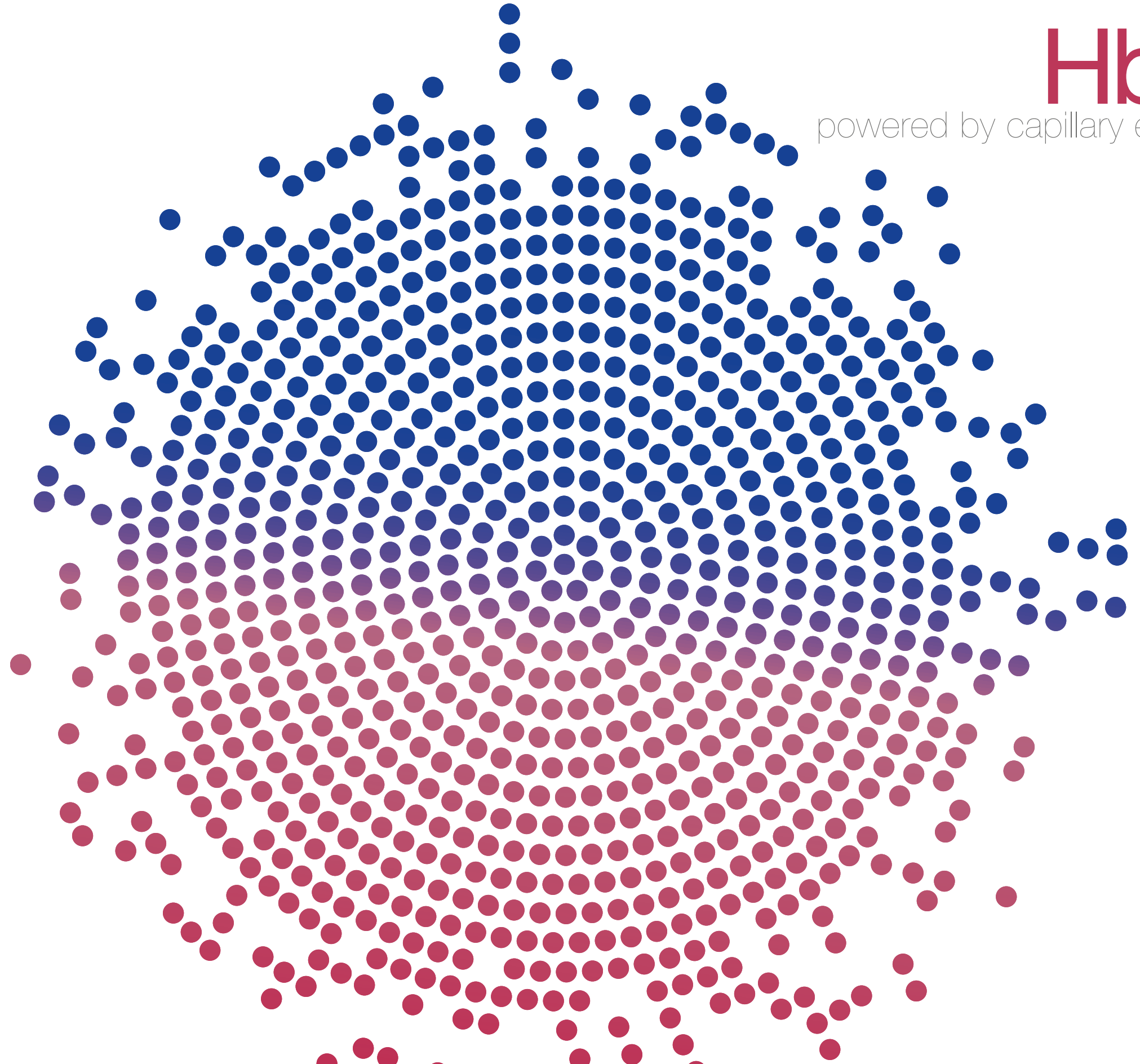


precise results

Sebia reserves the right to change this information at any time without prior notice. HBA1C-201910-B2-EN - ©10/2019 - sebia

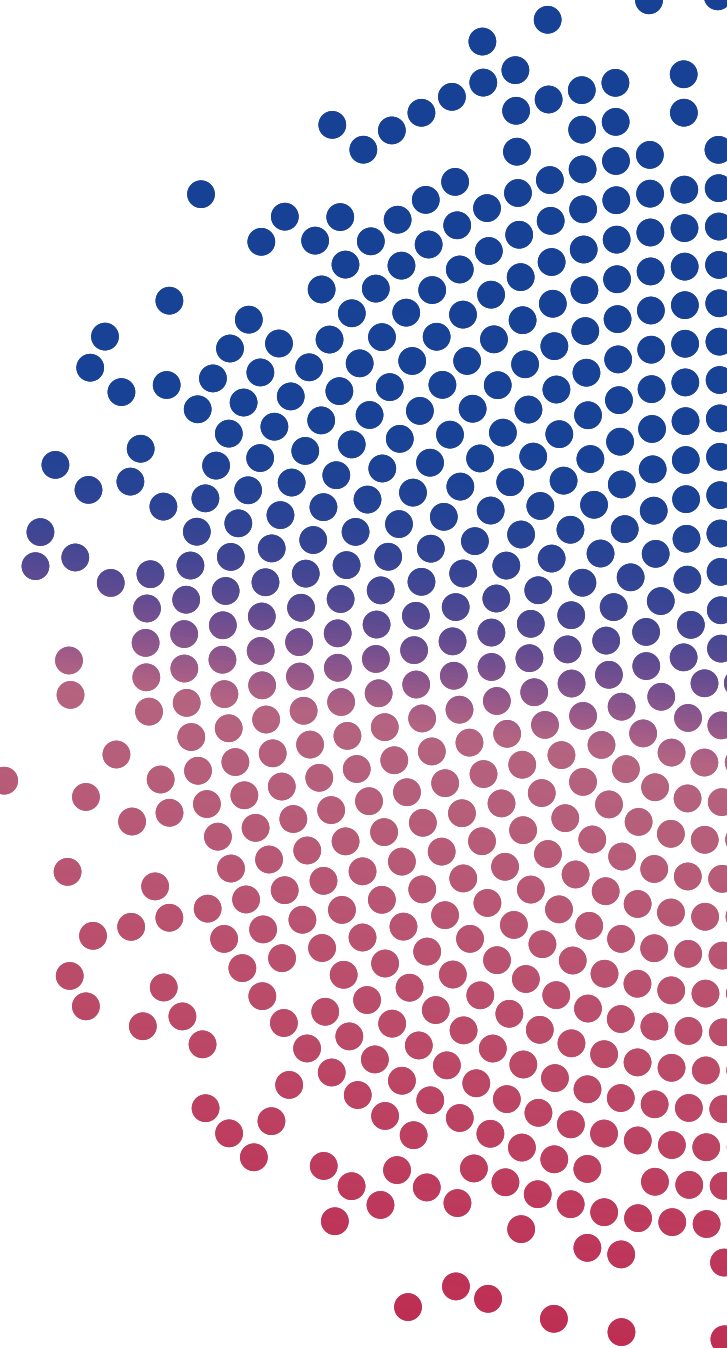
sebia
sebia
sebia
sebia
sebia
sebia
sebia
sebia
sebia
sebia



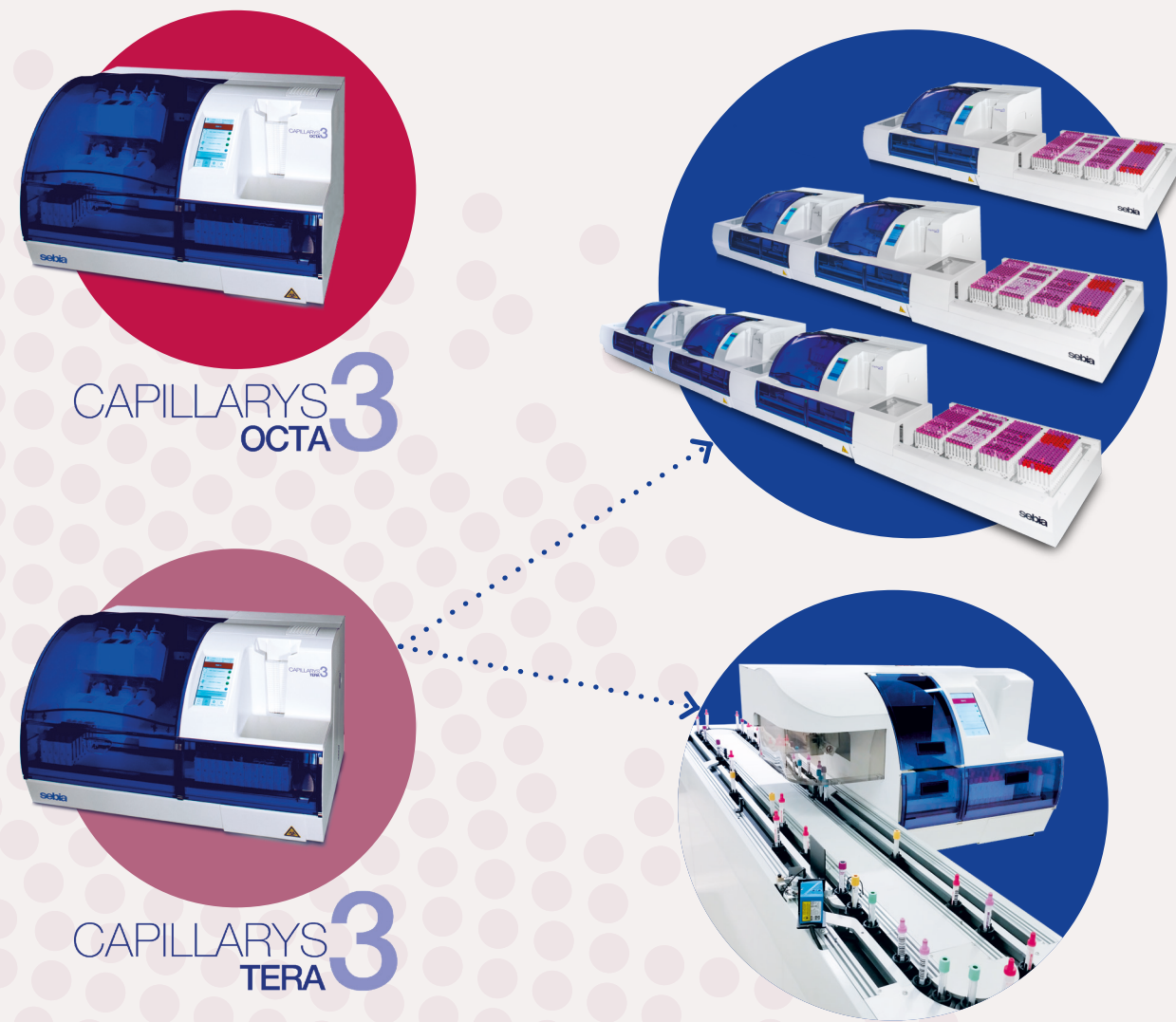
Hb A1c

powered by capillary electrophoresis

Clear-cut and



Hb A1c by capillary electrophoresis: clear-cut and precise results



Multiparametric instruments with large range of tests*:

- Hb A1c (venous blood)
- Hb A1c (capillary blood)
- Serum Protein Electrophoresis (SPE)
- Urine Protein Electrophoresis (UPE)
- Serum Immunotyping
- Urine Immunotyping
- CDT/CDT_{IFCC}
- Hemoglobin Electrophoresis (adult whole blood)
- Hemoglobin Electrophoresis (newborn on dried blood spot)**

* Check with your Sebia representative for test availability

** Under development

Ergonomics

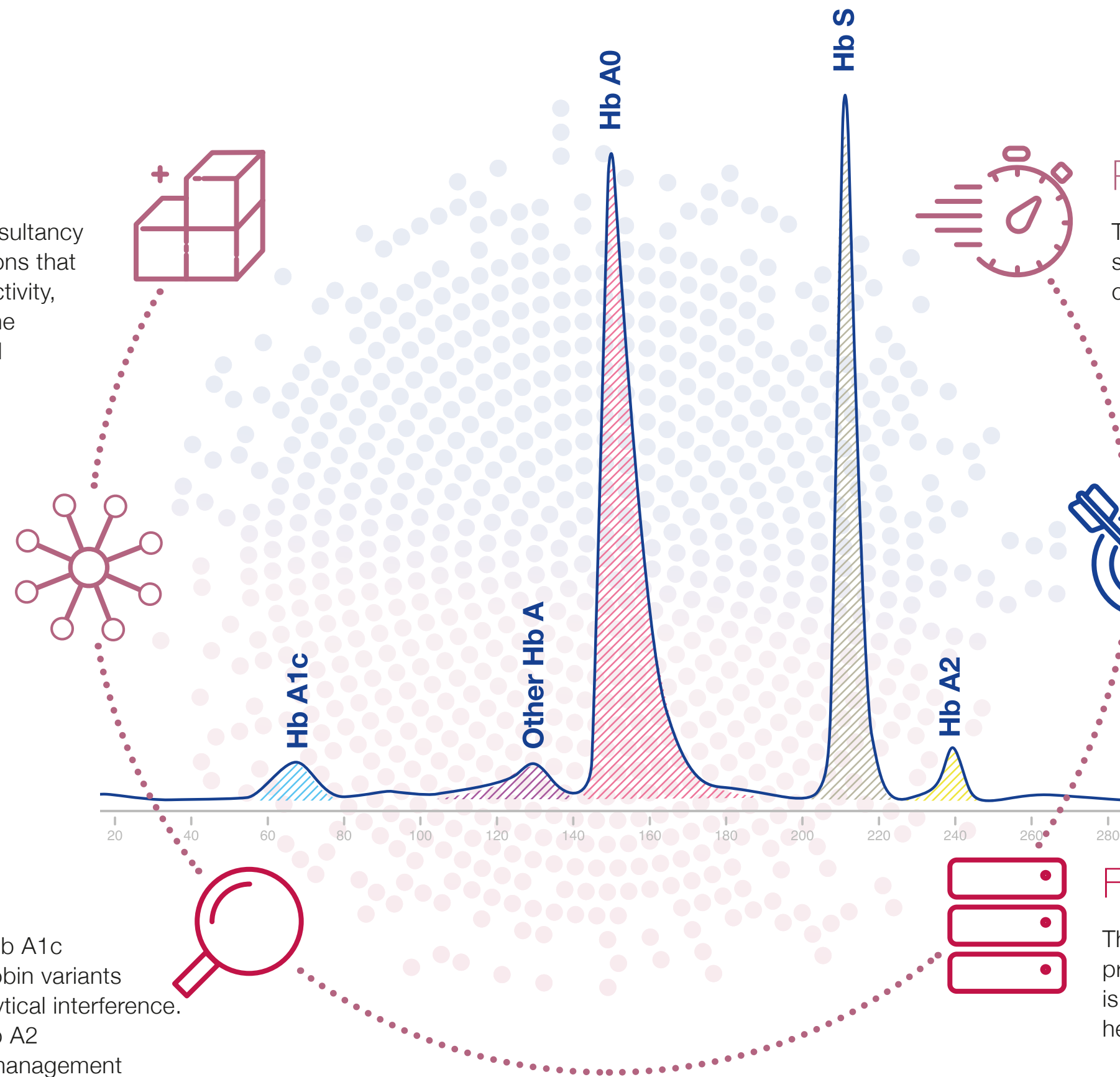
The laboratory optimization consultancy service provides effective solutions that fit your needs: increased productivity, TAT management, hands-on time improvement, consolidation and workflow streamlining

Flexibility

The HbA1c test can be added to a wide range of diagnostic tests on the same platform. This provides flexibility capable of meeting the needs of both small and large laboratories

High resolution

The clear separation between Hb A1c and the most common hemoglobin variants guarantees results without analytical interference. The precise measurement of Hb A2 contributes to a better patient management



Productivity

The simultaneous analysis of multiple samples supports productivity, which can be adapted to any workload

Accuracy

Scientific publications and EQC programs reflect the excellent performances of the Sebia method, IFCC and NGSP certified

Facilitated interpretation

Thanks to the clarity of the electrophoretic profiles, the time required for validation is reduced, even in the presence of hemoglobin variants or thalassemias

Flexible automation and consolidation

Laboratory optimization consultancy service

“Best in class” separative method

