

CutMATE

IMPROVE don't change your grossing procedures!



INNOVATIVE GROSSING FORCEPS FOR RAPID SECTIONING OF 2-3-4 MM TISSUE BLOCKS



MILESTONE

COMPASSIONATE
TECHNOLOGY FOR
SAME-DAY DIAGNOSIS

CutMATE Simple

The innovative forceps for that ALL important grossing and sampling of specimens

Stop hearing complaints that the tissue block was too thick and did not process!

Get CutMATE: the new forceps for simple, rapid and consistent sampling of specimens at pre-set thickness.

The CutMATE forceps were developed to overcome the variability of tissue block thickness that is heavily dependent on the type of tissue, its consistency and the grossing prowess of the operator.

The CutMATE forceps, laser-shaped from special AISI 304 stainless steel, allow to cut consistently blocks of uniform thickness either 2, 3 or 4 mm.

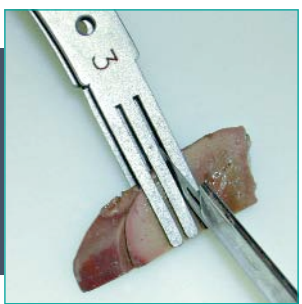
The unique "trident-like" design of the 35 mm long prongs, ergonomically angled at 30° (for both right and left handed operator) allows cutting of tissue size to fit the standard, all plastic universal cassettes.

The inside surface of the prongs is specially textured (grooved) to provide the extra grip needed for stabilizing and slicing those difficult, hard-to-hold tissues like breast.

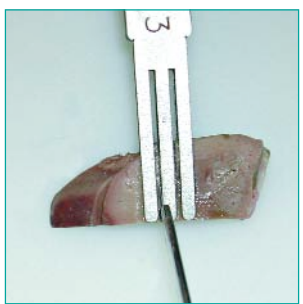


as...

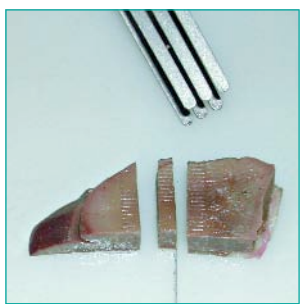
Hold specimen in forceps and make first cut.



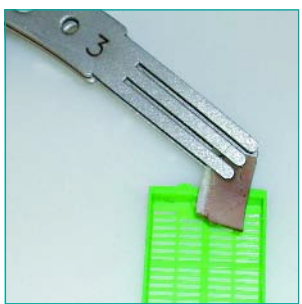
Cut other side of the central fork to obtain a pre-set thickness specimen.



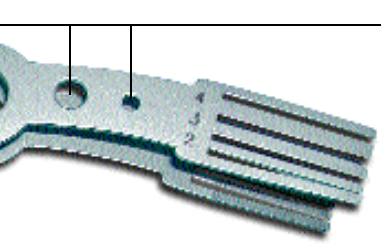
Separate specimen to be processed.



Place specimen in cassette.



Unique features of CutMATE forceps



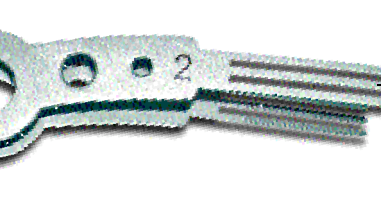
Pressure points to suit specimen consistency



Prongs are angled at 30° for an ergonomic fit



Internal grooved contact surface texture for improved grip of specimen



Special multiple 2 mm prongs for lymph node grossing

The CutMATE advantages

- Eliminates the guess work in cutting specific block thickness
- Allows standardization of block thickness, independent of operator ability
- Improves consistency of histoprocessing due to standardization of block thickness
- Improves confidence and productivity in grossing
- Allows taking serial wet tissue blocks in one simple step (e.g. lymph nodes)
- Suitable for block's preparation for microwave and conventional histoprocessors



Cutting lymph nodes at 2 mm thickness

CutMATE

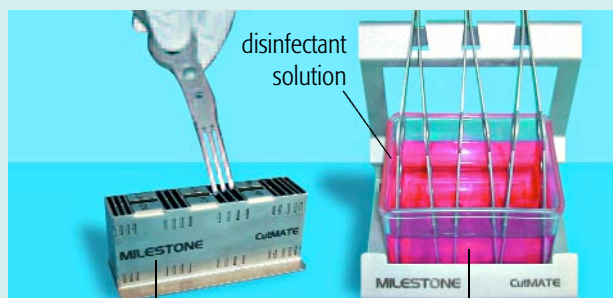
A range of forceps to assist the Pathologists, Pathologists Assistants, Registrars and Researchers in taking the guess-works out of getting the right size thickness block.

Accessories for user-friendly operation

Stainless steel holder for 3 CutMATE forceps












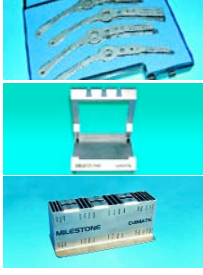

TPX container for keeping prongs submerged in sterilizing solution



CheckMATE calibration device to daily restore distance between prongs

The CutMATE forceps in operation

Ordering information

	P/N	ITEM		P/N	ITEM
	62362	Forcep for 2 mm tissue block		62372	TPX container (only)
	62361	Forcep for 3 mm tissue block		62365	Stainless steel forceps holder (only)
	62360	Forcep for 4 mm tissue block		62373	Stainless steel forceps holder complete with TPX container
	62359	Forcep for 2, 3, 4 mm tissue blocks		62374	Calibration Device
	62357	Box with set of four (4) forceps		62375	Starter kit includes: -P/N 62357 Box with set of four (4) forceps (q.ty 1) -P/N 62373 Stainless steel forceps holder complete with TPX container (q.ty 1) -P/N 62374 Calibration device (q.ty 1)
	62358	Set of four (4) forceps (no box)			



MILESTONE S.r.l.
Via Fatebenefratelli 1/5
24010 Sorisole (BG) Italy
Tel. +39-035-4128264
Fax +39-035-575498
e-mail: medical@milestonesrl.com
<http://www.milestonemedsrl.com>

MILESTONE MEDICAL
25 Controls Drive
Shelton, CT 06484 - USA
Tel: (203) 925-4240
Toll-free: (866) 995-5300
Fax: (203) 925-4241
e-mail: info@milestonemed.com
<http://www.milestonemed.com>

CUTMATE/REV.00/06



Distributed by Abacus ALS:
AUS 1800 222 287 | NZ 0800 222 170
info@abacus-als.com | www.abacus-als.com