



Quality in Control



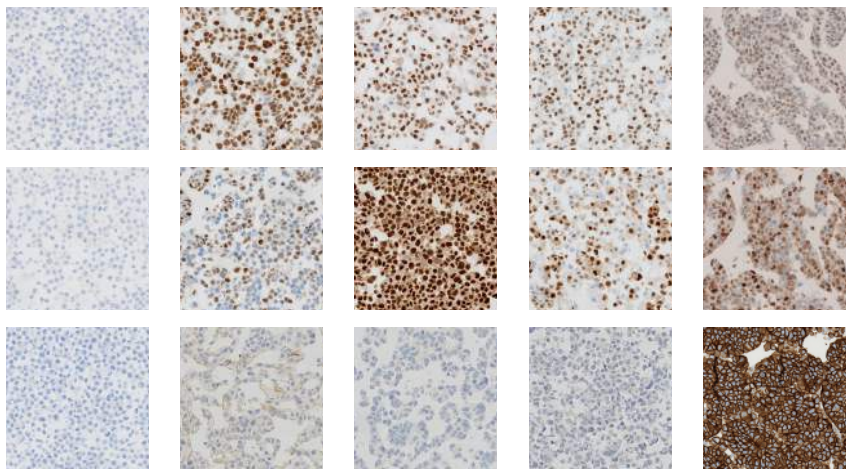
Cell line controls

for immunohistochemistry (IHC) and in situ hybridization (ISH)

Dynamic Range Products

Breast Analyte Control^{DR}

The multi-purpose Breast Dynamic Range Analyte Control contains five cell lines that demonstrate a dynamic range of expression for ER, PR and HER2. Ideal for use as a same slide control in IHC for laboratories that need a general use breast control.



ER

PR

HER2



Format

Slide (2)
Slide (5)
Block

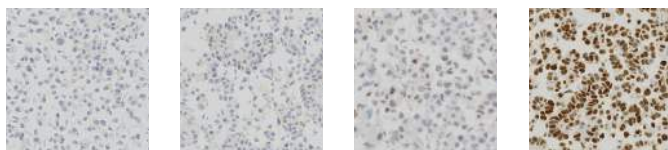
5 core

Code

HCL016
HCL017
HCL018

Estrogen Receptor Analyte Control^{DR}

ER Dynamic Range Analyte Control contains four cores, offering a full range of expression for ER: negative, low, medium, and high.



4 core

Format

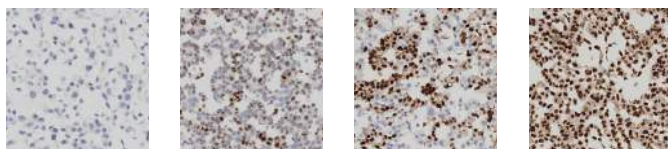
Slide (2)
Slide (5)
Block

Code

HCL029
HCL030
HCL031

Progesterone Receptor Analyte Control^{DR}

Progesterone Receptor Analyte Control^{DR} contains four cores, offering a range of expression for PR: negative, low/intermediate, intermediate/high, and high.



4 core

Format

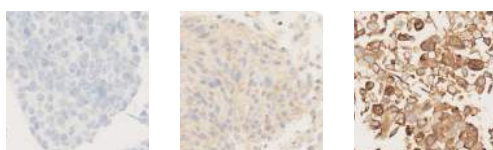
Slide (2)
Slide (5)
Block

Code

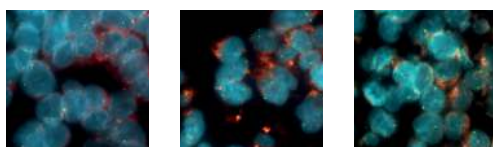
HCL032
HCL033
HCL034

ROS1 Analyte Control^{DR}

ROS1 Analyte Control^{DR} is the dynamic range version of our popular ROS control, containing an additional cell line with low expression of ROS.



IHC



FISH



3 core

Format

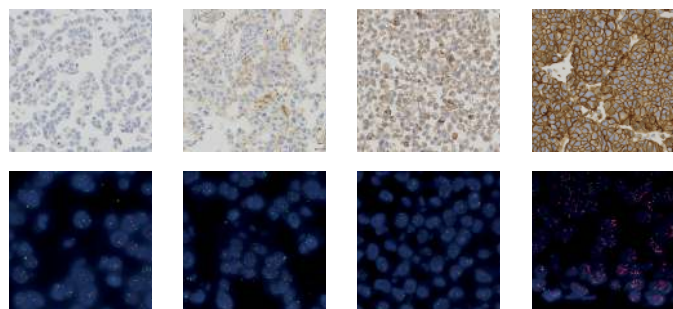
Slide (2)
Slide (5)
Block

Code

HCL035
HCL036
HCL037

HER2 Analyte Control^{DR}

This product contains a full dynamic range of HER2 expression. It contains a 2+ cell line which harbours a borderline expression of the HER2 gene. This is the best quality control for demonstrating appropriate sensitivity of your HER2 assay.



IHC



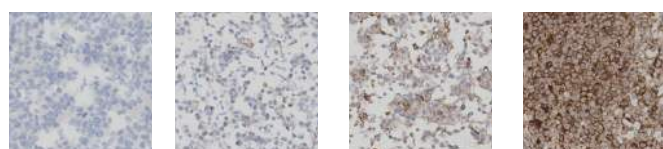
4 core

FISH

Format	Code
Slide (2)	HCL026
Slide (5)	HCL027
Block	HCL028

PD-L1 Analyte Control^{DR}

PD-L1 Dynamic Range Analyte Control consists of four different cell lines with PD-L1 expression levels of high, medium, low and negative. Ideal for use as a same slide control for PD-L1 to demonstrate the sensitivity of the assay.



IHC



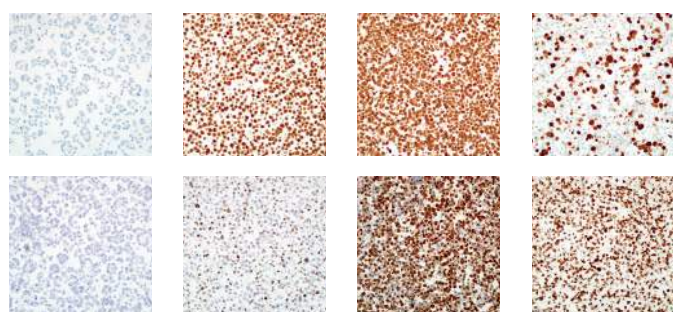
4 core

FISH

Format	Code
Slide (2)	HCL019
Slide (5)	HCL020
Block	HCL021

HPV/p16 Analyte Control^{DR}

The HPV/p16 Dynamic Range Analyte Control contains four cell lines that demonstrate a full dynamic range of expression for high risk human papillomavirus types 16 and 18: high, medium, low and negative. The same cell lines demonstrate high homogenous, high heterogenous and negative expression of p16. Ideal for use as a same slide control for HPV in situ hybridization and p16 IHC where maximum sensitivity is required.



P16 IHC



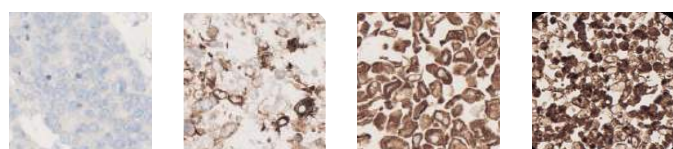
4 core

RNA scope
E6 / E7

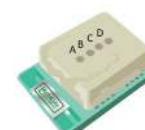
Format	Code
Slide (2)	HCL001
Slide (5)	HCL002
Block	HCL003

ALK Analyte Control^{DR}

ALK Analyte Control^{DR} (Four cores: negative, positive for WT ALK, positive for EML4-ALK and positive for NPM-ALK). ALK Analyte Control^{DR} is suitable for either ALK assay (lung or lymphoma), moreover it helps determine if an assay used is suitable for use in either setting. The WT ALK being crucial in assessment.



IHC



4 core

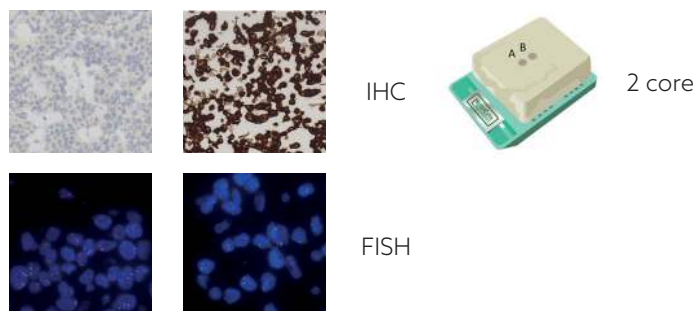
FISH

Format	Code
Slide (2)	HCL053
Slide (5)	HCL054
Block	HCL055

Standard Products

ALK-Lung (EML4-ALK) Analyte Control

ALK-Lung Analyte Control contains two cell lines that demonstrate positive and negative expression of EML4-ALK associated lung cancer. Ideal for use as a same slide control in IHC to demonstrate the reagents have been correctly applied to the slide.



Format	Code
Slide (2)	HCL007
Slide (5)	HCL008
Block	HCL009

ALK-Lymphoma (NPM-ALK) Analyte Control

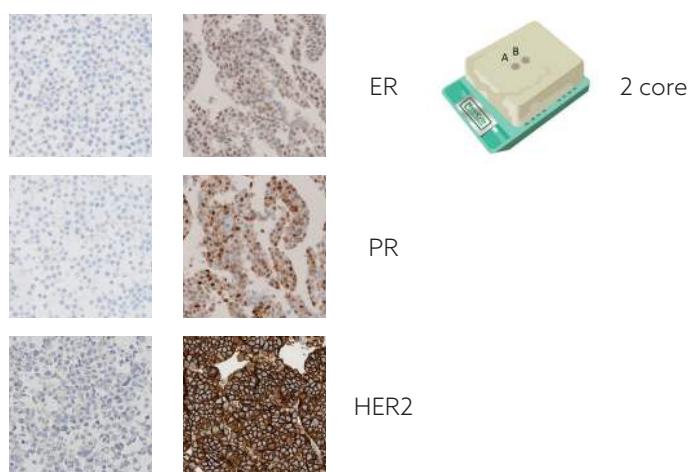
ALK-Lymphoma Analyte Control contains two cell lines that demonstrate positive and negative expression of NPM-ALK associated lymphoma. Ideal for use as a same slide control in IHC to demonstrate the reagents have been correctly applied to the slide.



Format	Code
Slide (2)	HCL010
Slide (5)	HCL011
Block	HCL012

Breast Analyte Control (ER, PR and HER2)

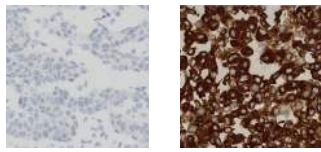
The multi-purpose Breast Analyte Control contains two cell lines that demonstrate positive and negative expression of ER, PR and HER2. Ideal for use as a same slide control in IHC to demonstrate the reagents have been correctly applied to the slide.



Format	Code
Slide (2)	HCL013
Slide (5)	HCL014
Block	HCL015

ROS1 Analyte Control

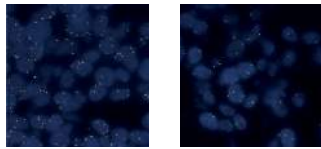
ROS1 Analyte Control contains two cell cores: one positive for ROS1 and the other negative.



IHC



2 core



FISH

Format

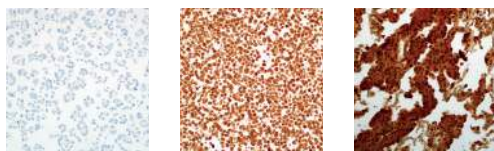
Slide (2)
Slide (5)
Block

Code

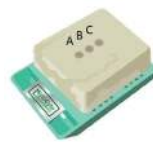
HCL022
HCL023
HCL024

HPV/p16 Analyte Control

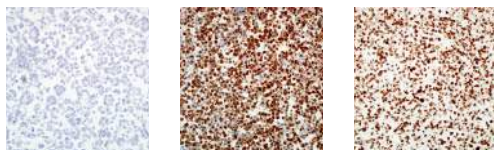
HPV/p16 Analyte Control contains three cell lines that demonstrate high, medium and negative expression of high risk human papillomavirus types 16 and 18. The same cell lines also demonstrate high homogenous, high heterogenous and negative expression of p16. Ideal for use as a same slide control for HPV in situ hybridization and p16 IHC to demonstrate assay sensitivity.



P16 IHC



3 core



RNA scope
E6 / E7

Format

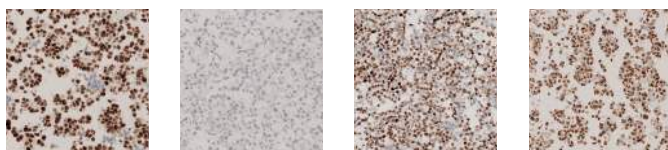
Slide (2)
Slide (5)
Block

Code

HCL004
HCL005
HCL006

MMR Analyte control

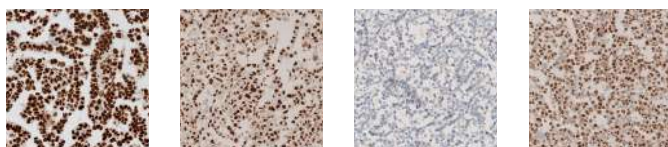
Our MMR Analyte Control consists of four different cell lines with loss of and intact expression for MLH1, PMS2, MSH2 and MSH6.



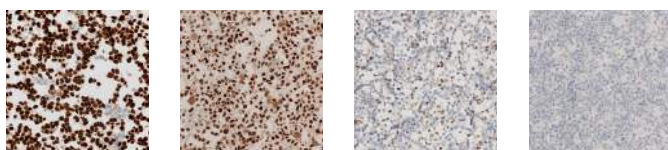
MLH1



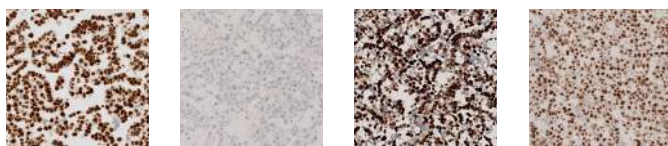
4 core



MSH2



MSH6



PMS2

Format

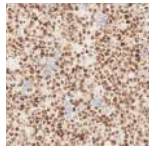
Slide (2)
Slide (5)
Block

Code

HCL041
HCL042
HCL043

MLH1/PMS2 Analyte Control

Our MLH1/PMS2 Analyte Control contains 2 cell lines, one with intact expression for MLH1 and PMS2 and one with loss of expression for MLH1 and PMS2.

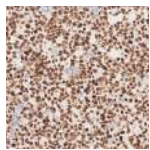


2 core

Format	Code
Slide (2)	HCL044
Slide (5)	HCL045
Block	HCL046

MSH2 Analyte Control

Our MSH2 Analyte Control contains 2 cell lines, one with intact expression for MSH2 and one with loss of expression for MSH2

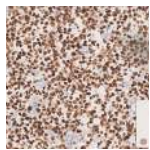


2 core

Format	Code
Slide (2)	HCL047
Slide (5)	HCL048
Block	HCL049

MSH6 Analyte Control

Our MSH6 Analyte Control contains 2 cell lines, one with intact expression for MSH6 and one with loss of expression for MSH6

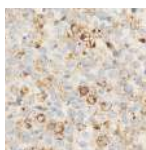
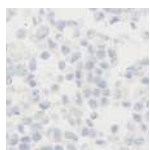


2 core

Format	Code
Slide (2)	HCL050
Slide (5)	HCL051
Block	HCL052

NTRK Analyte Control

Our NTRK Analyte Control contains two cell lines that demonstrate positive and negative expression of NTRK. Ideal for use as a same slide control in immunohistochemistry (IHC) to demonstrate the reagents have been correctly applied to the slide.

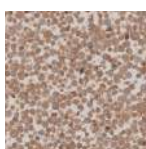


2 core

Format	Code
Slide (2)	HCL038
Slide (5)	HCL039
Block	HCL040

BRAF Analyte Control

B-Raf proto-oncogene is a gene encoding the BRAF protein belonging to the RAF family of serine/threonine protein kinases. This protein regulates the MAP kinase/ERK signalling pathway, which influences cell division, migration and differentiation. BRAF V600E mutations have been found in several types of cancers such as melanoma, papillary thyroid carcinoma and colorectal adenocarcinoma with a frequency of approximately 60%, 40% and 12% respectively. Additionally, studies have shown that the prevalence of BRAF mutation in lung carcinoma is approximately 2-4%.



2 core

Format	Code
Slide (2)	HCL056
Slide (5)	HCL057
Block	HCL058

Also Available From HistoCyte Laboratories Ltd

PRODUCT NAME	FORMAT	CODE
HPV/p16 Analyte Control^{DR} (Four cores: negative and three positive with dynamic range of HPV gene copies)	Slide(2)	HCL001
	Slide(5)	HCL002
	Block	HCL003
HPV/p16 Analyte Control (Three cores: negative and two positive for p16 and HPV gene copies)	Slide(2)	HCL004
	Slide(5)	HCL005
	Block	HCL006
ALK-Lung Analyte Control (Two cores: negative and a positive for the EML4-ALK translocation)	Slide(2)	HCL007
	Slide(5)	HCL008
	Block	HCL009
ALK-Lymphoma Analyte Control (Two cores: negative and a positive for the NPM-ALK translocation)	Slide(2)	HCL010
	Slide(5)	HCL011
	Block	HCL012
ALK Analyte Control^{DR} (Four cores: negative, positive for WT ALK, positive for EML4-ALK and positive for NPM-ALK)	Slide(2)	HCL053
	Slide(5)	HCL054
	Block	HCL055
Breast Analyte Control (Two cores: negative and positive for HER2, ER and PR)	Slide(2)	HCL013
	Slide(5)	HCL014
	Block	HCL015
Breast Analyte Control^{DR} (Five cores: variable levels of expression of HER2, ER and PR.)	Slide(2)	HCL016
	Slide(5)	HCL017
	Block	HCL018
PD-L1 Analyte Control^{DR} (Four cores: negative, low, intermediate and high levels of expression of PD-L1)	Slide(2)	HCL019
	Slide(5)	HCL020
	Block	HCL021
ROS1 Analyte Control (Two cores: negative and positive for ROS1 translocation SLC34A2- ROS1)	Slide(2)	HCL022
	Slide(5)	HCL023
	Block	HCL024
ROS1 Analyte Control^{DR} (Three cores: negative, FIG-ROS1 (very low fusion protein), SLC34A2-ROS1 (high fusion protein))	Slide(2)	HCL035
	Slide(5)	HCL036
	Block	HCL037
HER2 Analyte Control^{DR} (Four cores: 0, 1+ (both non-amplified), 2+ (equivocal) and 3+ (amplified))	Slide(2)	HCL026
	Slide(5)	HCL027
	Block	HCL028
Estrogen Receptor Analyte Control^{DR} (Four cores: negative, low, intermediate and high)	Slide(2)	HCL029
	Slide(5)	HCL030
	Block	HCL031
Progesterone Receptor Analyte Control^{DR} (Four cores: negative, low, intermediate and high)	Slide(2)	HCL032
	Slide(5)	HCL033
	Block	HCL034
NTRK Analyte Control (Two cores: negative and positive for WT TrkA protein)	Slide(2)	HCL038
	Slide(5)	HCL039
	Block	HCL040
Mismatch Repair Analyte Control^{DR} (Four cores, intact expression for MLH1/PMS/MSH2/MSH6, loss of expression for MLH1/PMS2, loss of expression for MSH2, loss of expression for MSH2/MSH6)	Slide(2)	HCL041
	Slide(5)	HCL042
	Block	HCL043
MLH1/PMS2 Analyte Control (Two cores, one with MLH1 deletion and loss of expression of MLH1 and PMS2, one with intact expression for MLH1 and PMS2)	Slide(2)	HCL044
	Slide(5)	HCL045
	Block	HCL046
MSH2 Analyte Control (Two cores, one with loss of MSH2 expression, one with intact expression of MSH2)	Slide(2)	HCL047
	Slide(5)	HCL048
	Block	HCL049
MSH6 Analyte Control (Two cores, one with loss of MSH6 expression, one with intact expression of MSH6)	Slide(2)	HCL050
	Slide(5)	HCL051
	Block	HCL052
BRAF Analyte Control (Two cores: negative and positive for BRAF V600E)	Slide(2)	HCL056
	Slide(5)	HCL057
	Block	HCL058



Quality in Control

For more information email: info@histocyte.com

For orders email: sales@histocyte.com

Telephone: +44 (0) 191 603 1007



For your local distributor please visit

www.HistoCyte.com

Distributed by Abacus dx

1800 ABACUS (AUS) 0800 222 170 (NZ) | info@abacusdx.com | www.abacusdx.com

abacus dx